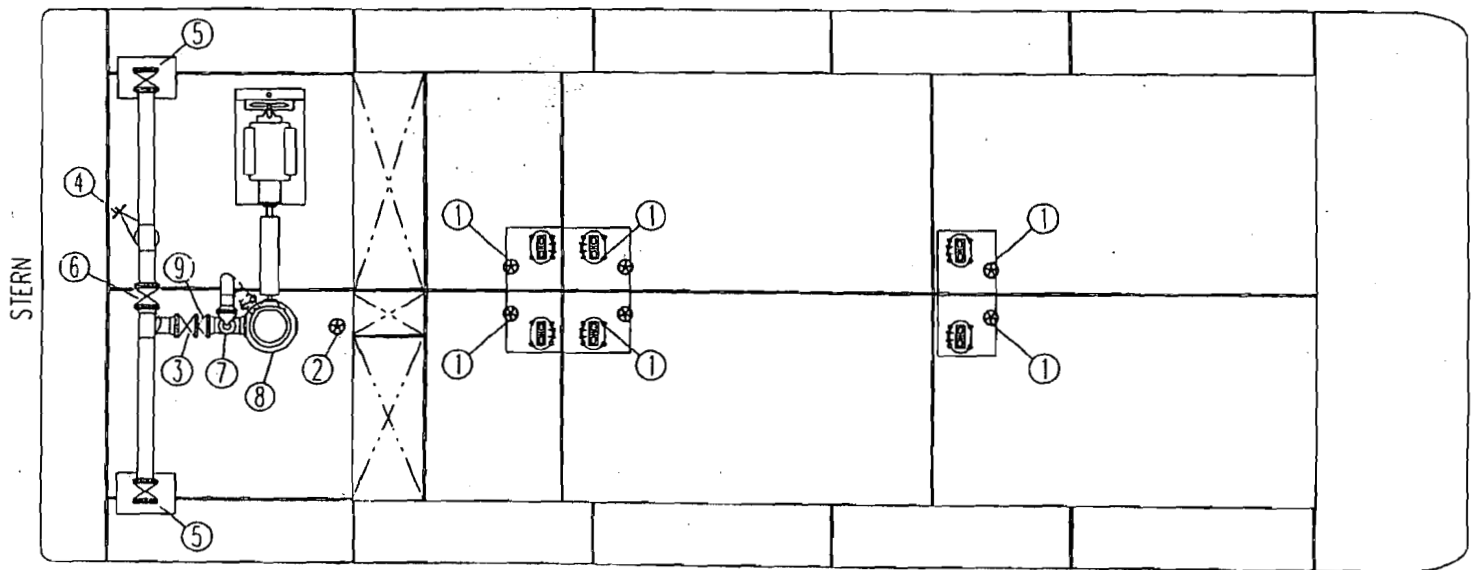


CONOCO INC. DOMESTIC MARINE OPERATIONS TRANSFER PROCEDURES

Title: Transfer Procedures	Revision Number: 02	Date Effective: 03/09/01	Number: TP-01
	Prepared By: Pat Packwood	Approved By: R. D. Quebodeaux	Page 8 of 18

BARGE No. 7025

CARGO PIPING SCHEMATIC



DECK PLAN

ITEM

1. COMPARTMENT VALVE HANDWHEEL
2. PUMP SUCTION VALVE HANDWHEEL
3. PUMP DISCHARGE VALVE
4. LOADING VALVE
5. HEADER VALVE
6. BLOCK VALVE
7. RELIEF VALVE
8. CARGO PUMP
9. CHECK VALVE

FIGURE # 1

CONOCO MARINE

240'-0" x 42'-0" x 12'-0"
DOUBLE SKIN TANK BARGE