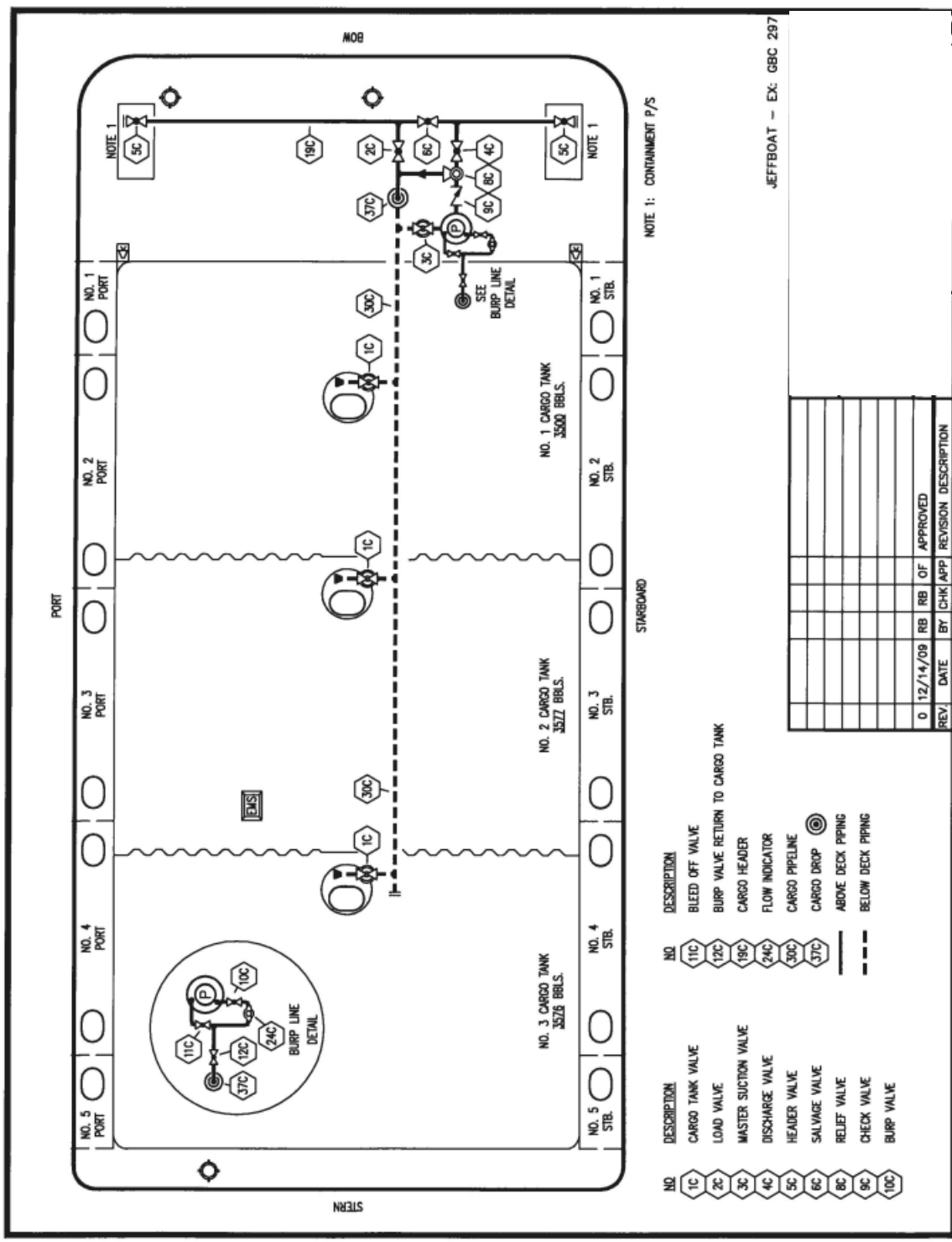


# CBC 17 ex: GBL 1010

## CARGO PIPING DIAGRAM



NOTE 1: CONTAINMENT P/S

JEFFBOAT - EX: GBC 297

NO	DESCRIPTION
1C	CARGO TANK VALVE
2C	LOAD VALVE
3C	MASTER SUCTION VALVE
4C	DISCHARGE VALVE
5C	HEADER VALVE
6C	SALVAGE VALVE
8C	RELIEF VALVE
9C	CHECK VALVE
10C	BURP VALVE
11C	BLEED OFF VALVE
12C	BURP VALVE RETURN TO CARGO TANK
19C	CARGO HEADER
24C	FLOW INDICATOR
30C	CARGO PIPELINE
37C	CARGO DROP
---	ABOVE DECK PIPING
---	BELOW DECK PIPING

REV.	DATE	BY	CHK APP	REVISION	DESCRIPTION
0	12/14/09	RB	OF	APPROVED	



