

CARGO SYSTEM VALVES

- 1 PUMP SUCTION VALVE
- 2 PUMP DISCHARGE VALVE
- 3 PUMP DISCHARGE CHECK VALVE
- 4 PRESSURE RELIEF VALVE
- 5 CARGO FILL VALVE
- 6 PORT & STBD HEADER VALVES
- 7 TK 1 FILL / SUCTION VALVE
- 8 TK 2 FILL / SUCTION VALVE
- 9 TK 3 FILL / SUCTION VALVE
- 10 TK 1 FILL / SUCTION VALVE
- 11 TK 2 FILL / SUCTION VALVE
- 12 TK 3 FILL / SUCTION VALVE
- 17 #1 STRIPPING VALVE
- 18 #2 STRIPPING VALVE
- 19 #3 STRIPPING VALVE
- PU PUMP
- BP BYPASS VALVE
- PB PUMP BLEED VALVE
- PD PUMP DRAIN
- PC PUMP CAN STRIPPING VALVE

CARGO LOADING:

- A OPEN VALVES NO.: 5, 6, 7, 8, 9, 10, 11 & 12
- B CLOSE VALVES NO.: 1, 2
- C VENT TANKS
- BP CLOSED
- PD CLOSED –NEVER OPEN
- PC CLOSED –NEVER OPEN

CARGO DISCHARGE:

- A OPEN VALVES NO.: 1, 2, 6, 7, 8, 9, 10, 11 & 12
- B CLOSE VALVES NO.: 5
- C VENT TANKS
- BP CLOSED
- PD CLOSED –NEVER OPEN
- PC CLOSED –NEVER OPEN

CAPACITIES-SHORT TONS AT VARIOUS DRAFTS				
DRAFT (FT)	TANK NUMBER			
	TOTAL (S.T.)	1 (S.T.)	2 (S.T.)	3 (S.T.)
6.0	822	274	274	274
6.25	875	291	292	292
6.5	929	309	310	310
6.75	981	327	327	327
7.0	1035	345	345	345
7.25	1088	362	363	363
7.5	1141	380	380	381
7.75	1195	398	398	399
8.0	1248	416	416	416
8.25	1302	434	434	434
8.5	1356	452	452	452
8.75	1409	469	470	470
9.0	1463	487	488	488
9.25	1517	505	506	506
9.50	1571	523	524	524
LIGHT WGT SHORT TON 407	MAX CAPACITY – BBL (100%)			
	10951	3795	3578	3578

SPECIAL FEATURES:

1. CARGO PUMP: 2100 GPM – 237 TDH 1800 RPM 10" SUCTION 8" DISCHARGE
2. CARGO PUMP ENGINE: CUMMINS 6CTA
3. COMMON VENT HEADER W/ RETURN LINE
4. CHANNEL STEAM COILS BELOW TANK

BUILDER: JEFFBOAT

CANAL BARGE COMPANY, INC.



200'-0" X 35'-0" X 12'-6" DOUBLE SKIN TANK BARGE
CARGO PIPING DIAGRAM

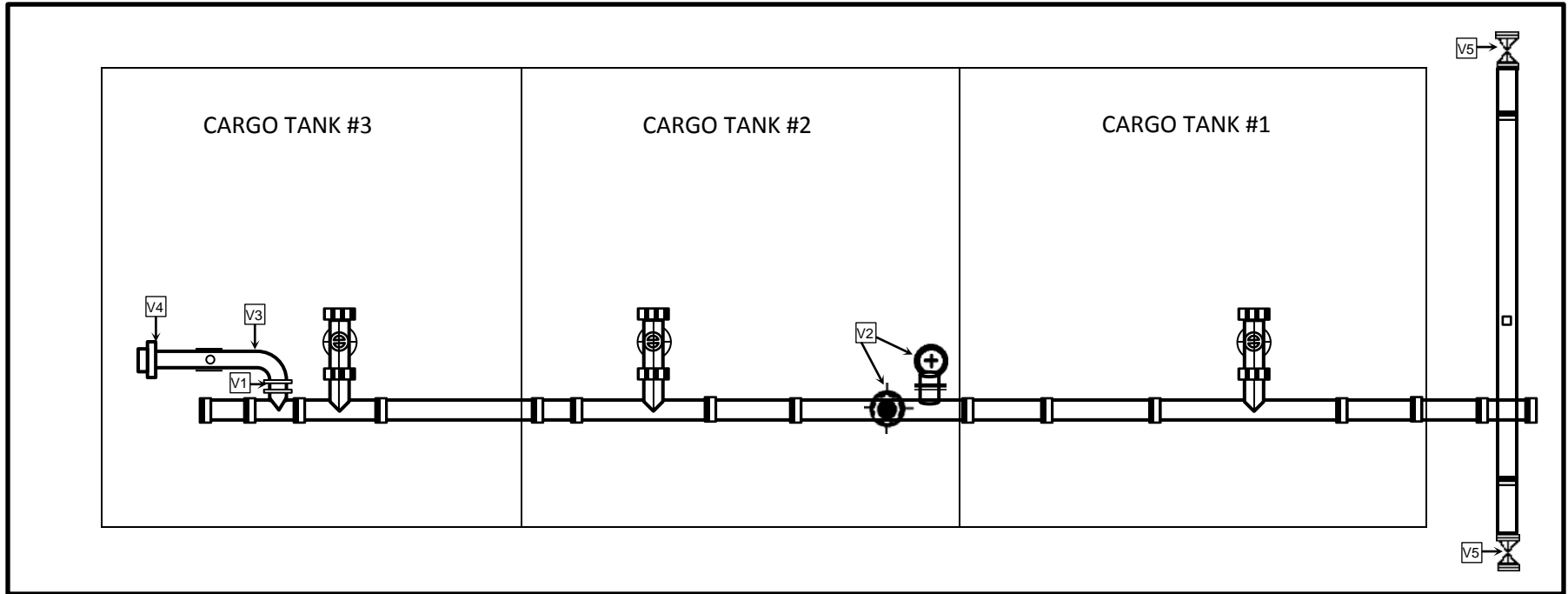
SCALE: DATE: 8/6/12

BARGE INFORMATION

HULL	04-2219	04-2220	04-2222	04-2223	04-2224	04-2226	04-2227
NAME:	CBC 40	CBC 41	CBC 43	CBC 44	CBC 45	CBC 47	CBC 48
OFF.#	1165012	1165013	1165015	1165016	1165018	1165020	1165022
YR BUILT	2005	2005	2005	2005	2005	2005	2005

STERN

BOW



VAPOR SYSTEM

- V1 VAPOR STACK VALVE
- V2 PRESS/VACCUUM VALVE
- V3 VENT STACK
- V4 RAIN CAP
- V5 VAPOR HEADER VALVE

BARGE INFORMATION

HULL	04-2213	04-2214	04-2215	04-2216	04-2217	04-2218	04-2219	04-2220
NAME:	CBC 34	CBC 35	CBC 36	CBC 37	CBC 38	CBC 39	CBC 40	CBC 41
OFF.#	1165006	1165007	1165008	1165009	1165010	1165011	1165012	1165013
YR BUILT	2005	2005	2005	2005	2005	2005	2005	2005
HULL	04-2221	04-2222	04-2223	04-2224	04-2225	04-2226	04-2227	04-2228
NAME:	CBC 42	CBC 43	CBC 44	CBC 45	CBC 46	CBC 47	CBC 48	CBC 49
OFF.#	1165014	1165015	1165016	1165018	1165019	1165020	1165022	1165023
YR BUILT	2005	2005	2005	2005	2005	2005	2005	2005

CBC 34-49 vapor piping(FINAL).docx

BUILDER: JEFFBOAT

CANAL BARGE COMPANY, INC.



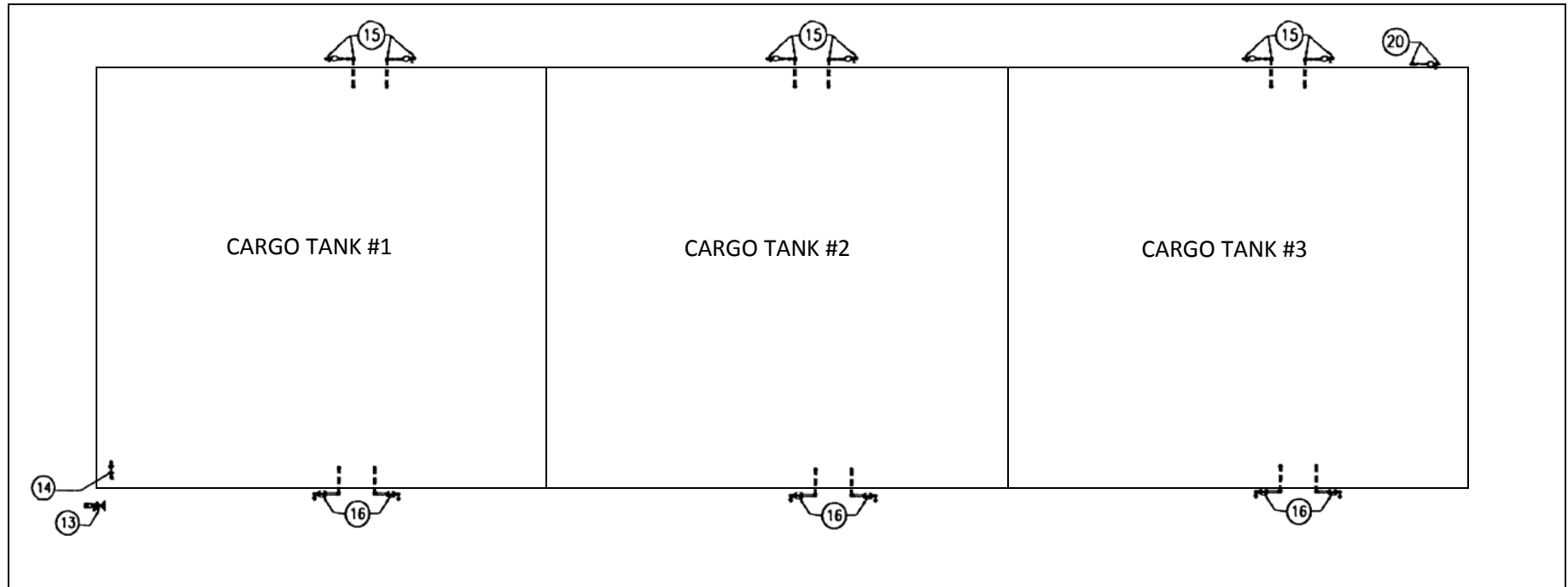
200'-0" X 35'-0" X 12'-6" DOUBLE SKIN TANK BARGE

VAPOR PIPING DIAGRAM

SCALE:	DATE: 12/21/11	DWG NO.
YARD: ASHLAND CITY	TAG NO. 96050	P-1
HULL NO. 04-2213 – 04-2228	SHOP ORDER:	SHT 1 OF 1 REV. 2

BOW

STERN



STEAM SYSTEM VALVES

- 13 STEAM SUPPLY SHORE CONNECTION
- 14 STEAM SUPPLY TO PUMPWELL
- 15 STEAM CONDENSATE RETURN VALVE
- 16 STEAM SUPPLY VALVE
- 20 STEAM CONDENSATE RETURN FROM PUMPWELL

BARGE INFORMATION

HULL	04-2213	04-2214	04-2215	04-2216	04-2217	04-2218	04-2219	04-2220
NAME:	CBC 34	CBC 35	CBC 36	CBC 37	CBC 38	CBC 39	CBC 40	CBC 41
OFF.#	1165006	1165007	1165008	1165009	1165010	1165011	1165012	1165013
YR BUILT	2005	2005	2005	2005	2005	2005	2005	2005
HULL	04-2221	04-2222	04-2223	04-2224	04-2225	04-2226	04-2227	04-2228
NAME:	CBC 42	CBC 43	CBC 44	CBC 45	CBC 46	CBC 47	CBC 48	CBC 49
OFF.#	1165014	1165015	1165016	1165018	1165019	1165020	1165022	1165023
YR BUILT	2005	2005	2005	2005	2005	2005	2005	2005

BUILDER: JEFFBOAT

CANAL BARGE COMPANY, INC.



200'-0" X 35'-0" X 12'-6" DOUBLE SKIN TANK BARGE

STEAM PIPING DIAGRAM

SCALE:	DATE: 12/21/11	DWG NO.
YARD: ASHLAND CITY	TAG NO. 96050	P-1
HULL NO. 04-2213 – 04-2228	SHOP ORDER:	SHT 1 OF 1 REV. 2