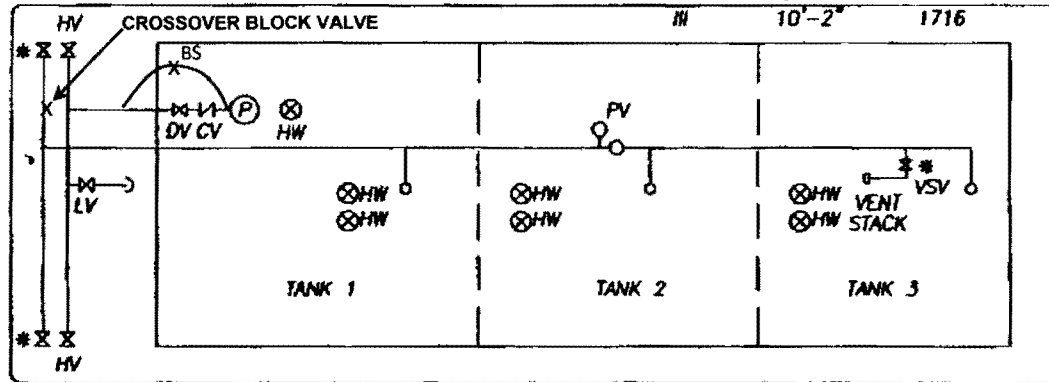
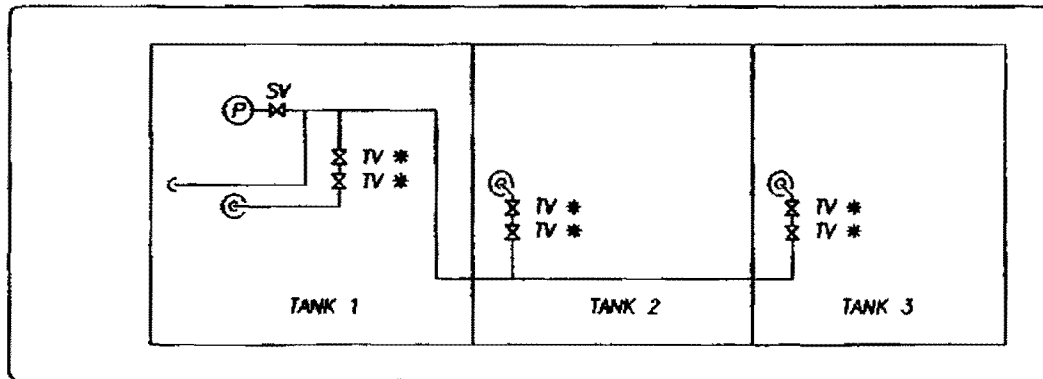


* NORMALLY CLOSED



ABOVE DECK PIPING



BELOW DECK PIPING

LOADING CONSTRAINTS		
TYPE	DRAFT	CARGO TONS
I	8'-9"	1410
II	9'-3"	1517
III	10'-2"	1716

CAPACITY -- SHORT TONS AT VARIOUS DRAFTS

DRAFT	TOTAL	TANK NUMBER		
		1	2	3
6'-0"	823	274	274	275
6'-3"	876	282	282	292
6'-6"	929	309	310	310
6'-9"	982	327	327	328
7'-0"	1035	345	345	345
7'-3"	1088	362	363	363
7'-6"	1142	380	381	381
7'-9"	1195	398	398	399
8'-0"	1249	416	416	417
8'-3"	1302	434	434	434
8'-6"	1356	452	452	452
8'-9"	1410	470	470	470
9'-0"	1463	487	488	488
9'-3"	1517	505	508	508
9'-6"	1571	523	524	524
LDGR NET SHGT INCH	MAXIMUM TANK CAPACITY -- BBLS			
407	10755	3598	3578	3578

BARGE INFORMATION

OFF NO	1165006	YEAR BUILT	2005
HULL TYPE	I, II, III	BUILT	JEFFERSONVILLE
GROSS/NET TONS	735	CARGO GRADE	A
SUBCHAPTER "D" CARGOES			
PUMP ENGINE - CUMMINS 6CTA			
CARGO PUMP			
2100 GPM - 237 TDW @ 1800 RPM			
10" SUCTION 8" DISCHARGE			
SPECIAL FEATURES			
1) COMMON VENT HEADER W/ RETURN LINE			
2) CHANNEL STEAM COILS BELOW TANK			
VALVE IDENTIFICATION			
HW - HEADER VALVE	DV - DISCHARGE VALVE	CV - CHECK VALVE	P - PUMP BS - BYPASS VALVE
LV - LEADING VALVE	HW - HEAD VALVE	PV - PRESSURE VALVE	SV - Suction Valve
TV - TRANSFER VALVE			

CANAL BARGE COMPANY, INC.
835 UNION STREET
NEW ORLEANS, LA 70112

PIPING DIAGRAM

TYPE:	DOUBLE SKIN	CBC 34-73
SIZE:	200 X 35 X 12.5	

TO LOAD	TO UNLOAD
OPEN #3TV, #2TV, #1TV	OPEN #3TV, #2TV, #1TV
OPEN LV	OPEN SV, DV
OPEN HV TO DOCK	OPEN HV TO DOCK
CLOSE SV, DV	CLOSE LV
CLOSE 2" BYPASS	

CBC 34	CBC 46	CBC 56	CBC 66
CBC 35	CBC 47	CBC 57	CBC 67
CBC 36	CBC 48	CBC 58	CBC 68
CBC 37	CBC 49	CBC 59	CBC 69
CBC 38	CBC 50	CBC 60	CBC 70
CBC 39	CBC 51	CBC 61	CBC 72
CBC 40	CBC 52	CBC 62	CBC 73
CBC 42	CBC 53	CBC 63	
CBC 43	CBC 54	CBC 64	
CBC 45	CBC 55	CBC 65	