

CARGO SYSTEM VALVES

- 1 PUMP SUCTION VALVE
- 2 PUMP DISCHARGE VALVE
- 3 PUMP DISCHARGE CHECK VALVE
- 4 PRESSURE RELIEF VALVE
- 5 CARGO FILL VALVE
- 6 PORT & STBD HEADER VALVES
- 7 TK 1 FILL / SUCTION VALVE
- 8 TK 2 FILL / SUCTION VALVE
- 9 TK 3 FILL / SUCTION VALVE
- 10 TK 1 FILL / SUCTION VALVE
- 11 TK 2 FILL / SUCTION VALVE
- 12 TK 3 FILL / SUCTION VALVE
- 17 #1 STRIPPING VALVE
- 18 #2 STRIPPING VALVE
- 19 #3 STRIPPING VALVE
- PU PUMP
- BP BYPASS VALVE
- PB PUMP BLEED VALVE

CARGO LOADING:

- A OPEN VALVES NO.: 5, 6, 7, 8, 9, 10, 11 & 12
- B CLOSE VALVES NO.: 1, 2
- C VENT TANKS
- BP CLOSED

CARGO DISCHARGE:

- A OPEN VALVES NO.: 1, 2, 6, 7, 8, 9, 10, 11 & 12
- B CLOSE VALVES NO.: 5
- C VENT TANKS
- BP CLOSED

DRAFT (FT)	CAPACITIES-SHORT TONS AT VARIOUS DRAFTS			
	TOTAL (S.T.)	1 (S.T.)	2 (S.T.)	3 (S.T.)
6.0	823	274	274	275
6.25	876	292	292	292
6.5	929	309	310	310
6.75	982	327	327	328
7.0	1035	345	345	345
7.25	1088	362	363	363
7.5	1142	380	381	381
7.75	1195	398	398	399
8.0	1249	416	416	417
8.25	1302	434	434	434
8.5	1356	452	452	452
8.75	1410	470	470	470
9.0	1463	487	488	488
9.25	1517	505	506	506
9.50	1571	523	524	524
LIGHT WGT SHORT TON 407	MAX CAPACITY - BBL (100%)			
	10755	3599	3578	3578

SPECIAL FEATURES:

- 1. CARGO PUMP: 2100 GPM – 237 TDH 1800 RPM 10" SUCTION 8" DISCHARGE
- 2. CARGO PUMP ENGINE: DETROIT DIESEL 6-71
- 3. COMMON VENT HEADER W/ RETURN LINE
- 4. CHANNEL STEAM COILS BELOW TANK

CBC 90-99 CARGO PIPING (FINAL).docx

BARGE INFORMATION

HULL	03-2972	03-2973	03-2974	03-2975	03-2976	03-2977	03-2990	03-2991	03-2992	03-2993
NAME:	CBC 90	CBC 91	CBC 92	CBC 93	CBC 94	CBC 95	CBC 96	CBC 97	CBC 98	CBC 99
OFF.#	1141494	1141495	1141496	1141497	1141498	1141499	1141500	1141501	1141502	1141504
YEAR BUILT	2001	2001	2001	2001	2001	2001	2001	2001	2001	2001

BUILDER: JEFFBOAT

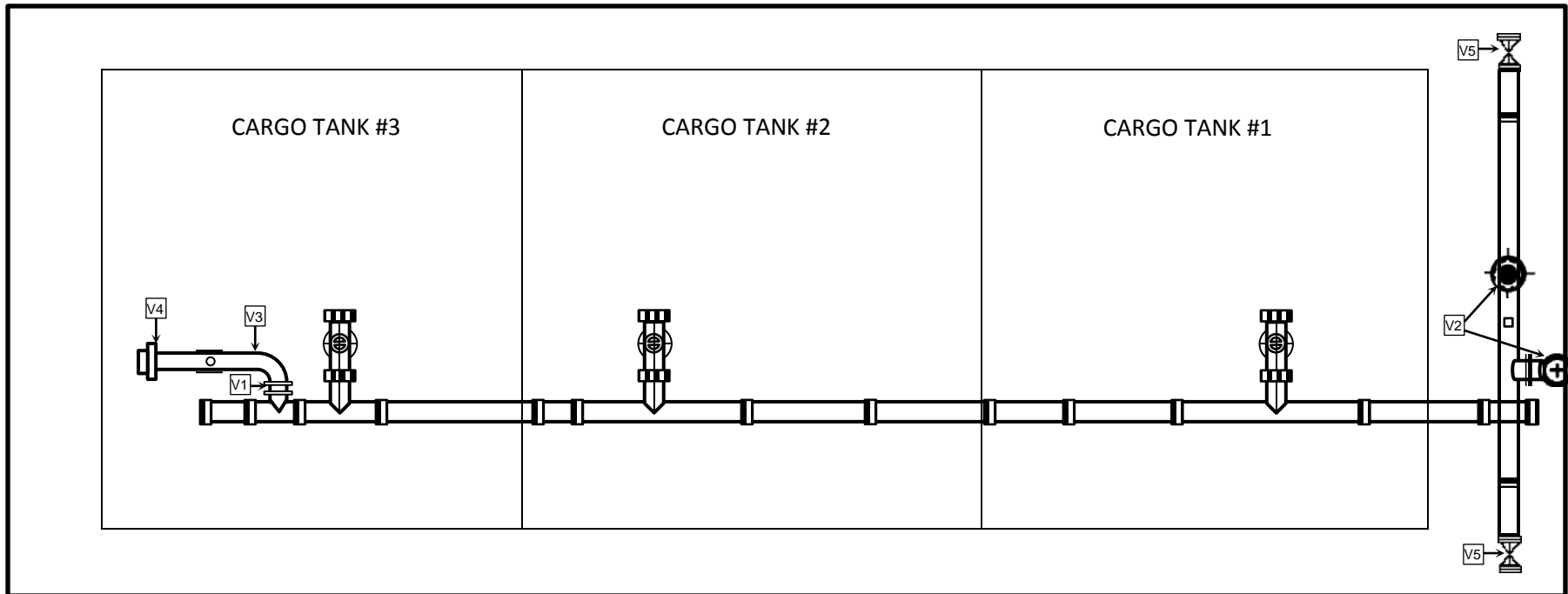
CANAL BARGE COMPANY, INC.

200'-0" X 35'-0" X 12'-6" DOUBLE SKIN TANK BARGE
CARGO PIPING DIAGRAM

SCALE:	DATE: 12/21/11	DWG NO.
YARD: ASHLAND CITY	TAG NO. 96050	P-1
HULL NO. 03-2972 – 03-2993	SHOP ORDER:	SHT 1 OF 1 REV. 2

STERN

BOW



VAPOR SYSTEM

- V1 VAPOR STACK VALVE
- V2 PRESS/VACCUM VALVE
- V3 VENT STACK
- V4 RAIN CAP
- V5 VAPOR HEADER VALVE

BARGE INFORMATION

HULL	03-2972	03-2973	03-2974	03-2975	03-2976	03-2977	03-2990	03-2991	03-2992	03-2993
NAME:	CBC 90	CBC 91	CBC 92	CBC 93	CBC 94	CBC 95	CBC 96	CBC 97	CBC 98	CBC 99
OFF.#	1141494	1141495	1141496	1141497	1141498	1141499	1141500	1141501	1141502	1141504
YEAR BUILT	2001	2001	2001	2001	2001	2001	2001	2001	2001	2001

CBC 90-99 vapor piping(FINAL).docx

BUILDER: JEFFBOAT

CANAL BARGE COMPANY, INC.



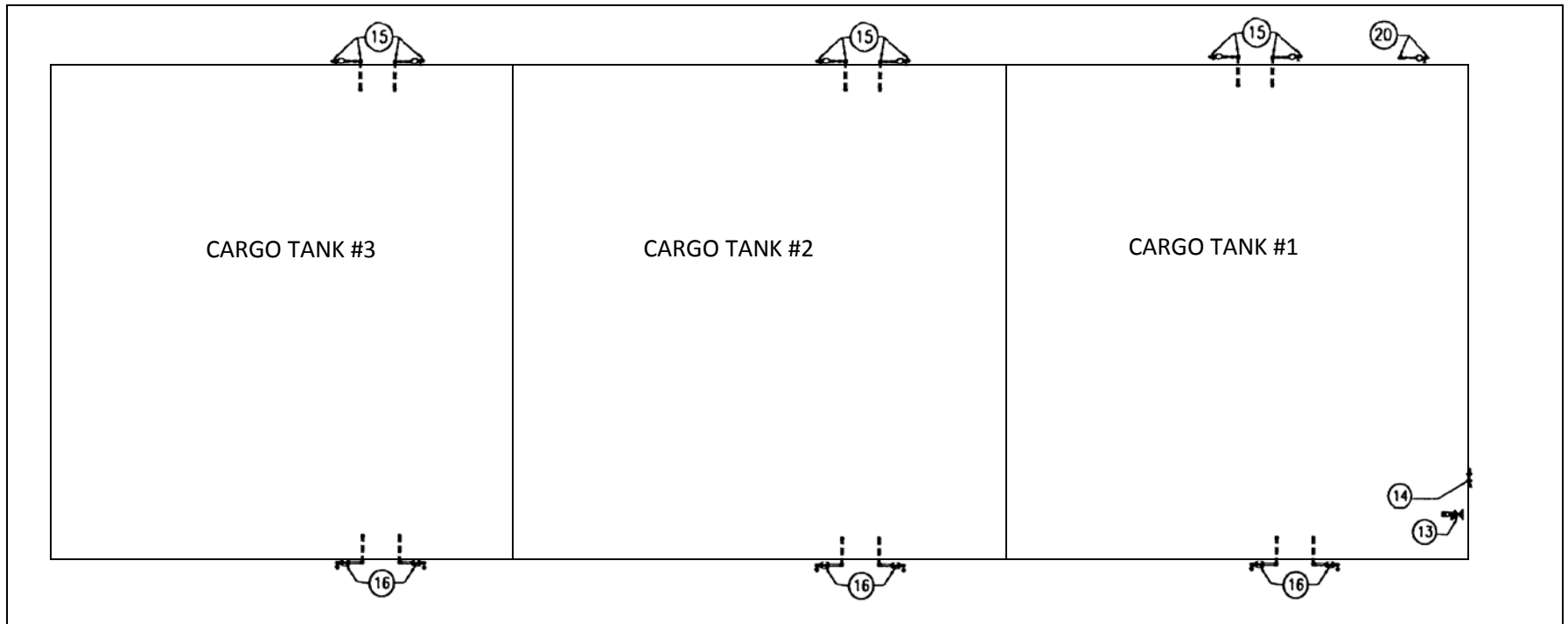
200'-0" X 35'-0" X 12'-0" DOUBLE SKIN TANK BARGE

VAPOR PIPING DIAGRAM

SCALE:	DATE: 12/21/11	DWG NO.
YARD: ASHLAND CITY	TAG NO. 96050	P-1
HULL NO. 03-2972 – 03-2993	SHOP ORDER:	SHT 1 OF 1 REV. 2

STERN

BOW



STEAM SYSTEM VALVES

- 13 STEAM SUPPLY SHORE CONNECTION
- 14 STEAM SUPPLY TO PUMPWELL
- 15 STEAM CONDENSATE RETURN VALVE
- 16 STEAM SUPPLY VALVE
- 20 STEAM CONDENSATE RETURN FROM PUMPWELL

BARGE INFORMATION

HULL	03-2972	03-2973	03-2974	03-2975	03-2976	03-2977	03-2990	03-2991	03-2992	03-2993
NAME:	CBC 90	CBC 91	CBC 92	CBC 93	CBC 94	CBC 95	CBC 96	CBC 97	CBC 98	CBC 99
OFF.#	1141494	1141495	1141496	1141497	1141498	1141499	1141500	1141501	1141502	1141504
YEAR BUILT	2001	2001	2001	2001	2001	2001	2001	2001	2001	2001

CBC 90-99. STEAM PIPING.docx

BUILDER: JEFFBOAT		
CANAL BARGE COMPANY, INC.		
200'-0" X 35'-0" X 12'-6" DOUBLE SKIN TANK BARGE		
<u>STEAM PIPING DIAGRAM</u>		
SCALE:	DATE: 12/21/11	DWG NO.
YARD: ASHLAND CITY	TAG NO. 96050	P-1
HULL NO. 03-2972 – 03-2993	SHOP ORDER:	SHT 1 OF 1 REV. 2