

CARGO SYSTEM VALVES

- 1 PUMP SUCTION VALVE
- 2 PUMP DISCHARGE VALVE
- 3 PUMP DISCHARGE CHECK VALVE
- 4 PRESSURE RELIEF VALVE
- 5 CARGO FILL VALVE
- 6 PORT & STBD HEADER VALVES
- 7 TK 1 FILL / SUCTION VALVE
- 8 TK 2 FILL / SUCTION VALVE
- 9 TK 3 FILL / SUCTION VALVE
- 10 TK 1 FILL / SUCTION VALVE
- 11 TK 2 FILL / SUCTION VALVE
- 12 TK 3 FILL / SUCTION VALVE
- 17 #1 STRIPPING VALVE
- 18 #2 STRIPPING VALVE
- 19 #3 STRIPPING VALVE
- PU PUMP
- BP BYPASS VALVE
- PB PUMP BLEED VALVE

TANK VOL. 100% FULL			
TANK	GAL.	BBL.	CU. FT.
1	161,896	3854.67	21642.40
2	154,329	3674.5	20630.84
3	152,850	3639.28	20433.126
TOTAL	469,075	11168.45	62706.366
		98% FULL	10945.081

CARGO LOADING:

- A OPEN VALVES NO.: 5, 6, 7, 8, 9, 10, 11 & 12
- B CLOSE VALVES NO.: 1, 2

- C VENT TANKS
- BP CLOSED

CARGO DISCHARGE:

- A OPEN VALVES NO.: 1, 2, 6, 7, 8, 9, 10, 11 & 12
- B CLOSE VALVES NO.: 5
- C VENT TANKS
- BP CLOSED

CAPACITIES-SHORT TONS AT VARIOUS DRAFTS				
DRAFT (FT)	TOTAL (S.T.)	TANK NUMBER		
		1 (S.T.)	2 (S.T.)	3 (S.T.)
2.50	92.90	23.60	22.40	46.90
3.00	194.50	60.20	57.50	76.80
3.50	296.40	97.40	93.40	105.60
4.00	399.00	135.30	129.80	133.90
4.50	501.90	173.70	166.80	161.40
5.00	605.50	212.80	204.50	188.20
5.50	709.30	252.10	242.30	214.90
6.00	813.50	291.90	280.80	240.80
6.50	918.10	332.30	319.80	266.00
7.00	1023.00	373.20	359.10	290.70
7.50	1128.40	414.60	399.20	314.60
8.00	1233.90	456.20	439.30	338.40
8.50	1339.90	497.30	479.00	363.60
9.00	1446.00	538.90	519.10	388.00
9.50	1552.30	580.70	559.40	412.20
10.00	1658.90	622.90	600.10	435.90
10.50	1765.80	668.70	644.50	452.60
11.00	1873.40	719.90	694.20	459.30
11.50	1981.50	765.40	738.30	477.80
12.00	2090.10	811.70	783.00	495.40
MAX CAPACITY – BBL (100%)				
	11931.47	4633.64	4469.80	2828.03
MAX CAPACITY – CU. FT. (100%)				
	66990.38	26016.03	25096.15	15878.20

SPECIAL FEATURES:

- 1. CARGO PUMP: BYRON JACKSON MODEL 11LS14GH-3 AMARILLO GEAR 1:1 RATIO 2100 GPM, 253' TDH @ 192 H.P.
- 2. CARGO PUMP ENGINE: DETROIT DIESEL MODEL 1063-7000

BUILDER: TRINITY MARINE PRODUCTS

CANAL BARGE COMPANY, INC.



200'-0" X 35'-0" X 12'-6" DOUBLE SKIN TANK BARGE
CARGO PIPING DIAGRAM

SCALE:	DATE: 6/12/12	DWG NO.
YARD: ASHLAND CITY	TAG NO.	P-1
HULL NO. 4380-4385, 4390-4393	SHOP ORDER:	SHT 1 OF 1
	REV.	

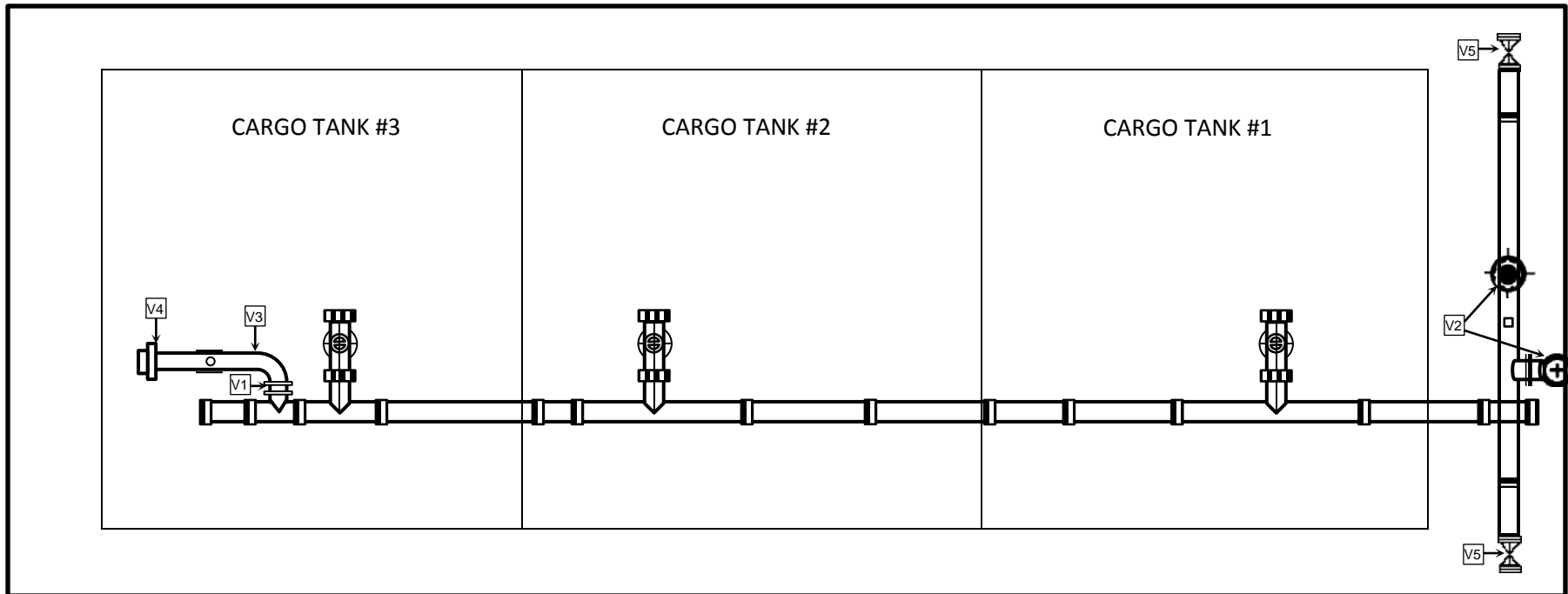
BARGE INFORMATION

HULL	4380	4381	4382	4383	4384	4385	4390	4391	4392	4393
NAME:	CBC 100	CBC 101	CBC 102	CBC 103	CBC 104	CBC 105	CBC 106	CBC 107	CBC 108	CBC 109
OFF.#	1110699	1110700	1110701	1110702	1110703	1110704	1110705	1110706	1110707	1110708
YR BUILT	2001	2001	2001	2001	2001	2001	2001	2001	2001	2001

HULL TYPE: III
CARGO GRADE: A & LOWER PRODUCTS PER SUBCHAPTER "D" AND LIMITED SUBCHAPTER "O" PRODUCTS.

STERN

BOW



VAPOR SYSTEM

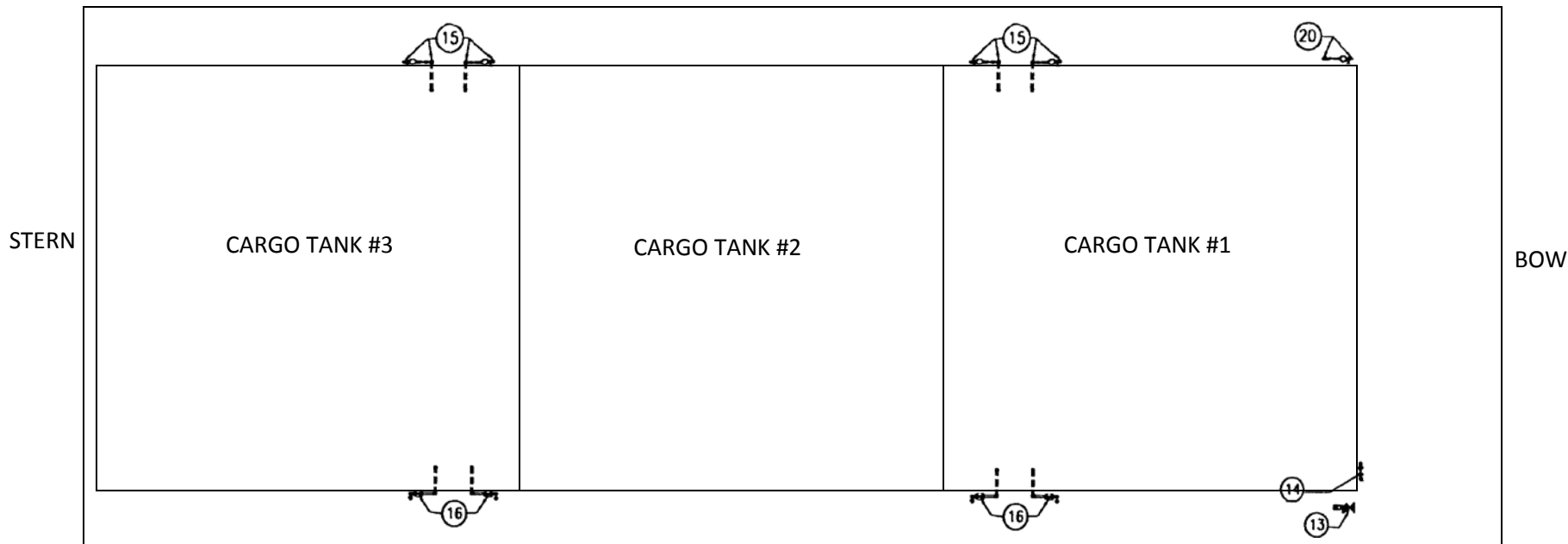
- V1 VAPOR STACK VALVE
- V2 PRESS/VACCUM VALVE
- V3 VENT STACK
- V4 RAIN CAP
- V5 VAPOR HEADER VALVE

BARGE INFORMATION

HULL	4380	4381	4382	4383	4384	4385	4390	4391	4392	4393
NAME:	CBC 100	CBC 101	CBC 102	CBC 103	CBC 104	CBC 105	CBC 106	CBC 107	CBC 108	CBC 109
OFF.#	1110699	1110700	1110701	1110702	1110703	1110704	1110705	1110706	1110707	1110708
YEAR BUILT	2001	2001	2001	2001	2001	2001	2001	2001	2001	2001

CBC 100-109 VAPOR PIPING.docx

BUILDER: TRINITY MARINE PRODUCTS		
CANAL BARGE COMPANY, INC.		
<u>200'-0" X 35'-0" X 12'-0" DOUBLE SKIN TANK BARGE</u>		
<u>VAPOR PIPING DIAGRAM</u>		
SCALE:	DATE: 6/12/12	DWG NO.
YARD: ASHLAND CITY	TAG NO.	P-1
HULL NO. 4380-4385, 4390-4393	SHOP ORDER:	SHT 1 OF 1 REV.



STEAM SYSTEM VALVES

- 13 STEAM SUPPLY SHORE CONNECTION
- 14 STEAM SUPPLY TO PUMPWELL
- 15 STEAM CONDENSATE RETURN VALVE
- 16 STEAM SUPPLY VALVE
- 20 STEAM CONDENSATE RETURN FROM PUMPWELL

BARGE INFORMATION

HULL	4380	4381	4382	4383	4384	4385	4390	4391	4392	4393
NAME:	CBC 100	CBC 101	CBC 102	CBC 103	CBC 104	CBC 105	CBC 106	CBC 107	CBC 108	CBC 109
OFF.#	1110699	1110700	1110701	1110702	1110703	1110704	1110705	1110706	1110707	1110708
YEAR BUILT	2001	2001	2001	2001	2001	2001	2001	2001	2001	2001

HULL TYPE: III

CARGO GRADE: A & LOWER PRODUCTS PER SUBCHAPTER "D" AND LIMITED SUBCHAPTER "O" PRODUCTS.

CBC 100-109 STEAM PIPING.docx

BUILDER: TRINITY MARINE PRODUCTS

CANAL BARGE COMPANY, INC.



200'-0" X 35'-0" X 12'-6" DOUBLE SKIN TANK BARGE

STEAM PIPING DIAGRAM

SCALE:	DATE: 6/12/12	DWG NO.
YARD: ASHLAND CITY	TAG NO.	P-1
HULL NO. 4380-4385 & 4390-4393	SHOP ORDER:	SHT 1 OF 1 REV.