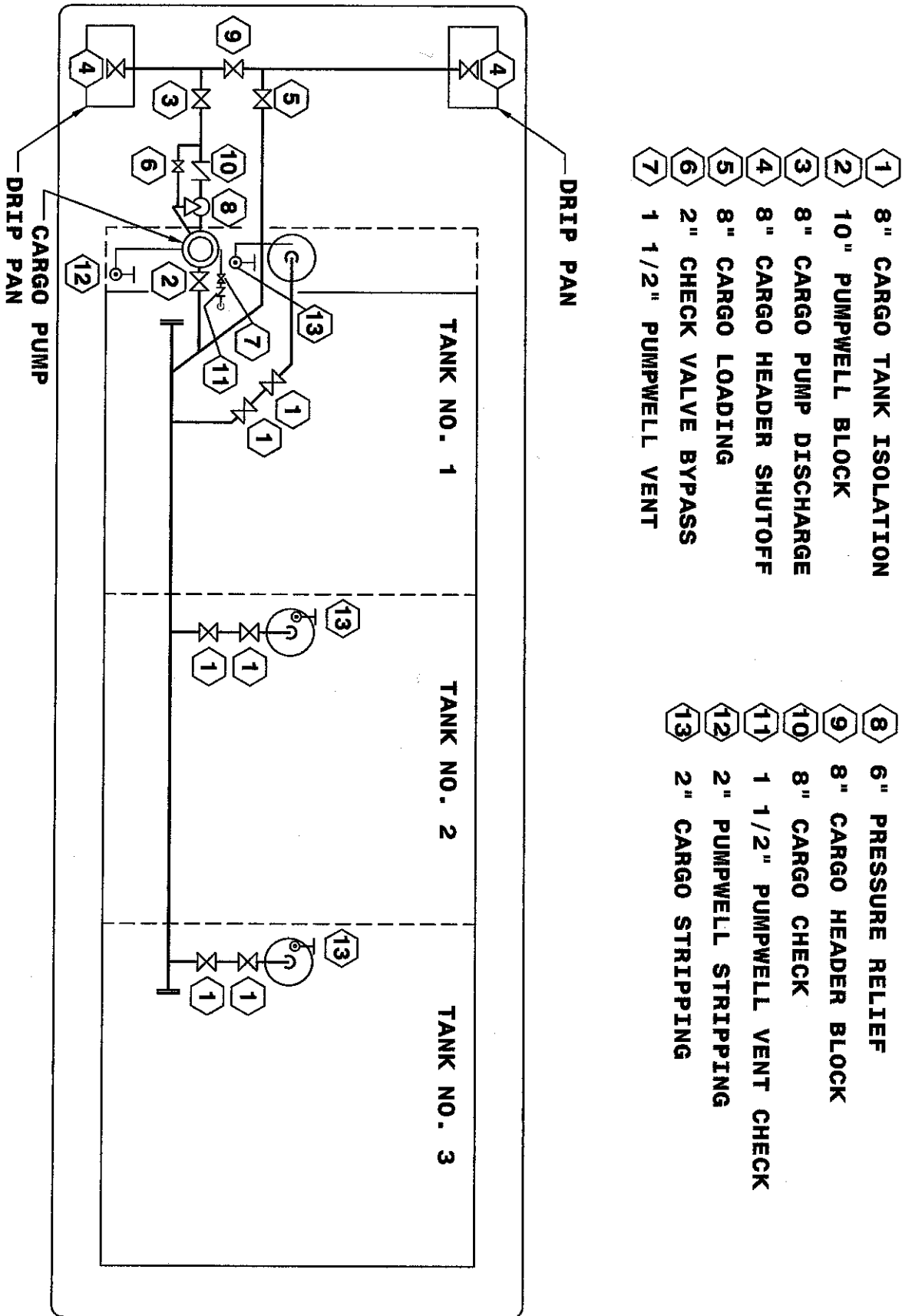


Cargo Piping Diagram
AEP Barges 10401-10430



CARGO AND STRIPPING

Cargo Chart 3/4/2015
 Jeffboat Job: 5912
 General Arrgt: B-22600
 Lightship (ST) 428.89

Table Valid For: AEP 10401 THRU AEP 10430

Jeffboat Hulls: 14-2912 THRU 14-2931
 14-2943 THRU 14-2952

Deadweight (Cargo Weight) shown based on barge in fresh water at even keel

Average Draft	ST Deadweight	Average Draft	ST Deadweight	Average Draft	ST Deadweight	Average Draft	ST Deadweight
1'-1"		4'-4"	450	7'-7"	1,138		
1'-2"		4'-5"	467	7'-8"	1,156		
1'-3"		4'-6"	485	7'-9"	1,174		
1'-4"		4'-7"	502	7'-10"	1,191		
1'-5"		4'-8"	520	7'-11"	1,209		
1'-6"		4'-9"	537	8'-0"	1,227		
1'-7"		4'-10"	555	8'-1"	1,245		
1'-8"		4'-11"	572	8'-2"	1,263		
1'-9"		5'-0"	590	8'-3"	1,281		
1'-10"		5'-1"	607	8'-4"	1,299		
1'-11"		5'-2"	625	8'-5"	1,317		
2'-0"		5'-3"	642	8'-6"	1,335		
2'-1"		5'-4"	660	8'-7"	1,353		
2'-2"	3	5'-5"	677	8'-8"	1,371		
2'-3"	20	5'-6"	695	8'-9"	1,389		
2'-4"	37	5'-7"	713	8'-10"	1,407		
2'-5"	54	5'-8"	730	8'-11"	1,424		
2'-6"	71	5'-9"	748	9'-0"	1,442		
2'-7"	88	5'-10"	765	9'-1"	1,460		
2'-8"	105	5'-11"	783	9'-2"	1,478		
2'-9"	122	6'-0"	801	9'-3"	1,496		
2'-10"	139	6'-1"	818	9'-4"	1,514		
2'-11"	156	6'-2"	836	9'-5"	1,533		
3'-0"	173	6'-3"	854	9'-6"	1,551		
3'-1"	191	6'-4"	871	9'-7"	1,569		
3'-2"	208	6'-5"	889	9'-8"	1,587		
3'-3"	225	6'-6"	907	9'-9"	1,605		
3'-4"	242	6'-7"	924	9'-10"	1,623		
3'-5"	259	6'-8"	942	9'-11"	1,641		
3'-6"	277	6'-9"	960	10'-0"	1,659		
3'-7"	294	6'-10"	978	10'-1"	1,677		
3'-8"	311	6'-11"	995	10'-2"	1,695	Cargo Volume	11,065
3'-9"	329	7'-0"	1,013				
3'-10"	346	7'-1"	1,031				
3'-11"	363	7'-2"	1,049			G. R. T.	735
4'-0"	381	7'-3"	1,067				
4'-1"	398	7'-4"	1,084				
4'-2"	415	7'-5"	1,102				
4'-3"	433	7'-6"	1,120				