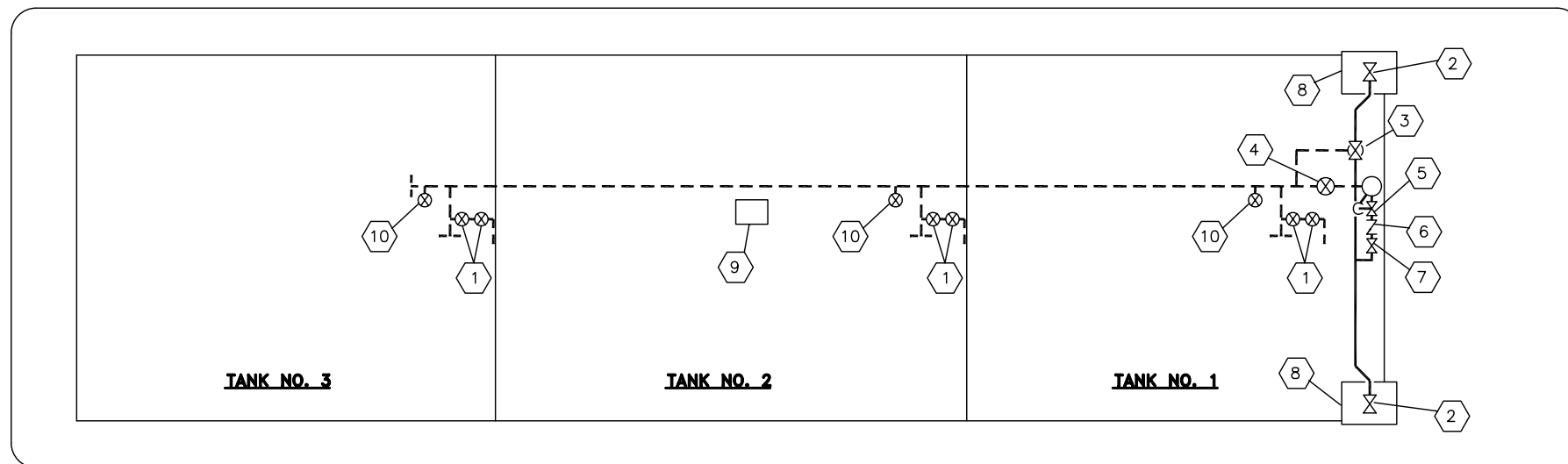


VAPOR PIPING



CARGO PIPING

BILL OF MATERIALS		
ITEM	QTY	DESCRIPTION
1	3	8" CARGO TANK VALVE
2	2	8" CARGO HEADER VALVE
3	1	8" LOADING VALVE
4	1	10" PUMP BLOCK VALVE
5	1	8" RELIEF VALVE
6	1	8" CHECK VALVE
7	1	8" DISCHARGE VALVE
8	2	DRIP PAN
9	1	REMOTE ENG. SHUTDOWN
10	3	8" CARGO HIGH SUCTION VALVE
11	1	PRESSURE VACUUM VALVE
12	1	VENT STACK
13	1	VENT STACK VALVE
14	2	VAPOR HEADER VALVE
15	-	-

CAPACITY - TONS AT VARIOUS DRAFTS	
DRAFT	CARGO TONS
6'-0"	848.71
6'-6"	954.44
7'-0"	1060.51
7'-6"	1166.93
8'-0"	1273.66
8'-6"	1380.70
9'-0"	1488.03
9'-6"	1595.63
10'-0"	1703.50
10'-6"	1811.63
11'-0"	1919.99
-	-
-	-
-	-

BARGE: CBC-1324
 OWNER: CANAL BARGE CO.

PROJECT: 200'-0" x 35'-0" x 12'-6" DOUBLE SKIN TANK BARGE

DRAWING TITLE: CARGO PIPING

BARGE INFORMATION	
OFF. NO. 1216082	YEAR BUILT- 2009
HULL TYPE I, II, III	BUILT - BELLE CHASSE, LA
GROSS/ NET TONS 735	CARGO GRADE A
SUBCHAPTER "O" & "D" CARGOES	PUMP ENGINE - CUMMINS 6CTA
CARGO PUMP - BYRON JACKSON DEEPWELL MODEL 11" LS 14GH	
SPECIAL FEATURES	
1) COMMON VENT HEADER W/ RETURN LINE	
2) CHANNEL STEAM COILS BELOW TANK3	

REV	DESCRIPTION	DATE
5		
4		
3	ADD CAPACITY TABLE	12/1/2008
2	ADD VAPOR PIPING DIAGRAM	11/5/2008
1	ADD BARGE INFORMATION TABLE	5/15/2008

C&C MARINE AND REPAIR

DRAWN BY: BN 3/18/08
 CHECKED: []
 APPROVED: []
 JOB NO. A-1182
 HULL NO. 120

SIZE: D	DRAWING NO: CP-01 (LINE)	REV: 0
SCALE: N.T.S.	DATE: 3/18/08	SHEET 1 OF 1