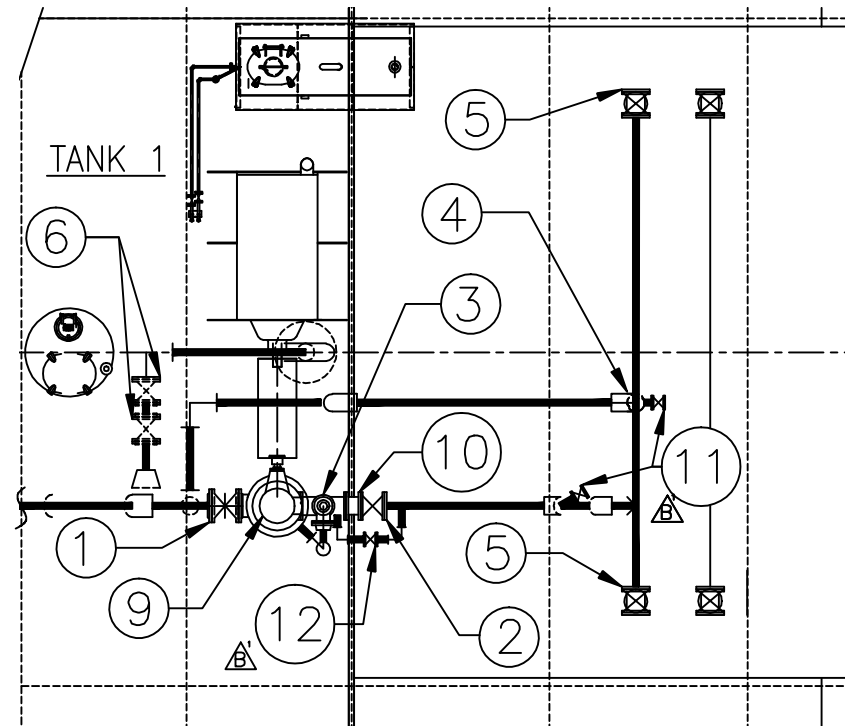
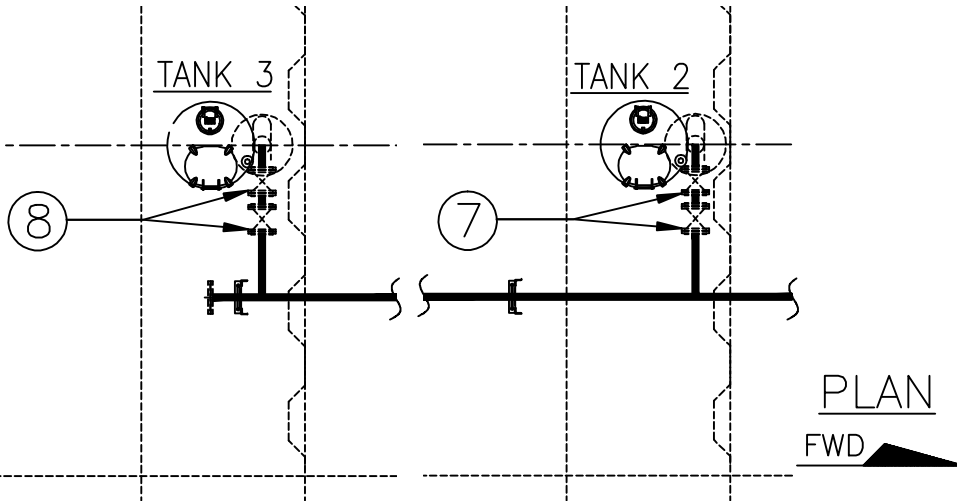


ABV & BLW DK



CAPACITY—SHORT TONS AT VARIOUS DRAFTS				
DRAFT	TOTAL	CT1	CT2	CT3
6'-0"	818.1	264.1	296.8	257.4
6'-3"	871.1	282.6	317.4	271.1
6'-6"	924.0	301.2	338.1	284.7
6'-9"	977.2	319.9	359.0	298.3
7'-0"	1030.2	338.7	379.9	311.7
7'-3"	1083.6	357.6	400.9	325.1
7'-6"	1136.9	376.5	421.9	338.5
7'-9"	1190.2	395.5	443.1	351.7
8'-0"	1243.7	414.6	464.3	364.9
8'-3"	1297.3	433.8	485.6	378.0
8'-6"	1350.9	453.0	506.9	391.0
8'-9"	1404.6	472.3	528.4	404.0
9'-0"	1458.4	491.6	549.9	416.9
9'-3"	1512.2	511.1	571.5	429.7
9'-6"	1566.1	530.6	593.1	442.5
9'-9"	1620.1	550.1	614.8	455.2
10'-0"	1674.1	569.7	636.6	467.9
10'-3"	1728.2	589.4	658.4	480.4
10'-6"	1782.4	609.1	680.3	493.0

CARGO SYSTEM VALVES

- 1 - 10" - MASTER SUCTION VALVE
- 2 - 8" - DISCHARGE VALVE
- 3 - 6"x4" - PRESSURE RELIEF VALVE
- 4 - 8" - LOAD VALVE
- 5 - 8" - PORT & STBD HEADER VALVES
- 6 - 8" - TK 1 FILL / SUCTION VALVE
- 7 - 8" - TK 2 FILL / SUCTION VALVE
- 8 - 8" - TK 3 FILL / SUCTION VALVE
- 9 - PUMP
- 10 - 8" - CHECK VALVE
- 11 - 2" - DRAIN VALVE
- 12 - 2" - BY PASS VALVE

MAX. CAPACITY—BBL (FULL)			
TOTAL	CT1	CT2	CT3
11186.30	3510.12	4064.02	3612.26

MAX. CAPACITY—CU FT (95%)			
TOTAL	CT1	CT2	CT3
59666.25	18721.98	21676.95	19267.32

NAME	HULL #
CBC 1335	9628
CBC 1336	9629
CBC 1337	9630
CBC 1338	9631

REV	NO	DESCRIPTION	DATE	BY
B	1	ADDED 2" VALVES	6/9/11	SSJ
A	1	ADDED CAPACITY CHARTS	6/9/11	SSJ

REVISIONS

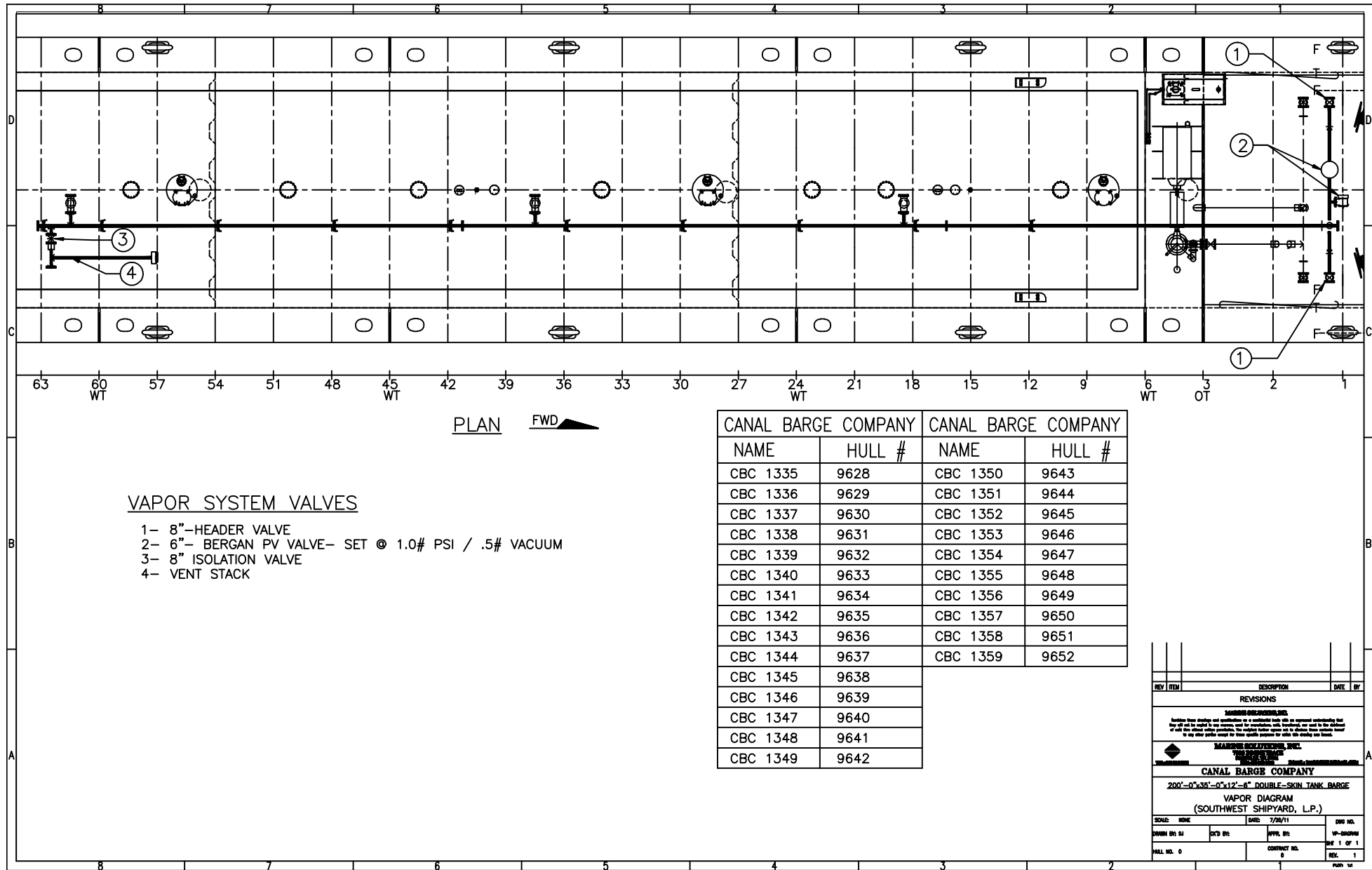
MARINE SOLUTIONS, INC.
Marine Solutions, Inc. is a registered professional engineering firm. All work is subject to the jurisdiction of the State of Texas. The Engineer's Seal is required for all work. In any other jurisdictions, the Engineer's Seal is required for all work.

MARINE SOLUTIONS, INC.
 7000 WEST 17TH STREET, SUITE 100
 DALLAS, TEXAS 75244
 TEL: 972.987.8888 FAX: 972.987.8889

CANAL BARGE COMPANY
 2007-07-335-07x12'-6" DOUBLE-SKIN TANK BARGE
 CARGO PIPE DIAGRAM
 (SOUTHWEST SHIPYARD, L.P.)

SCALE: NOT TO SCALE	DATE: 7/20/11	DWG NO.
DRAWN BY: SSJ	EXTD BY:	CP-DIAGRAM
APPR. BY:	CONTRACT NO.	SHEET 1 OF 1
HULL NO. SEE CHART	0	REV. 2

PLAN 1



REV	ITEM	DESCRIPTION	DATE	BY
REVISIONS				
<small> WARNING: THIS DRAWING IS THE PROPERTY OF CANAL BARGE COMPANY. IT IS TO BE USED ONLY FOR THE PROJECT AND VESSEL IDENTIFIED HEREON. ANY REUSE OR MODIFICATION OF THIS DRAWING WITHOUT THE WRITTEN PERMISSION OF CANAL BARGE COMPANY IS STRICTLY PROHIBITED. THE DRAWING NUMBER APPEARING ON THIS DRAWING IS THE ONLY IDENTIFICATION NUMBER TO BE USED FOR ORDERING AND TRACKING THIS DRAWING. </small>				
CANAL BARGE COMPANY 200'-0"x35'-0"x12'-6" DOUBLE-SKIN TANK BARGE VAPOR DIAGRAM (SOUTHWEST SHIPYARD, L.P.)				
SCALE:	DATE:	DATE:	DATE:	DATE:
DRAWN BY: SJ	CHKD BY:	APPR. BY:	DATE:	DATE:
HULL NO. 0	CONTRACT NO. 0	REV. 1	DATE:	DATE: