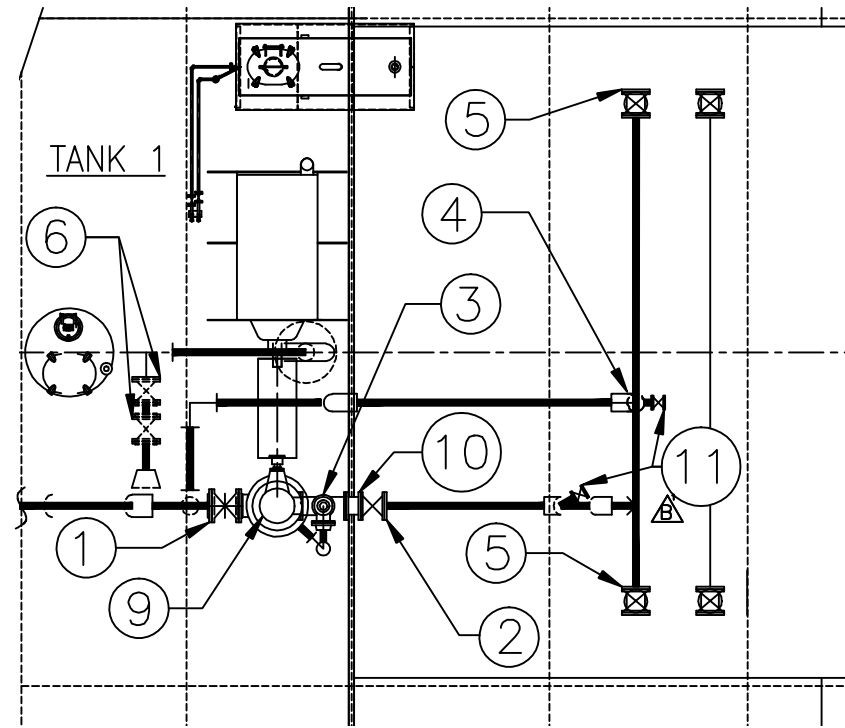
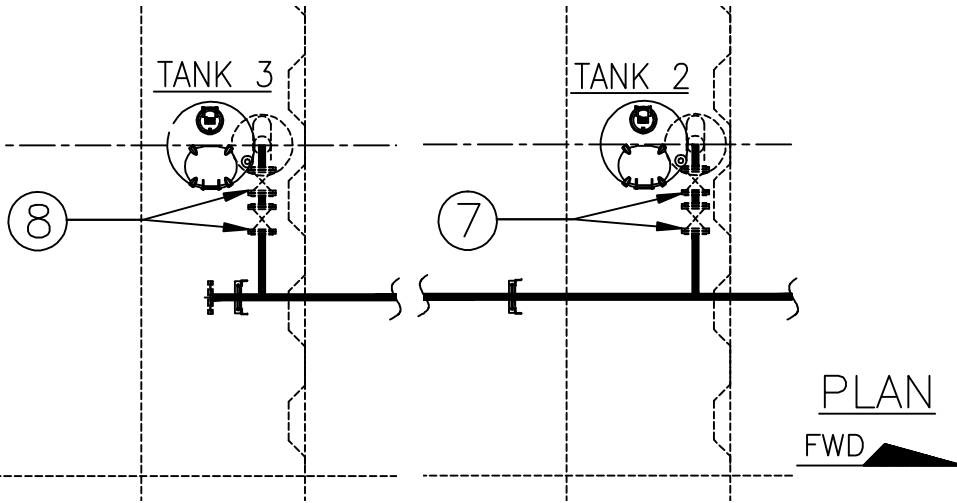


ABV & BLW DK



CAPACITY—SHORT TONS AT VARIOUS DRAFTS				
DRAFT	TOTAL	CT1	CT2	CT3
6'-0"	818.1	264.1	296.8	257.4
6'-3"	871.1	282.6	317.4	271.1
6'-6"	924.0	301.2	338.1	284.7
6'-9"	977.2	319.9	359.0	298.3
7'-0"	1030.2	338.7	379.9	311.7
7'-3"	1083.6	357.6	400.9	325.1
7'-6"	1136.9	376.5	421.9	338.5
7'-9"	1190.2	395.5	443.1	351.7
8'-0"	1243.7	414.6	464.3	364.9
8'-3"	1297.3	433.8	485.6	378.0
8'-6"	1350.9	453.0	506.9	391.0
8'-9"	1404.6	472.3	528.4	404.0
9'-0"	1458.4	491.6	549.9	416.9
9'-3"	1512.2	511.1	571.5	429.7
9'-6"	1566.1	530.6	593.1	442.5
9'-9"	1620.1	550.1	614.8	455.2
10'-0"	1674.1	569.7	636.6	467.9
10'-3"	1728.2	589.4	658.4	480.4
10'-6"	1782.4	609.1	680.3	493.0

CARGO SYSTEM VALVES

- 1 - 10" - MASTER SUCTION VALVE
- 2 - 8" - DISCHARGE VALVE
- 3 - 6"x4" - PRESSURE RELIEF VALVE
- 4 - 8" - LOAD VALVE
- 5 - 8" - PORT & STBD HEADER VALVES
- 6 - 8" - TK 1 FILL / SUCTION VALVE
- 7 - 8" - TK 2 FILL / SUCTION VALVE
- 8 - 8" - TK 3 FILL / SUCTION VALVE
- 9 - PUMP
- 10 - 8" - CHECK VALVE
- 11 - 2" - DRAIN VALVE

MAX. CAPACITY—BBL (FULL)				
	TOTAL	CT1	CT2	CT3
	11186.30	3510.12	4064.02	3612.26

MAX. CAPACITY—CU FT (95%)				
	TOTAL	CT1	CT2	CT3
	59666.25	18721.98	21676.95	19267.32

NAME	HULL #	NAME	HULL #
CBC 1339	9632	CBC 1350	9643
CBC 1340	9633	CBC 1351	9644
CBC 1341	9634	CBC 1352	9645
CBC 1342	9635	CBC 1353	9646
CBC 1343	9636	CBC 1354	9647
CBC 1344	9637	CBC 1355	9648
CBC 1345	9638	CBC 1356	9649
CBC 1346	9639	CBC 1357	9650
CBC 1347	9640	CBC 1358	9651
CBC 1348	9641	CBC 1359	9652
CBC 1349	9642		

REV	NO	DESCRIPTION	DATE	BY
1	A	ADDED 2" VALVES	6/9/11	SSJ
1	A	ADDED CAPACITY CHARTS	6/9/11	SSJ

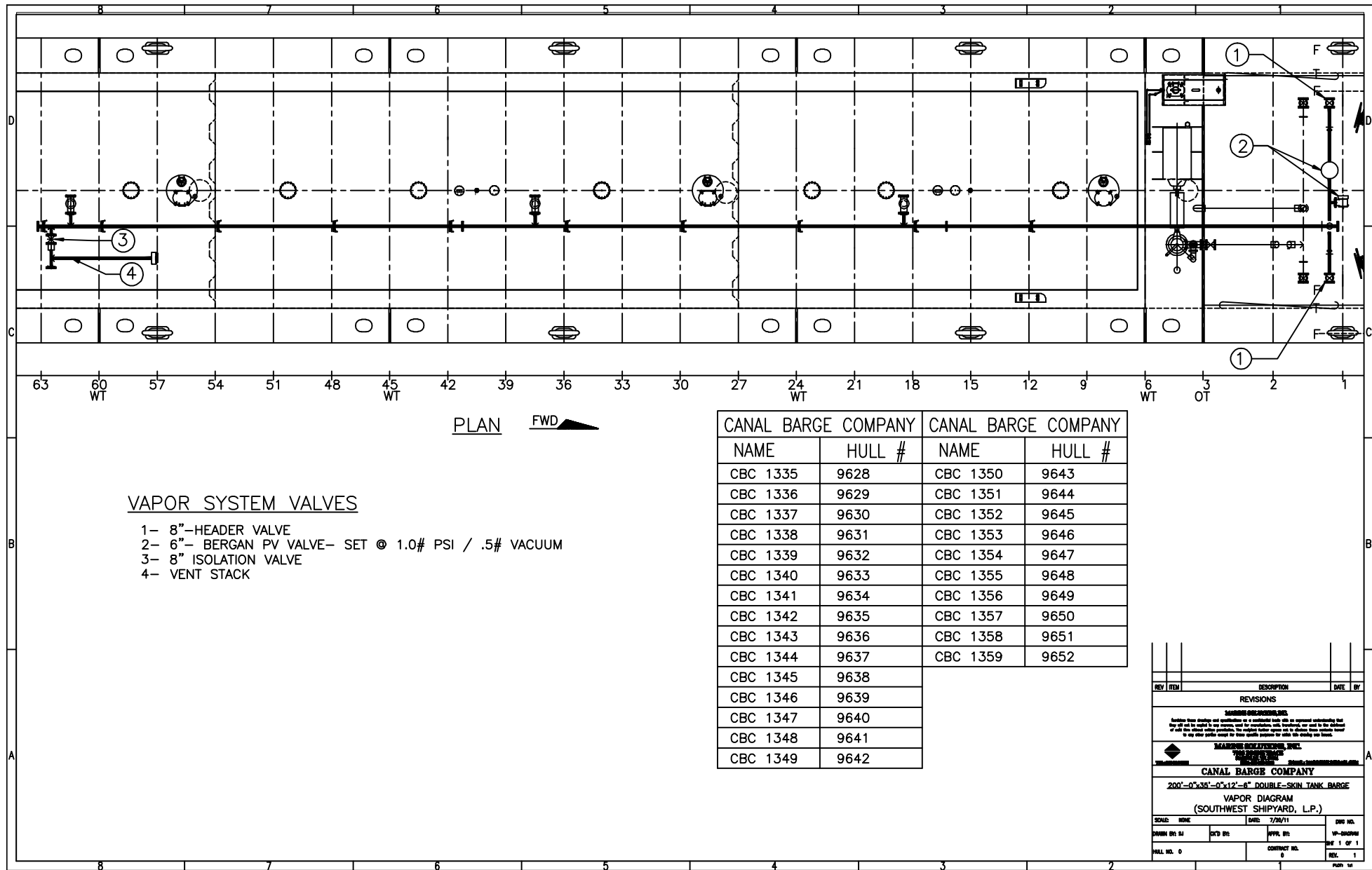
REVISIONS

MARINE SOLUTIONS, INC.
Marine Sales and Distribution in a worldwide tank with an equivalent understanding that all will be subject to any changes, and the purchaser shall be responsible for such to the extent of any other parties except to those parties named on this drawing.

MARINE SOLUTIONS, INC.
 7000 WEST 10TH AVENUE, SUITE 100
 DENVER, COLORADO 80202
 TEL: 303.750.0000 FAX: 303.750.0001

CANAL BARGE COMPANY
 2007-07-335-07x12-6" DOUBLE-SKIN TANK BARGE
 CARGO PIPE DIAGRAM
 (SOUTHWEST SHIPYARD, L.P.)

SCALE: NOT TO SCALE	DATE: 7/20/11	DWG NO.
DRAWN BY: SJ	EXTD BY:	CP-DRAWING
APPR. BY:	CONTRACT NO.	SHEET 1 OF 1
HULL NO. SEE CHART	REV. 0	PLAN 1



PLAN FWD

VAPOR SYSTEM VALVES

- 1- 8"-HEADER VALVE
- 2- 6"- BERGAN PV VALVE- SET @ 1.0# PSI / .5# VACUUM
- 3- 8" ISOLATION VALVE
- 4- VENT STACK

CANAL BARGE COMPANY		CANAL BARGE COMPANY	
NAME	HULL #	NAME	HULL #
CBC 1335	9628	CBC 1350	9643
CBC 1336	9629	CBC 1351	9644
CBC 1337	9630	CBC 1352	9645
CBC 1338	9631	CBC 1353	9646
CBC 1339	9632	CBC 1354	9647
CBC 1340	9633	CBC 1355	9648
CBC 1341	9634	CBC 1356	9649
CBC 1342	9635	CBC 1357	9650
CBC 1343	9636	CBC 1358	9651
CBC 1344	9637	CBC 1359	9652
CBC 1345	9638		
CBC 1346	9639		
CBC 1347	9640		
CBC 1348	9641		
CBC 1349	9642		

REV	ITEM	DESCRIPTION	DATE	BY
REVISIONS				
<small>REVISIONS ARE TO BE MADE BY THE DESIGNER. THE CONTRACTOR SHALL VERIFY THE REVISIONS AND REPORT TO THE DESIGNER. THE CONTRACTOR SHALL BE RESPONSIBLE FOR THE CORRECTION OF ALL REVISIONS. THE CONTRACTOR SHALL BE RESPONSIBLE FOR THE CORRECTION OF ALL REVISIONS. THE CONTRACTOR SHALL BE RESPONSIBLE FOR THE CORRECTION OF ALL REVISIONS.</small>				
CANAL BARGE COMPANY 200'-0"x35'-0"x12'-6" DOUBLE-SKIN TANK BARGE VAPOR DIAGRAM (SOUTHWEST SHIPYARD, L.P.)				
SCALE:	DATE:	DATE:	DATE:	DATE:
DRAWN BY:	CHECK BY:	APP. BY:	DATE:	DATE:
HULL NO. 0	CONTRACT NO. 0	REV. 1	REV. 1	REV. 1