

PLAN ABV & BLW DK



△ CAPACITY—SHORT TONS AT VARIOUS DRAFTS

DRAFT	TOTAL	CT1	CT2	CT3
6'-0"	818.1	264.1	296.8	257.4
6'-3"	871.1	282.6	317.4	271.1
6'-6"	924.0	301.2	338.1	284.7
6'-9"	977.2	319.9	359.0	298.3
7'-0"	1030.2	338.7	379.9	311.7
7'-3"	1083.6	357.6	400.9	325.1
7'-6"	1136.9	376.5	421.9	338.5
7'-9"	1190.2	395.5	443.1	351.7
8'-0"	1243.7	414.6	464.3	364.9
8'-3"	1297.3	433.8	485.6	378.0
8'-6"	1350.9	453.0	506.9	391.0
8'-9"	1404.6	472.3	528.4	404.0
9'-0"	1458.4	491.6	549.9	416.9
9'-3"	1512.2	511.1	571.5	429.7
9'-6"	1566.1	530.6	593.1	442.5
9'-9"	1620.1	550.1	614.8	455.2
10'-0"	1674.1	569.7	636.6	467.9
10'-3"	1728.2	589.4	658.4	480.4
10'-6"	1782.4	609.1	680.3	493.0

CARGO SYSTEM VALVES

- 1- 10"-MASTER SUCTION VALVE
- 2- 8"- DISCHARGE VALVE
- 3- 6"x4"- PRESSURE RELIEF VALVE
- 4- 8"- LOAD VALVE
- 5- 8"- PORT & STBD HEADER VALVES
- 6- 8"- TK 1 FILL / SUCTION VALVE
- 7- 8"- TK 2 FILL / SUCTION VALVE
- 8- 8"- TK 3 FILL / SUCTION VALVE
- 9- PUMP
- 10- 8"- CHECK VALVE
- △ 11- 2"- DRAIN VALVE
- △ 12- 2"- BY PASS VALVE

△ MAX. CAPACITY—BBL (FULL)			
TOTAL	CT1	CT2	CT3
11186.30	3510.12	4064.02	3612.26

△ MAX. CAPACITY—CU FT (95%)			
TOTAL	CT1	CT2	CT3
59666.25	18721.98	21676.95	19267.32

NAME	HULL #	NAME	HULL #
△ CBC 1339	9632	CBC 1350	9643
△ CBC 1340	9633	CBC 1351	9644
△ CBC 1341	9634	CBC 1352	9645
△ CBC 1342	9635	CBC 1353	9646
CBC 1343	9636	CBC 1354	9647
CBC 1344	9637	CBC 1355	9648
CBC 1345	9638	CBC 1356	9649
CBC 1346	9639	CBC 1357	9650
CBC 1347	9640	CBC 1358	9651
CBC 1348	9641	CBC 1359	9652
CBC 1349	9642		

REV	ITEM	DESCRIPTION	DATE	BY
D	1	REVISIONS		
C	1	REVISIONS		
B	1	ADDED 2" VALVES	1/20/11	SSJ
A	1	ADDED CAPACITY CHARTS	1/21/11	SSJ

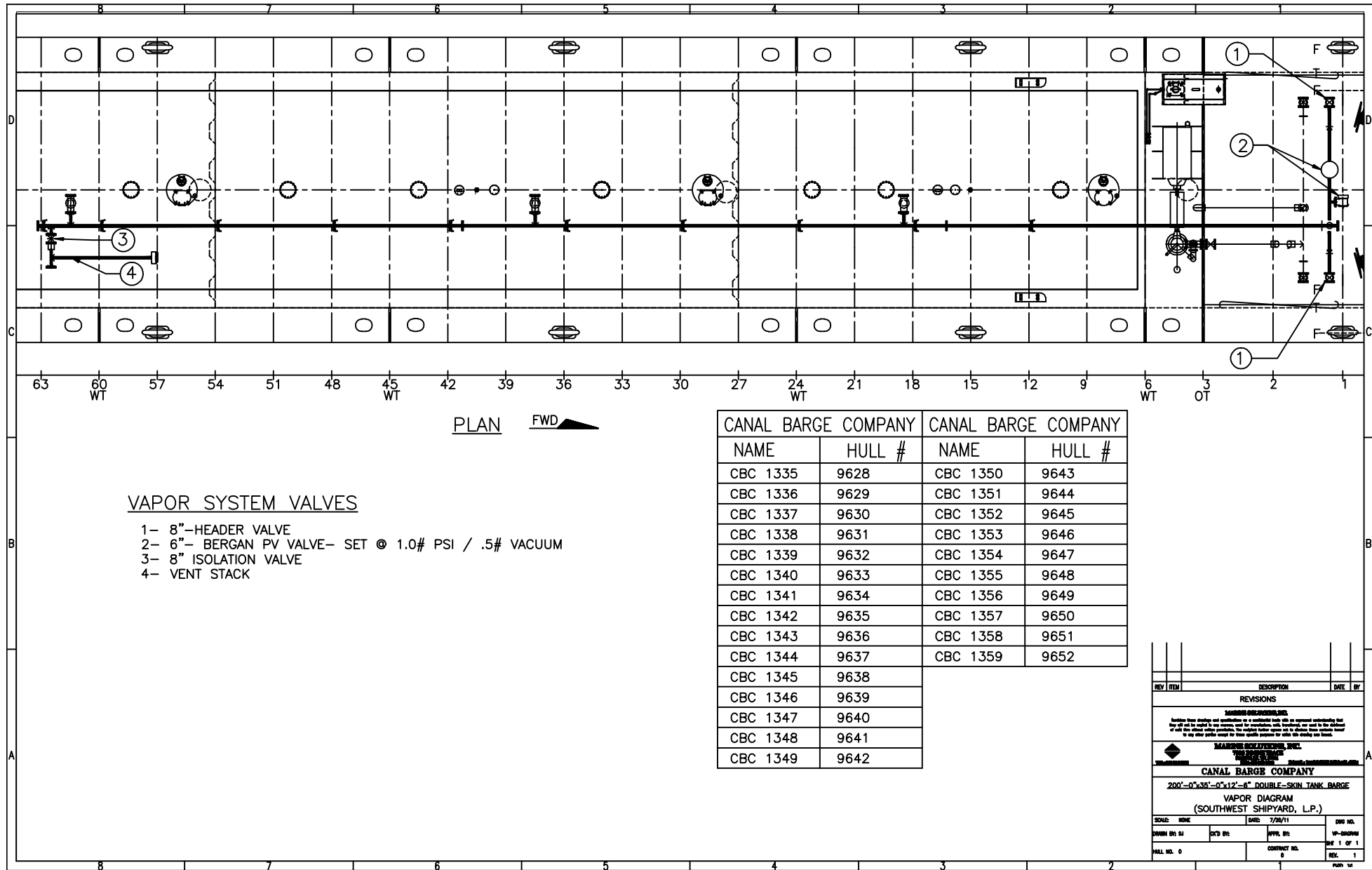
REVISIONS

MANRIVE SOLIDWORKS, INC.
Autodesk these drawings and specifications are a confidential trade secret and are intended for the use of the client only. No part of these drawings and specifications may be reproduced, stored in a retrieval system, or transmitted, in any form or by any means, electronic, mechanical, photocopying, recording, or by any information storage and retrieval system, without the prior written permission of ManRive SolidWorks, Inc.

CANAL BARGE COMPANY
 200'-0"x35'-0"x12'-6" DOUBLE-SKIN TANK BARGE
 CARGO PIPE DIAGRAM
 (SOUTHWEST SHIPYARD, L.P.)

SCALE: NOT TO SCALE	DATE: 7/20/11	DWG NO.:
DRAWN BY: SJ	CHKD BY:	APPV. BY:
HALL NO. SEE CHVT	CONTRACT NO. 0	REV. 4

OP-DRAWING
 SHEET 1 OF 1
 PLAN 1



PLAN FWD

VAPOR SYSTEM VALVES

- 1- 8"-HEADER VALVE
- 2- 6"- BERGAN PV VALVE- SET @ 1.0# PSI / .5# VACUUM
- 3- 8" ISOLATION VALVE
- 4- VENT STACK

CANAL BARGE COMPANY		CANAL BARGE COMPANY	
NAME	HULL #	NAME	HULL #
CBC 1335	9628	CBC 1350	9643
CBC 1336	9629	CBC 1351	9644
CBC 1337	9630	CBC 1352	9645
CBC 1338	9631	CBC 1353	9646
CBC 1339	9632	CBC 1354	9647
CBC 1340	9633	CBC 1355	9648
CBC 1341	9634	CBC 1356	9649
CBC 1342	9635	CBC 1357	9650
CBC 1343	9636	CBC 1358	9651
CBC 1344	9637	CBC 1359	9652
CBC 1345	9638		
CBC 1346	9639		
CBC 1347	9640		
CBC 1348	9641		
CBC 1349	9642		

REV	ITEM	DESCRIPTION	DATE	BY
REVISIONS				
<small> WARNING: THIS DRAWING IS THE PROPERTY OF CANAL BARGE COMPANY. IT IS TO BE USED ONLY FOR THE PROJECT AND VESSEL IDENTIFIED HEREON. ANY REUSE OR MODIFICATION OF THIS DRAWING WITHOUT THE WRITTEN PERMISSION OF CANAL BARGE COMPANY IS STRICTLY PROHIBITED. THE DRAWING NUMBER APPEARING ON THIS DRAWING IS THE ONLY IDENTIFICATION NUMBER TO BE USED FOR ORDERING AND PURCHASING PARTS. </small>				
CANAL BARGE COMPANY 200'-0"x35'-0"x12'-6" DOUBLE-SKIN TANK BARGE VAPOR DIAGRAM (SOUTHWEST SHIPYARD, L.P.)				
SCALE:	SIZE:	DATE:	DWG. NO.:	
DRAWN BY: SJ	CHKD BY:	APPR. BY:	VP-260004	
HULL NO. 0	CONTRACT NO. 0		SHEET 1 OF 1	
			REV. 1	

