

PLAN ABV & BLW DK



△ CAPACITY-SHORT TONS AT VARIOUS DRAFTS

DRAFT	TOTAL	CT1	CT2	CT3
6'-0"	818.1	264.1	296.8	257.4
6'-3"	871.1	282.6	317.4	271.1
6'-6"	924.0	301.2	338.1	284.7
6'-9"	977.2	319.9	359.0	298.3
7'-0"	1030.2	338.7	379.9	311.7
7'-3"	1083.6	357.6	400.9	325.1
7'-6"	1136.9	376.5	421.9	338.5
7'-9"	1190.2	395.5	443.1	351.7
8'-0"	1243.7	414.6	464.3	364.9
8'-3"	1297.3	433.8	485.6	378.0
8'-6"	1350.9	453.0	506.9	391.0
8'-9"	1404.6	472.3	528.4	404.0
9'-0"	1458.4	491.6	549.9	416.9
9'-3"	1512.2	511.1	571.5	429.7
9'-6"	1566.1	530.6	593.1	442.5
9'-9"	1620.1	550.1	614.8	455.2
10'-0"	1674.1	569.7	636.6	467.9
10'-3"	1728.2	589.4	658.4	480.4
10'-6"	1782.4	609.1	680.3	493.0

CARGO SYSTEM VALVES

- 1- 10"-MASTER SUCTION VALVE
- 2- 8"- DISCHARGE VALVE
- 3- 6"x4"- PRESSURE RELIEF VALVE
- 4- 8"- LOAD VALVE
- 5- 8"- PORT & STBD HEADER VALVES
- 6- 8"- TK 1 FILL / SUCTION VALVE
- 7- 8"- TK 2 FILL / SUCTION VALVE
- 8- 8"- TK 3 FILL / SUCTION VALVE
- 9- PUMP
- 10- 8"- CHECK VALVE
- 11- 2"- DRAIN VALVE
- 12- 2"- BY PASS VALVE

△ MAX. CAPACITY-BBL (FULL)

TOTAL	CT1	CT2	CT3
11186.30	3510.12	4064.02	3612.26

△ MAX. CAPACITY-CU FT (95%)

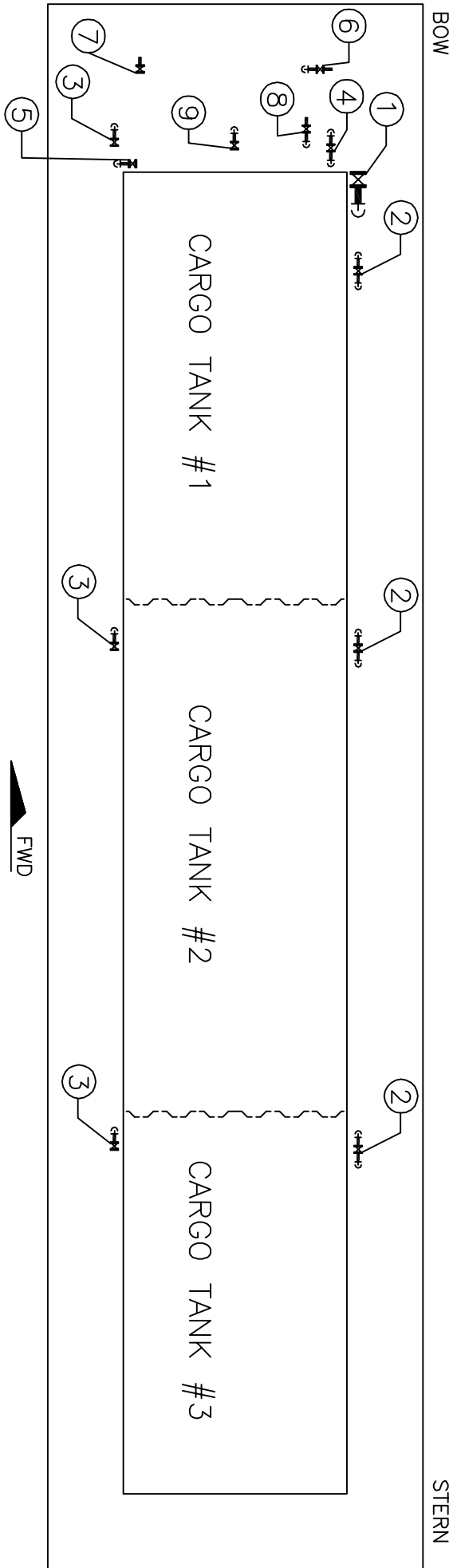
TOTAL	CT1	CT2	CT3
59666.25	18721.98	21676.95	19267.32

NAME	HULL #	NAME	HULL #
CBC 1339	9632	CBC 1350	9643
CBC 1340	9633	CBC 1351	9644
CBC 1341	9634	CBC 1352	9645
CBC 1342	9635	CBC 1353	9646
CBC 1343	9636	CBC 1354	9647
CBC 1344	9637	CBC 1355	9648
CBC 1345	9638	CBC 1356	9649
CBC 1346	9639	CBC 1357	9650
CBC 1347	9640	CBC 1358	9651
CBC 1348	9641	CBC 1359	9652
CBC 1349	9642		

REV	REV ITEM	DESCRIPTION	DATE	BY
E	1	REMOVED HULL PENETRATIONS	9/29/11	SSJ
D	1	RESTRICTED HULL/ ADDED BR-NES VAL	9/7/11	SSJ
C	1	RESTRICTED HULL/ RESTORED VIEW / RESTORED BR-NES VAL	9/29/11	SSJ
B	1	ADDED 2" VALVES	9/29/11	SSJ
A	1	ADDED CAPACITY CHARTS	9/29/11	SSJ

REVISIONS

MARKING INDUSTRIES, INC.
THE SOUTH WEST SHIPYARD
 200'-0"x35'-0"x12'-6" DOUBLE-SKIN TANK BARGE
 CARGO PIPE DIAGRAM
 (SOUTHWEST SHIPYARD, L.P.)
 SCALE: NOT TO SCALE DATE: 7/20/11
 DRAWN BY: S1 PCD BR: DATE: 7/20/11
 HULL NO. SEE CHART CONTRACT NO. 0 REV. 5



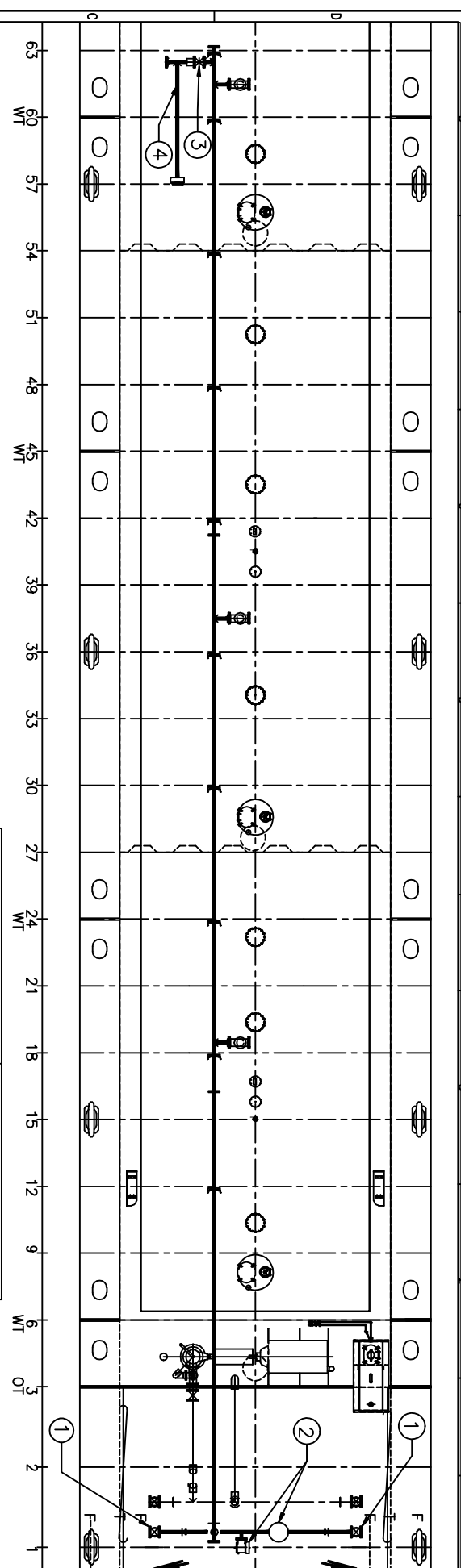
STEAM SYSTEM VALVES

- 1- 4" STEAM SUPPLY SHORE CONNECTION
- 2- 2" STEAM SUPPLY VALVE
- 3- 1" STEAM CONDENSATE RETURN VALVE
- 4- 2" STEAM SUPPLY VALVE TO DW CAN
- 5- 1" STEAM CONDENSATE RETURN VALVE FROM DW CAN
- 6- 2" STEAM SUPPLY VALVE TO PIPE HEADER
- 7- 1" STEAM CONDENSATE RETURN VALVE FROM PIPE HEADER
- 8- 2" STEAM SUPPLY VALVE TO PIPE LINE
- 9- 1" STEAM CONDENSATE RETURN VALVE FROM PIPE LINE

HULL #	9639	9640
NAME	CBC 1346	CBC 1347
OF #	1237396	1237397
YR BUILT	2012	2012

REV	REV	DESCRIPTION	DATE	BY

MAKING SOLUTIONS, INC.
 2001-05-305-03X1Z-56" DOUBLE-SKIN TANK BARGE
 BUILDER - SOUTHWEST SHIPYARD, L.P.
 CANAL BARGE COMPANY
 2001-05-305-03X1Z-56" DOUBLE-SKIN TANK BARGE
 STEAM PIPE DIAGRAM
 SHEET 1 OF 1
 DATE: 07/12/12
 DRAWN BY: JPD
 CHECKED BY: JPD
 PROJECT NO.:
 CONTRACT NO.:
 HULL NO.: 9639/40
 SHEET: 1 OF 1



PLAN FWD

VAPOR SYSTEM VALVES

- 1- 8"-HEADER VALVE
- 2- 6"- BERGAN PV VALVE- SET @ 1.0# PSI / .5# VACUUM
- 3- 8" ISOLATION VALVE
- 4- VENT STACK

CANAL BARGE COMPANY	HULL #	CANAL BARGE COMPANY	HULL #
CBC 1335	9628	CBC 1350	9643
CBC 1336	9629	CBC 1351	9644
CBC 1337	9630	CBC 1352	9645
CBC 1338	9631	CBC 1353	9646
CBC 1339	9632	CBC 1354	9647
CBC 1340	9633	CBC 1355	9648
CBC 1341	9634	CBC 1356	9649
CBC 1342	9635	CBC 1357	9650
CBC 1343	9636	CBC 1358	9651
CBC 1344	9637	CBC 1359	9652
CBC 1345	9638		
CBC 1346	9639		
CBC 1347	9640		
CBC 1348	9641		
CBC 1349	9642		

REVISIONS

REV	DATE	DESCRIPTION	BY	CR

MARKING INFORMATION, ETC.

CANAL BARGE COMPANY

200'-0"X38'-0"X12'-6" DOUBLE-SKIN TANK BARGE
 VAPOR DIAGRAM
 (SOUTHWEST SHIPYARD, L.P.)

SCALE	DATE	DESIGNER	CHECKER	DATE	SCALE

DATE: 7/24/11
 SHEET NO. 1 OF 1
 PROJECT NO. 0
 DRAWING NO. 0