

PLAN ABV & BLW DK



△ CAPACITY—SHORT TONS AT VARIOUS DRAFTS

DRAFT	TOTAL	CT1	CT2	CT3
6'-0"	818.1	264.1	296.8	257.4
6'-3"	871.1	282.6	317.4	271.1
6'-6"	924.0	301.2	338.1	284.7
6'-9"	977.2	319.9	359.0	298.3
7'-0"	1030.2	338.7	379.9	311.7
7'-3"	1083.6	357.6	400.9	325.1
7'-6"	1136.9	376.5	421.9	338.5
7'-9"	1190.2	395.5	443.1	351.7
8'-0"	1243.7	414.6	464.3	364.9
8'-3"	1297.3	433.8	485.6	378.0
8'-6"	1350.9	453.0	506.9	391.0
8'-9"	1404.6	472.3	528.4	404.0
9'-0"	1458.4	491.6	549.9	416.9
9'-3"	1512.2	511.1	571.5	429.7
9'-6"	1566.1	530.6	593.1	442.5
9'-9"	1620.1	550.1	614.8	455.2
10'-0"	1674.1	569.7	636.6	467.9
10'-3"	1728.2	589.4	658.4	480.4
10'-6"	1782.4	609.1	680.3	493.0

CARGO SYSTEM VALVES

- 1- 10"-MASTER SUCTION VALVE
- 2- 8"- DISCHARGE VALVE
- 3- 6"x4"- PRESSURE RELIEF VALVE
- 4- 8"- LOAD VALVE
- 5- 8"- PORT & STBD HEADER VALVES
- 6- 8"- TK 1 FILL / SUCTION VALVE
- 7- 8"- TK 2 FILL / SUCTION VALVE
- 8- 8"- TK 3 FILL / SUCTION VALVE
- 9- PUMP
- 10- 8"- CHECK VALVE
- △ 11- 2"- DRAIN VALVE
- △ 12- 2"- BY PASS VALVE

△ MAX. CAPACITY—BBL (FULL)

TOTAL	CT1	CT2	CT3
11186.30	3510.12	4064.02	3612.26

△ MAX. CAPACITY—CU FT (95%)

TOTAL	CT1	CT2	CT3
59666.25	18721.98	21676.95	19267.32

NAME	HULL #	NAME	HULL #
△ CBC 1339	9632	CBC 1350	9643
△ CBC 1340	9633	CBC 1351	9644
△ CBC 1341	9634	CBC 1352	9645
△ CBC 1342	9635	CBC 1353	9646
CBC 1343	9636	CBC 1354	9647
CBC 1344	9637	CBC 1355	9648
CBC 1345	9638	CBC 1356	9649
CBC 1346	9639	CBC 1357	9650
CBC 1347	9640	CBC 1358	9651
CBC 1348	9641	CBC 1359	9652
CBC 1349	9642		

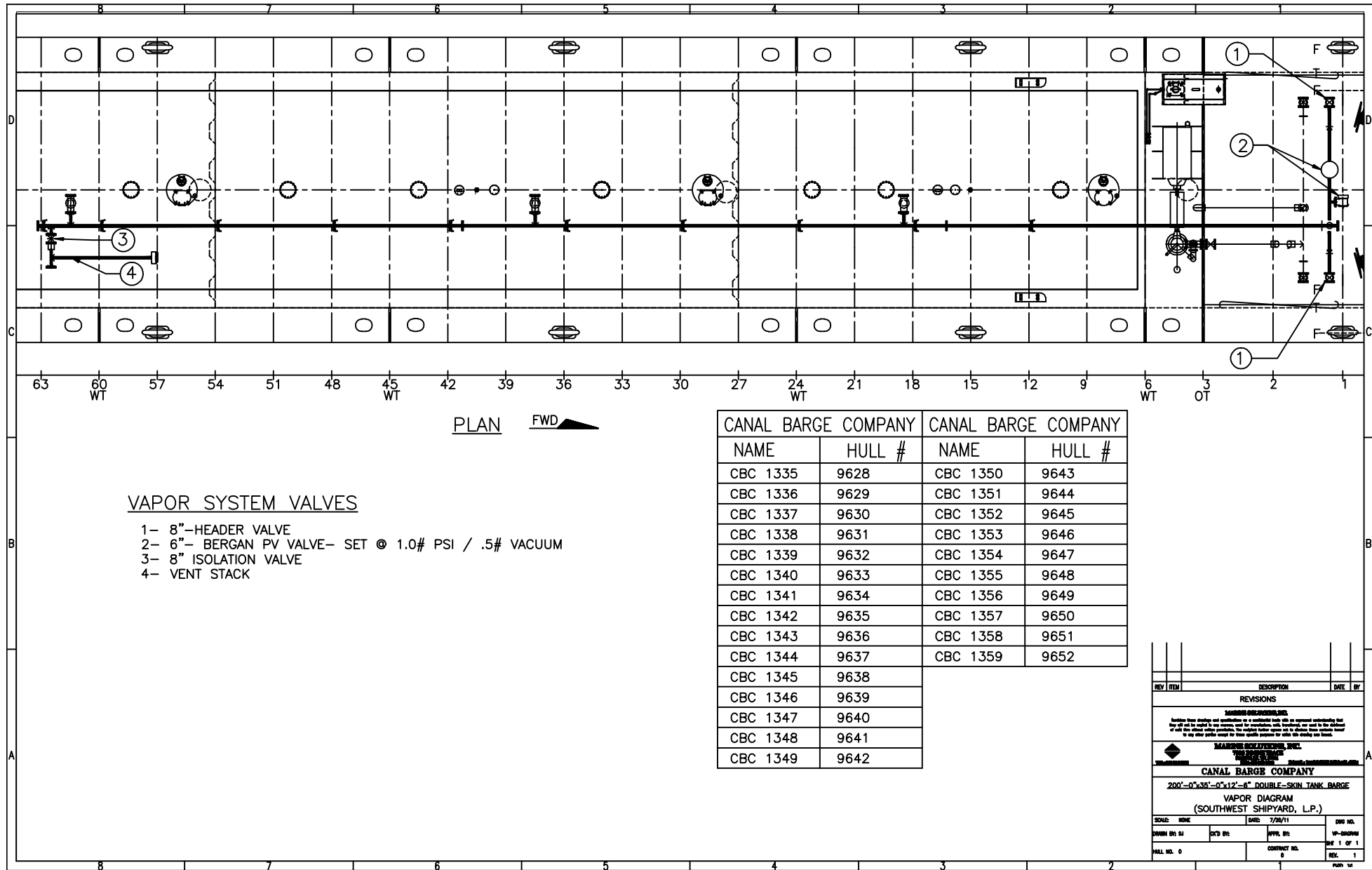
REV	ITEM	DESCRIPTION	DATE	BY
D	1	REVISIONS		
C	1	REVISIONS		
B	1	ADDED 2" VALVES	1/20/11	SSJ
A	1	ADDED CAPACITY CHARTS	1/21/11	SSJ

REVISIONS

MANRIVE SOLIDWORKS, INC.
THE REVOLUTION IN CAD

CANAL BARGE COMPANY
200'-0"x35'-0"x12'-6" DOUBLE-SKIN TANK BARGE
CARGO PIPE DIAGRAM
(SOUTHWEST SHIPYARD, L.P.)

SCALE: NOT TO SCALE DATE: 7/20/11 DWG NO.:
 DRAWN BY: SJ CVD BY: APPR. BY: CP-DRAWING:
 HALL NO. SEE CHVT CONTRACT NO. 0 SHEET 1 OF 1
 REV. 4 PLAN: 1



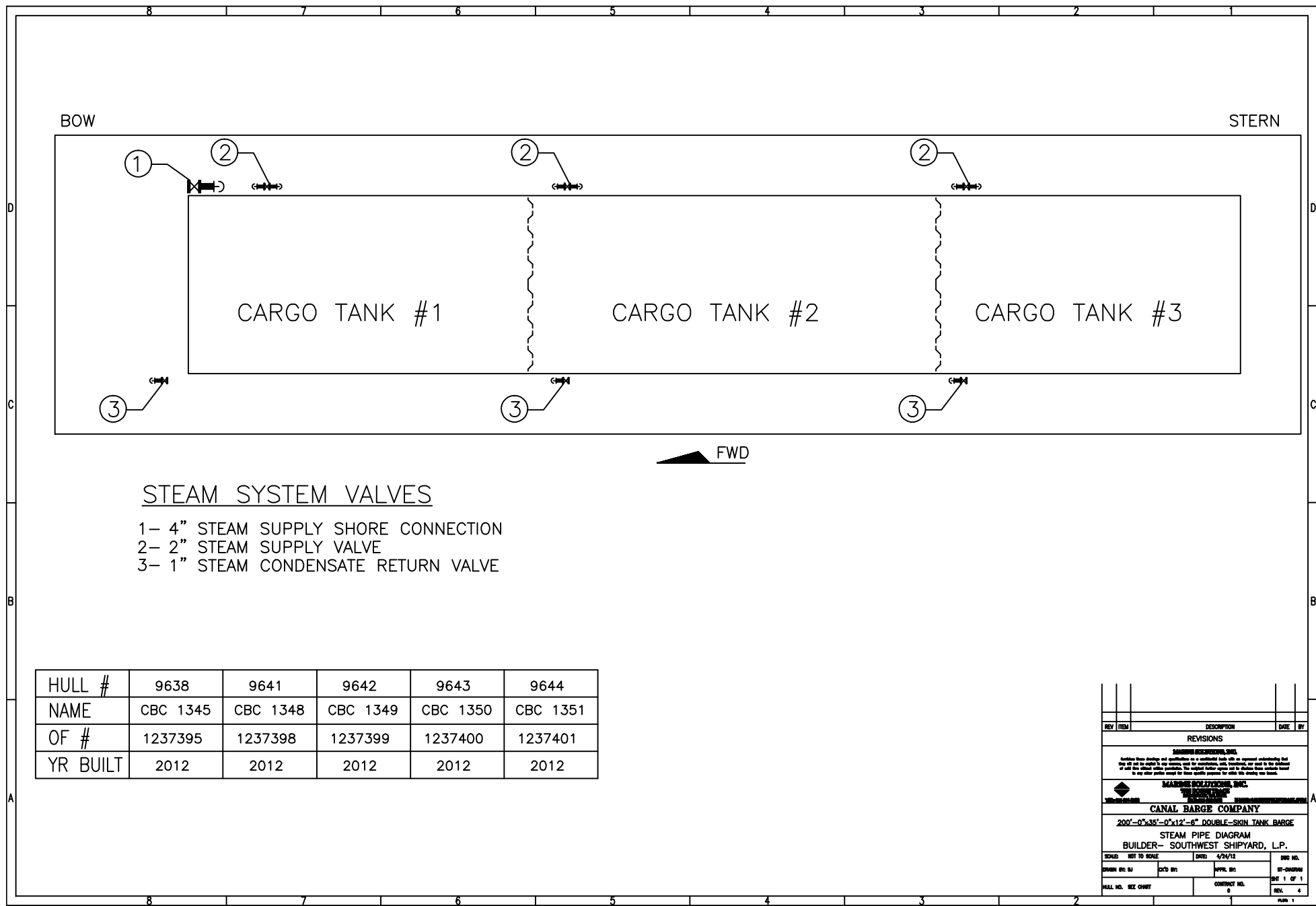
PLAN FWD

VAPOR SYSTEM VALVES

- 1- 8"-HEADER VALVE
- 2- 6"- BERGAN PV VALVE- SET @ 1.0# PSI / .5# VACUUM
- 3- 8" ISOLATION VALVE
- 4- VENT STACK

CANAL BARGE COMPANY		CANAL BARGE COMPANY	
NAME	HULL #	NAME	HULL #
CBC 1335	9628	CBC 1350	9643
CBC 1336	9629	CBC 1351	9644
CBC 1337	9630	CBC 1352	9645
CBC 1338	9631	CBC 1353	9646
CBC 1339	9632	CBC 1354	9647
CBC 1340	9633	CBC 1355	9648
CBC 1341	9634	CBC 1356	9649
CBC 1342	9635	CBC 1357	9650
CBC 1343	9636	CBC 1358	9651
CBC 1344	9637	CBC 1359	9652
CBC 1345	9638		
CBC 1346	9639		
CBC 1347	9640		
CBC 1348	9641		
CBC 1349	9642		

REV	ITEM	DESCRIPTION	DATE	BY
REVISIONS				
<small> WARNING: THIS DRAWING IS THE PROPERTY OF CANAL BARGE COMPANY. IT IS TO BE USED ONLY FOR THE PROJECT AND VESSEL IDENTIFIED HEREON. IT IS NOT TO BE REPRODUCED, COPIED, OR TRANSMITTED IN ANY FORM OR BY ANY MEANS, ELECTRONIC OR MECHANICAL, INCLUDING PHOTOCOPYING, RECORDING, OR BY ANY INFORMATION STORAGE AND RETRIEVAL SYSTEM, WITHOUT THE WRITTEN PERMISSION OF CANAL BARGE COMPANY. THE APPLICABLE BARGE SPECIFICATIONS AND VESSEL SPECIFICATIONS SHALL BE REFERRED TO FOR ALL DIMENSIONS AND REQUIREMENTS. THE APPLICABLE BARGE SPECIFICATIONS AND VESSEL SPECIFICATIONS SHALL BE REFERRED TO FOR ALL DIMENSIONS AND REQUIREMENTS. THE APPLICABLE BARGE SPECIFICATIONS AND VESSEL SPECIFICATIONS SHALL BE REFERRED TO FOR ALL DIMENSIONS AND REQUIREMENTS. </small>				
CANAL BARGE COMPANY 200'-0"x35'-0"x12'-6" DOUBLE-SKIN TANK BARGE VAPOR DIAGRAM (SOUTHWEST SHIPYARD, L.P.)				
SCALE:	SIZE:	DWG. NO.:		
DRAWN BY: SJ	CHKD BY:	APP. BY:	VP-DESIGN	SHEET 1 OF 1
HULL NO. 0	CONTRACT NO. 0		REL. 1	PLAN 14



BOW

STERN

CARGO TANK #1

CARGO TANK #2

CARGO TANK #3

FWD

STEAM SYSTEM VALVES

- 1- 4" STEAM SUPPLY SHORE CONNECTION
- 2- 2" STEAM SUPPLY VALVE
- 3- 1" STEAM CONDENSATE RETURN VALVE

HULL #	9638	9641	9642	9643	9644
NAME	CBC 1345	CBC 1348	CBC 1349	CBC 1350	CBC 1351
OF #	1237395	1237398	1237399	1237400	1237401
YR BUILT	2012	2012	2012	2012	2012

REV	ITEM	DESCRIPTION	DATE	BY
REVISIONS				
<small>APPROVED EXCLUSIONS, INC.</small>				
<small>Authorizes these drawings and specifications as a completed work with no unapproved amendments that have not yet been made in any manner, and that specifications, with amendments, are valid to the extent of all other contract documents. The project leader agrees not to allow these exclusions listed in any other portion issued for these specific purposes for which this drawing was issued.</small>				
APPROVED EXCLUSIONS, INC.				
CANAL BARGE COMPANY				
200'-0"x35'-0"x12'-6" DOUBLE-SKIN TANK BARGE				
STEAM PIPE DIAGRAM				
BUILDER- SOUTHWEST SHIPYARD, L.P.				
SCALE	NOT TO SCALE	DATE	4/24/12	DWG NO.
DRAWN BY: SJ	DATE BY:	APPR. BY:		ST-DWGNO:
HULL NO. SEE CHWT		CONTRACT NO. 0		SHEET 1 OF 1
				REV. 4