

PLAN ABV & BLW DK



△ CAPACITY—SHORT TONS AT VARIOUS DRAFTS

DRAFT	TOTAL	CT1	CT2	CT3
6'-0"	818.1	264.1	296.8	257.4
6'-3"	871.1	282.6	317.4	271.1
6'-6"	924.0	301.2	338.1	284.7
6'-9"	977.2	319.9	359.0	298.3
7'-0"	1030.2	338.7	379.9	311.7
7'-3"	1083.6	357.6	400.9	325.1
7'-6"	1136.9	376.5	421.9	338.5
7'-9"	1190.2	395.5	443.1	351.7
8'-0"	1243.7	414.6	464.3	364.9
8'-3"	1297.3	433.8	485.6	378.0
8'-6"	1350.9	453.0	506.9	391.0
8'-9"	1404.6	472.3	528.4	404.0
9'-0"	1458.4	491.6	549.9	416.9
9'-3"	1512.2	511.1	571.5	429.7
9'-6"	1566.1	530.6	593.1	442.5
9'-9"	1620.1	550.1	614.8	455.2
10'-0"	1674.1	569.7	636.6	467.9
10'-3"	1728.2	589.4	658.4	480.4
10'-6"	1782.4	609.1	680.3	493.0

CARGO SYSTEM VALVES

- 1- 10"-MASTER SUCTION VALVE
- 2- 8"- DISCHARGE VALVE
- 3- 6"x4"- PRESSURE RELIEF VALVE
- 4- 8"- LOAD VALVE
- 5- 8"- PORT & STBD HEADER VALVES
- 6- 8"- TK 1 FILL / SUCTION VALVE
- 7- 8"- TK 2 FILL / SUCTION VALVE
- 8- 8"- TK 3 FILL / SUCTION VALVE
- 9- PUMP
- 10- 8"- CHECK VALVE
- △ 11- 2"- DRAIN VALVE
- △ 12- 2"- BY PASS VALVE

△ MAX. CAPACITY—BBL (FULL)

TOTAL	CT1	CT2	CT3
11186.30	3510.12	4064.02	3612.26

△ MAX. CAPACITY—CU FT (95%)

TOTAL	CT1	CT2	CT3
59666.25	18721.98	21676.95	19267.32

NAME	HULL #	NAME	HULL #
△ CBC 1339	9632	CBC 1350	9643
△ CBC 1340	9633	CBC 1351	9644
△ CBC 1341	9634	CBC 1352	9645
△ CBC 1342	9635	CBC 1353	9646
CBC 1343	9636	CBC 1354	9647
CBC 1344	9637	CBC 1355	9648
CBC 1345	9638	CBC 1356	9649
CBC 1346	9639	CBC 1357	9650
CBC 1347	9640	CBC 1358	9651
CBC 1348	9641	CBC 1359	9652
CBC 1349	9642		

REV	ITEM	DESCRIPTION	DATE	BY
D	1	REVISIONS		
C	1	REVISIONS		
B	1	ADDED 2" VALVES	1/20/11	SSJ
A	1	ADDED CAPACITY CHARTS	1/21/11	SSJ

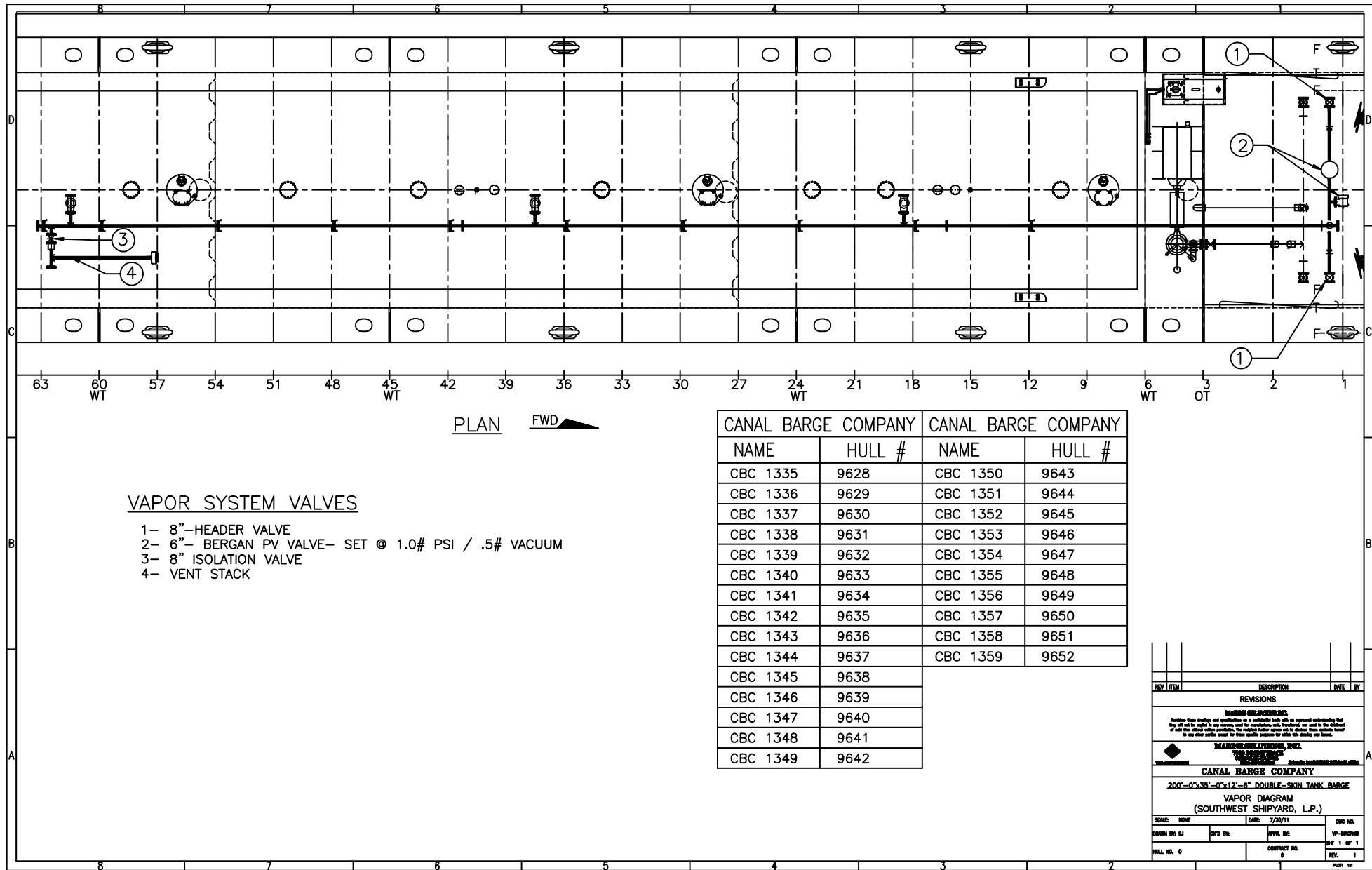
REVISIONS

MANRIVE SOLIDWORKS, INC.
Autodesk reserves all rights in this software and its associated technology. All other rights reserved. This software is provided "AS IS" without warranty of any kind, either expressed or implied, including, but not limited to, the implied warranties of merchantability and fitness for a particular purpose. The user assumes all responsibility for any damage to data or equipment caused by the use of this software.

CANAL BARGE COMPANY
 200'-0"x35'-0"x12'-6" DOUBLE-SKIN TANK BARGE
 CARGO PIPE DIAGRAM
 (SOUTHWEST SHIPYARD, L.P.)

SCALE: NOT TO SCALE	DATE: 7/20/11	DWG NO.:
DRAWN BY: SJ	CHKD BY:	APPV. BY:
HALL NO. SEE CHVT	CONTRACT NO. 0	REV. 4

OP-DRAWING
 SHEET 1 OF 1
 PLAN 1

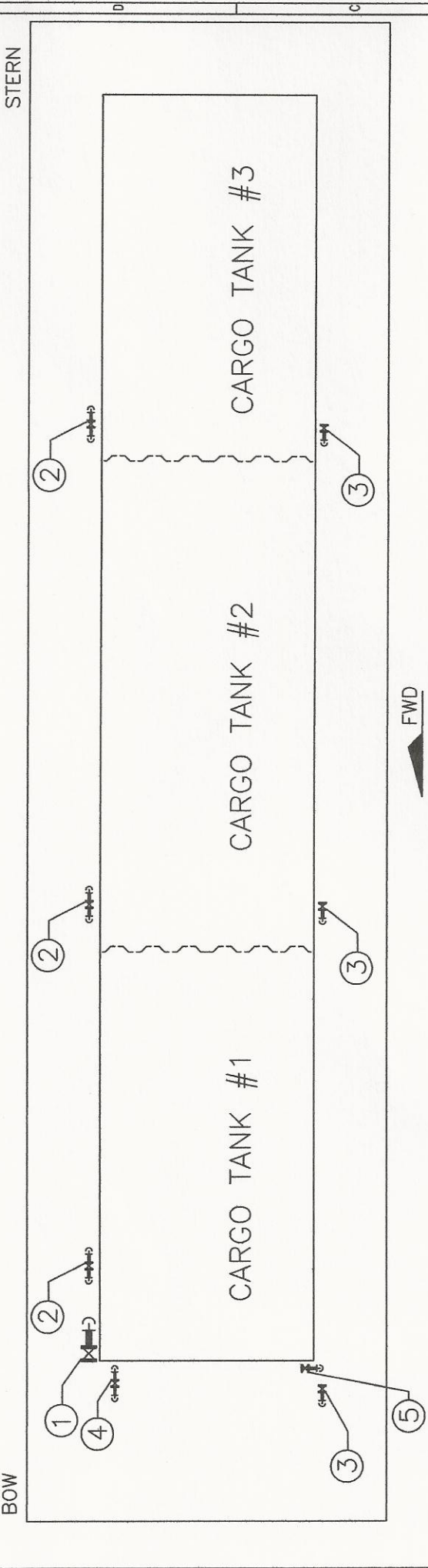


VAPOR SYSTEM VALVES

- 1- 8"-HEADER VALVE
- 2- 6"- BERGAN PV VALVE- SET @ 1.0# PSI / .5# VACUUM
- 3- 8" ISOLATION VALVE
- 4- VENT STACK

CANAL BARGE COMPANY		CANAL BARGE COMPANY	
NAME	HULL #	NAME	HULL #
CBC 1335	9628	CBC 1350	9643
CBC 1336	9629	CBC 1351	9644
CBC 1337	9630	CBC 1352	9645
CBC 1338	9631	CBC 1353	9646
CBC 1339	9632	CBC 1354	9647
CBC 1340	9633	CBC 1355	9648
CBC 1341	9634	CBC 1356	9649
CBC 1342	9635	CBC 1357	9650
CBC 1343	9636	CBC 1358	9651
CBC 1344	9637	CBC 1359	9652
CBC 1345	9638		
CBC 1346	9639		
CBC 1347	9640		
CBC 1348	9641		
CBC 1349	9642		

REV	ITEM	DESCRIPTION	DATE	BY
REVISIONS				
<small>REVISIONS ARE TO BE MADE BY THE DESIGNER. THE CONTRACTOR SHALL VERIFY THE REVISIONS AND REPORT TO THE DESIGNER. THE CONTRACTOR SHALL BE RESPONSIBLE FOR THE CORRECTION OF ALL REVISIONS. THE CONTRACTOR SHALL BE RESPONSIBLE FOR THE CORRECTION OF ALL REVISIONS. THE CONTRACTOR SHALL BE RESPONSIBLE FOR THE CORRECTION OF ALL REVISIONS.</small>				
CANAL BARGE COMPANY 200'-0"x35'-0"x12'-6" DOUBLE-SKIN TANK BARGE VAPOR DIAGRAM (SOUTHWEST SHIPYARD, L.P.)				
SCALE:	DATE:	DATE:	DATE:	DATE:
DRAWN BY:	CHECKED BY:	APPROVED BY:	DATE:	DATE:
HULL NO.:	CONTRACT NO.:	REV.:	REV.:	REV.:



STEAM SYSTEM VALVES

- 1 - 4" STEAM SUPPLY SHORE CONNECTION
- 2 - 2" STEAM SUPPLY VALVE
- 3 - 1" STEAM CONDENSATE RETURN VALVE
- 4 - 2" STEAM SUPPLY VALVE TO DW CAN
- 5 - 1" STEAM CONDENSATE RETURN VALVE FROM DW CAN

HULL #	9645	9646	9647	9648	9649	9650	9651	9652
NAME	CBC 1352	CBC 1353	CBC 1354	CBC 1355	CBC 1356	CBC 1357	CBC 1358	CBC 1359
OF #	1240875	1241346	1240876	1241348	1240877	1241345	1240878	1241347
YR BUILT	2012	2012	2012	2012	2013	2013	2013	2013

UPDATED HULL APPLICABILITY (MAY 15)

REV	DATE	DESCRIPTION	DATE I/F

REVISIONS

MARINE SOLUTIONS, INC.
 2007-05-30-05-12-08 DOUBLE-SKIN TANK BARGE
 BUILDER - SOUTHWEST SHIPYARD, L.P.

MARINE SOLUTIONS, INC.
 2007-05-30-05-12-08 DOUBLE-SKIN TANK BARGE
 BUILDER - SOUTHWEST SHIPYARD, L.P.

SCALE: NOT TO SCALE
 SHEET NO. 81
 SHEET NO. 82
 SHEET NO. 83
 SHEET NO. 84
 SHEET NO. 85
 SHEET NO. 86
 SHEET NO. 87
 SHEET NO. 88
 SHEET NO. 89
 SHEET NO. 90
 SHEET NO. 91
 SHEET NO. 92
 SHEET NO. 93
 SHEET NO. 94
 SHEET NO. 95
 SHEET NO. 96
 SHEET NO. 97
 SHEET NO. 98
 SHEET NO. 99
 SHEET NO. 100