

PLAN ABV & BLW DK

FWD

DRAFT	TOTAL	CT1	CT2	CT3
6'-0"	818.1	264.1	296.8	257.4
6'-3"	871.1	282.6	317.4	271.1
6'-6"	924.0	301.2	338.1	284.7
6'-9"	977.2	319.9	358.0	298.3
7'-0"	1030.2	338.7	379.9	311.7
7'-3"	1083.6	357.6	400.9	325.1
7'-6"	1136.9	376.5	421.9	338.5
7'-9"	1190.2	395.5	443.1	351.7
8'-0"	1243.7	414.6	464.3	364.9
8'-3"	1297.3	433.8	485.6	378.0
8'-6"	1350.9	453.0	506.9	391.0
8'-9"	1404.6	472.3	528.4	404.0
9'-0"	1458.4	491.6	549.9	416.9
9'-3"	1512.2	511.1	571.5	429.7
9'-6"	1566.1	530.6	593.1	442.5
9'-9"	1620.1	550.1	614.8	455.2
10'-0"	1674.1	569.7	636.6	467.9
10'-3"	1728.2	589.4	658.4	480.4
10'-6"	1782.4	609.1	680.3	493.0

CARGO SYSTEM VALVES

- 1 - 10" - MASTER SUCTION VALVE
- 2 - 8" - DISCHARGE VALVE
- 3 - 6"x4" - PRESSURE RELIEF VALVE
- 4 - 8" - LOAD VALVE
- 5 - 8" - PORT & STBD HEADER VALVES
- 6 - 8" - TK 1 FILL / SUCTION VALVE
- 7 - 8" - TK 2 FILL / SUCTION VALVE
- 8 - 8" - TK 3 FILL / SUCTION VALVE
- 9 - PUMP
- 10 - 8" - CHECK VALVE
- 11 - 2" - DRAIN VALVE
- 12 - 2" - BY PASS VALVE

MAX. CAPACITY - BRL (FULL)
 TOTAL CT1 CT2 CT3

MAX. CAPACITY - CU FT (95%)
 TOTAL CT1 CT2 CT3

MAX. CAPACITY - 25
 18721.98 21676.95 19267.32

TOTAL CT1 CT2 CT3

NAME	HULL #	NAME	HULL #
EBG-1339	9632	CBC 1355	9648
EBG-1340	9633	CBC 1356	9649
EBG-1341	9634	CBC 1357	9650
EBG-1342	9635	CBC 1358	9651
CBC 1343	9636	CBC 1359	9652
CBC 1344	9637	CBC 1360	9653
CBC 1345	9638	CBC 1361	9654
EBG-1346	9639	CBC 1362	9655
EBG-1347	9640	CBC 1363	9656
CBC 1348	9641	CBC 1364	9657
CBC 1349	9642	CBC 1365	9658
CBC 1350	9643	CBC 1366	9659
CBC 1351	9644	CBC 1367	9660
CBC 1352	9645	CBC 1368	9661
CBC 1353	9646	CBC 1369	9662
CBC 1354	9647		

REVISIONS

NO.	DATE	DESCRIPTION
1		ISSUED FOR CONSTRUCTION
2		REVISIONS
3		REVISIONS
4		REVISIONS
5		REVISIONS
6		REVISIONS
7		REVISIONS
8		REVISIONS
9		REVISIONS
10		REVISIONS

APPROVED FOR CONSTRUCTION

DATE: 11/20/21

SCALE: 1/8" = 1'-0"

PROJECT: CANAL BARBER COOPERARY

2002-03-28-03-212-01 DOUBLE-SHAFT TANK BARGE

(SOUTHWEST SHIPYARD, L.P.)

DATE: 11/20/21

SCALE: 1/8" = 1'-0"

PROJECT: CANAL BARBER COOPERARY

2002-03-28-03-212-01 DOUBLE-SHAFT TANK BARGE

(SOUTHWEST SHIPYARD, L.P.)

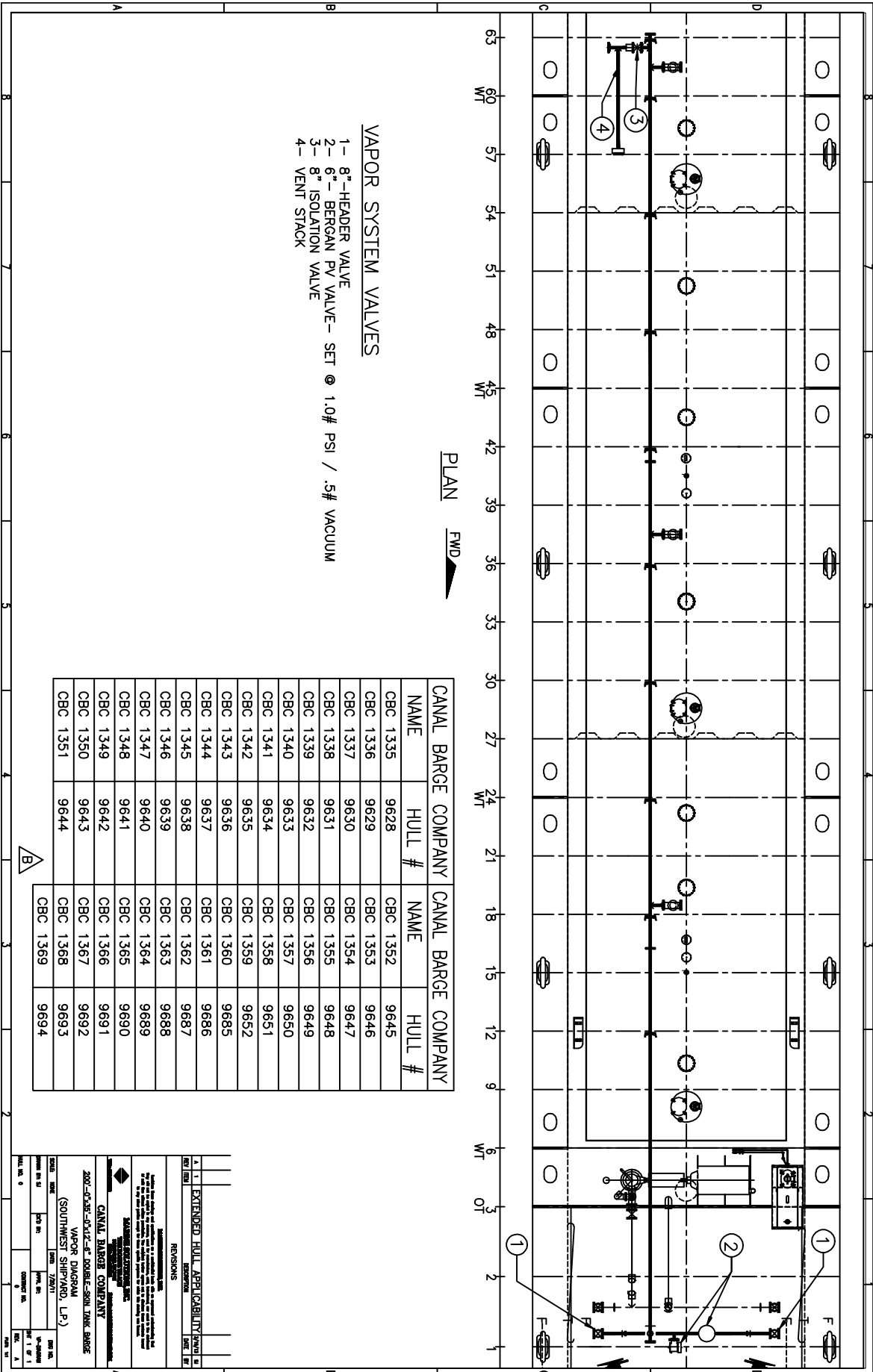
DATE: 11/20/21

SCALE: 1/8" = 1'-0"

PROJECT: CANAL BARBER COOPERARY

2002-03-28-03-212-01 DOUBLE-SHAFT TANK BARGE

(SOUTHWEST SHIPYARD, L.P.)



VAPOR SYSTEM VALVES

- 1 - 8" HEADER VALVE
- 2 - 8" BERGAN PV VALVE - SET @ 1.0# PSI / .5# VACUUM
- 3 - 8" ISOLATION VALVE
- 4 - VENT STACK

NAME	HULL #	NAME	HULL #
CBC 1335	9628	CBC 1352	9645
CBC 1336	9629	CBC 1353	9646
CBC 1337	9630	CBC 1354	9647
CBC 1338	9631	CBC 1355	9648
CBC 1339	9632	CBC 1356	9649
CBC 1340	9633	CBC 1357	9650
CBC 1341	9634	CBC 1358	9651
CBC 1342	9635	CBC 1359	9652
CBC 1343	9636	CBC 1360	9655
CBC 1344	9637	CBC 1361	9686
CBC 1345	9638	CBC 1362	9687
CBC 1346	9639	CBC 1363	9688
CBC 1347	9640	CBC 1364	9689
CBC 1348	9641	CBC 1365	9690
CBC 1349	9642	CBC 1366	9691
CBC 1350	9643	CBC 1367	9692
CBC 1351	9644	CBC 1368	9693
		CBC 1369	9694

REVISIONS

REV	DATE	DESCRIPTION	BY	CHK
1		EXTENDED HULL APPLICABILITY		

APPROVED FOR CONSTRUCTION

DESIGNED BY [Signature]

CHECKED BY [Signature]

DATE 7/27/11

SCALE 1" = 10'

PROJECT NO. 2007-0338-03412-01 DOUBLE-SIDED TANK BARGE

SHIPYARD VAPOR DIAGRAM (SOUTHWEST SHIPYARD, L.P.)

DATE 7/27/11

REV. NO. 1 OF 1