

**CARGO LOADING:**

- A OPEN VALVES NO.:5,6,7,8,9,10,11 & 12
- B CLOSE VALVES NO.:1,2
- C VENT TANKS

**CARGO DISCHARGE:**

- A OPEN VALVES NO.:1,2,6,7,8,9,10,11, & 12
- B CLOSE VALVES NO.: 5
- C VENT TANKS

**CARGO SYSTEM VALVES**

- 1 PUMP SUCTION VALVE
- 2 PUMP DISCHARGE VALVE
- 3 PUMP DISCHARGE CHECK VALVE
- 4 PRESSURE RELIEF VALVE
- 5 CARGO FILL VALVE
- 6 PORT & STBD HEADER VALVES
- 7 TK 1 FILL / SUCTION VALVE
- 8 TK 2 FILL / SUCTION VALVE
- 9 TK 3 FILL / SUCTION VALVE
- 10 TK 1 FILL / SUCTION VALVE
- 11 TK 2 FILL / SUCTION VALVE
- 12 TK 3 FILL / SUCTION VALVE
- 13 #1 STRIPPING VALVE
- 14 #2 STRIPPING VALVE
- 15 #3 STRIPPING VALVE
- PU PUMP
- 16 DEEPWELL CAN STRIPPING VALVE

**PLAN**

**TANK VOL. 100% FULL**

TANK	GAL.	BBL.	CU. FT.
1	147364	3508.69	19699.75
2	170247	4053.50	22758.77
3	151805	3641.40	20293.43
<b>TOTAL</b>	<b>469416</b>	<b>11176.57</b>	<b>62751.95</b>
		<b>98% FULL</b>	
		10952.06	

MAX CAPACITY - BBL (100%)			
11176.57	3508.69	4053.50	3641.40
TOTAL	CT1	CT2	CT3

MAX CAPACITY - CU. FT. (100%)			
62751.95	19699.75	22758.77	20293.43
TOTAL	CT1	CT2	CT3

DRAFT (FT)	CAPACITIES—SHORT TONS AT VARIOUS DRAFTS			
	TOTAL (S.T.)	1 (S.T.)	2 (S.T.)	3 (S.T.)
6.00	793.60	252.70	284.00	256.50
6.25	846.50	271.30	305.10	270.20
6.50	899.50	289.90	325.80	283.80
6.75	952.60	308.60	346.70	297.30
7.00	1005.70	327.40	367.60	310.80
7.25	1058.90	346.30	388.50	324.20
7.50	1112.30	365.20	409.60	337.50
7.75	1165.70	384.20	430.80	350.70
8.00	1219.10	403.30	452.00	363.90
8.25	1272.70	422.40	473.30	377.00
8.50	1326.30	441.70	494.60	390.00
8.75	1380.00	461.00	516.60	403.00
9.00	1433.80	480.30	537.60	415.90
9.25	1487.60	499.70	559.10	428.70
9.4167	1523.40	512.70	573.50	437.20
9.50	1541.50	519.20	580.80	441.50
9.75	1595.50	538.80	602.50	454.20
10.00	1649.50	558.40	624.30	466.90
10.25	1703.60	578.10	646.10	479.50
10.50	1757.80	597.80	668.00	492.00

**SPECIAL FEATURES**

- 1. CARGO PUMP: BYRON JACKSON MODEL 11LS14GH-3 AMARILLO GEAR S300 2100 GPM, 253' TDH @ 192 H.P.
- 2. CARGO PUMP ENGINE: MITSUBISHI DIESEL MODEL S6A3-BPU

**BARGE INFORMATION**

YEAR BUILT: 2015  
 HULL TYPE: I  
 CARGO GRADE: A & LOWER PRODUCTS PER SUBCHAPTER "D" AND LIMITED SUBCHAPTER "O" PRODUCTS.

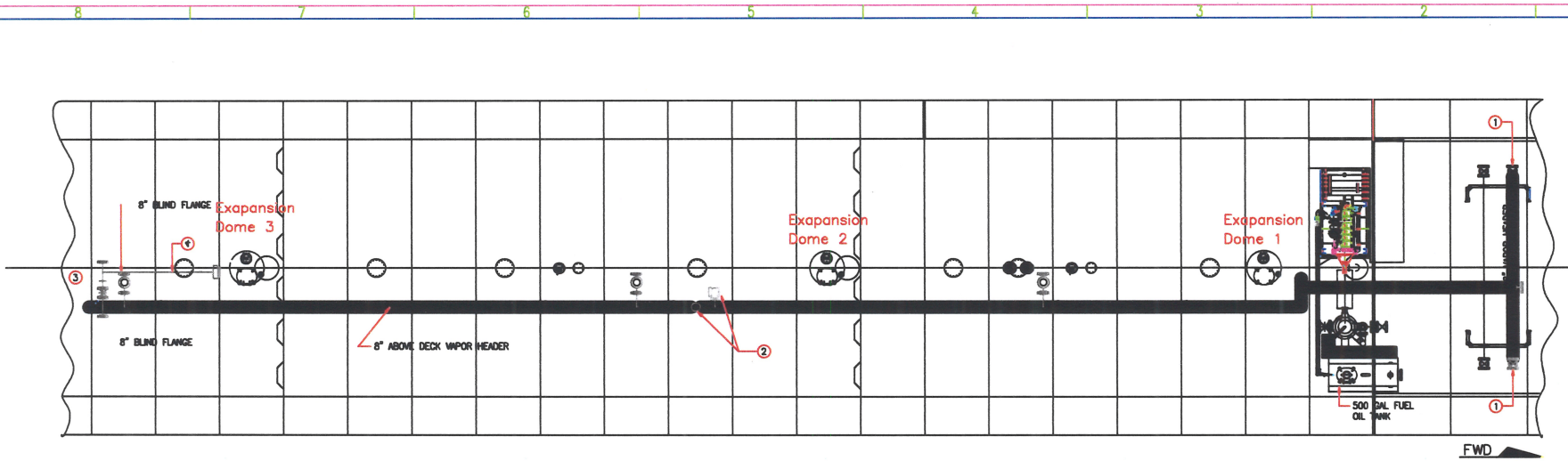
CANAL BARGE COMPANY	
NAME	HULL #
CBC 1380	9739
CBC 1381	9740
CBC 1382	9741
CBC 1383	9742
CBC 1384	9743
CBC 1385	9744
CBC 1386	9745
CBC 1387	9746
CBC 1388	9754
CBC 1388	9755

REVISIONS

WARRIOR SOLUTIONS, INC.  
 WARRIOR SOLUTIONS, INC.  
 1007-W 33rd St. # 12-102, Deerpark, Deerpark, TX 75844  
 TEL: 817-384-0288  
 FAX: 817-384-0288  
 E-MAIL: WARRIORSOLUTIONS.COM

CANAL BARGE COMPANY, INC.  
 1007-W 33rd St. # 12-102, Deerpark, Deerpark, TX 75844  
 CARGO PIPING DIAGRAM

DATE: 3/17/17  
 DRAWN BY: [Signature]  
 CHECKED BY: [Signature]  
 SCALE: 1/8" = 1'-0"



PLAN

VAPOR SYSTEM VALUES:

- 1- 8"-HEADER VALVE
- 2- 6"-BERGAN PV VALVE- SET @ 1.0# PSI / .5# VACUUM
- 3- 8" ISOLATION VALVE
- 4- VENT STACK

SPECIAL FEATURES

- 1. PRESSURE VACUUM VALVE BERGAN  
MODEL 6" KLPH  
SET AT 1.0 PRESSURE  
SET AT 0.5 PSI VACUUM

BARGE INFORMATION

YEAR BUILT: 2015  
 HULL TYPE: I  
 CARGO GRADE: A & LOWER PRODUCTS PER  
 SUBCHAPTER "D" AND LIMITED SUBCHAPTER "O"  
 PRODUCTS.

CANAL BARGE COMPANY	
NAME	HULL #
CBC 1380	9739
CBC 1381	9740
CBC 1382	9741
CBC 1383	9742
CBC 1384	9743
CBC 1385	9744
CBC 1386	9745
CBC 1387	9746

REV	DATE	DESCRIPTION	DATE	BY

**REVISIONS**

MARINE SOLUTIONS, INC.

Marine Solutions, Inc. is a professional engineering firm. Any use of our drawings or specifications for construction, etc., without our consent is prohibited. We are not responsible for any errors or omissions in our drawings or specifications, or for any consequences arising therefrom, in any other project except for those specifically prepared for such use during the term of our contract.

**MARINE SOLUTIONS, INC.**

MARSHALL, MISSISSIPPI  
 141 NEW BRIDGE MARSHALL, MISSISSIPPI 39301  
 TEL: 601-384-5588  
 FAX: 601-384-5589  
 E-MAIL: MARINESOLUTIONS@GMAIL.COM  
 WWW: MARINESOLUTIONS.COM

**CANAL BARGE COMPANY, INC.**

**200'-0" X 35'-0" X 12'-6" DOUBLE SKIN TANK BARGE  
 VAPOR PIPING DIAGRAM**

SCALE: 3/16" = 1'-0"	DATE: 05/06/15	DWG NO.
DRAWN BY: MBI	CH'D BY:	121601PL01-1
HULL NO. -	CONTRACT NO. 0	SHEET 1 OF 1
REV: 1	REV: 1	PAGE 1