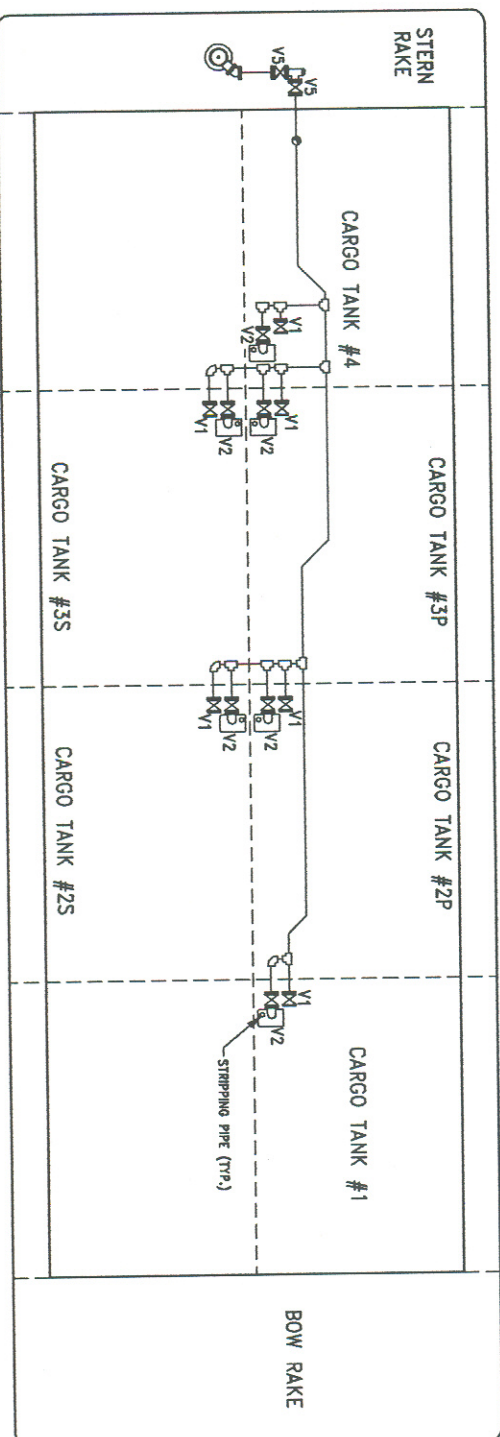


ABOVE DECK PIPING



BELOW DECK PIPING

LOAD AND DISCHARGE VALVING	
TO LOAD	TO PUMP
A. OPEN V7, #1V1, #2P V1, #2S V1, #3P V1, #3S V1, #4V1	A. OPEN #1V2, #2P V2, #2S V2, #3P V2, #3S V2, #4V2
B. OPEN V6 TO DOCK,	B. OPEN V5 AND V4 TO DOCK.
C. CLOSE V4 AND V5	C. CLOSE V7

CAPACITIES - SHORT TONS AT VARIOUS DRAFTS

DRAFT (FEET)	TOTAL S.T.	TANK NUMBERS			
		CT #1	P/S	CT #3	CT #4
2.0'	58.60	14.66	14.92	14.92	14.10
2.5'	211.20	52.83	53.79	53.79	50.80
3.0'	364.70	91.23	92.88	92.88	87.72
3.5'	519.00	129.83	132.17	132.17	124.83
4.0'	674.20	168.63	171.70	171.70	162.16
4.5'	830.10	207.64	211.40	211.40	199.66
5.0'	985.70	248.81	251.28	251.28	237.32
5.5'	1143.90	286.14	291.32	291.32	275.13
6.0'	1301.70	325.61	331.50	331.50	313.09
6.5'	1460.10	365.23	371.84	371.84	351.18
7.0'	1619.10	405.00	412.33	412.33	389.43
7.5'	1778.60	444.90	452.95	452.95	427.79
8.0'	1938.70	484.93	493.75	493.75	466.30
8.5'	2099.40	523.15	534.85	534.85	504.95
9.0'	2280.70	565.49	575.73	575.73	543.75
9.5'	2482.50	605.97	616.94	616.94	582.88
10.0'	2584.90	648.59	658.29	658.29	621.72
10.5'	2747.80	687.34	699.78	699.78	660.30
11.0'	3446.30	862.07	877.67	877.67	828.91
MAXIMUM CAPACITY - BBL (95%)					
16560.0   4142.0   4217.0   4217.0   3984.0					
MAXIMUM CAPACITY - CU. FT. (96%)					
92984.0   23257   23678   23678   22371					

BARGE INFORMATION

HULL NUMBER - TWCP 1399  
 NAME - CBC 199  
 OFFICIAL NUMBER - 9999970  
 YEAR BUILT - 1994  
 HULL TYPE - II & III  
 CARGO GRADE - A & LOWER  
 SUBCH. - O° CARGO - SOLVENTS/LIGHT CHEM.  
 GROSS TONS - 1061

BARGE SPECIAL FEATURES

- COMMON VAPOR HEADER
  - BARGE IS EQUIPPED WITH 2" STRIPPING SYSTEM.
  - BYRION JACKSON, 3 STAGE DEEPWELL PUMP
  - DETROIT DIESEL CARGO PUMP, 6-7IN WITH HYDROSTARTER.
  - P/V VALVE, 4" SE-WON HPV, 3 PSI PRESSURE - 1 PSI VACUUM.
  - ALL TANKS HAVE HEATING COILS
- VALVE IDENTIFICATION
- V1 - CARGO TANK HIGH SUCTION VALVE
  - V2 - CARGO TANK SUMP SUCTION VALVE
  - V3 - PUMP DISCHARGE CHECK VALVE
  - V4 - PUMP DISCHARGE BLOCK VALVE
  - V5 - PUMP SUCTION BLDCK VALVES
  - V6 - DISCHARGE HEADER VALVES
  - V7 - LOADING HEADER VALVES
  - V8 - VAPOR HEADER VALVES
  - V9 - PRESSURE/VACUUM VALVE
  - V10 - VAPOR BUTTERFLY VALVE



A MEMBER OF ROLLINGER SHIPYARDS, INC.

CBC 199 PIPING DIAGRAM

DESIGNED BY: BRETT WOLSKAMP	CHECKED BY: BRETT WOLSKAMP
DATE: 08/11/2010	SCALE: NOT TO SCALE
PROJECT: CBC199 PIPING	REVISION:

ORIGINAL

*Rollinger*  
 1801 ENGINEERS ROAD  
 BELLE (904) 891-2424  
 FAX: (904) 585-4618