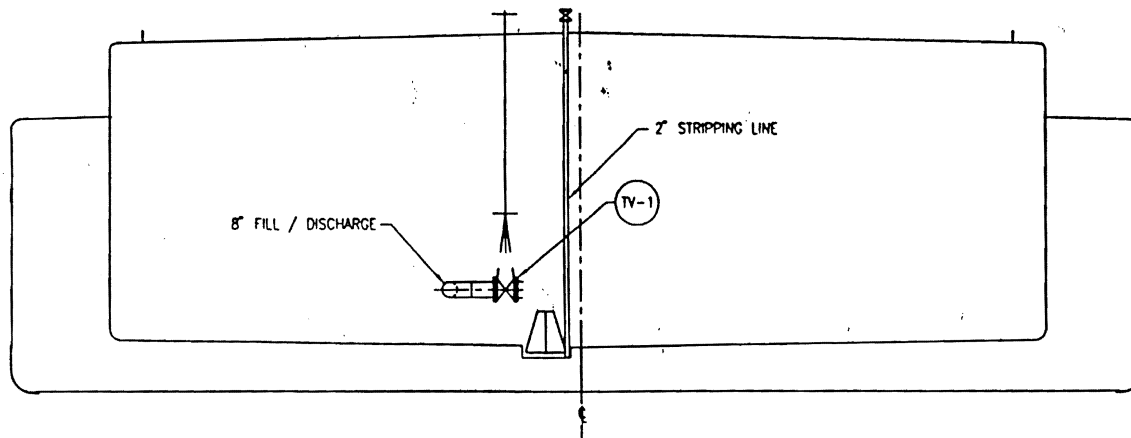


CARGO PIPING



BELOW DECK PIPING

CAPACITIES - SHORT TONS @ VARIOUS DRAFTS

DRAFT FT.	TOTAL S.T.	TANK-1 P/S S.T.	TANK-2 PORT S.T.	TANK-2 STBD S.T.	TANK-3 P/S S.T.
2'-1"	35.39	12.26	5.78	5.78	11.57
2'-6"	152.12	52.68	24.86	24.86	49.73
3'-0"	293.46	101.63	47.95	47.95	95.93
3'-6"	436.18	151.05	71.27	71.27	142.59
4'-0"	580.29	200.96	94.82	94.82	189.70
4'-6"	725.77	251.33	118.59	118.59	237.25
5'-0"	872.64	302.19	142.59	142.59	285.26
5'-6"	1,020.87	353.53	166.81	166.81	333.72
6'-0"	1,170.49	405.34	191.26	191.26	382.63
6'-6"	1,321.49	457.63	215.93	215.93	431.99
7'-0"	1,473.84	510.39	240.83	240.83	481.80
7'-6"	1,627.49	563.60	265.93	265.93	532.03
8'-0"	1,782.60	617.32	291.28	291.28	582.73
8'-6"	1,938.94	671.46	316.82	316.82	633.84
9'-0"	2,096.80	726.12	342.62	342.62	685.44
9'-6"	2,256.00	781.25	368.63	368.63	737.49
10'-0"	2,416.56	836.85	394.87	394.87	789.97
10'-6"	2,578.46	892.92	421.32	421.32	842.90
11'-0"	2,741.73	949.46	448.00	448.00	896.27

MAX. CAPACITY - BBL (FULL)

16,680.59	5,776.37	2,726.05	2,726.05	5,452.11
-----------	----------	----------	----------	----------

MAX. CAPACITY - CU. FT. (95%)

88,984.78	30,814.80	14,542.47	14,542.47	29,085.00
-----------	-----------	-----------	-----------	-----------

SPECIAL FEATURES

- 1) CARGO PUMP: 11" BYRON JACKSON
- 2) PUMP ENGINE: GM 6-71
- 3) SEGREGATED CARGO PIPING
- 4) STEAM COILS

VALVE IDENTIFICATION

- SV - SUCTION VALVE
- DV - DISCHARGE VALVE
- LV - LOAD VALVE
- TV-1 - TANK VALVE TANK # 1
- PTV-2 - TANK VALVE, TANK # 2 PORT
- STV-2 - TANK VALVE, TANK # 2 STBD
- TV-3 - TANK VALVE TANK # 3
- RV - RELIEF VALVE
- PHV - PORT HEADER VALVE
- SHV - STBD HEADER VALVE

OPERATING INSTRUCTIONS

- TO LOAD:
- OPEN: TV-1, PTV-2, STV-2, TV-3
 - OPEN: LV
 - OPEN: SHV OR PHV TO DOCK
 - CLOSE: SV
 - CLOSE: DV
- TO DISCHARGE:
- OPEN: TV-1, PTV-2, STV-2, TV-3
 - OPEN: SV
 - OPEN: DV
 - OPEN: SHV OR PHV TO DOCK
 - CLOSE: LV



CARL BARGE COMPANY, INC.
200' x 54' x 12'-6"

BARGE INFO.

HULL NO.:	CBC 224
NAME:	CBC 224
YEAR BUILT:	1999
HULL TYPE:	DOUBLE BOTTOM
CARGO GRADE:	A & LOWER

NO.:	DJ1
REV.:	1
DATE:	12/11/99
BY:	WALPH
FILE:	PIPING DIAGRAM
SCALE:	AS SHOWN
DATE:	2002-DWG