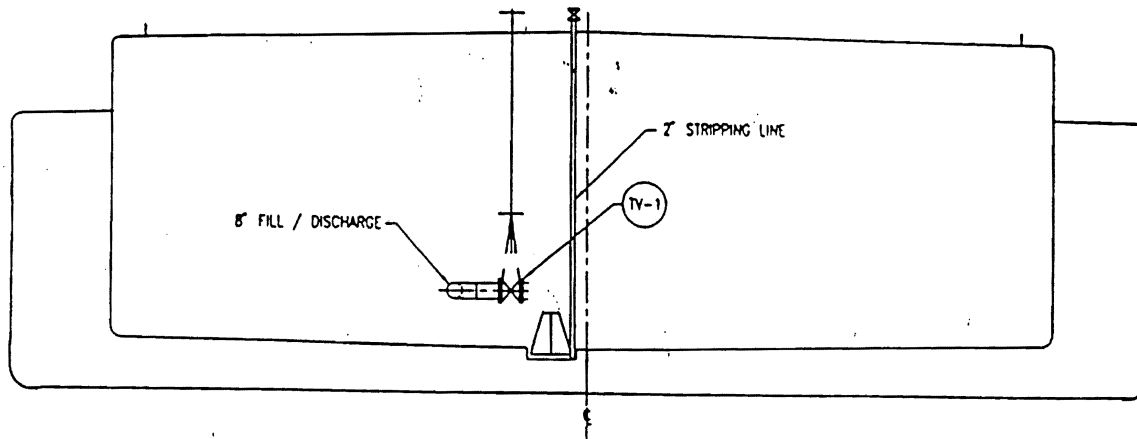


CARGO PIPING



BELOW DECK PIPING

CAPACITIES - SHORT TONS @ VARIOUS DRAFTS					
DRAFT FT.	TOTAL	TANK - 1			
	S.T.	P/S	PORT	STBD	P/S
2'-1	35.39	12.26	5.78		11.57
2'-6	152.17	52.64	24.86	24.86	49.73
3'-0	293.46	101.63	47.95	47.95	95.93
3'-6	436.18	151.05	71.27	71.27	142.59
4'-0	580.29	200.86	94.62	94.62	189.70
4'-6	725.77	251.33	118.59	118.59	237.25
5'-0	872.64	302.19	142.59	142.59	285.76
5'-6	1,020.87	353.53	166.81	166.81	333.72
6'-0	1,170.49	405.34	191.28	191.28	382.63
6'-6	1,321.49	457.63	215.83	215.83	431.99
7'-0	1,473.84	510.39	240.83	240.83	481.80
7'-6	1,627.49	563.60	265.83	265.83	532.03
8'-0	1,782.40	617.32	291.28	291.28	582.73
8'-6	1,938.54	671.46	316.82	316.82	633.84
9'-0	2,096.00	726.12	342.82	342.82	685.44
9'-6	2,254.00	781.25	368.63	368.63	737.49
10'-0	2,412.58	836.85	394.87	394.87	789.87
10'-6	2,571.66	892.92	421.32	421.32	843.90
11'-0	2,731.33	949.46	448.00	448.00	898.77

MAX. CAPACITY - BBL (FULL)
 18,680.59 | 5,778.37 | 2,778.05 | 2,778.05 | 5,452.11

MAX. CAPACITY - CU. FT. (95%)
 88,384.78 | 30,814.80 | 14,542.47 | 14,542.47 | 29,085.00

SPECIAL FEATURES

- 1) CARGO PUMP: 11" BYRON JACKSON
- 2) PUMP (ENGINE): GM 6-71
- 3) SEGREGATED CARGO PIPING
- 4) STEAM COILS

VALVE IDENTIFICATION

- SV - SUCTION VALVE
- DV - DISCHARGE VALVE
- LV - LOAD VALVE
- TV-1 - TANK VALVE TANK # 1
- PTV-2 - TANK VALVE TANK # 2 PORT
- STV-2 - TANK VALVE TANK # 2 STBD
- TV-3 - TANK VALVE TANK # 3
- RV - RELIEF VALVE
- PHV - PORT HEADER VALVE
- SHV - STBD HEADER VALVE

OPERATING INSTRUCTIONS

- TO LOAD:
- OPEN: TV-1, PTV-2, STV-2, TV-3
 - OPEN: LV
 - OPEN: SHV OR PHV TO DOCK
 - CLOSE: SV
 - CLOSE: DV
- TO DISCHARGE:
- OPEN: TV-1, PTV-2, STV-2, TV-3
 - OPEN: SV
 - OPEN: DV
 - OPEN: SHV OR PHV TO DOCK
 - CLOSE: LV



CARGO BARGE COMPANY, INC.
 207 s 34' x 17'-6"

BARGE INFO
 HULL #
 NAME: CBC 225
 YEAR BUILT: 1999
 HULL TYPE: DOUBLE BOTTOM
 CARGO GRADE: A & LOWER

NO.	CBC 225
DATE	PIPING DIAGRAM
BY	
CHECKED	