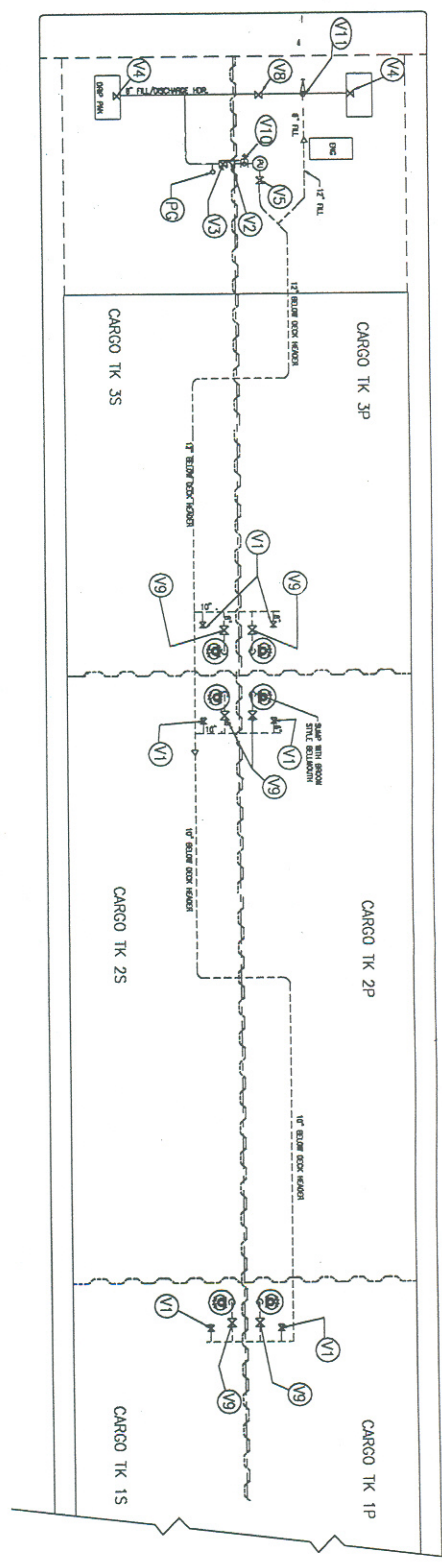


TANK VOL. 100% FULL

TANK	GAL.	EBL	CUF.T.
1P	192,321	4579	25,710
1S	192,321	4579	25,710
2P	186,978	4452	24,995
2S	186,978	4452	24,995
3P	177,013	4215	23,663
3S	177,013	4215	23,663
TOTAL	1,112,624	26,492	148,736
		98% FULL	25,982



CAPACITIES—SHORT TONS AT VARIOUS DRAFTS

DRAFT (FT)	TOTAL (S.T.)	1 P/S (S.T.)	2 P/S (S.T.)	3 P/S (S.T.)
1.00	1001.00	350.80	344.10	306.10
2.00	290.70	102.10	100.10	88.50
3.00	526.60	184.20	180.70	161.60
4.00	763.40	267.10	262.00	234.30
5.00	1001.00	350.80	344.10	306.10
6.00	1239.50	435.20	426.80	377.40
7.00	1478.80	520.30	510.40	448.00
8.00	1719.00	606.20	594.70	518.00
9.00	1960.10	693.00	679.80	587.20
10.00	2201.90	780.30	765.60	655.90
11.00	2444.70	868.60	852.20	723.90
12.00	2688.30	957.60	939.60	791.10
13.00	2932.70	1047.20	1027.60	857.90
14.00	3178.00	1137.80	1116.50	923.60
15.00	3424.20	1229.10	1206.20	988.90
16.00	3671.10	1321.10	1296.50	1053.40
17.00	3919.00	1414.00	1387.70	1117.30
18.00	4167.60	1507.60	1479.70	1180.30
19.00	4417.20	1602.00	1572.50	1242.70
20.00	4667.50	1697.20	1666.10	1304.20

MAX. CAPACITY - 98L (100 %)

26,644.72	9688.57	9511.40	7445.11
MAX. CAPACITY - CU. FT. (100 %)			
149,599.36	154,397.44	53,400.64	41,801.28

VALVE IDENTIFICATION CHART

V1	HIGH LOADING VALVE
V2	PUMP DISCHARGE CHECK VALVE
V3	PUMP HEADER VALVE
V4	CARGO HEADER VALVE
V5	PUMPWELL INLET VALVE
V8	CARGO HDR BLOCK VALVE
V9	CARGO TANK SUCTION VALVE
V10	CARGO PRESS. RELIEF VALVE
V11	CARGO HDR LOADING VALVE
PG	PRESS GAUGE

SPECIAL FEATURES

- CARGO PUMP : BRYAN JACKSON
MODEL 12LS16GHC
AMARILLO GEAR 1:1- RATIO
2800 GPM, 237' TDH
@ 207 H.P.
- CARGO PUMP ENGINE: DETROIT DIESEL
MODEL 8V-71 NA

BARGE INFORMATION

HULL NO. 4329
NAME : CBC 331
OFFICIAL NO.: 01075/788
YEAR BUILT: 1999
HULL TYPE: II
CARGO GRADE A & LOWER
SUBCHAPTER "D" PRODUCTS

THRENTY MARINE PRODUCTS, INC.
THRENTY MARINE PRODUCTS, INC.
CANAL BARGE COMPANY, INC.
SERV. OF X-84-OF 2 LET-OF DOMESTIC BARGE TRADE MARKS

SCHEM. DATE	DATE	BY	CHKD BY	REV.
02/21/78	02/21/78	P-1	SM 11/01	0
DESIGNER	DRAWN	CHECKED	APPROVED	SCALE
SM 11/01	SM 11/01	SM 11/01	SM 11/01	1:1
HULL NO. 4329	SHIP DOCK			

TO LOAD
OPEN: V1, V9, V11
CLOSE: V5 AND V3
OPEN: V4 TO DOCK

TO PUMP
OPEN: V9, V5 AND V3
CLOSE: V11
OPEN: V4 TO DOCK
OPEN: V8 IF NECESSARY

TO LOAD
OPEN: V1, V9, V11
CLOSE: V5 AND V3
OPEN: V4 TO DOCK

TO PUMP
OPEN: V9, V5 AND V3
CLOSE: V11
OPEN: V4 TO DOCK
OPEN: V8 IF NECESSARY

TO LOAD
OPEN: V1, V9, V11
CLOSE: V5 AND V3
OPEN: V4 TO DOCK