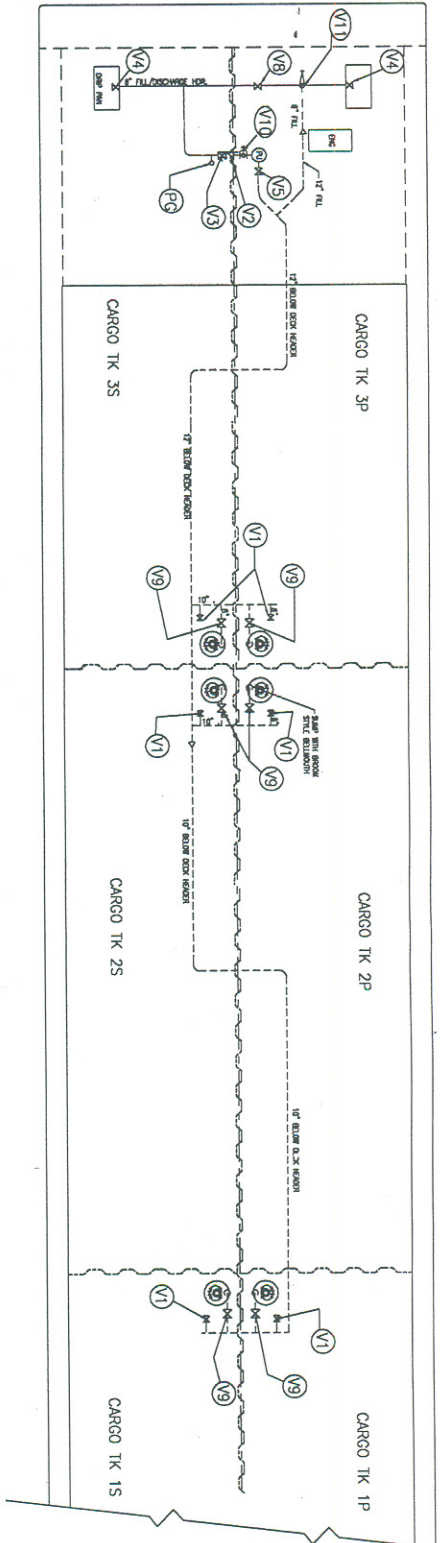


TANK VOL. 100% FULL

TANK	GAL.	BBL	CU.FT.
1P	191,600	4562	25,613
1S	191,600	4562	25,613
2P	186,939	4451	24,990
2S	186,939	4451	24,990
3P	177,333	4223	23,711
3S	177,333	4223	23,711
TOTAL	1,111,824	26,472	148,628
		98% FULL	
		25,943	



CAPACITIES—SHORT TONS AT VARIOUS DRAFTS

DRAFT (FT)	TOTAL (S.T.)	1 P/S (S.T.)	2 P/S (S.T.)	3 P/S (S.T.)
2.00	55.80	20.80	20.40	14.50
2.50	290.70	102.10	100.10	88.50
3.00	526.60	184.20	180.70	161.60
3.50	763.40	267.10	262.00	234.30
4.00	1001.00	350.80	344.10	306.10
4.50	1239.50	435.20	426.90	377.40
5.00	1478.80	520.30	510.40	448.00
5.50	1719.00	606.20	594.70	518.00
6.00	1960.10	693.00	679.80	587.20
6.50	2201.90	780.30	765.60	655.90
7.00	2444.70	868.60	852.20	723.90
7.50	2688.30	957.60	939.60	791.10
8.00	2932.70	1047.20	1027.60	857.90
8.50	3178.00	1137.80	1116.50	923.60
9.00	3424.20	1229.10	1206.20	988.90
9.50	3671.10	1321.10	1296.50	1053.40
10.00	3919.00	1414.00	1387.70	1117.30
10.50	4167.60	1507.60	1479.70	1180.30
11.00	4417.20	1602.00	1572.50	1242.70
11.50	4667.50	1697.20	1666.10	1304.20

MAX. CAPACITY — BBL (100 % )

26,644.72	9888.57	9511.40	7445.11
MAX. CAPACITY — CU. FT. (100 % )			
149,399.36	54,397.44	53,400.64	41,801.28

VALVE IDENTIFICATION CHART

- V1 HIGH LOADING VALVE
- V2 PUMP DISCHARGE CHECK VALVE
- V3 PUMP DISCHARGE VALVE
- V4 CARGO HEADER VALVE
- V5 PUMPWELL INLET VALVE
- V6 CARGO HDR BLOCK VALVE
- V7 CARGO TANK SUCTION VALVE
- V8 CARGO PRESS. RELIEF VALVE
- V9 CARGO HDR LOADING VALVE
- V10 CARGO HDR LOADING VALVE
- V11 PRESS GLUGE

SPECIAL FEATURES

1. CARGO PUMP : BRYAN JACKSON  
MODEL 12LS16GHC  
AMARILLO GEAR 1:1 RATIO  
2800 GPM, 237" TDH  
@ 207 H.P.
2. CARGO PUMP ENGINE: DETROIT DIESEL  
MODEL 8V-71 NA

BARGE INFORMATION

HULL NO. 4330  
NAME : CBC 332  
OFFICIAL NO.: D10757899  
YEAR BUILT: 1999  
HULL TYPE: II  
CARGO GRADE A & LOWER  
SUBCHARTER "D" PRODUCTS

THIRTY MARINE PRODUCTS, INC.  
THIRTY MARINE PRODUCTS, INC.  
CANAL BARGE COMPANY, INC.  
CARGO PIPING SYSTEM DIAGRAM

SCALE: N.T.S.  
DRAWN BY: JES  
CHECKED BY: JES  
DATE: 02/21/78  
REV. 1 OF 1

DATE: 02/21/78  
REV. 0

TO LOAD

OPEN: V1,V9,V11  
CLOSE: V5 AND V3  
OPEN: V4 TO DOCK

TO PUMP

OPEN: V9,V5 AND V3  
CLOSE: V11  
OPEN: V4 TO DOCK  
OPEN: V8 IF NECESSARY