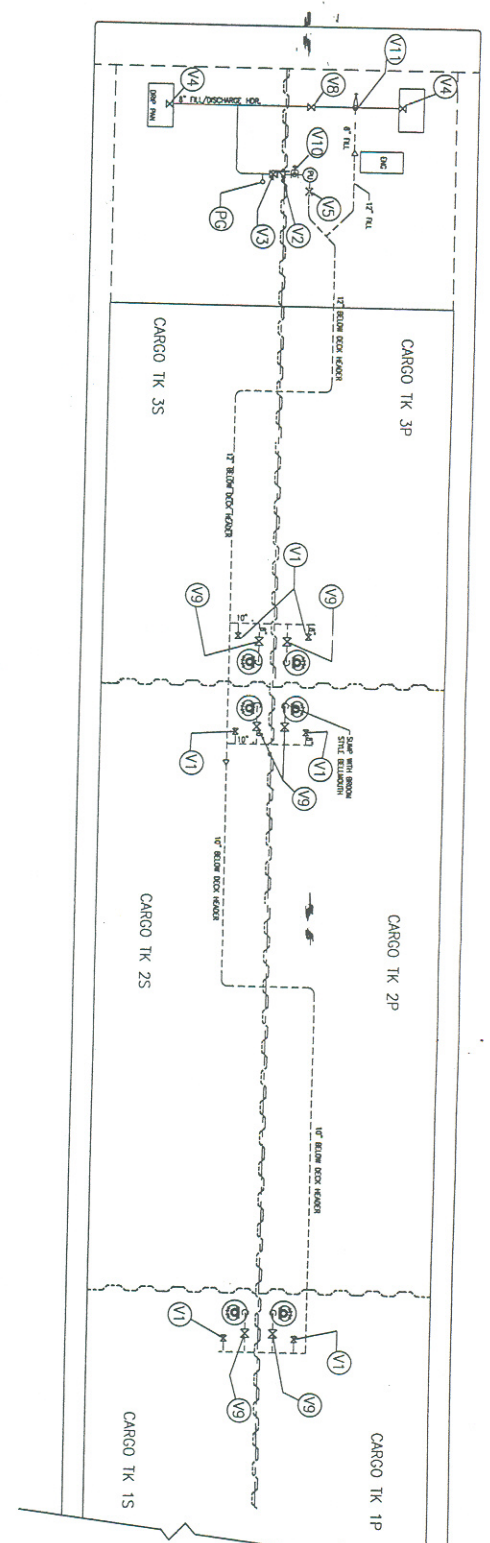


TANK VOL. 100% FULL



TANK	GAL.	BBL.	CU.FT.
1P	206,612	4919	27,620
1S	206,612	4919	27,620
2P	205,449	4892	27,465
2S	205,449	4892	27,465
3P	190,593	4538	25,479
3S	190,593	4538	25,479
TOTAL	1,205,308	28,698	161,128
		98% FULL	28,124

CAPACITIES - SHORT TONS AT VARIOUS DRAFTS

DRAFT (FT)	TOTAL (S.T.)	1 P/S (S.T.)	2 P/S (S.T.)	3 P/S (S.T.)
2.00	98.20	49.10	49.10	0
2.50	348.80	136.40	136.40	76.00
3.00	599.30	219.90	219.90	159.50
3.50	849.90	303.40	303.40	243.10
4.00	1100.50	386.90	386.90	326.60
4.50	1351.20	470.50	470.50	410.20
5.00	1601.80	554.00	554.00	493.70
5.50	1852.50	637.60	637.60	577.30
6.00	2103.30	721.20	721.20	660.90
6.50	2354.00	804.80	804.80	744.40
7.00	2604.80	888.40	888.40	828.00
7.50	2855.60	972.00	972.00	911.60
8.00	3106.40	1055.60	1055.60	995.20
8.50	3357.20	1139.20	1139.20	1078.80
9.00	3608.00	1222.80	1222.80	1162.40
9.50	3859.00	1306.40	1306.40	1246.10
10.00	4109.80	1390.00	1390.00	1329.70
10.50	4360.70	1473.70	1473.70	1413.30
11.00	4611.60	1557.30	1557.30	1497.00
11.50	4862.50	1640.90	1640.90	1580.60
MAX. CAPACITY - BBL (100 %)				
27.758.00	9367.00	9367.00	19023.00	
MAX. CAPACITY - CU. FT. (100 %)				
155,849.36	52,593.00	52,593.00	50,660.00	

**RECEIVED**  
 JUL - 7 1999  
 BARGE MAINTENANCE

**VALVE IDENTIFICATION CHART**

- V1 HIGH LOADING VALVE
- V2 PUMP DISCHARGE CHECK VALVE
- V3 PUMP DISCHARGE VALVE
- V4 CARGO HEADER VALVE
- V5 PUMPELL INLET VALVE
- V6 CARGO HDR BLOCK VALVE
- V7 CARGO TANK SUCTION VALVE
- V8 CARGO PRESS. RELIEF VALVE
- V9 CARGO HDR LOADING VALVE
- V10 CARGO PRESS. RELIEF VALVE
- V11 CARGO HDR LOADING VALVE
- P6 PRESS GUAGE

**SPECIAL FEATURES**

1. CARGO PUMP : BRYAN JACKSON  
 MODEL 121S16GHC  
 AMARILLO GEAR 1:1 RATIO  
 2800 RPM, 237' TDH  
 @ 207 H.P.
2. CARGO PUMP ENGINE: DETROIT DIESEL  
 MODEL 8V-71 NA

**BARGE INFORMATION**

HULL NO. 4334  
 NAME : CBC 334  
 OFFICAL NO.: D1075923  
 YEAR BUILT: 1999  
 HULL TYPE: II  
 CARGO GRADE A & LOWER  
 SUBCHAPTER "D" PRODUCTS

**THORITY MARINE PRODUCTS, INC.**

3800 W. 12th St., Suite 200  
 CANAL EANGE COMPANY, INC.  
 877-473-8474

**CARGO PIPING SYSTEM DIAGRAM**

SCALE: N.T.S.	DATE: 05/13/99	DWG. NO.:
OWNER: B.C. D.S.	CD: EN. G.B.	PROJECT EN. CD
YARD: ISLAND CITY	DWG. NO. 50203	REV. 1
HULL NO. 4334	SHIP ORDER	REV. 0

**TO LOAD**

OPEN: V1, V9, V11  
 CLOSE: V5 AND V3  
 OPEN: V4 TO DOCK

**TO PUMP**

OPEN: V9, V5 AND V3  
 CLOSE: V11  
 OPEN: V4 TO DOCK  
 OPEN: V8 IF NECESSARY