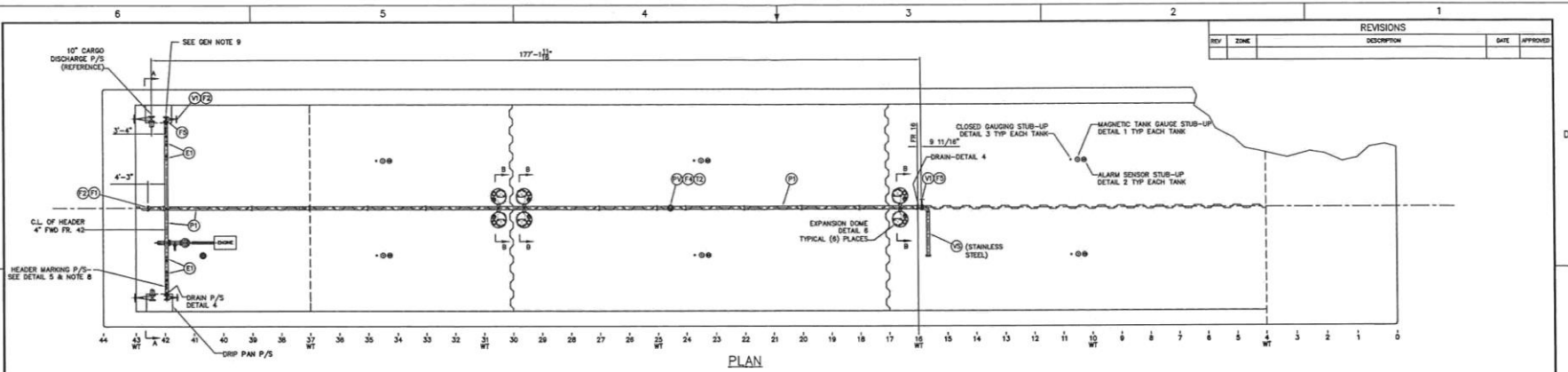
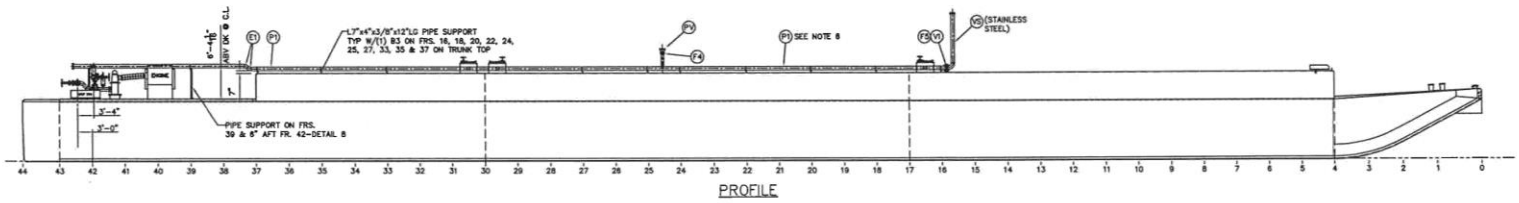


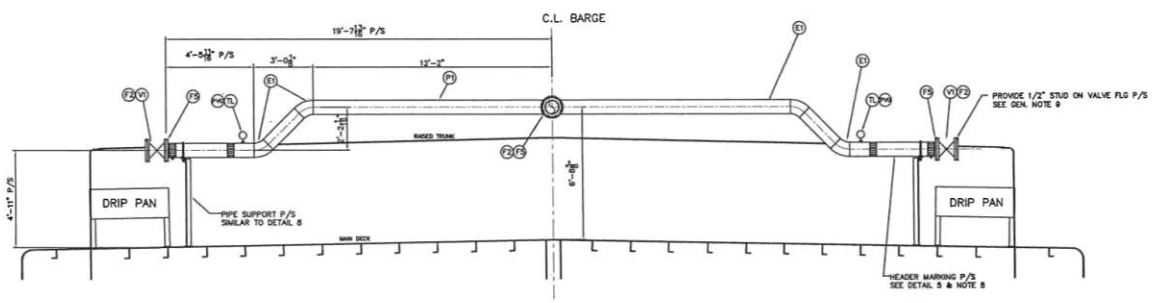
REVISIONS		
REV	ZONE	DESCRIPTION



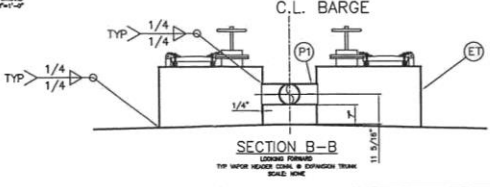
PLAN



PROFILE



SECTION A-A



SECTION B-B

GENERAL NOTES:

- VAPOR PIPING IS CLASS II, MAMP IS 135PSI AND TEMP LESS THAN 100F. CARBO MAMP IS 100 PSI. CARBO PUMP RELIEF VALVE SET AT 135 PSI.
- MAXIMUM DESIGN WORKING PRESSURE OF THE CARBO TANKS IS 3 PSI.
- P/V VALVE IS A 8\"/>

CBC 369 & CBC 370

THE DOCUMENT AND ALL APPLICABLE DRAWINGS HEREBY ARE THE PROPERTY OF CONRAD SHIPYARD, L.L.C. THESE DRAWINGS ARE TO BE KEPT IN THE ORIGINAL FILED HEREIN AND NOT REPRODUCED OR TRANSMITTED IN ANY FORM OR BY ANY MEANS, ELECTRONIC OR MECHANICAL, INCLUDING PHOTOCOPYING, RECORDING, OR BY ANY INFORMATION STORAGE AND RETRIEVAL SYSTEM.

CONRAD Shipyard, L.L.C.

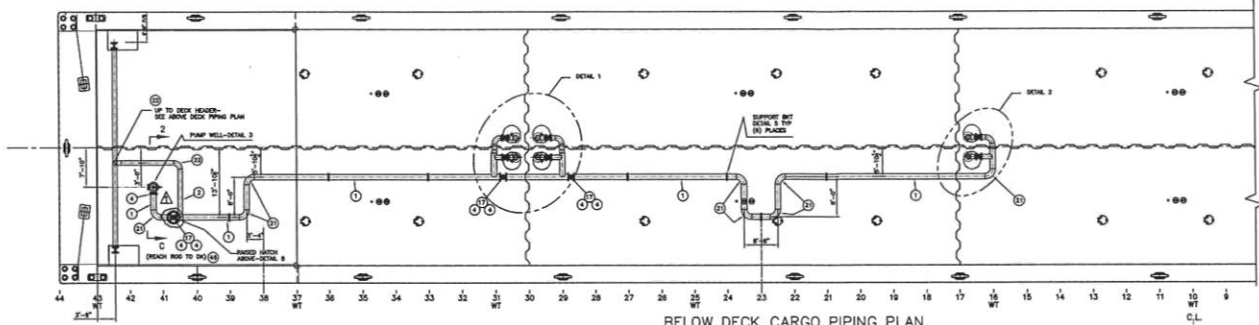
297'-6\"/>

VAPOR CONTROL PIPING

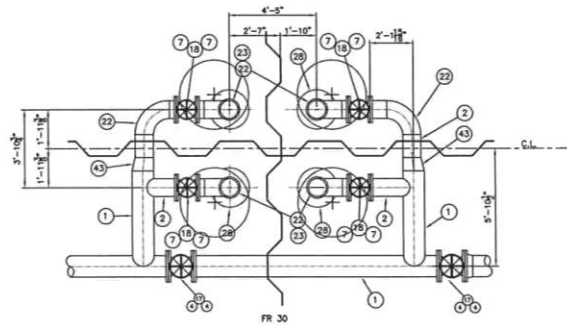
DATE: 03/15/2011
 DRAWN BY: JTB
 CHECKED BY: JTB
 PROJECT NO.: 297-03
 SHEET NO.: 0
 SCALE: 1\"/>

REV		ZONE	DESCRIPTION	DATE	APPROVED

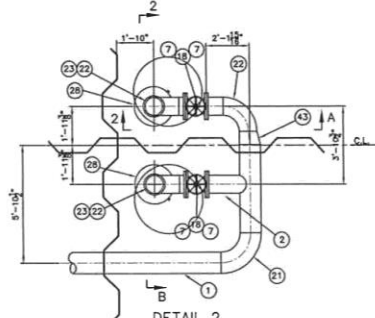
REVISIONS



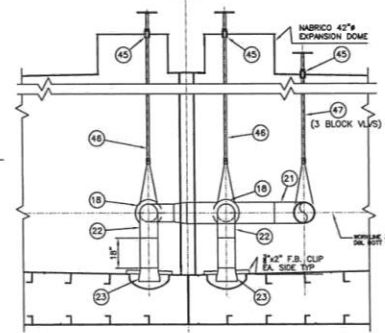
BELOW DECK CARGO PIPING PLAN



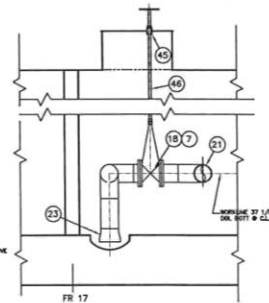
DETAIL 1
PLAN OF TANKS #2 P/S & 3 P/S
SCALE: 3/8"=1'-0"



DETAIL 2
PLAN OF TANKS #1 P/S
SCALE: 3/8"=1'-0"



SECTION 2-B
TIP SECTION OF SUCTION WELLS
LOOKING FORWARD
SCALE: 3/8"=1'-0"



SECTION 2-A
CARGO LINE ELEVATION LKGD OUTBOARD
TANK NO. 1P SHOWN-OTHER TANKS SIMILAR
SEE DETAILS 1 & 2 FOR LOCATIONS & ORIENTATION
SCALE: 3/8"=1'-0"

GENERAL NOTES:

1. ALL PIPING SHALL MEET CURRENT USCG REQUIREMENTS FOR CLASS B PIPING SYSTEMS.
2. BACKING RINGS SHALL BE USED AT BUTT WELD JOINTS 2" AND LARGER.
3. PIPES PASSING THROUGH WATER/OIL TIGHT BOUNDARIES SHALL BE WELDED DOUBLE CONTINUOUS.
4. CARGO SYSTEM:
 - PRESSURE: WORKING 100 PSI
 - DESIGN 150 PSI
 - TEST 225 PSI
 - RELIEF VALVE 125 PSI
5. LABELS SHALL BE INSTALLED ON ALL VALVES WHERE REQUIRED TO IDENTIFY SERVICE.
6. ALL STRUCTURAL STEEL IS ASTM A36.
7. ALL HATCHES, MANHOLES, STUFFING GLANDS, ETC. ON THE RATED TRUNK WITH OPENINGS INTO THE CARGO TANKS SHALL BE FITTED WITH TIGHTEN GASKETS. ALL HATCHES, MANHOLES, ETC. THAT OPEN INTO VOIDS OUTSIDE OF THE CARGO AREA SHALL BE FITTED WITH NEOPRENE GASKETS.
8. CARGO PUMP ENGINE IS A CHAMBERS MODEL 8218A-2000A RATED 270HP @ 1800RPM, IMHO, US EPA TIER II COMPLIANT, CLASS I, DIVISION I COMPLIANT.
9. CARGO PUMP IS A BIRON JACKSON MODEL 2121212121212121 3 STAGE, RATED FOR 4200 BBL/H @ 105 PSI, COMPLETE WITH AN ANAROLLO 2550 RIGHT ANGLE DRIVE W/7:1 RATIO AND DANIA SL710 x 40" L/D. DRIVE SHAFT AND REDUCIBLE GASKET.

CBC 369 & CBC 370



THE DRAWING AND ALL INFORMATION CONTAINED HEREIN ARE THE PROPERTY OF CONRAD SHIPYARD, L.L.C. © 2016 CONRAD SHIPYARD, L.L.C. ALL RIGHTS RESERVED. NO PART OF THIS DRAWING OR INFORMATION CONTAINED HEREIN IS TO BE REPRODUCED OR TRANSMITTED IN ANY FORM OR BY ANY MEANS, ELECTRONIC OR MECHANICAL, INCLUDING PHOTOCOPYING, RECORDING, OR BY ANY INFORMATION STORAGE AND RETRIEVAL SYSTEM.

297'-0" x 54' x 12'-0" DOUBLE SKIN TANK BARGE

NO.	QTY	SIZE	DESCRIPTION	MATERIAL	ASTM SPEC	AND SPEC	REMARKS
38	3	6"	ELBOW, 90° L.A.R.M., SCH 40 BLK	STEEL	A-334	BLK B	
39	1	4"	FLANGE, 150# R.F.S.S.	FORGED STEEL	A-105	BLK B	
40	1	10"	ELBOW, 90° L.A.R.M., SCH 40 BLK	STEEL	A-334	BLK B	
41	8	2 1/2" DIA.	DOM-ELIPTICAL DOMED TANK HEAD x 3/8" THICK	STEEL	A-36	TANK HEAD	
42	10	1/2" DIA. 1/2"	BLK HEX HEAD W/5/8 HEX NUT EACH	ST. STEEL	TYPE 304	BLK B.1	RATED TRUNK FOR 12" BLOCK VALVE
43	8	3/8"x1/2"	BLK HEX HEAD W/5/8 HEX NUT EACH	ST. STEEL	TYPE 304	BLK B.1	4" RELIEF VALVE FLANGE
44	1	4"	RING GASKET, 150# 1/2" THICK, NON-ASBESTOS, KUNDFORS OR EQUAL	CARBON STL	A-214	BLK B	
45	1	10"	CHECK VALVE, WATER TIGHT, TONG CARBON STEEL BODY/2 1/2" S.S. TRIM, REVERSE-FLOW OR EQUAL	CARBON STL	A-334	BLK B	
46	8	1 1/2"x1/2"	CONG. REDUCER, B.W. SCH 40 BLK	STEEL	A-334	BLK B	
47	10	10"	ELBOW, 90° L.A. B.W., SCH 40 BLK	STEEL	A-334	BLK B	
48	8	10"	ELBOW, 90° L.A. B.W., SCH 40 BLK	STEEL	A-334	BLK B	
49	1	4"x4"	RELIEF VALVE SET @ 125 PSI, STEEL/NEOPRENE GASKETS, OR EQUAL	CARBON STL	A-214	BLK B	
50	4	10"	VALVE GATE, 150# FULL, 1/2" S.S. BODY, ORIS TRIM, SPACE PROVIDE	CARBON STL	A-214 OR WCB	BLK B	
51	8	10"	VALVE GATE, 150# FULL, 1/2" S.S. BODY, ORIS TRIM, SPACE PROVIDE	CARBON STL	A-214 OR WCB	BLK B	
52	2	10"	VALVE GATE, 150# FULL, 1/2" S.S. BODY, ORIS TRIM, SPACE PROVIDE	CARBON STL	A-214 OR WCB	BLK B	
53	1	2"x2"x1/2"	BLK HEX HEAD W/5/8 HEX NUT EACH	ST. STEEL	TYPE 304	BLK B.1	4" FLG ON RELIEF VALVE
54	140	7/8"x3/4"	BLK HEX HEAD W/5/8 HEX NUT EACH	ST. STEEL	TYPE 304	BLK B.1	FOR 12" FLANGES/VALVES
55	1	4"	RING GASKET, 150# 1/2" THICK, NON-ASBESTOS, GARLOCK OR EQUAL	FORGED STEEL	A-105	BLK B	
56	1	4"	RING GASKET, 150# 1/2" THICK, NON-ASBESTOS, GARLOCK OR EQUAL	FORGED STEEL	A-105	BLK B	
57	20	10"	RING GASKET, 150# 1/2" THICK, NON-ASBESTOS, GARLOCK OR EQUAL	FORGED STEEL	A-105	BLK B	
58	1	10"	RING GASKET, 150# 1/2" THICK, NON-ASBESTOS, GARLOCK OR EQUAL	FORGED STEEL	A-105	BLK B	
59	1	6"	FLANGE, 150# R.F.S.S.	FORGED STEEL	A-105	BLK B	
60	3	10"	FLANGE, 150# R.F.S.S.	FORGED STEEL	A-105	BLK B	
61	1	12" DIA. 1/2"	BLK HEX HEAD W/5/8 HEX NUT EACH	ST. STEEL	TYPE 304	BLK B.1	FOR 12" WATER DECK VALVE
62	1	10"	FLANGE, 150# R.F.S.S.	FORGED STEEL	A-105	BLK B	
63	1	10"	FLANGE, 150# R.F.S.S.	FORGED STEEL	A-105	BLK B	
64	1	10"	FLANGE, 150# R.F.S.S.	FORGED STEEL	A-105	BLK B	
65	1	10"	FLANGE, 150# R.F.S.S.	FORGED STEEL	A-105	BLK B	
66	1	10"	FLANGE, 150# R.F.S.S.	FORGED STEEL	A-105	BLK B	
67	1	10"	FLANGE, 150# R.F.S.S.	FORGED STEEL	A-105	BLK B	
68	1	10"	FLANGE, 150# R.F.S.S.	FORGED STEEL	A-105	BLK B	
69	1	10"	FLANGE, 150# R.F.S.S.	FORGED STEEL	A-105	BLK B	
70	1	10"	FLANGE, 150# R.F.S.S.	FORGED STEEL	A-105	BLK B	
71	1	10"	FLANGE, 150# R.F.S.S.	FORGED STEEL	A-105	BLK B	
72	1	10"	FLANGE, 150# R.F.S.S.	FORGED STEEL	A-105	BLK B	
73	1	10"	FLANGE, 150# R.F.S.S.	FORGED STEEL	A-105	BLK B	
74	1	10"	FLANGE, 150# R.F.S.S.	FORGED STEEL	A-105	BLK B	
75	1	10"	FLANGE, 150# R.F.S.S.	FORGED STEEL	A-105	BLK B	
76	1	10"	FLANGE, 150# R.F.S.S.	FORGED STEEL	A-105	BLK B	
77	1	10"	FLANGE, 150# R.F.S.S.	FORGED STEEL	A-105	BLK B	
78	1	10"	FLANGE, 150# R.F.S.S.	FORGED STEEL	A-105	BLK B	
79	1	10"	FLANGE, 150# R.F.S.S.	FORGED STEEL	A-105	BLK B	
80	1	10"	FLANGE, 150# R.F.S.S.	FORGED STEEL	A-105	BLK B	
81	1	10"	FLANGE, 150# R.F.S.S.	FORGED STEEL	A-105	BLK B	
82	1	10"	FLANGE, 150# R.F.S.S.	FORGED STEEL	A-105	BLK B	
83	1	10"	FLANGE, 150# R.F.S.S.	FORGED STEEL	A-105	BLK B	
84	1	10"	FLANGE, 150# R.F.S.S.	FORGED STEEL	A-105	BLK B	
85	1	10"	FLANGE, 150# R.F.S.S.	FORGED STEEL	A-105	BLK B	
86	1	10"	FLANGE, 150# R.F.S.S.	FORGED STEEL	A-105	BLK B	
87	1	10"	FLANGE, 150# R.F.S.S.	FORGED STEEL	A-105	BLK B	
88	1	10"	FLANGE, 150# R.F.S.S.	FORGED STEEL	A-105	BLK B	
89	1	10"	FLANGE, 150# R.F.S.S.	FORGED STEEL	A-105	BLK B	
90	1	10"	FLANGE, 150# R.F.S.S.	FORGED STEEL	A-105	BLK B	
91	1	10"	FLANGE, 150# R.F.S.S.	FORGED STEEL	A-105	BLK B	
92	1	10"	FLANGE, 150# R.F.S.S.	FORGED STEEL	A-105	BLK B	
93	1	10"	FLANGE, 150# R.F.S.S.	FORGED STEEL	A-105	BLK B	
94	1	10"	FLANGE, 150# R.F.S.S.	FORGED STEEL	A-105	BLK B	
95	1	10"	FLANGE, 150# R.F.S.S.	FORGED STEEL	A-105	BLK B	
96	1	10"	FLANGE, 150# R.F.S.S.	FORGED STEEL	A-105	BLK B	
97	1	10"	FLANGE, 150# R.F.S.S.	FORGED STEEL	A-105	BLK B	
98	1	10"	FLANGE, 150# R.F.S.S.	FORGED STEEL	A-105	BLK B	
99	1	10"	FLANGE, 150# R.F.S.S.	FORGED STEEL	A-105	BLK B	
100	1	10"	FLANGE, 150# R.F.S.S.	FORGED STEEL	A-105	BLK B	

BILL OF MATERIAL

BILL OF MATERIAL