

**LEGEND**

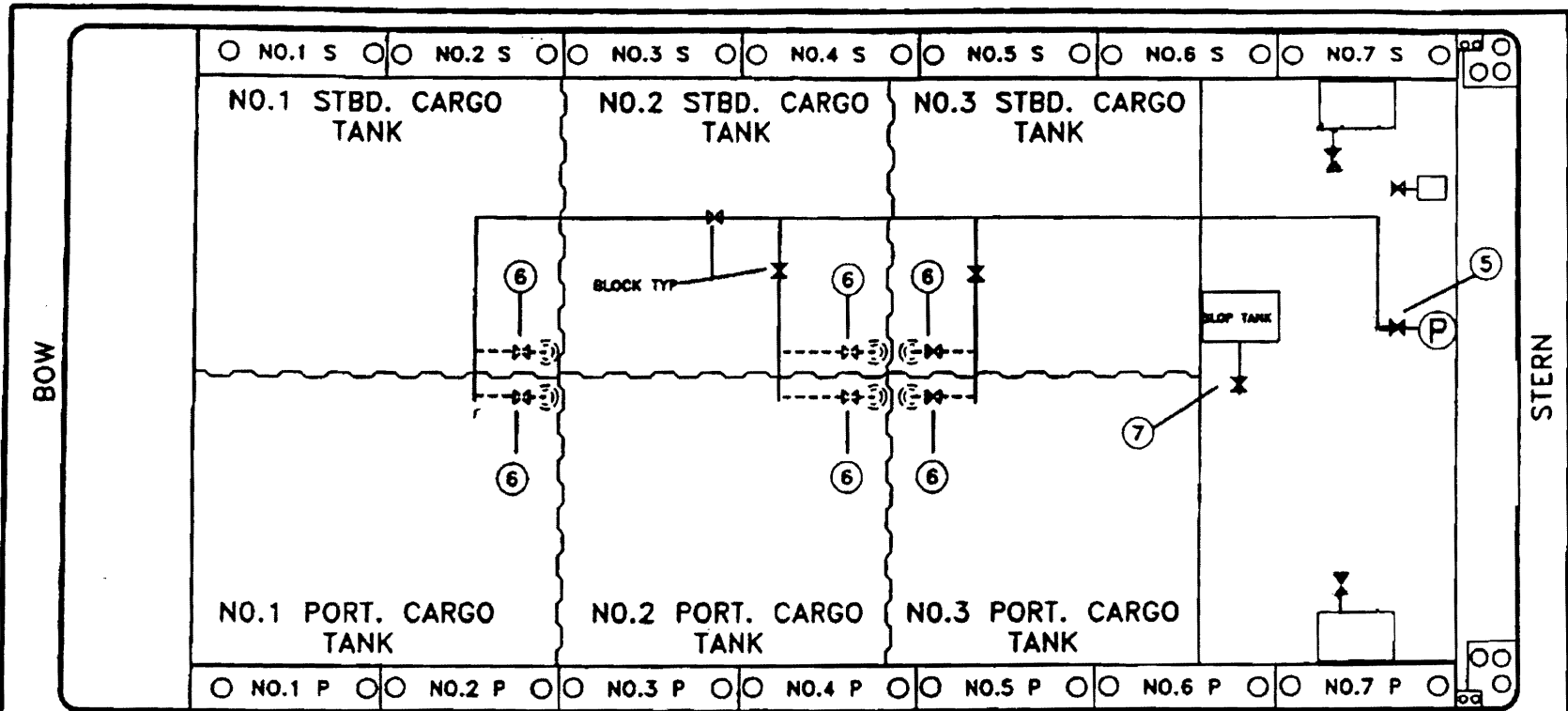
- |    |                |
|----|----------------|
| NO | DESCRIPTION    |
| 1  | CARGO HEADER   |
| 2  | CARGO PUMP     |
| 3  | PUMP SUCTION   |
| 4  | PUMP DISCHARGE |
| 5  | 1 1/4" BY-PASS |
| 6  | 10" SUCTION    |

DEADWEIGHT TABLE	
DRAFT:	TONS:
7' 0"	1,905
7' 6"	2,092
8' 0"	2,281
8' 6"	2,470
9' 0"	2,661
9' 6"	2,854
10' 0"	3,047
10' 6"	3,242
11' 0"	3,438
11' 6"	3,635
12' 0"	3,834
12' 6"	4,034
13' 0"	4,235

**CARGO PIPING  
DIAGRAM**

**CBC 406**

Effective Date:	Revision No.	Page
11/12/07	0	1 of 3



BOW

STERN

**LEGEND**

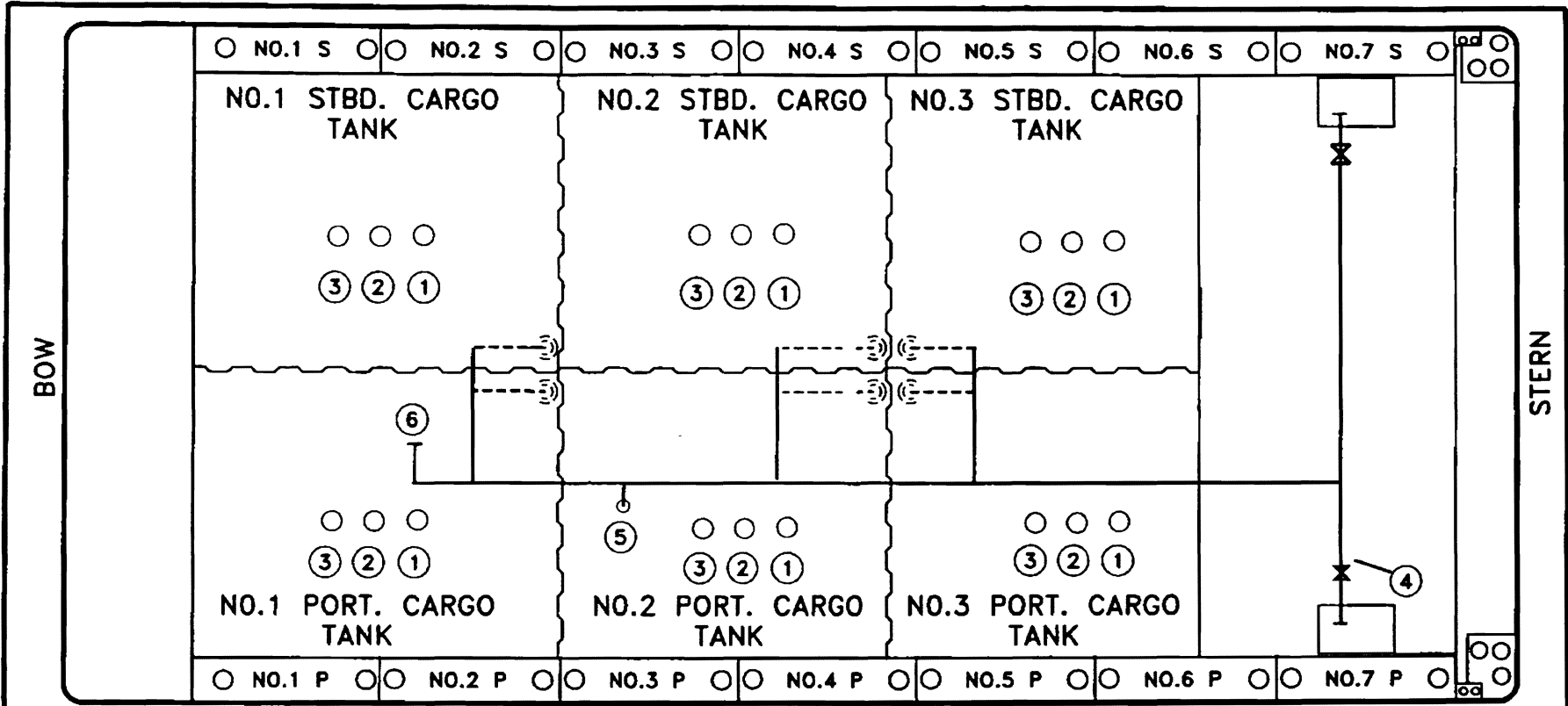
- |    |                          |
|----|--------------------------|
| NO | DESCRIPTION              |
| 5  | PUMPWELL STRIPPING VALVE |
| 6  | 2 1/2" SUCTION           |
| 7  | SLOP TANK BLOCK VALVE    |

DEADWEIGHT TABLE	
DRAFT:	TONS:
7' 0"	1,806
7' 6"	2,092
8' 0"	2,281
8' 6"	2,470
9' 0"	2,661
9' 6"	2,854
10' 0"	3,047
10' 6"	3,242
11' 0"	3,438
11' 6"	3,635
12' 0"	3,834
12' 6"	4,034
13' 0"	4,235

**STRIPPING  
DIAGRAM**

**CBC 406**

Effective Date:	Revision No.	Page
11/14/07	0	2 of 3



**LEGEND**

- |    |                      |
|----|----------------------|
| NO | DESCRIPTION          |
| 1  | HIGH LEVEL ALARM     |
| 2  | HERMETIC GAUGE POINT |
| 3  | 1 METER STICK        |
| 4  | 8" VAPOR HEADER      |
| 5  | P/V VALVE            |
| 6  | VAPOR STACK          |

DEADWEIGHT TABLE	
DRAFT:	TONS:
7' 0"	1,905
7' 6"	2,092
8' 0"	2,281
8' 6"	2,470
9' 0"	2,661
9' 6"	2,854
10' 0"	3,047
10' 6"	3,242
11' 0"	3,438
11' 6"	3,635
12' 0"	3,834
12' 6"	4,034
13' 0"	4,235

**VAPOR PIPING, GAUGING  
AND OVERFILL  
PROTECTION**

**CBC 406**

Effective Date:	Revision No.	Page
11/12/07	0	3 of 3