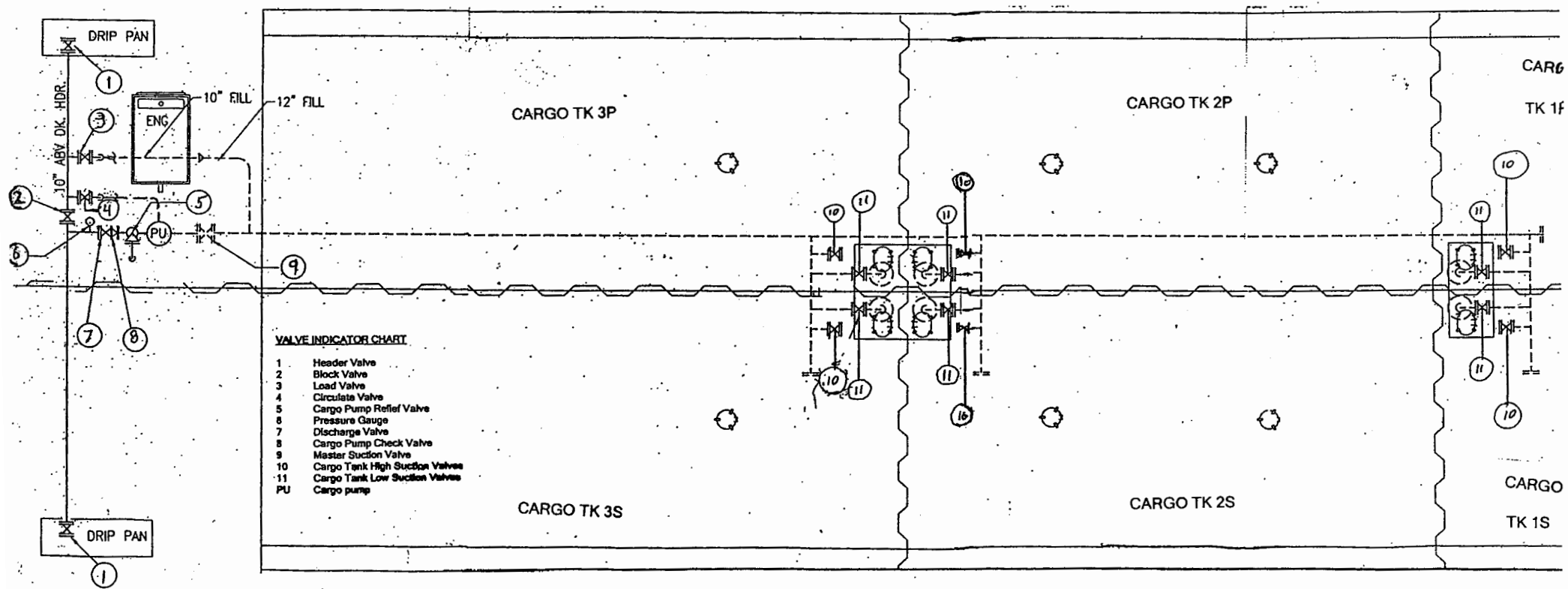


Revised & Verified
 6/1/2012
 (Signature)

CBC 7029



REVISION HISTORY

REV	ZONE	DESCRIPTION	DATE	BY	CHECK
0	-	Initial Release	14-Mar-23	CTS	-

GENERAL NOTES

-

NO.	DRAWING	TITLE	REV
-	-	-	-

REFERENCES

TITLE:		Draft Tables	
FOR:		Canal Barge	
VESSEL:	Canal Barge	HULL NO:	980402
DATE:	14-Mar-23	SCALE:	N.T.S.
DWG. NO:	0014-058-005	REV:	0
DRAWN BY:	CTS	CHECK BY:	-



THIS DOCUMENT IS THE EXCLUSIVE PROPERTY OF BHGI AND IS FURNISHED ON A CONFIDENTIAL BASIS. NO PORTION OF THIS DOCUMENT MAY BE COPIED, TRACED, PHOTOGRAPHED, OR IN ANY OTHER WAY REPRODUCED, NOR MAY ANY ITEM HEREON DEPICTED BE MANUFACTURED AS SHOWN WITHOUT THE EXPRESS WRITTEN CONSENT OF BHGI. THE RECIPIENT OF THE INFORMATION CONTAINED HEREON MAY NOT DISCLOSE OR MAKE AVAILABLE THE SAME TO ANY OTHER PERSON OR BUSINESS FIRM, NOR MAY THE SAME BE USED EXCEPT FOR THE SPECIFIC PURPOSE INTENDED. BHGI SHALL NOT BE HELD RESPONSIBLE FOR ANY UNAUTHORIZED CHANGES TO THIS DOCUMENT OR ITS INTENT.

THE SHEARER GROUP

3118 HARRISBURG BLVD, SUITE 100, HOUSTON TX 77003
 TEL: (281) 532-2080 ~ FAX (281) 326-1615
www.shearer-group.com

PROJECT:	0014-058-005 Canal Barge	Rev:	0	By:	CTS
CALC:	Draft Tables	Date:	14-Mar-23	Checked:	-

Barge loading conditions to achieve desired draft and trim were calculated using GHS.

Note: Barge trims forward at even loading of all tanks. Even trim was found at each draft by unloading a volume percentage of Tank 1 (P/S) and increasing load percentage equally in Tanks 2 & 3 (P/S).

Capacities - Short tons at various drafts				
Tank Number				
Draft (ft)	1 P/S (ST)	2 P/S (ST)	3 P/S (ST)	Total (ST)
2.37*	-	-	-	-
2.5**	-	-	57.64	57.64
3	-	82.68	204.88	287.56
3.5	21.90	273.72	223.70	519.32
4	100.22	358.22	292.76	751.20
4.5	176.72	444.56	363.32	984.60
5	255.04	530.68	433.72	1,219.44
5.5	337.02	615.58	503.08	1,455.68
6	419.00	701.16	573.04	1,693.20
6.5	504.62	785.36	641.84	1,931.82
7	592.08	869.18	710.36	2,171.62
7.5	677.70	954.64	780.18	2,412.52
8	768.78	1,037.66	848.04	2,654.48
8.5	859.88	1,121.30	916.44	2,897.62
9	952.78	1,204.42	984.34	3,141.54
9.5	1,047.52	1,287.10	1,051.90	3,386.52
10	1,140.42	1,371.26	1,120.68	3,632.36
10.5	1,236.98	1,453.88	1,188.20	3,879.06
11	1,329.90	1,539.02	1,257.78	4,126.70
11.5	1,413.70	1,629.64	1,331.86	4,375.20

* Lightship draft

** Even with Tanks 1 & 2 (P/S) unloaded, barge will trim fwd 1.38ft at 2.5ft draft.

Tank volumes (in ft³) were calculated by modeling tanks in GHS and converted to GAL/BBL.

Tank Volumes - 100% Full			
Tank	Gal	BBL	ft ³
1P	216,215	5,148	28,904
1S	216,215	5,148	28,904
2P	218,069	5,192	29,152
2S	218,069	5,192	29,152
3P	178,220	4,243	23,825
3S	178,220	4,243	23,825
TOTAL	1,225,008	29,167	163,760
98% full		28,584	