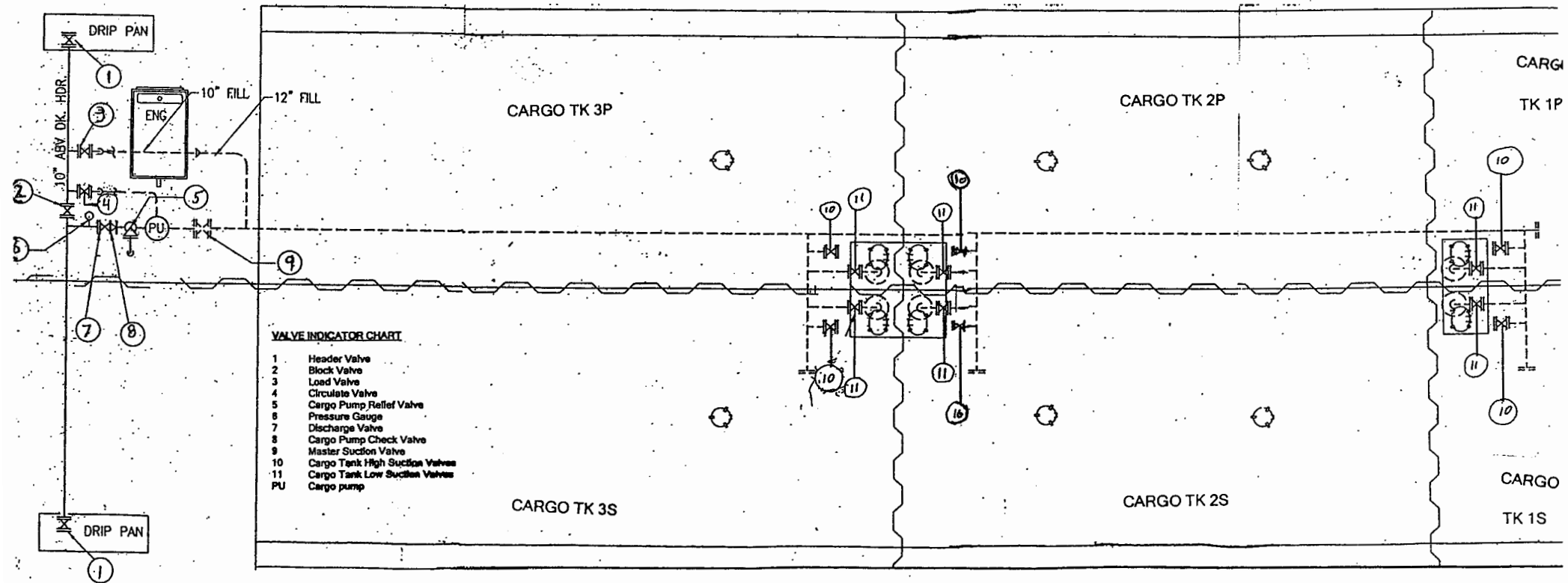


*Revised + Verified
6/1/2012*

CBC 7030



REVISION HISTORY

| REV | ZONE | DESCRIPTION | DATE | BY | CHECK |
|-----|------|-----------------|-----------|-----|-------|
| 0 | - | Initial Release | 14-Mar-23 | CTS | - |

GENERAL NOTES

-

| NO. | DRAWING | TITLE | REV |
|------------------------------|---------|----------------------|------------------------|
| - | - | - | - |
| REFERENCES | | | |
| TITLE: Draft Tables | | | |
| FOR: Canal Barge | | | |
| VESSEL: Canal Barge | | | HULL NO: 980402 |
| DATE: 14-Mar-23 | | SCALE: N.T.S. | |
| DWG. NO: 0014-058-005 | | REV: 0 | |
| DRAWN BY: CTS | | CHECK BY: - | |



THIS DOCUMENT IS THE EXCLUSIVE PROPERTY OF BHGI AND IS FURNISHED ON A CONFIDENTIAL BASIS. NO PORTION OF THIS DOCUMENT MAY BE COPIED, TRACED, PHOTOGRAPHED, OR IN ANY OTHER WAY REPRODUCED, NOR MAY ANY ITEM HEREON DEPICTED BE MANUFACTURED AS SHOWN WITHOUT THE EXPRESS WRITTEN CONSENT OF BHGI. THE RECIPIENT OF THE INFORMATION CONTAINED HEREON MAY NOT DISCLOSE OR MAKE AVAILABLE THE SAME TO ANY OTHER PERSON OR BUSINESS FIRM, NOR MAY THE SAME BE USED EXCEPT FOR THE SPECIFIC PURPOSE INTENDED. BHGI SHALL NOT BE HELD RESPONSIBLE FOR ANY UNAUTHORIZED CHANGES TO THIS DOCUMENT OR ITS INTENT.

THE SHEARER GROUP

3118 HARRISBURG BLVD, SUITE 100, HOUSTON TX 77003
 TEL: (281) 532-2080 ~ FAX (281) 326-1615
www.shearer-group.com

| | | | | | |
|----------|--------------------------|-------|-----------|----------|-----|
| PROJECT: | 0014-058-005 Canal Barge | Rev: | 0 | By: | CTS |
| CALC: | Draft Tables | Date: | 14-Mar-23 | Checked: | - |

Barge loading conditions to achieve desired draft and trim were calculated using GHS.

Note: Barge trims forward at even loading of all tanks. Even trim was found at each draft by unloading a volume percentage of Tank 1 (P/S) and increasing load percentage equally in Tanks 2 & 3 (P/S).

| Capacities - Short tons at various drafts | | | | |
|---|------------|------------|------------|------------|
| Tank Number | | | | |
| Draft (ft) | 1 P/S (ST) | 2 P/S (ST) | 3 P/S (ST) | Total (ST) |
| 2.37* | - | - | - | - |
| 2.5** | - | - | 57.64 | 57.64 |
| 3 | - | 82.68 | 204.88 | 287.56 |
| 3.5 | 21.90 | 273.72 | 223.70 | 519.32 |
| 4 | 100.22 | 358.22 | 292.76 | 751.20 |
| 4.5 | 176.72 | 444.56 | 363.32 | 984.60 |
| 5 | 255.04 | 530.68 | 433.72 | 1,219.44 |
| 5.5 | 337.02 | 615.58 | 503.08 | 1,455.68 |
| 6 | 419.00 | 701.16 | 573.04 | 1,693.20 |
| 6.5 | 504.62 | 785.36 | 641.84 | 1,931.82 |
| 7 | 592.08 | 869.18 | 710.36 | 2,171.62 |
| 7.5 | 677.70 | 954.64 | 780.18 | 2,412.52 |
| 8 | 768.78 | 1,037.66 | 848.04 | 2,654.48 |
| 8.5 | 859.88 | 1,121.30 | 916.44 | 2,897.62 |
| 9 | 952.78 | 1,204.42 | 984.34 | 3,141.54 |
| 9.5 | 1,047.52 | 1,287.10 | 1,051.90 | 3,386.52 |
| 10 | 1,140.42 | 1,371.26 | 1,120.68 | 3,632.36 |
| 10.5 | 1,236.98 | 1,453.88 | 1,188.20 | 3,879.06 |
| 11 | 1,329.90 | 1,539.02 | 1,257.78 | 4,126.70 |
| 11.5 | 1,413.70 | 1,629.64 | 1,331.86 | 4,375.20 |

* Lightship draft

** Even with Tanks 1 & 2 (P/S) unloaded, barge will trim fwd 1.38ft at 2.5ft draft.

Tank volumes (in ft³) were calculated by modeling tanks in GHS and converted to GAL/BBL.

| Tank Volumes - 100% Full | | | |
|--------------------------|-----------|--------|-----------------|
| Tank | Gal | BBL | ft ³ |
| 1P | 216,215 | 5,148 | 28,904 |
| 1S | 216,215 | 5,148 | 28,904 |
| 2P | 218,069 | 5,192 | 29,152 |
| 2S | 218,069 | 5,192 | 29,152 |
| 3P | 178,220 | 4,243 | 23,825 |
| 3S | 178,220 | 4,243 | 23,825 |
| TOTAL | 1,225,008 | 29,167 | 163,760 |
| 98% full | | 28,584 | |