



## How to find our office

Google Maps sometimes suggests a route that leads to an incorrect crossing point over the train tracks where there is no access.

The instructions below show the correct way to arrive, by car or by public transport.

If you have any questions or need further assistance, please do not hesitate to contact us:  
[info@chiralnano.com](mailto:info@chiralnano.com)

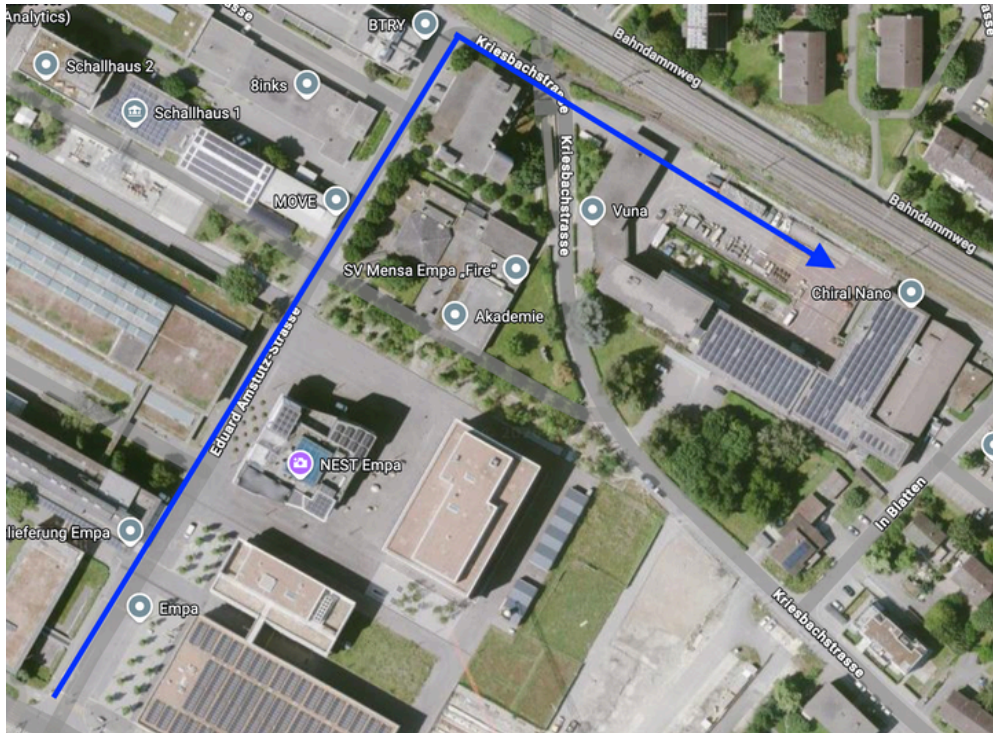


**Überlandstrasse 129 (EMPA)  
8600 Dübendorf, Zurich.**



## By car

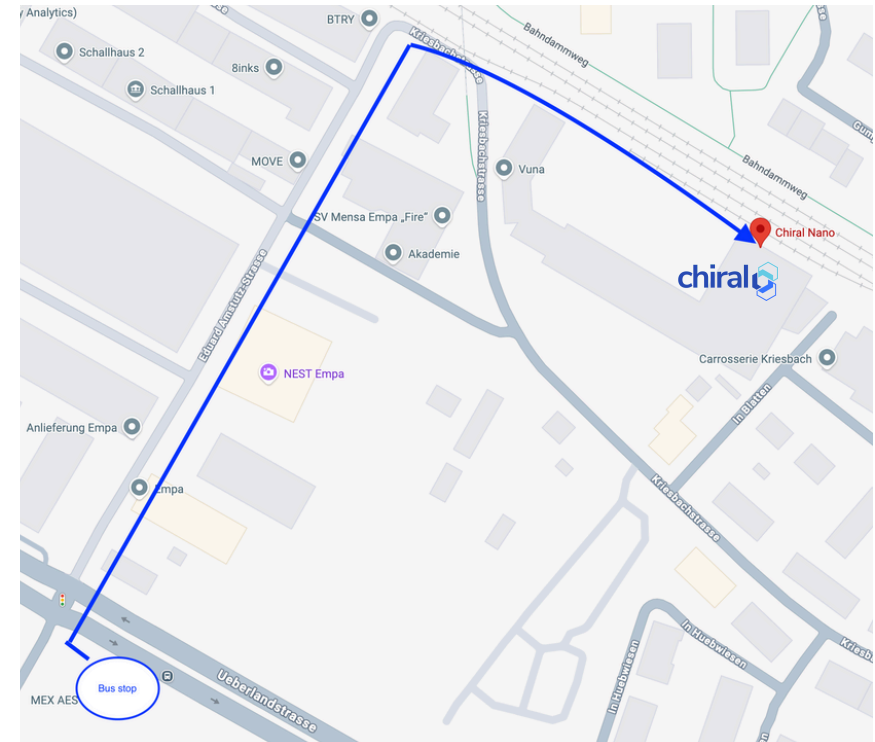
1. Set your navigation destination to Empa Dübendorf.
2. Once you arrive at Empa, do not follow Google Maps further to cross the railway tracks.
3. From Empa, continue straight ahead following the road shown in the map below.
4. Keep driving straight and then turn right, as indicated on the map.
5. Parking is available in the area marked with an arrow on the map. Parking payment is required via the EasyPark app.



## By public transport

### Via Stettbach

1. Take the train to Stettbach.
2. Exit the station and catch the bus 760 in the bus stop B to Empa (3 stops).
3. From Empa stop, follow the path shown in the map below to Chiral.





# By public transport

## Via Dübendorf

- 1.Exit the train and walk along the same platform where the train arrived, heading in the direction of Empa.
- 2.Continue along the platform until you reach the last exit from the tracks. This exit is a ramp. There are stairs before it, but do not take the stairs. Take the last exit via the ramp.
- 3.Walk down the ramp, then turn right (direction stangebuck according to the sign on the ramp).
- 4.Follow the path with a sports field on your right-hand side. Continue straight for a few minutes.
- 5.When the path splits, take the left-hand path that goes slightly uphill.
- 6.On the right, you will see a set of stairs, take the second set of stairs. Go down these stairs and then turn right, passing under a bridge.
- 7.After a short walk, take the small stairs on your right-hand side and open the small door fence (it looks like an entrance to residential buildings).
- 8.Continue straight ahead, keeping warehouses with delivery trucks on your left. You will find the Chiral entrance on your left-hand side.

