

**A BRAND NEW FULLY FITTED AND FURNISHED OFFICE FLOOR TO LET
IN THE HEART OF CENTRAL LONDON**



Entire 6th Floor
6,174 Sq. Ft / 574 Sq. M

DESCRIPTION

Delivering September 2025 to provide a brand new fully fitted and furnished, high quality 'Plug and Play' office space over 6,174 sq. ft, with a contemporary hybrid ceiling finish, with concrete feature and partial suspended ceiling. The floor-to-ceiling glazing provides a bright and inspiring work environment with unrivalled views.

The newly building remodelled reception and lounge area welcomes visitors and tenants alike with carefully curated materials and design features. Beyond the reception, a new bike store and end of trip facilities enables occupiers to arrive at their desks refreshed and ready to go.

Embankment, Leicester Square, Covent Garden and Waterloo stations, are all a short walk away providing access to Underground and National Rail services across London and beyond.



11 Strand London WC2N 5HR

Computer Generated Images:





11 Strand London WC2N 5HR

Computer Generated Images:





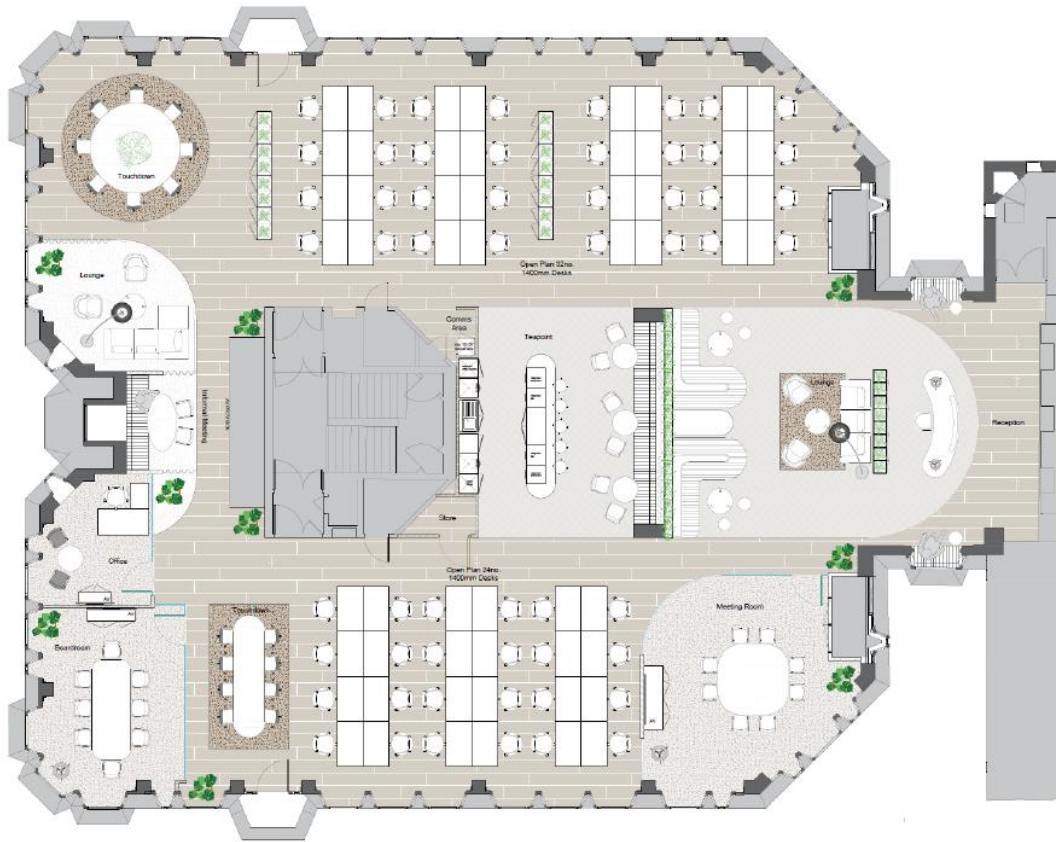
11 Strand London WC2N 5HR

Computer Generated Images:





11 Strand London WC2N 5HR



AMENITIES

- Self-contained, fully fitted office
- Full height glazing
- Excellent natural light
- Car parking available - POA
- New bicycle storage, showers & changing
- Stunning views across Trafalgar Square
- 3 x 10-person passenger lifts
- Raised floors
- Newly refurbished building reception
- Hybrid ceiling finish with concrete feature and partial suspended ceiling

AVAILABILITY

FLOOR	SIZE (Sq Ft)	RENT (PSF)	RATES (approx.)	SERVICE CHARGE	TOTAL PER ANNUM	AVAILABILITY
6 th Floor	6,174	£95.00	£35.00	£19.00	£919,926	September '25

Viewings by arrangement through sole agents Noble Harris:-

Matthew Noble
mnoble@nobleharris.co.uk
079 8099 1214

Carl Dobrin
cdobrin@nobleharris.co.uk
075 4507 7959

MISREPRESENTATION ACT | COPYRIGHT | DISCLAIMER

Noble Harris LLP, for themselves and for the vendors of this property, whose agents they are, give notice that (1) the particulars and any further information communicated by any means to potential purchasers of the property described in the particulars, or their advisers, in connection with the possible sale of the property are provided solely for the purpose of assisting potential purchasers in decided whether they wish to proceed with further investigation of the property and do not constitute either the whole or any part of an invitation, offer or contract for sale of the property; (ii) all descriptions, dimensions, references to condition and necessary permissions for use and occupation and other details are given in good faith and are believed to be correct as at the date of the particulars (or the date of the relevant information if earlier). However, potential purchasers are not entitled to rely on them as statements or representations of fact but should satisfy themselves by searches, enquiries, surveys and inspections or otherwise with regard to the accuracy of such details. No responsibility or liability is or will be accepted by Noble Harris, the vendor(s) of the property or any of their respective subsidiaries, affiliates, directors, officers, representatives, employees, advisors, or agents for any loss or damage suffered by any party, resulting from reliance on the particulars or any other information communicated by any means to that party, or its advisers, in connection with the possible sale of the property. No person in the employment of Noble Harris or the vendor(s) has authority to make or give any representation or warranty, express or implied, in relation to the property. References to Noble Harris include any joint agents acting with Noble Harris.