

FY2026_1Q Reports

Gala Inc.

Standard market:4777

May 15th 2026

The logo for GALA, featuring the word "GALA" in a bold, white, sans-serif font. The letter "A" is stylized with a small diamond shape at its base. The logo is positioned on a blue diamond-shaped background element.

Copyright © Gala Inc. All rights reserved.

INDEX

01

FY2026 1Q Financial Statement

02

Topics

03

Gala Group

GALA

Copyright © Gala Inc. All rights reserved.

1. FY2026/1Q Financial statement

1Q Consolidated Statement of profit



Summary of Quarterly Consolidated Financial Statements (QoQ) Unit: Mil JPY

	FY2025/1Q (Jan-Mar 2025)	FY2026/1Q (Jan-Mar 2026)	Change
Sales	473	535	13.2%
Cost of sales	200	163	△ 18.4%
Gross profit	272	371	36.4%
SG&A	402	395	△ 1.8%
Operating profit	△ 130	△ 23	81.7%
Ordinary profit	△ 132	24	N/M
profit attributed to Gala Inc.	△ 88	△ 13	85.1%

Cash Flow(QoQ) Unit: Mil JPY

	FY2025/1Q (Jan-Mar 2025)	FY2026/1Q (Jan-Mar 2026)
Operating CF	△ 70	23
Investment CF	△ 32	△ 108
Financing CF	△ 31	109
Cash & Cash equivalents (End of Period)	378	462

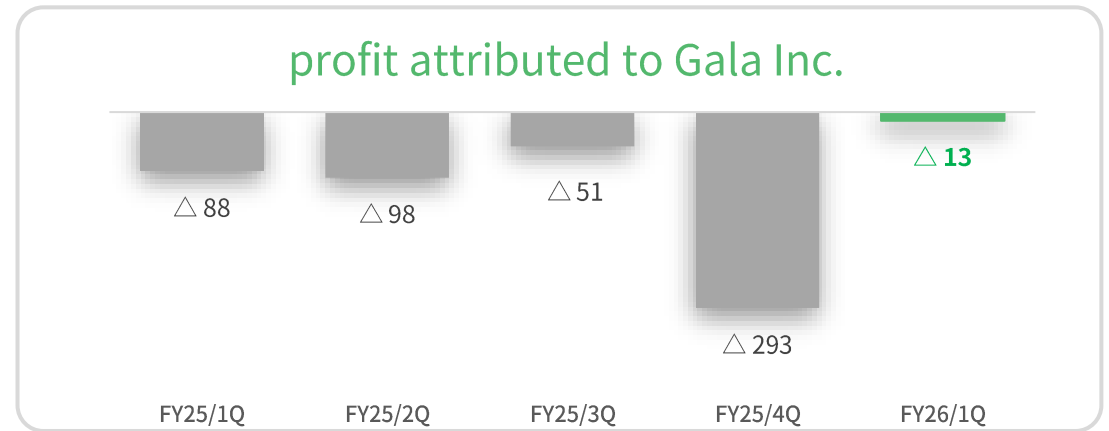
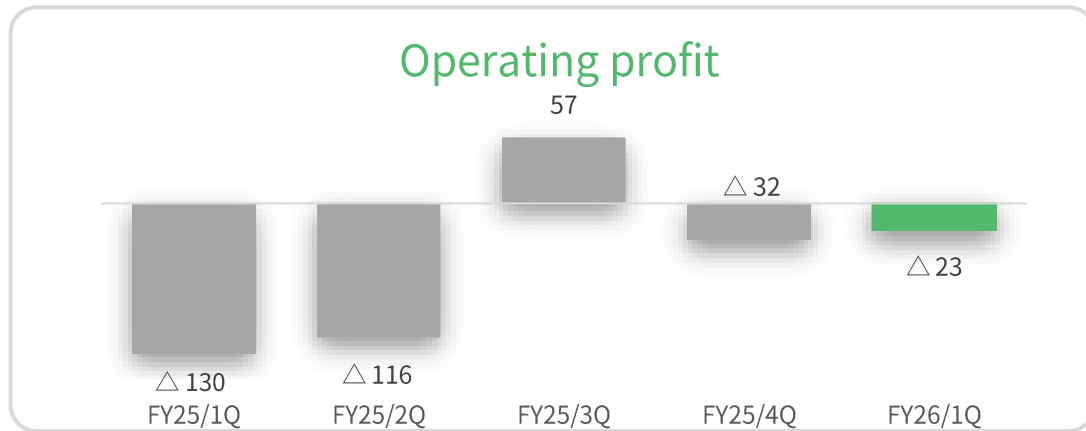
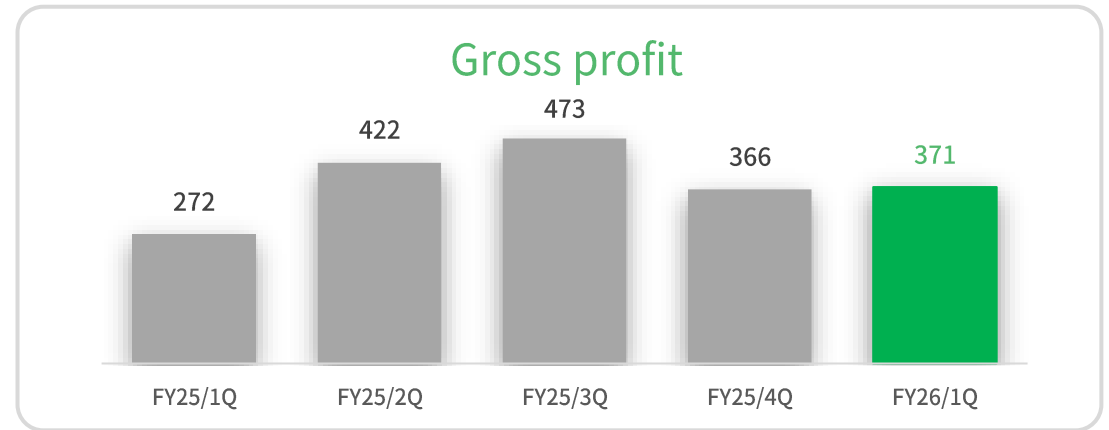
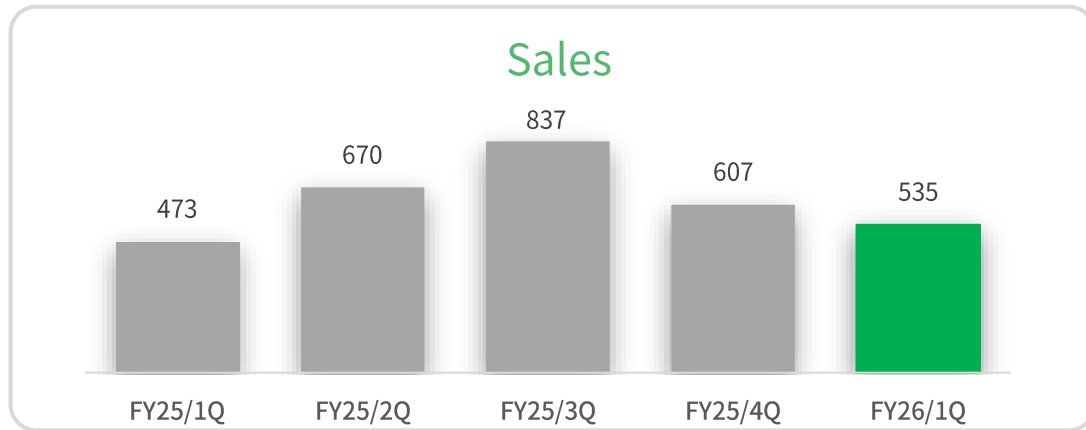
GALA

1. FY2026/1Q Financial statement

Quarterly Consolidated Statement of profit Trends



Unit: Mil JPY

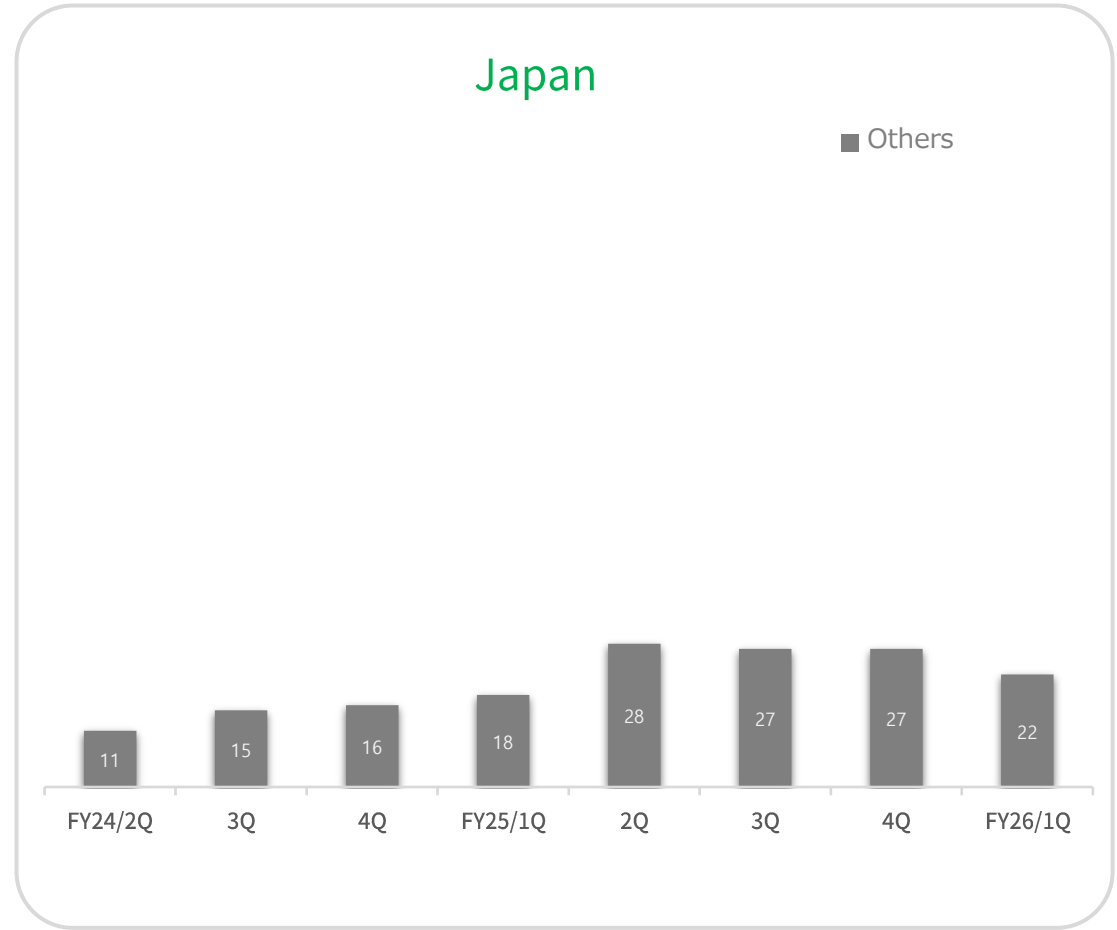
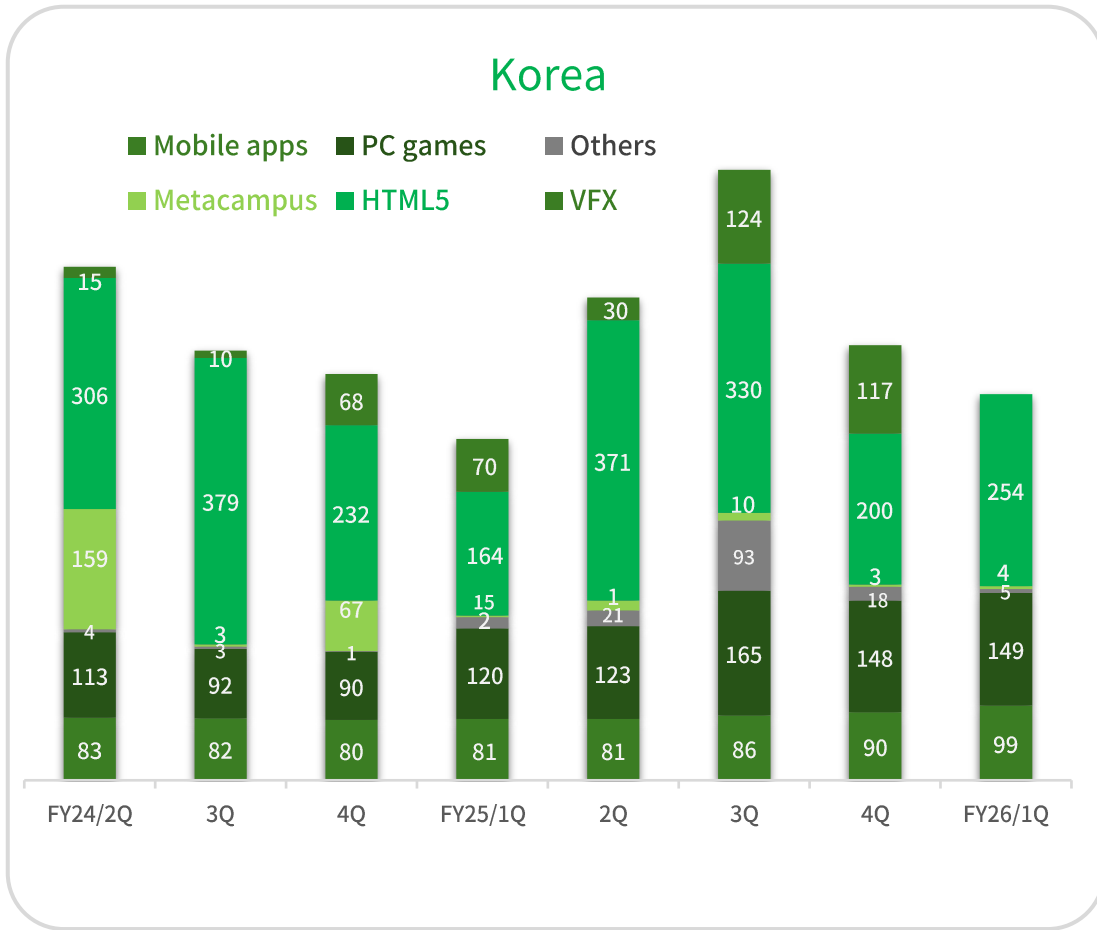


1. FY2026/1Q Financial statement

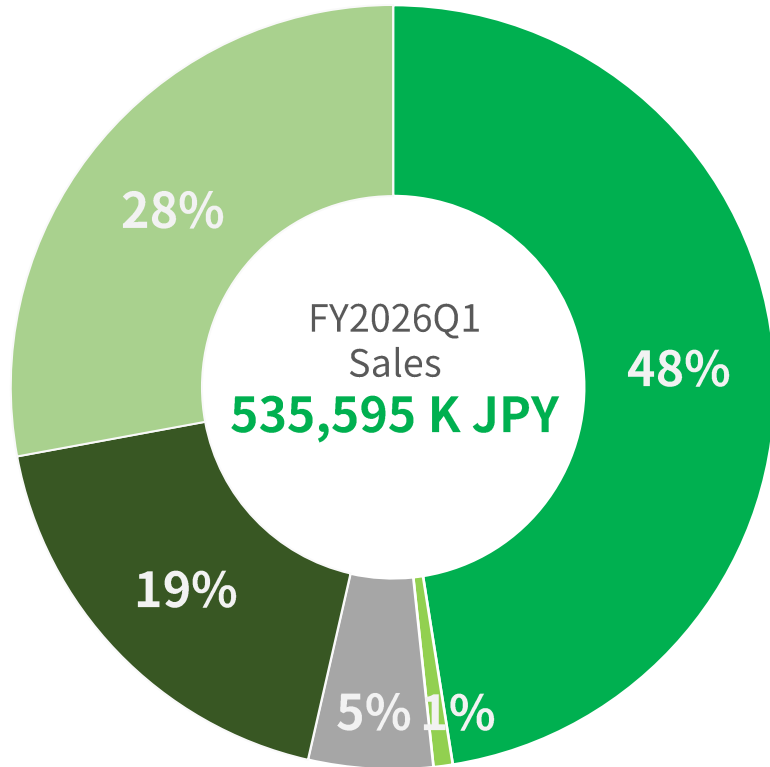
Segment Sales



Unit: Mil JPY



Sales Breakdown



- HTML5
- Meta campus
- Others
- Mobile apps
- PC games

HTML5

Sales 254M JPY

48%

Flyff Universe: FWC (Flyff World Championship) scheduled to launch from April 2026. Currently preparing for service launch following obtainment of a license for China.

PC games

Sales 149M JPY

28%

Provision of services for "Flyff Online" & "Rappelz Online." A license agreement has been entered into with BEST KIRIN GLOBAL for "Flyff Online" covering the Taiwan, Hong Kong & Macau regions, with service launched since June 2025.

Mobile Apps

Sales 99M JPY

19%

Provision of "Flyff Legacy," "Winwalk," "WinQuiz," and "Poll Cash."

Meta Campus

Sales 4M JPY

1%

Providing a metaverse platform to universities and educational institutions as a student community space and event venue, including university entrance briefings.

Others

Sales 28M JPY

5%

Treehouse business and cloud services business.

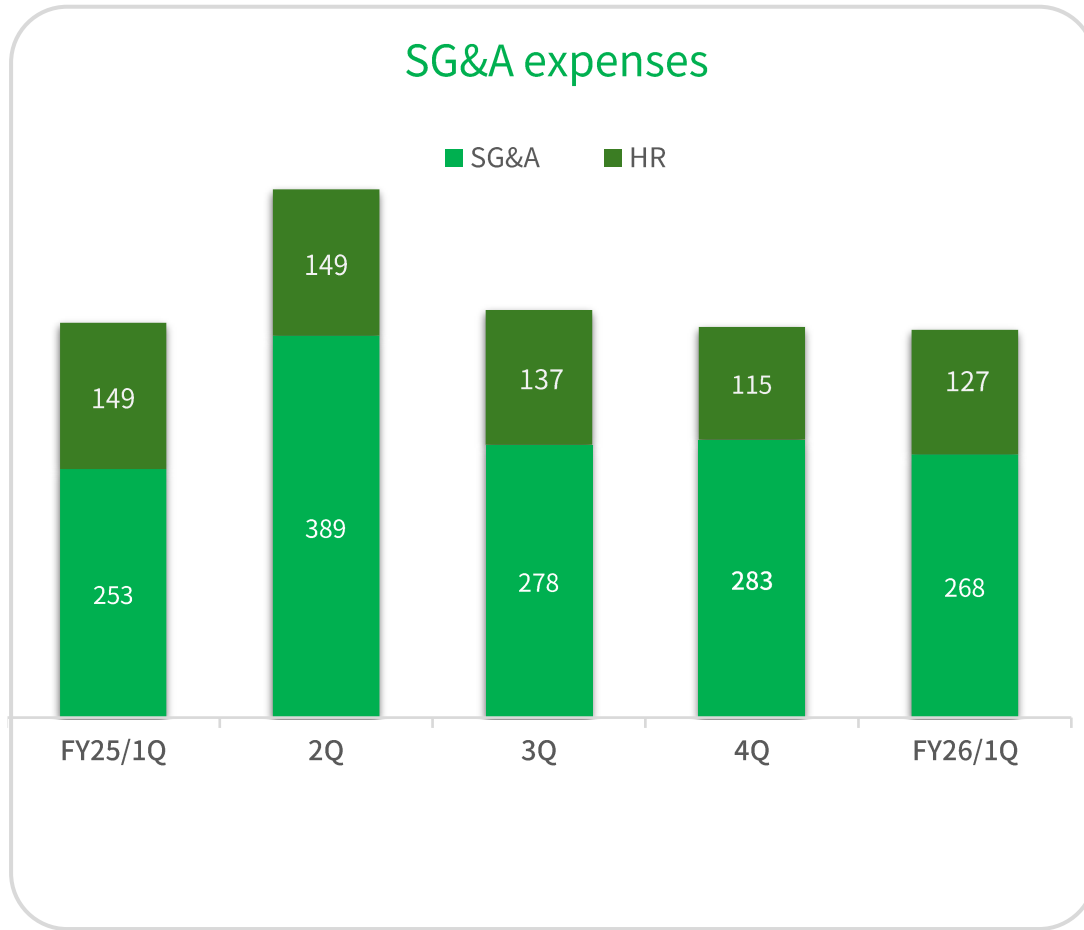


1. FY2026/1Q Financial statement

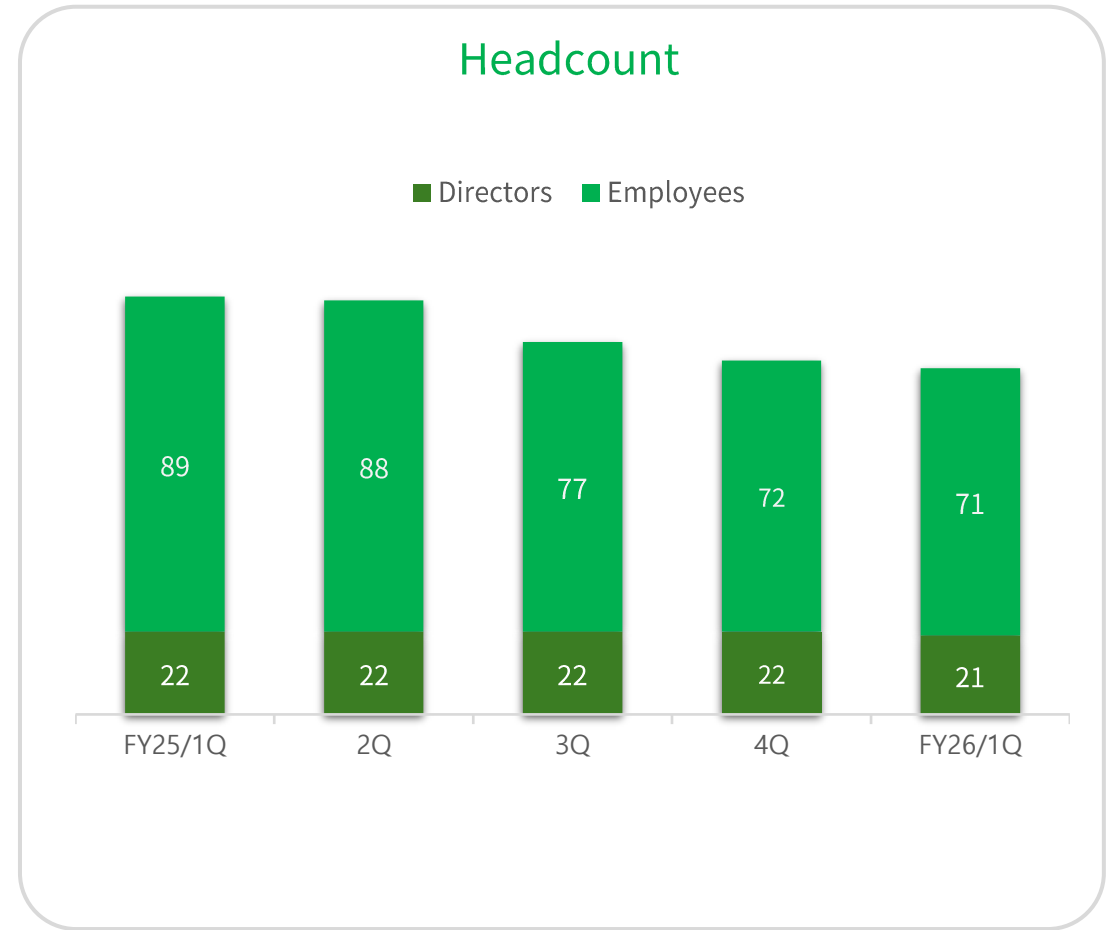
SG&A and HR expenses(Consolidated)



Unit: Mil JPY



Unit: Person



INDEX

01 FY2026 1Q Financial statement

02 **Topics**

03 Gala Group

GALA

Copyright © Gala Inc. All rights reserved.

2. Topics

Flyff Universe in China



Flyff Universe China Successfully Completed CBT!

Maximum Concurrent Users (CCU): Approximately 3,000
Total Participating Users: Approximately 15,000
CBT Period: 3 April 2026 – 10 April 2026
Official Website: <https://ff.ruiwoo.cn/>

The 2nd CBT and OBT Are Coming Soon!

Gala Lab will incorporate user feedback from the first CBT, while the publisher plans to launch the 2nd CBT and OBT in Q2 2026.



2. Topics

Future Plans by Business Segment



HTML5 Business

2nd CBT of Flyff Universe in China will be launched in 2Q of FY2026
OBT of Flyff Universe in China will be launched in 2Q of FY2026

PC game Business

Rappelz Online for Taiwan, Hongkong and Macau will be launched in 2Q of FY2026

Meta Campus Business

The metaverse platform “UVERSE” is currently being provided to multiple universities,
with plans for continued service expansion.

VFX Business

3rd Short drama title will be launched on OK cashbag platform in Korea



GALA

INDEX

01 FY2026 1Q Financial statement

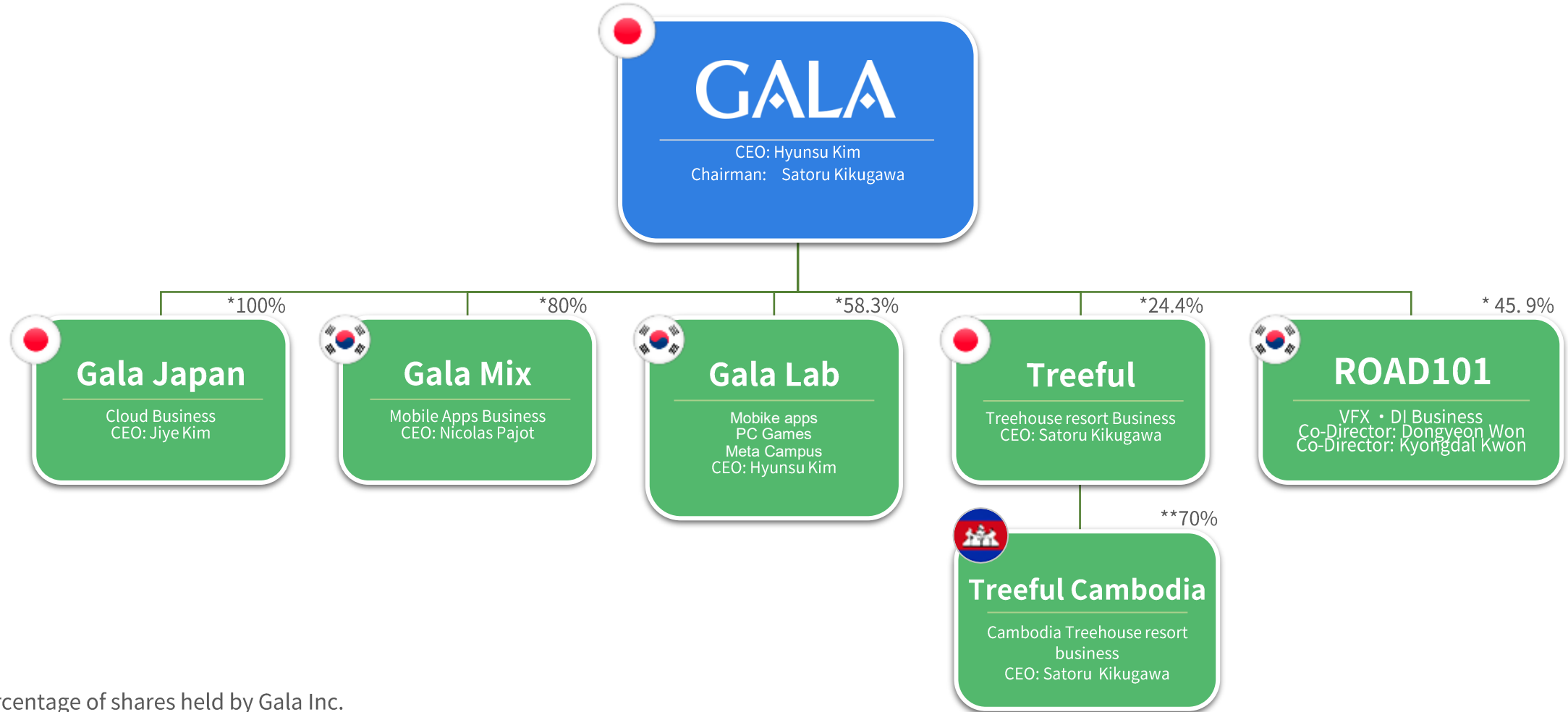
02 Topics

03 Gala Group

GALA

Copyright © Gala Inc. All rights reserved.

Gala group organization



* Percentage of shares held by Gala Inc.

To ensure clear responsibility, each CEO invested in his/her respective company.

**This is the shareholding ratio of Treeful Inc.



Thank you

GALA

Copyright © Gala Inc. All rights reserved.