

COMBINED MODULES FOR RACK IP IN TO DVBT/C MODULATOR IPDVB

ANTTRON

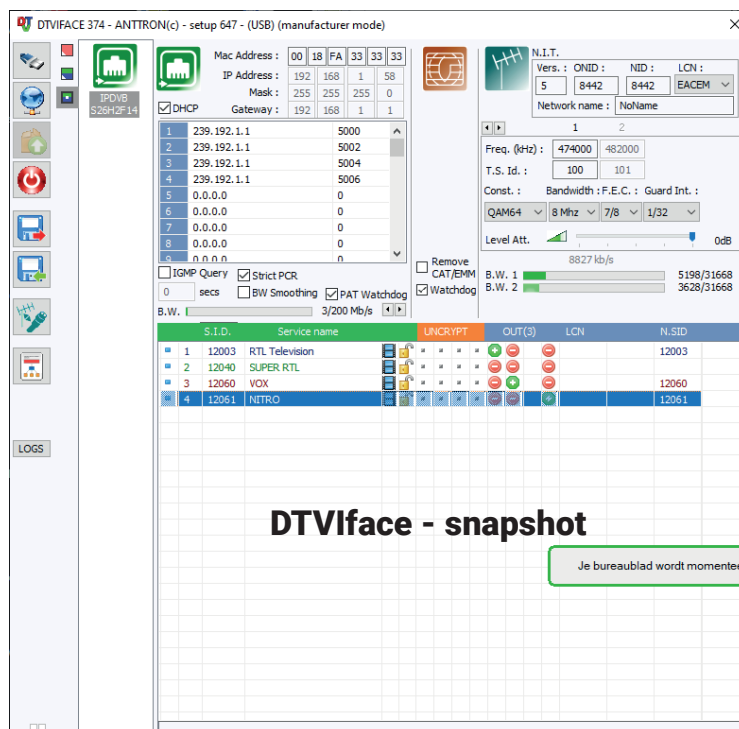
- IP input : UDP/RTP
- Up to 31 SPTS/MPTS streams
- 2 DVBT/C agile output channels
- Possibility to extend the number of output channels by adding an extra modulator (DTVDM2/DTVDM4F) following IPDVB module

The IPDVB module purpose is to capture SPTS/MPTS services from several ethernet unicast and/or multicast ports (either streamed in RTP or UDP), multiplex them in a single TS that is provided to the 2 available modulators (DVBT/C) on board of the IPDVB module.

The single TS is also sent to the DTVRack backplane. The extracted services can then be reorganized in multiple TS and modulated in DVB-C, DVB-T or even streamed again in IP using various output modules.



IPDVB



DTViface - snapshot

*Specifications, descriptions and photographs are subject to change without notice.

*The products comply with the requirements of the CE mark. The declaration of conformity is available upon request.

TECHNICAL SPECIFICATIONS:

Input IP	Connector	RJ45
	Standard Protocols Capacity	IEEE 802.3 10/100/1000Base-T Unicast/multicast IP over UDP/RTP Up to 31 simultaneous SPTS and/or MPTS channels
Output DVBT (2 agile channels)	Maximum output level Level adjustment Insertion loss - loop	> 95 dBμV 1 - 20dB (using DTViface) < 2 dB
	Output frequency	170-230 MHz + 470-862 MHz
	Constellation	QPSK/16QAM/64QAM
	FEC	1/2, 2/3, 3/4, 5/6, 7/8
	Guard interval	1/4, 1/8, 1/16, 1/32
	Mode - MER	2K - >33 dB
Output DVBC (2 agile channels)	Maximum output level Level adjustment Insertion loss - loop	> 95 dBμV 1 - 20dB (using DTViface) < 2 dB
	Output frequency	50-862 MHz
	Constellation	16,32,64,128,256 QAM (EN 300 429)
	Symbol rate	4 - 6.96 Mb/s
	MER	> 39 dB
	DVB Processing	TsID, NIT version, ONID, NID, Network Name, SID, LCN