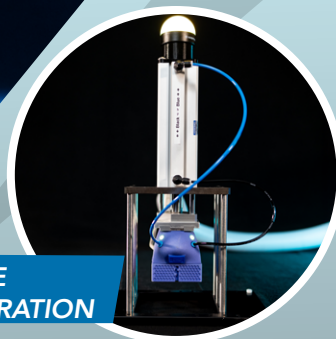


# Chroma



## TARGET APPLICATIONS FOR ATE/SLT

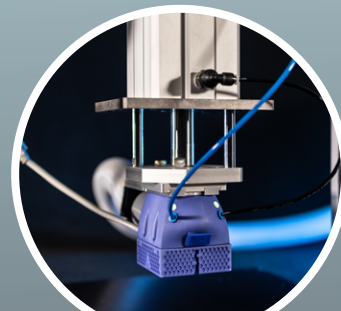
- GPU, CPU, APU
- AI Accelerators
- Automotive IC
- Aerospace and Defense



ATE  
CONFIGURATION



MODULAR TEST SITE  
EXPANSION CAPABILITIES



SYSTEM LEVEL TESTING  
CONFIGURATION



RACK

The rack system layout supports mass parallelism for **bench testing**, while compatibility with **CATS handlers** enables **lights-out automated testing** for development purposes.

## SEACOBRA

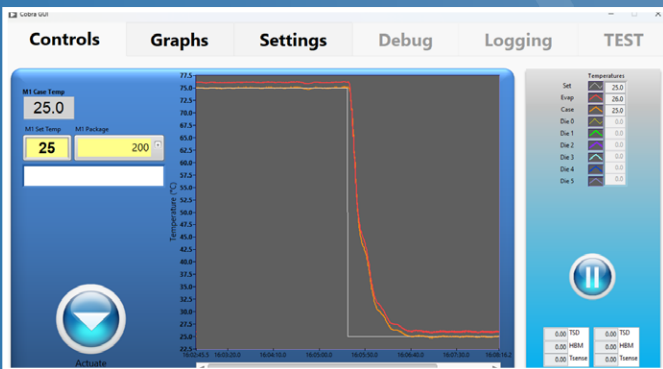
**Cobra Thermal Systems** deliver advanced temperature-forcing capabilities to meet the thermal demands of **post-silicon validation** and **device characterization**. Powered by the performance and reliability of **direct phase change technology** with fully integrated **electronics** and **software**, Cobra Thermal Systems provide unmatched precision, efficiency, and adaptability.

The **SeaCobra** model builds upon the same proven technology as the **base Cobra**, enhanced with a more powerful **inverter-driven compressor** and increased **heater power** to meet the demands of **high-power applications exceeding 1kW**. SeaCobra provides precise temperature control and robust cooling performance, ensuring unparalleled **energy efficiency**, **adaptability**, and **reliability for challenging testing environments**.

# Chroma

## KEY FEATURES

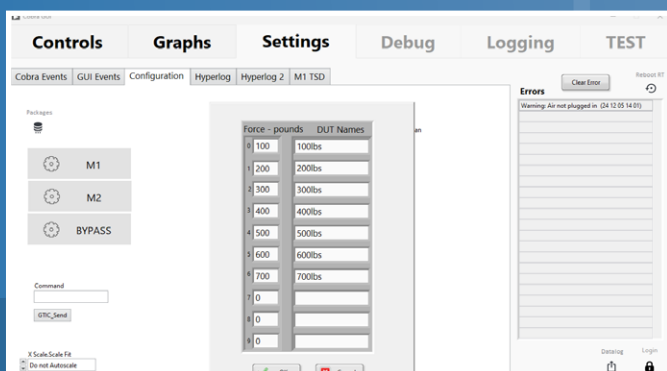
- Direct phase change allows  $-40^{\circ}\text{C}$  to  $150^{\circ}\text{C}$  up to 2kW
- Fully integrated and automated temperature and pneumatic control
- Flexible software to meet unique customer requirements
- Thermal Diode and Digital temperature sensor feedback
- Power monitoring
- Made in the USA
- Handler Integration



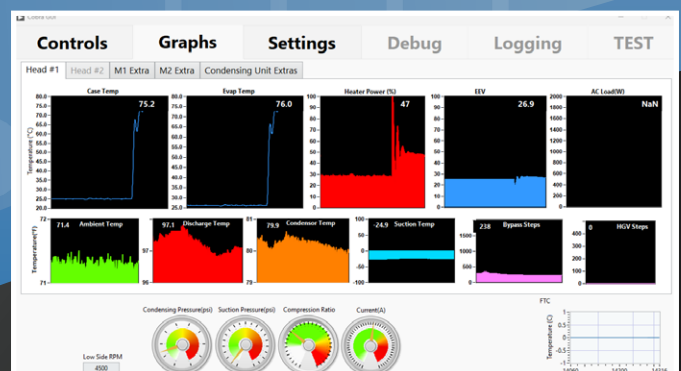
GUI Control Center: Ramp Down



GUI Control Center: Steady State



Application specific to IC-DUT Socket Force set up options

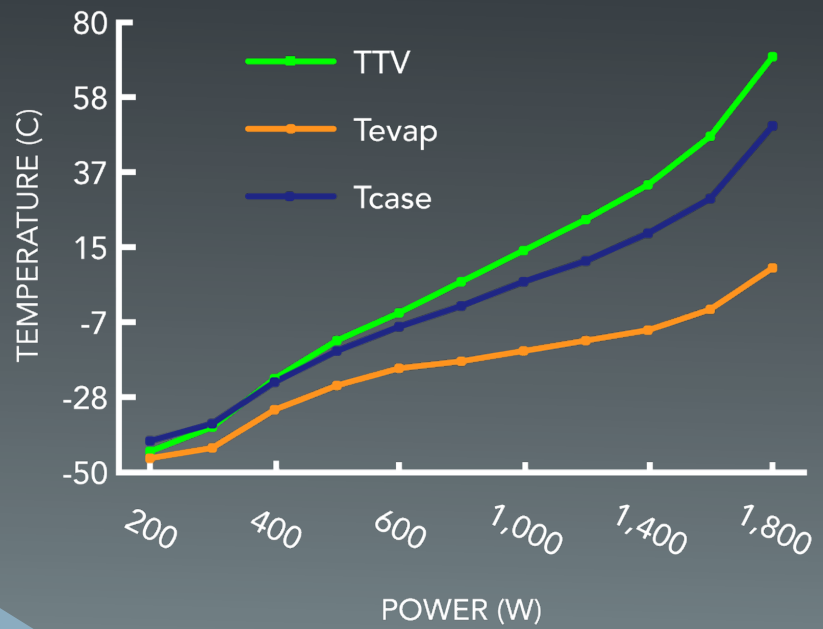


GUI Interface Experience

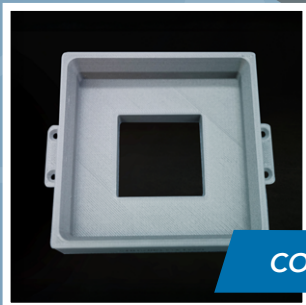


# TEMPERATURE VS POWER

Whether for SLT, ATE, or bench testing, Cobra Thermal Systems provide unmatched precision, efficiency, and adaptability, powered by the performance and reliability of direct phase change technology.



## ACCESSORIES



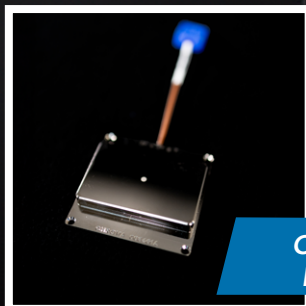
COBRA PURGE



REMOTE BOX



INTEGRATED TABLET PC

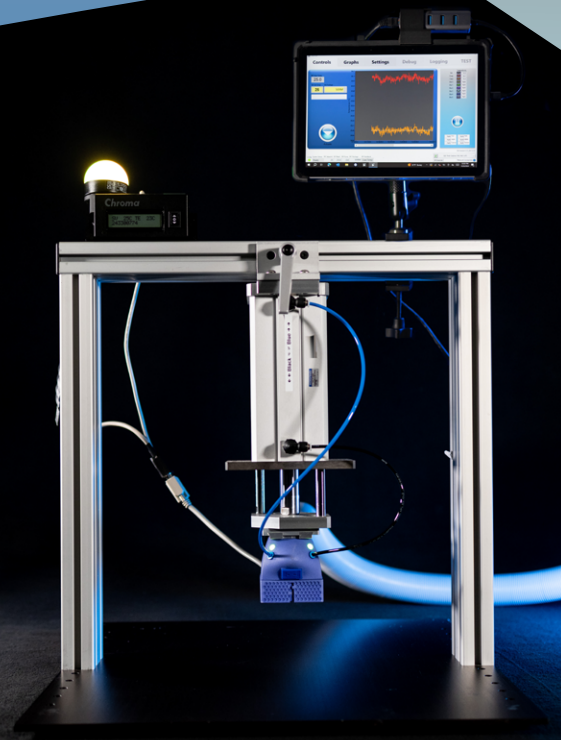


CUSTOM IC PEDESTAL

The **PowerBox** accessory improves thermal performance as well as prevents **thermal runaway** and protects devices and sockets from damage in SLT and Bench Test.



POWER BOX



## SPECIFICATIONS

Model	Cobra Single Head Thermal System
Dimensions	813 mm (L) x 426 mm (W) x 407 mm (H)
Weight	43 kg
DUT Dimensions	5x5 mm to 120 x 120 mm
Contact Force	≥300 kgs (Changing the pneumatic cylinder can increase/decrease the socketing force)
Temperature	-40°C to 150°C (Accuracy: 2°C with no load, T/C Accuracy: 1°C, Stability: 1°C under controlled conditions, Tolerance: ± 3°C at steady state)
Temperature Transition Rates	Cooling: >2°C/sec Heating: >1°C/sec
Communication	TCP/IP, RS232, GPIB (Optional)
Facility Requirements	Power: 208-240V 15A 50/60Hz 1Ø, Ambient temperature: 5°C to 30°C, Water: 3LPM at 25°C or below, CDA: 100psi minimum with -40°F dew point, 0.5cfm

All specifications are subject to change without notice.

## ORDERING INFORMATION

### COBRA HEADQUARTERS

CHROMA ATE INC.  
675 Sycamore Dr., Suite 100  
Milpitas, CA 95035, USA  
T: +1-408-969-9998  
www.chromaus.com  
info@chromaus.com

### USA HEADQUARTERS

Main contact:  
CHROMA ATE INC.  
7 Chrysler  
Irvine, CA 92618, USA  
T: +1-949-421-0355  
www.chromaus.com  
info@chromaus.com

### GLOBAL HEADQUARTERS

TAIWAN  
CHROMA ATE INC.  
88 Wenmao Rd., Guishan Dist.,  
Taoyuan City 333001, Taiwan  
T: +886-3-327-9999  
www.chromate.com  
info@chromate.com



CHINA  
CHROMA ELECTRONICS  
(SHENZHEN) CO., LTD.  
8F, No.4, Nanyou Tian An  
Industrial Estate, Shenzhen,  
China PC: 518052  
T: +86-755-2664-4598  
info@chromate.com

JAPAN  
CHROMA JAPAN CORP.  
472 Nippa-cho, Kouhoku-ku,  
Yokohama-shi, Kanagawa,  
223-0057 Japan  
T: +81-45-542-1118  
www.chroma.co.jp  
info@chromate.com

EUROPE  
CHROMA ATE EUROPE B.V.  
Morsestraat 32,  
6716 AH Ede, The Netherlands  
T: +31-318-648282  
salesnl@chromaeu.com

INDIA  
QUANTEL TECHNOLOGIES INDIA  
A Private Limited (a company of Chroma Group)  
#589, VP Chambers, Ground floor,  
1st Cross, 3rd Block, Koramangala,  
Bangalore 560034  
T: +91-80-4094-1507/20