



LEASING BROCHURE


Village Mall
HARTBEESPOORT

  [villagemall.co.za](https://www.villagemall.co.za)



ABOUT
HARTBEESPOORT

Hartbeespoort, informally also known as “Harties”, is a town located in the North West province. Hartbeespoort lies in a valley to the south of the Magaliesburg mountain range and north of the Witwatersberg mountain range.

Hartbeespoort is about 35 kilometres nort-west of Johannesburg and 20 kilometres west of Pretoria. The town consists of holiday homes and permanent residences around the dam as it is popular with visitors from nearby Gauteng.

ABOUT
VILLAGE MALL | EXTENSION PHASE 3

Village Mall, a thriving shopping destination situated in the heart of Hartbeespoort, officially opened its doors in October 2008. Following its initial success, the mall expanded with the completion of Phase 2 in 2011. Now, as the anticipation builds for the next chapter in its development, Village Mall is proud to announce the upcoming Phase 3.

Scheduled to add 5,471m² of value retail to the existing space, Phase 3 promises to enhance the shopping experience for visitors. Anchored by the renowned Builders Express.




We extend a warm invitation to explore Village Mall— A vibrant retail hub that goes above and beyond community expectations, serving as an exceptional destination for value-driven shopping.

INDEX

INTRODUCTION Fast Facts	2
LOCATION MAP Macro, Micro, Site Location & Orientation Map	3-8
MALL MAP	9
MALL IMAGES	11

PHASE 1 + 2

FAST FACTS

		
62	25 726m²	1 743
Stores	(GLA) Total Size	Open & Free Parking

PHASE 3 Size: 5 741m² | Builders Express: 1 671m² | Parking Bays: 268

Easy access from the main road	Easy access to tourists attractions such as:  Hartbeespoort Aerial Cable Way  Chameleon Village  Hartbeespoort Dam Wall
Direct access to all entrances	
Comprehensive retail offering	

OTHER FACTS

 OUR LOCATION: located on the R511 and Magalies Boulevard

ANCHOR TENANTS

				
---	---	---	---	---

MACRO
LOCATION MAP

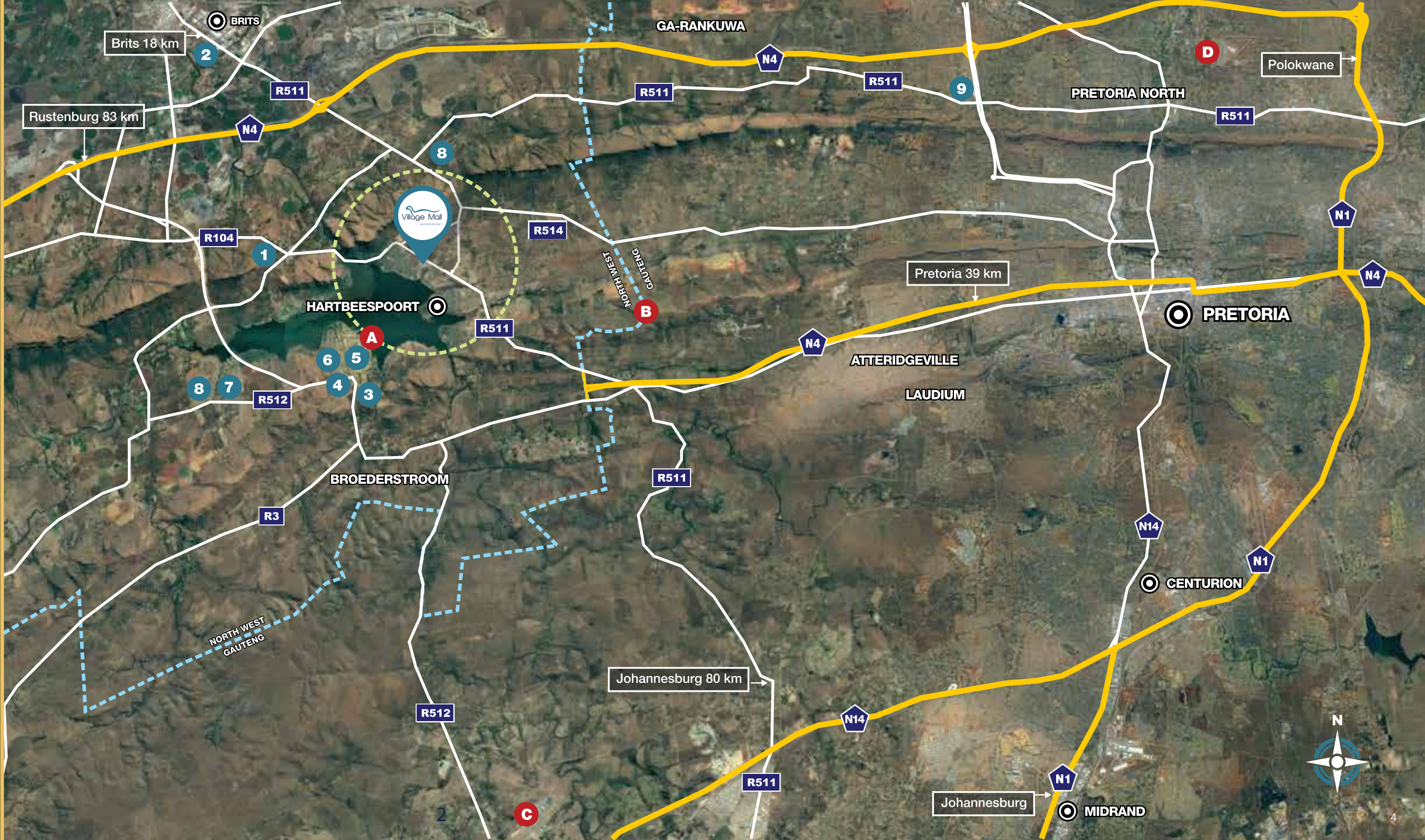
DISTANCES FROM
VILLAGE MALL

Brits	18 km
Pretoria	39 km
Johannesburg	80 km
Rustenburg	83 km

LEGEND

1	Chameleon Village	7 km
2	Brits Mall	18 km
3	Pecanwood College	21 km
4	The Islands Mall	22 km
5	Pecanwood Estate	23 km
6	The Islands Estate	23 km
7	Westlake Country & Safari Estate	28 km
8	The Coves	29 km
9	Wonderpark Shpping Centre	35 km

- A 5 km Radius
- B North West & Gauteng Province Border
- C Lanseria International Airport
- D Wonderboom Airport



MICRO
LOCATION MAP

OTHER RETAIL
IN THE AREA

- A Sediba Plaza (10,918m2) 2 km
- B Jasmyrn Farmers Market 4,3 km

POINTS OF INTEREST

- 1 French Toast 1,8 km
- 2 Hartbeespoort Aerial Cableway 2,8 km
- 3 Pretville 3,5 km
- 4 Hartbeespoort Dam Wall 5 km

ESTATES

- 5 Birdwood Estate 3,1 km
- 6 La Camargue Estate 3,5 km
- 7 Xanadu Eco Park 4,3 km

SCHOOLS

PRIMARY SCHOOLS

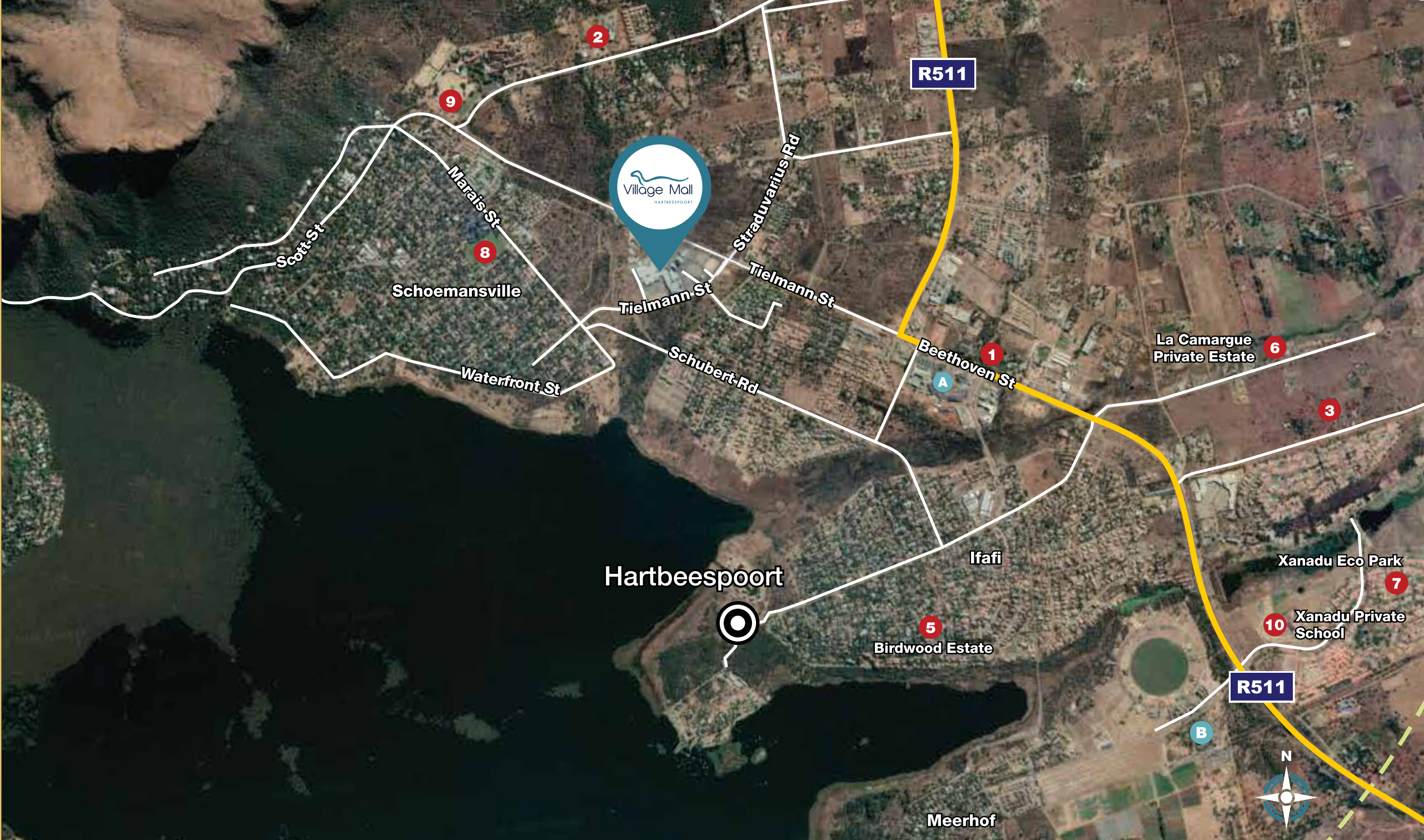
- 8 Laerskool Generaal Hendrik Schoeman 1,8 km

HIGH SCHOOLS

- 9 Hoërskool Hartbeespoort 2,1 km

PRIVATE SCHOOLS

- 10 Xanadu Private Schools 4,1 km



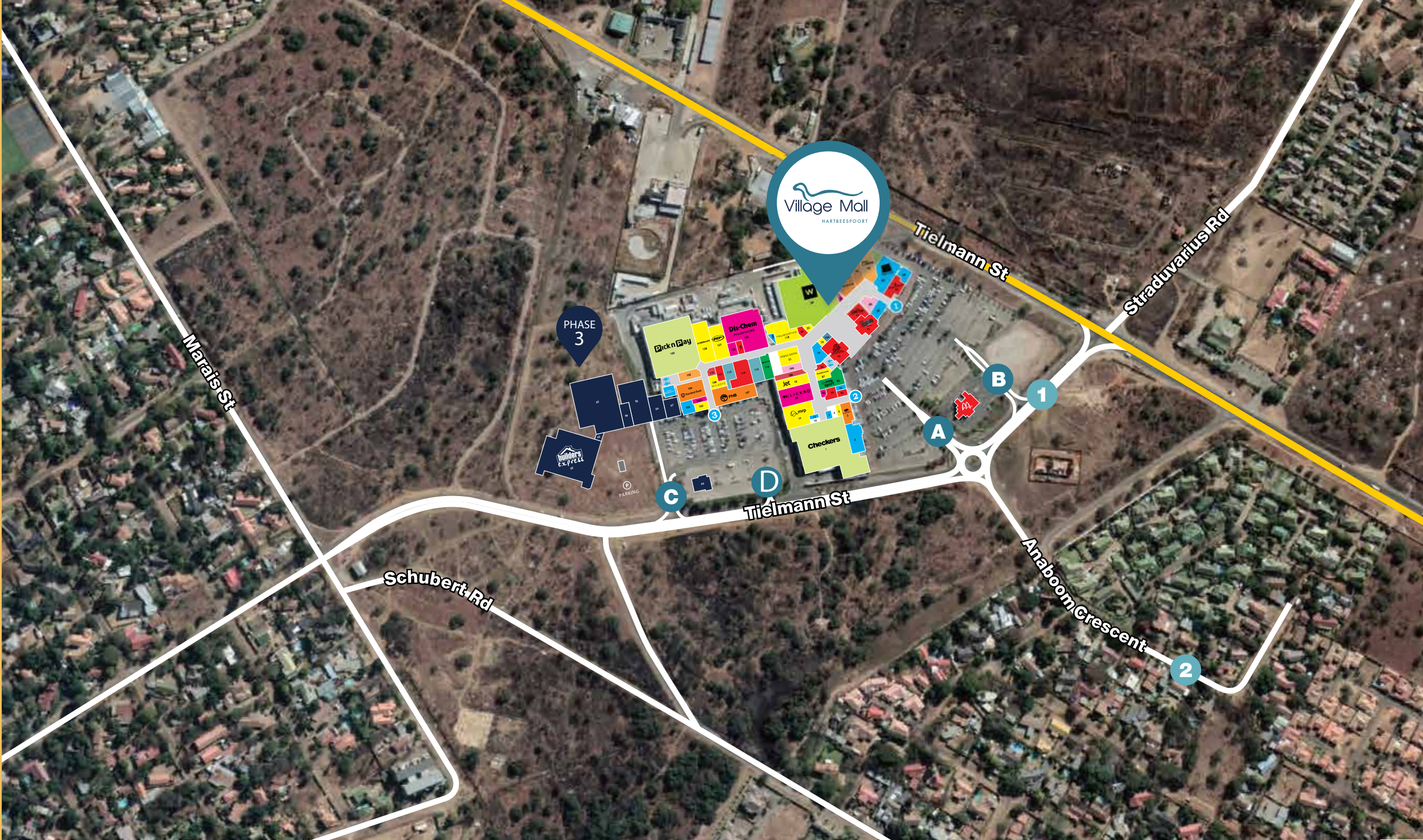
SITE LOCATION
ORIENTATION MAP

MAIN ROUTES
IN THE AREA

- 1 Tielmann St
- 2 Anaboom Crescent

POINTS OF INTEREST

- A Entrance & exit to Village Mall via Tielmann St
- B Entrance & exit to Village Mall via Tielmann St
- C Entrance & exit to Village Mall via Tielmann St



SITE LOCATION
ORIENTATION MAP

PHASE 3

Size: 5,741m²
Builders Express: 1671m²
Parking Bays: 268



MALL MAP

(GLA) TOTAL SIZE
Village Mall 30 314 m²

STORE LISTING

AUDIO, CELLULAR & ELECTRONICS
95 Cell Café
218 Incredible Connection
29 MTN
86 Telkom
93 Vodacom

BANKS, FOREX & FINANCIAL SERVICES
45 Absa
3 Capitec
106 First National Bank
63 Nedbank
104 Standard Bank

BOOKS & STATIONARY
18A Bargain Books
18 PNA

FASHION
128 Ackermans
87 Markham
108 Miladys
19 Mr Price Clothing
23 Obiriani Men
75 Obiriani Women
127 PEP
114 Pick n Pay Clothing
111 Queenspark
103 Senqu
118 Truworths

DEPARTMENT STORES
34 Woolworths

EYEWEAR & OPTOMETRISTS
7 Leana Oberholzer Optometrists
110 Spec Savers

FOOTWEAR
113 Shoe City
115 Tekkie Town

GROCERIES
1 Checkers
100 Pick n Pay

HAIR, HEALTH & BEAUTY
20 Clicks
124 Dis-Chem
44 Mens Street Barber
103A Sorbet
92 TBC

HOME, DÉCOR & FURNITURE
21A Continental Linen
42 Mr Price Home
47 PEP Home
125 Village Mall Laundry
Sheet Street

JEWELLERY & ACCESSORIES
73A American Swiss

RESTAURANTS & FAST FOOD
10 Big Joe Pies
70A Roco Mamas
708 Burger King
McDonald's
52 Mugg & Bean
71 Panarottis
72 Spur

SPECIALITY
60 Absolute Pets
11 Bittong @ Village
76 Cape Union Mart
2 Checkers Liquor
50 Crazy Plastics
96 Manzi Water
105 Gasland
120 GMR Security
102 PnP Liquor
54 PostNet
KIOSK 1 Twisp | Vuse Kiosk
107 The Crazy Store Village
53 Village Laundry

SPORT & OUTDOOR
90 Mr Price Sport
116 Total Sports



PHASE
1+2

PHASE
3





MALL IMAGES






moolmangroup
OUR NAME PRECEDES US
ESTD 1985


**TWIN
CITY**
GROWING TOGETHER

CONTACT

Magalies Blvd, Schoemansville, Hartbeespoort

GENERAL MANAGER

Heleen Erasmus

C +27 (0) 82 304 2124

W +27 (0) 12 253 9160

gm@villagemall.co.za

villagemall.co.za  

LEASING

Kaitlin Bester

C +27 (0) 79 663 0061

kaitlin@moolmangroup.co.za

facebook.com/villagemallhartbeespoort


Village Mall
HARTBEESPOORT