

GENERAL NOTES:

1. UNIT WEIGHT: 1010 lb (458 kg)
2. SHIPPING WEIGHT: 1597 lb (724.4 kg)
3. CRATED EXTERIOR DIMENSIONS: 86" WIDE X 89" TALL X 48" DEEP
4. HEAT REJECTION TO WATER:

PEAK HEAT REJECTION = 36,860 Btu/hr = 10.8 kWh

AVERAGE HEAT REJECTION = 19,500 Btu/hr = 5.7 kWh
5. AMBIENT OPERATING CONDITION:

TEMPERATURE = +64.5 °F TO +86 °F (+18 °C TO +30 °C)

RELATIVE HUMIDITY < 75%
6. (2) SHELVES INCLUDED - ADJUSTABLE BY ½" INCREMENTS

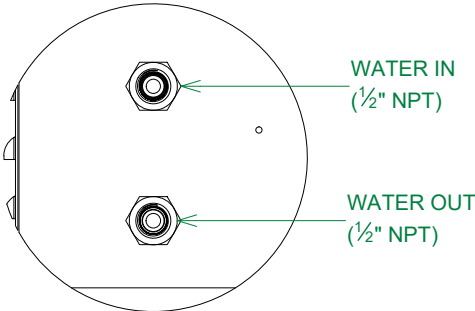
WATER REQUIREMENTS

1. PRESSURE DIFFERENTIAL ≈ 20 psi (1.38 bar)
2. WATER TEMPERATURE ≤ (60 °F/16 °C)

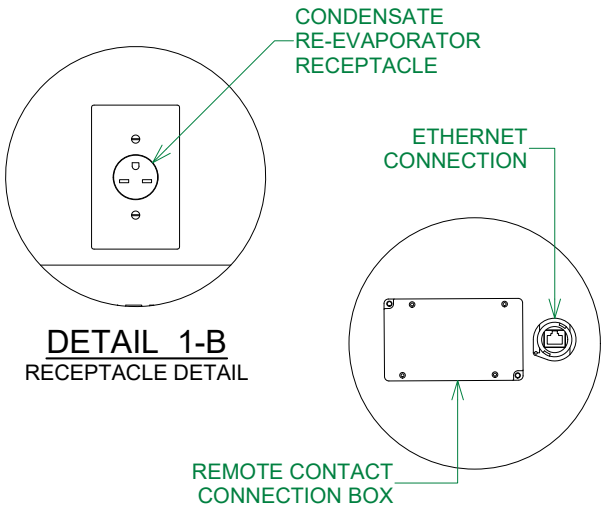
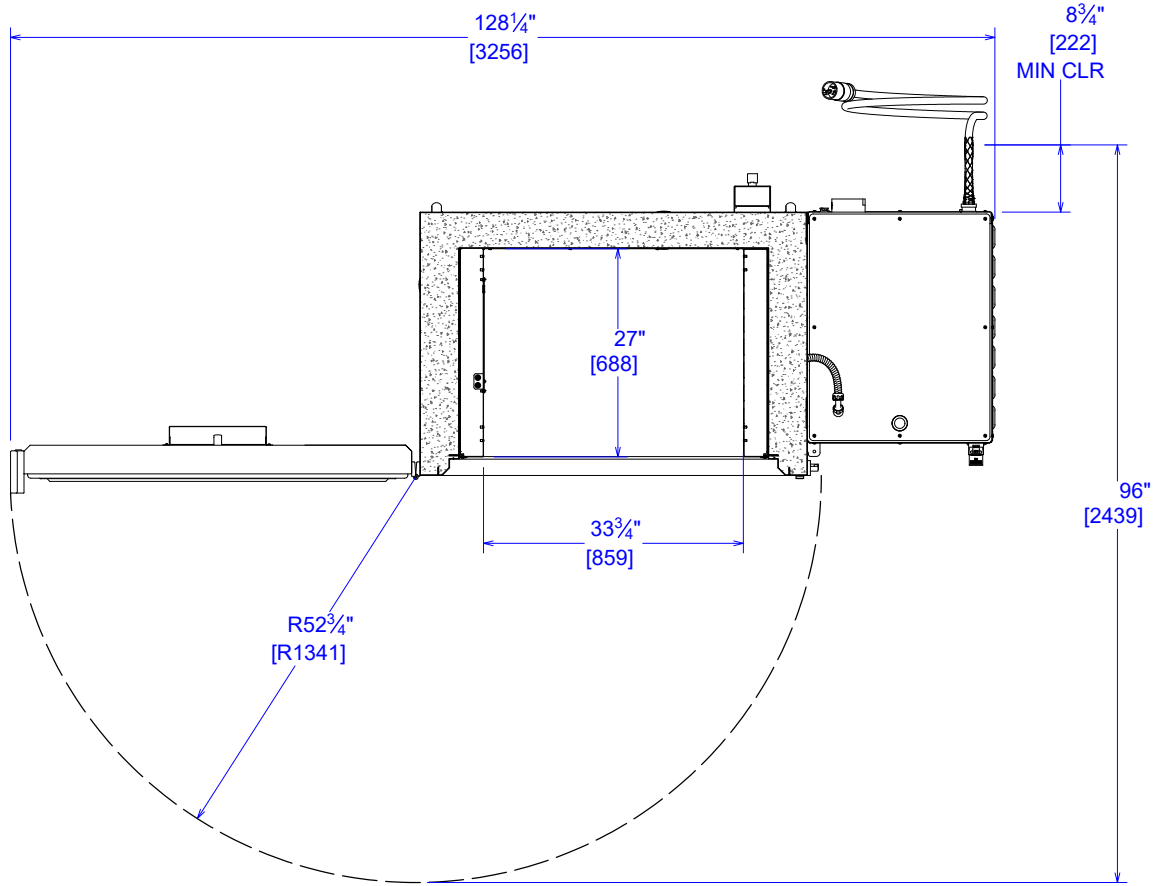
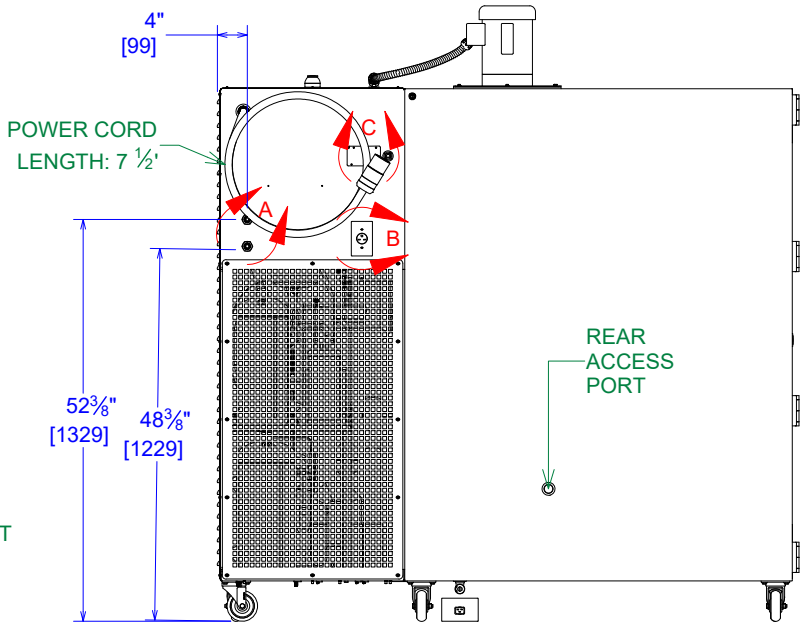
WATER SUPPLY FLOW RATE = 6 gpm (22.7 LPM)
3. WATER CONNECTIONS ARE ½" FNPT

FOR 4105 UNITS, A ½" MNPT x M20 x 1.5

FEMALE ADAPTER IS PROVIDED
4. FLEXIBLE HIGH PRESSURE HOSE REQUIRED



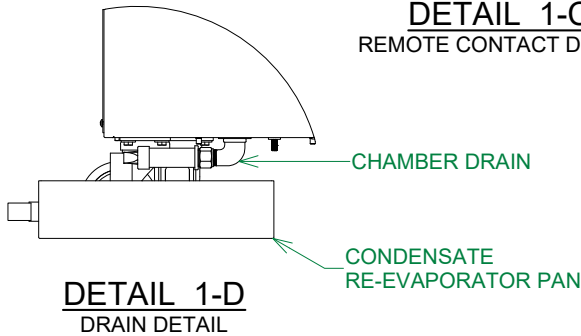
DETAIL 1-A
WATER CONNECTION DETAIL



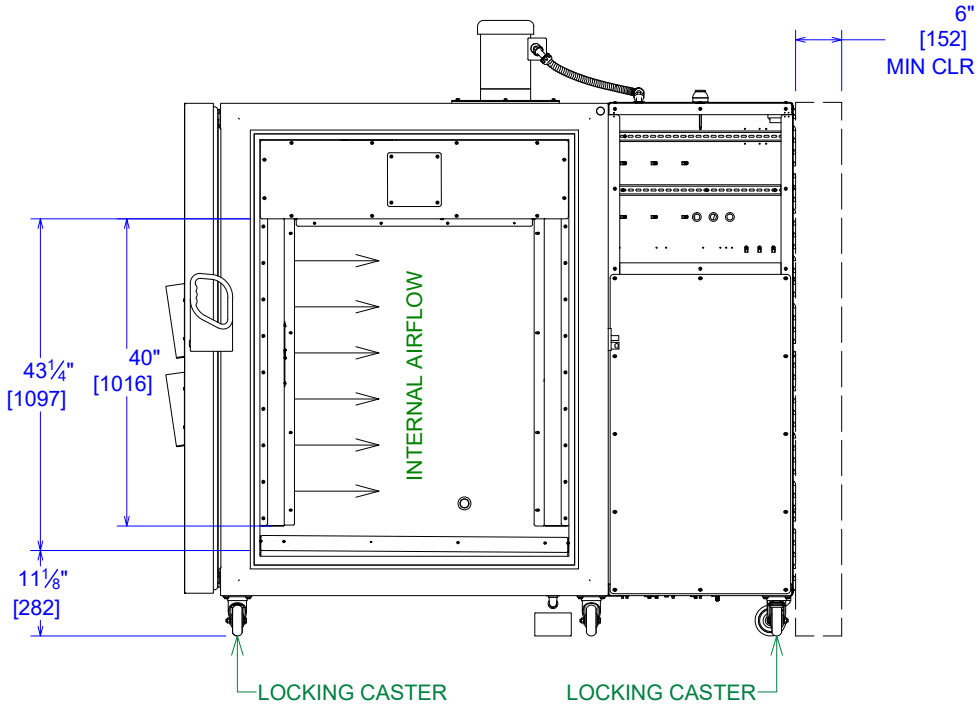
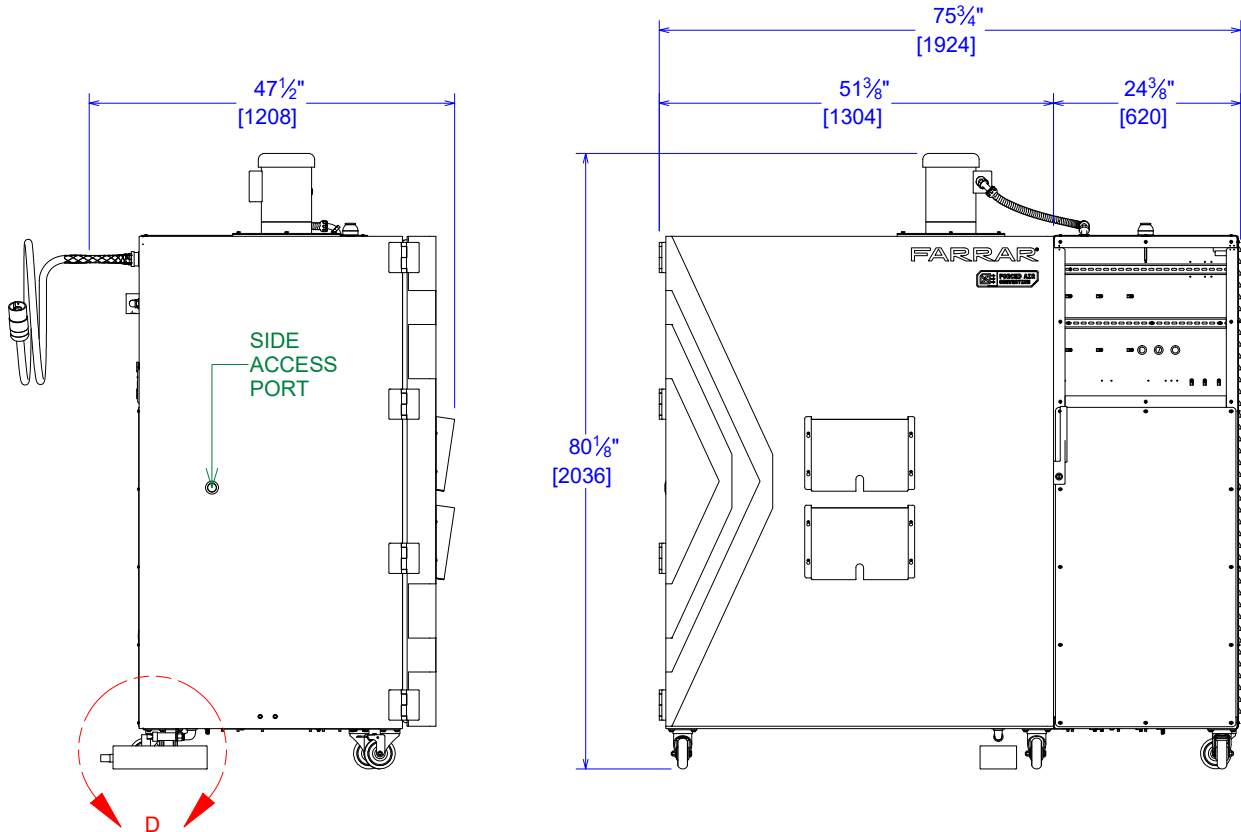
DETAIL 1-B
RECEPTACLE DETAIL



DETAIL 1-C
REMOTE CONTACT DETAIL



DETAIL 1-D
DRAIN DETAIL



POWER REQUIREMENTS					TOLERANCES .x ±.1 .xx ±.03 .xxx ±.015 .xxxx ±.0005 ANGLE ±1° FRACTIONAL ±1/16 DIMENSIONS ARE IN INCHES UNLESS OTHERWISE SPECIFIED	THIS DOCUMENT CONTAINS PROPRIETARY INFORMATION AND SUCH IS NOT TO BE DISCLOSED TO OTHERS FOR ANY PURPOSE OR USED FOR MANUFACTURING PURPOSES WITHOUT THE WRITTEN PERMISSION OF TRANE TECHNOLOGIES. FARRAR® 30765 OH-7 MARIETTA, OH 45750 ph. 740.374.8300 fx. 740.374.8310	SPECIFICATIONS, 4000-LC, WATER-COOLED		
WATER-COOLED	ELECTRICAL REQUIREMENTS	BREAKER SIZE	PLUG SPEC	MATING RECEPTACLE SPEC			SIZE B	DWG NO 4000-LC, WATER-COOLED	REV 6
4102	208 VAC - 3 PHASE - 60 HZ 31 FLA: 3 WIRES + GND	40A	HUBBELL CS8365C LOCKING-50A 3P-250VAC 3P4W GND	HUBBELL - CS8369			DRAWN BY B. IRWIN DRAWN DATE 8/8/2025		
4105 (EUROPE)	400 VAC - 3 PHASE - 50HZ 24 FLA: 4 WIRES + GND	30A	IEC60309 6 HOUR PLUG, 4P 5W, 415VAC, 32A	30A 6 HOUR 4P 5W			APPROVED BY J. HESSLER APPROVAL DATE 8/8/2025		
							REFERENCE N/A SCALE 1 / 25 SHEET 1 OF 1		