

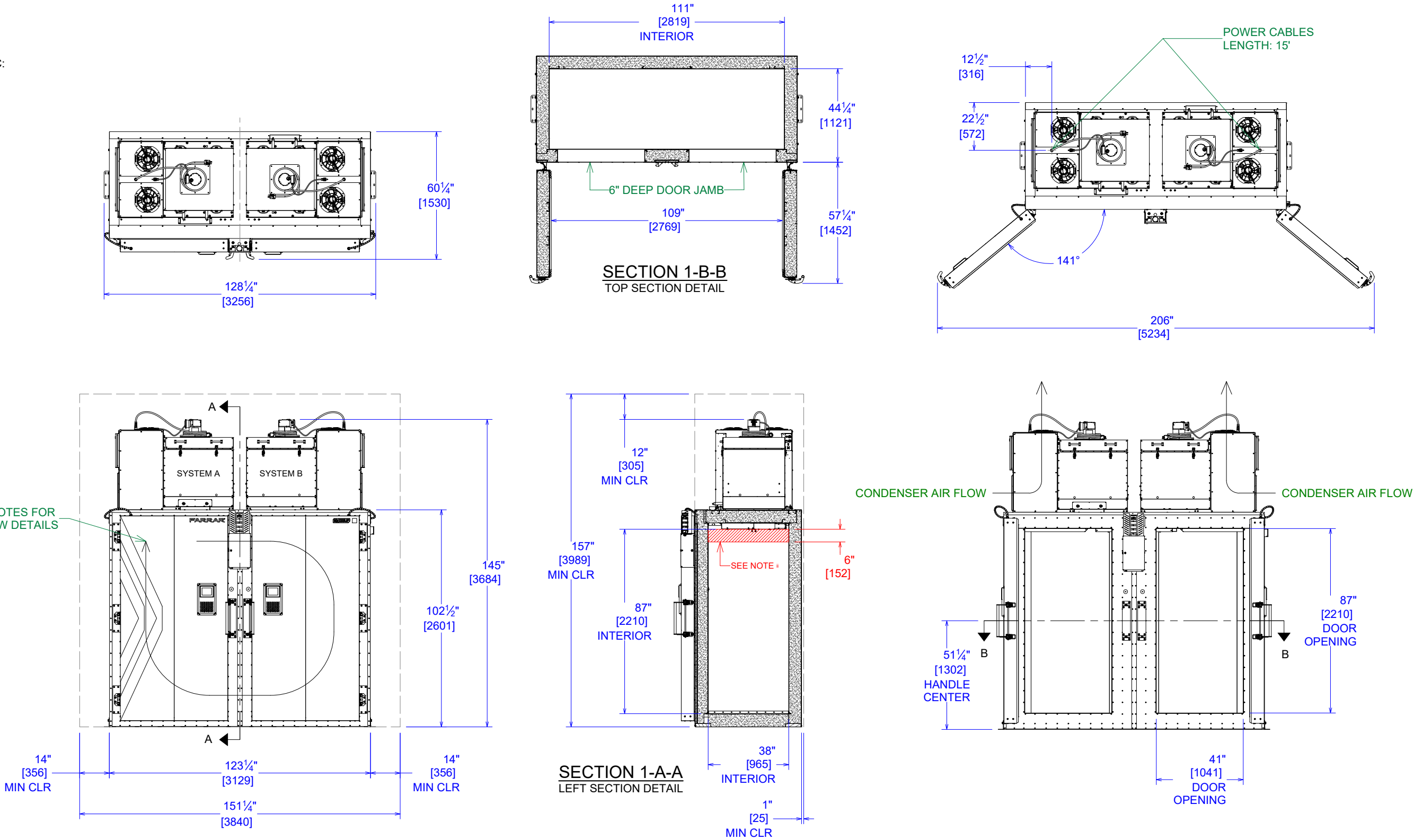
GENERAL NOTES:

1. THE INTERNAL FORCED AIR CIRCULATION SHOWN IS FOR SYSTEM "A" (CLOCKWISE). SYSTEM "B" (COUNTER CLOCKWISE) IS A MIRROR TO SYSTEM "A".
2. HEAT REJECTION TO ATMOSPHERE @ -80 °C:
- MAXIMUM i
- = 28,000 Btu/hr (8.2 kW) TO AMBIENT
- MINIMUM
- NORMAL OPERATION, 1 SYSTEM @ 75-80%
- = 12,000 Btu/hr (3.5 kW) TO AMBIENT
- AVERAGE - NORMAL OPERATION, 1-2 DOOR OPENING/hr, 1 SYSTEM DEFROST
- = 14,000 Btu/hr (4.1 kW) TO AMBIENT
3. INCLUDES (2) FLOOR ANCHOR BRACKETS. (TO BE INSTALLED BY CUSTOMER)

MATERIAL HANDLING:

1. STANDARD OPTION INCLUDES (6) ADJUSTABLE SOLID 304 STAINLESS STEEL SHELVES AND (6) INNER DOORS TO MINIMIZE AIR EXCHANGE WHEN INTERFACING WITH PRODUCT.
2. SHELVES ARE ADJUSTABLE BY 1" (25.4 mm).
3. OTHER OPTIONS INCLUDE MODULAR CART SYSTEM AND STAINLESS STEEL SKID OPTION FOR FORKLIFTS.

SEE NOTES FOR AIRFLOW DETAILS



i TOTAL FOR BOTH REFRIGERATION SYSTEMS.
ii FOR BEST PERFORMANCE, DO NOT STORE PRODUCT IN THIS AREA.

POWER REQUIREMENTS					TOLERANCES	THIS DOCUMENT CONTAINS PROPRIETARY INFORMATION AND SUCH IS NOT TO BE DISCLOSED TO OTHERS FOR ANY PURPOSE OR USED FOR MANUFACTURING PURPOSES WITHOUT THE WRITTEN PERMISSION OF TRANE TECHNOLOGIES.	SPECIFICATIONS, ULC-190, AIR-COOLED		
UNIT	ELECTRICAL REQUIREMNTS	BREAKER SIZE	PLUG SPEC	RECEPTACLE SPEC			SIZE	DWG NO	REV
ULC (DOMESTIC)	208/240 VAC - 1 PHASE - 60 HZ 24 FLA: 2 WIRES + GND	30A	NEMA L6-30P, LOCKING PLUG	L6-30P FEMALE RECEPTACLE/CONNECTOR, 2 L, 1GND			B	ULC-190, AIR-COOLED	4
ULCi (INTERNATIONAL)	230 VAC - 1 PHASE - 50HZ 24 FLA: 2 WIRES + GND	32A	IEC 60309 6 HOUR PLUG, 2P 3W	IEC 60309- 6 HOUR RECEPTACLE/CONNECTOR, 2P 3W (1L, 1N, 1GND)			DRAWN BY B. IRWIN	DRAWN DATE 8/18/2025	
					ANGLE ±1° FRACTIONAL ±1/16		APPROVED BY J. HESSLER	APPROVAL DATE 8/18/2025	
					DIMENSIONS ARE IN INCHES UNLESS OTHERWISE SPECIFIED		REFERENCE N/A	SCALE 1/48	SHEET 1 OF 1
						14400 BERGEN BLVD NOBLESVILLE, IN 46060 contactfarrar@tranetechnologies.com (800) 424-7197 (740) 374-8300			