

GENERAL NOTES:

1. THE INTERNAL FORCED AIR CIRCULATION SHOWN IS FOR SYSTEM "A" (CLOCKWISE). SYSTEM "B" (COUNTER CLOCKWISE) IS A MIRROR TO SYSTEM "A".
2. HEAT REJECTION TO ATMOSPHERE @ -80 °C:
- MAXIMUM i
- = 28,000 Btu/hr (8.2 kW) TO WATER
  - = 1800 Btu/hr (0.52 kW) TO AMBIENT
- MINIMUM
- NORMAL OPERATION, 1 SYSTEM @ 75-80%
- = 12,000 Btu/hr (3.5 kW) TO WATER
  - < 900 Btu/hr (0.26 kW) TO AMBIENT
- AVERAGE - NORMAL OPERATION, 1-2 DOOR OPENING/hr, 1 SYSTEM DEFROST
- = 14,000 Btu/hr (4.1 kW) TO WATER
  - = 1,000 Btu/hr (0.29 kW) TO AMBIENT
3. INCLUDES (2) FLOOR ANCHOR BRACKETS. (TO BE INSTALLED BY CUSTOMER)

WATER REQUIREMENTS:

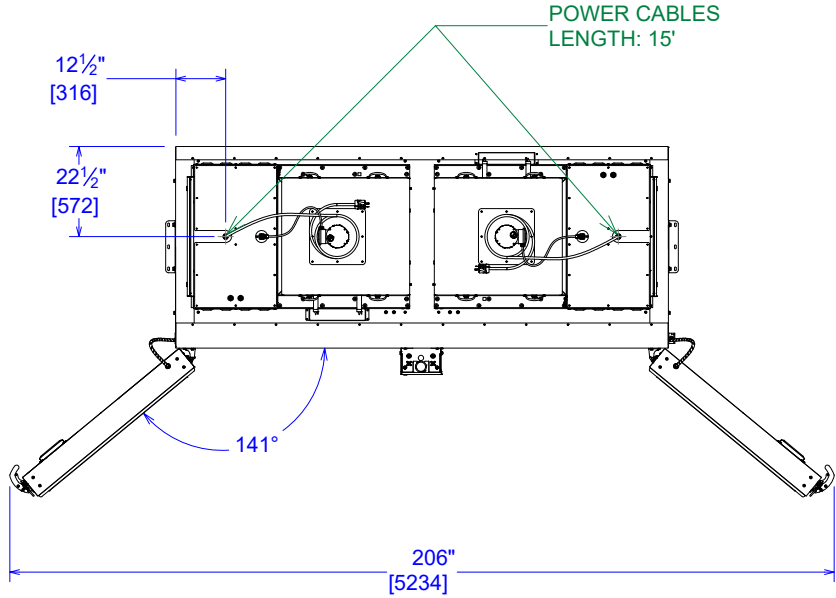
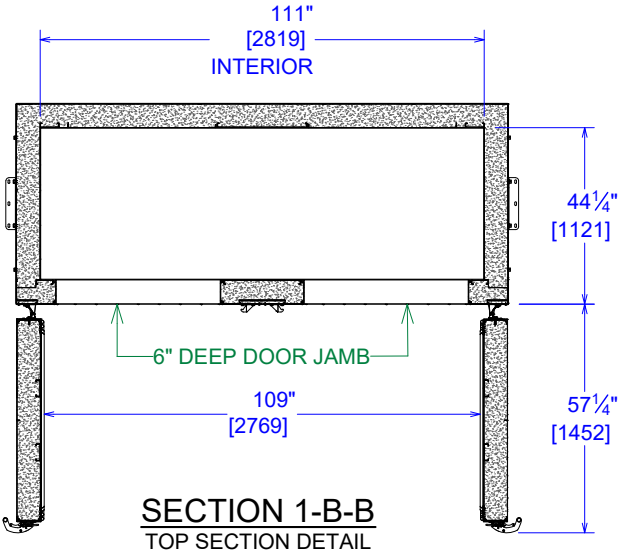
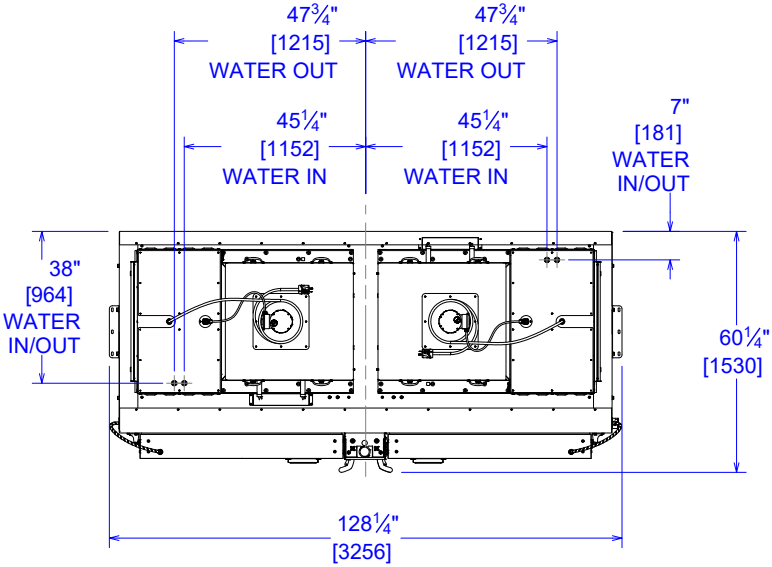
PRESSURE DIFFERENTIAL ≈ 20 psi (1.4 bar)

1. CHILLED WATER i
- WATER TEMPERATURE ≤ 10 °C
  - MAXIMUM FLOW RATE = 3.5 gpm (14 LPM)
  - AVERAGE FLOW RATE = 2.0 gpm (8 LPM)
2. WATER CONNECTIONS ARE ½" FNPT.
- FOR ULCi UNITS, A ½" MNPT x M20 x 1.5 FEMALE ADAPTER IS PROVIDED.

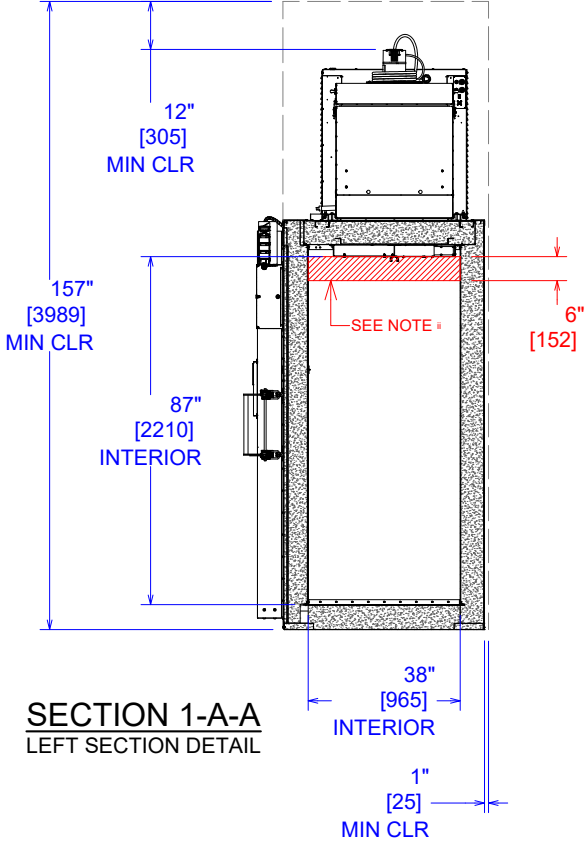
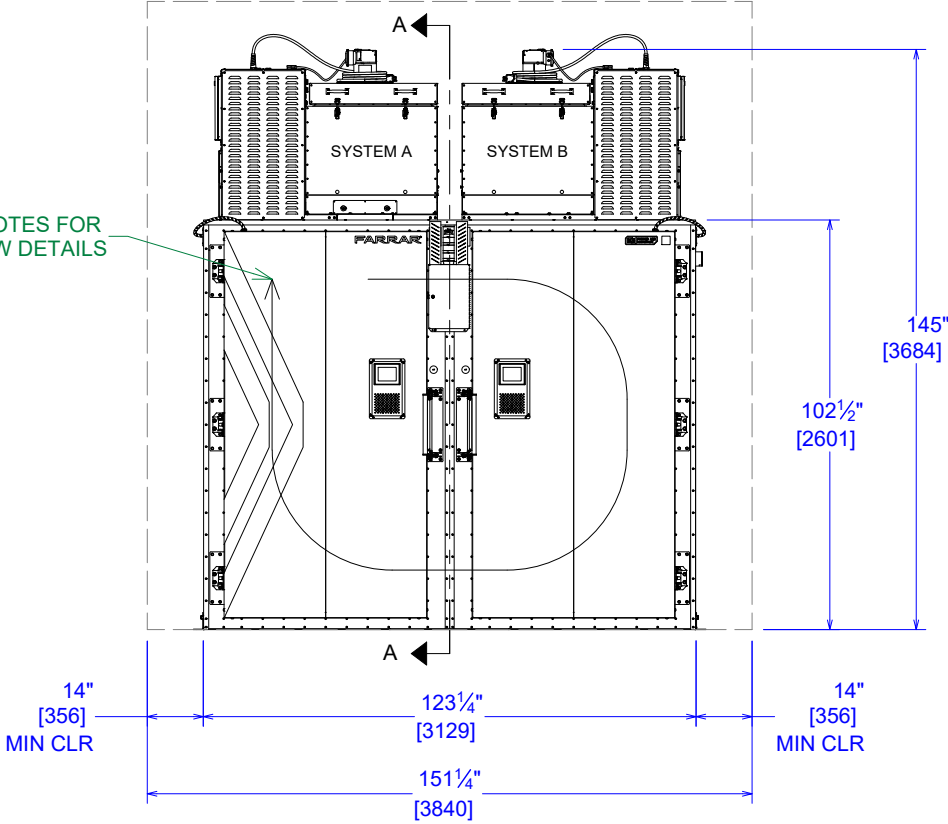
MATERIAL HANDLING:

1. STANDARD OPTION INCLUDES (6) ADJUSTABLE SOLID 304 STAINLESS STEEL SHELVES AND (6) INNER DOORS TO MINIMIZE AIR EXCHANGE WHEN INTERFACING WITH PRODUCT.
2. SHELVES ARE ADJUSTABLE BY 1" (25.4 mm).
3. OTHER OPTIONS INCLUDE MODULAR CART SYSTEM AND STAINLESS STEEL SKID OPTION FOR FORKLIFTS.

i TOTAL FOR BOTH REFRIGERATION SYSTEMS.  
ii FOR BEST PERFORMANCE, DO NOT STORE PRODUCT IN THIS AREA.

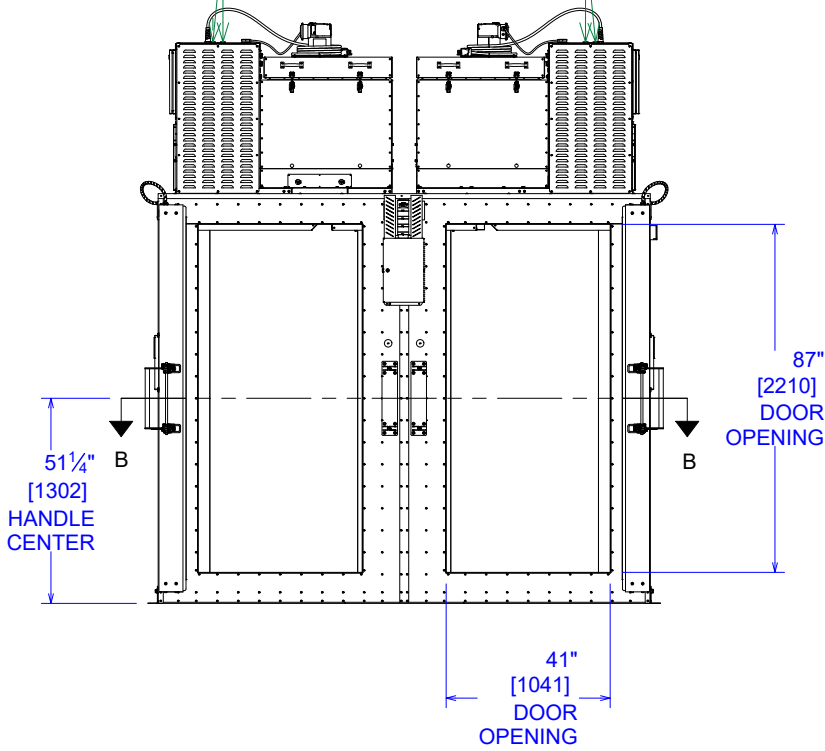


SEE NOTES FOR AIRFLOW DETAILS



½" FNPT CONNECTIONS

½" FNPT CONNECTIONS



| POWER REQUIREMENTS   |  |              |                                 |  | TOLERANCES  | THIS DOCUMENT CONTAINS PROPRIETARY INFORMATION AND SUCH IS NOT TO BE DISCLOSED TO OTHERS FOR ANY PURPOSE OR USED FOR MANUFACTURING PURPOSES WITHOUT THE WRITTEN PERMISSION OF TRANE TECHNOLOGIES. | SPECIFICATIONS, ULC-190, WATER-COOLED |                            |              |
|----------------------|--|--------------|---------------------------------|--|---|---|---------------------------------------|----------------------------|--------------|
| UNIT                 | ELECTRICAL REQUIREMNTS                                 | BREAKER SIZE | PLUG SPEC                       | RECEPTACLE SPEC  |   |   | SIZE                                  | DWG NO                     | REV          |
| ULC (DOMESTIC)       | 208/240 VAC - 1 PHASE - 60 HZ<br>24 FLA: 2 WIRES + GND | 30A          | NEMA L6-30P, LOCKING PLUG       | L6-30P FEMALE RECEPTACLE/CONNECTOR, 2 L, 1GND                |   |   | B                                     | ULC-190, WATER-COOLED      | 4            |
| ULCi (INTERNATIONAL) | 230 VAC - 1 PHASE - 50HZ<br>24 FLA: 2 WIRES + GND      | 32A          | IEC 60309<br>6 HOUR PLUG, 2P 3W | IEC 60309- 6 HOUR RECEPTACLE/CONNECTOR, 2P 3W (1L, 1N, 1GND) |   |   | DRAWN BY<br>B. IRWIN                  | DRAWN DATE<br>8/18/2025    |              |
|                      |  |              |                                 |  | ANGLE ±1°<br>FRACTIONAL ±1/16                                 |   | APPROVED BY<br>J. HESSLER             | APPROVAL DATE<br>8/18/2025 |              |
|                      |  |              |                                 |  | DIMENSIONS ARE IN <b>INCHES</b><br>UNLESS OTHERWISE SPECIFIED |   | REFERENCE<br>N/A                      | SCALE<br>1/48              | SHEET 1 OF 1 |
|                      |  |              |                                 |  |   | 14400 BERGEN BLVD   NOBLESVILLE, IN   46060<br>contactfarrar@tranetechnologies.com   (800) 424-7197   (740) 374-8300  |                                       |                            |              |