

GENERAL NOTES:

1. THE INTERNAL FORCED AIR CIRCULATION SHOWN IS FOR SYSTEM "A" (CLOCKWISE). SYSTEM "B" (COUNTER CLOCKWISE) IS A MIRROR TO SYSTEM "A".
2. HEAT REJECTION TO ATMOSPHERE @ -80 °C:  
MAXIMUM i  
= 28,000 Btu/hr (8.2 kW) TO WATER  
= 1800 Btu/hr (0.52 kW) TO AMBIENT  
MINIMUM  
NORMAL OPERATION, 1 SYSTEM @ 75-80%  
= 12,000 Btu/hr (3.5 kW) TO WATER  
< 900 Btu/hr (0.26 kW) TO AMBIENT  
AVERAGE - NORMAL OPERATION, 1-2 DOOR OPENING/hr, 1 SYSTEM DEFROST  
= 14,000 Btu/hr (4.1 kW) TO WATER  
= 1,000 Btu/hr (0.29 kW) TO AMBIENT
3. INCLUDES (2) FLOOR ANCHOR BRACKETS. (TO BE INSTALLED BY CUSTOMER)

WATER REQUIREMENTS:

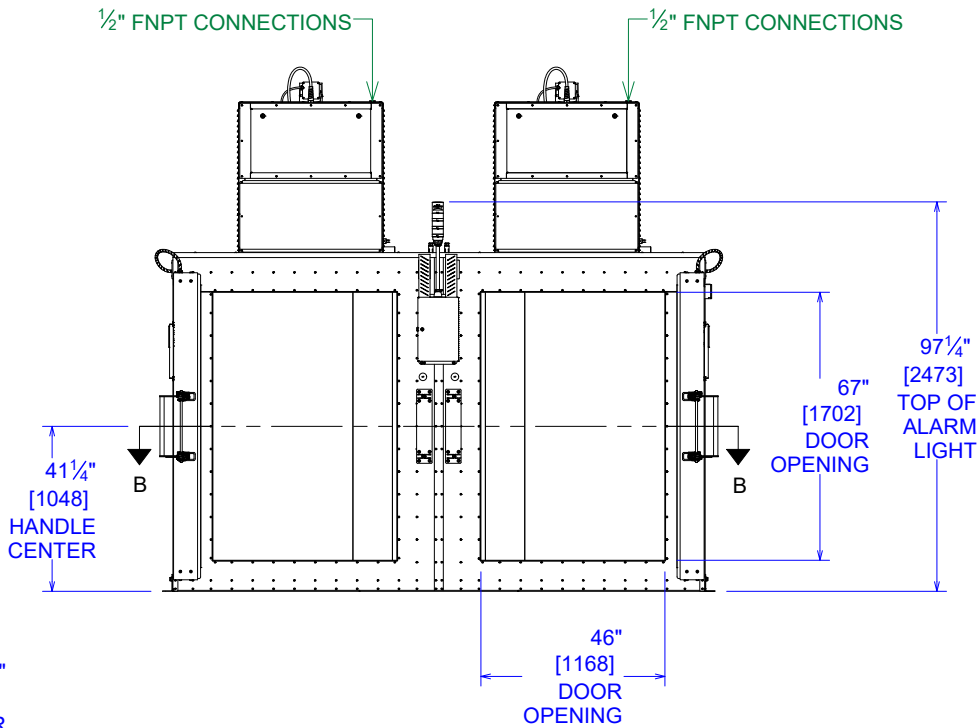
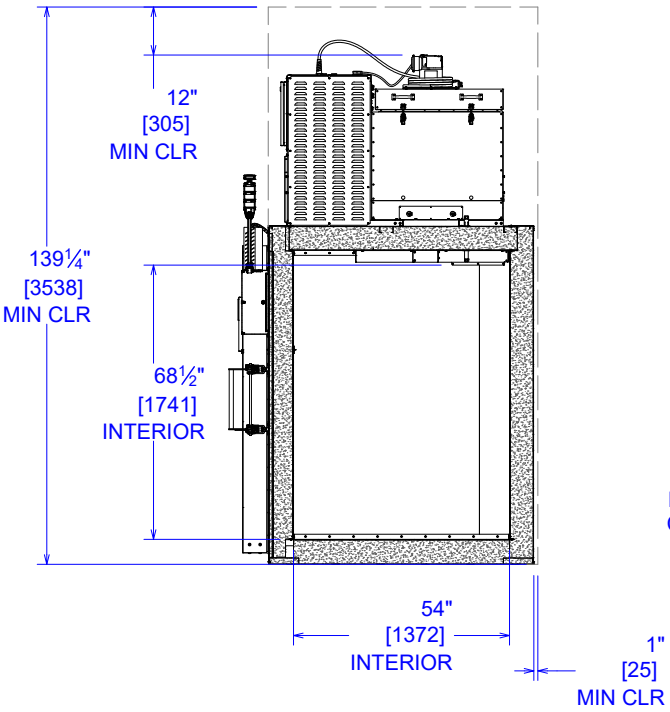
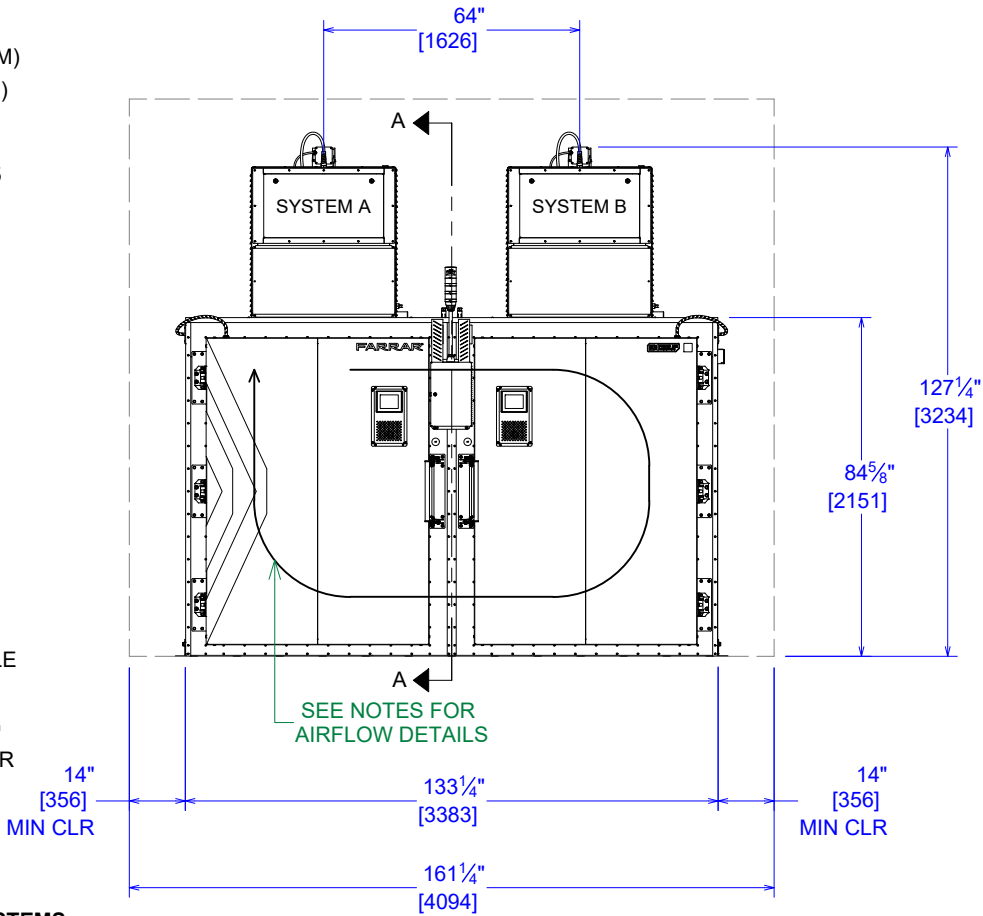
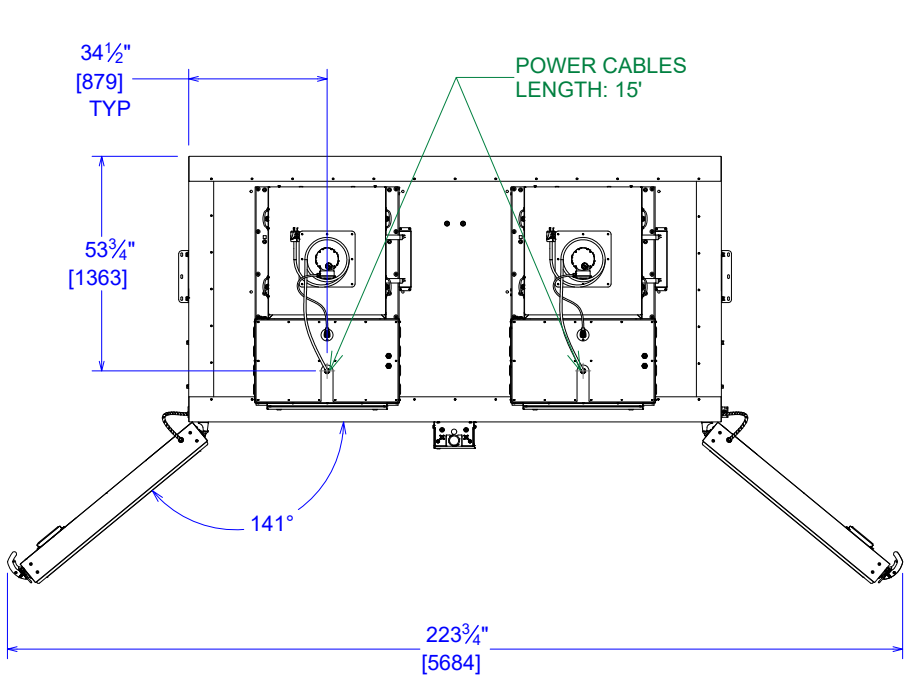
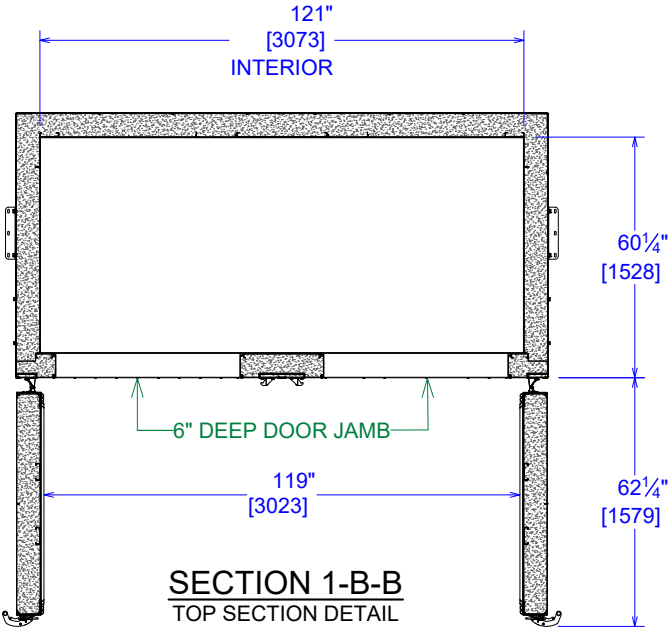
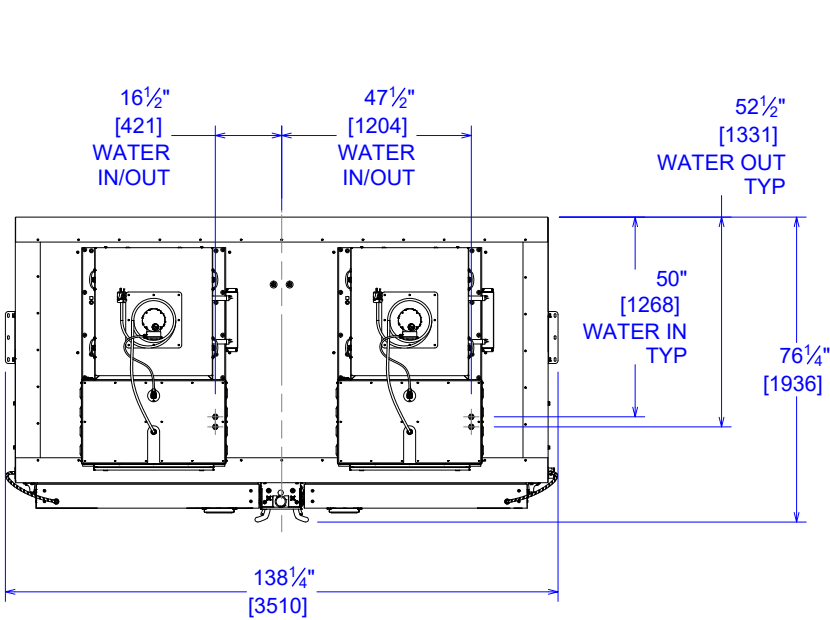
PRESSURE DIFFERENTIAL ≈ 20 psi (1.4 bar)

1. CHILLED WATER i  
WATER TEMPERATURE ≤ 10 °C  
MAXIMUM FLOW RATE = 3.5 gpm (14 LPM)  
AVERAGE FLOW RATE = 2.0 gpm (8 LPM)
2. WATER CONNECTIONS ARE ½" FNPT.  
  
FOR ULCi UNITS, A ½" MNPT x M20 x 1.5 FEMALE ADAPTER IS PROVIDED.

MATERIAL HANDLING:

1. CART SYSTEM OPTION:  
FEATURES (4) STAINLESS STEEL PRODUCT CARTS, (4) GUIDES, AND (2) FLOOR INSERTS. CARTS INCLUDE (6) SHELVES WITH SWIVEL-LOCKING CASTERS, FORK POCKETS AND CANE PIN FOR SECURING IN FREEZER.
2. DRAWER SYSTEM OPTION:  
FEATURES (2) STAINLESS STEEL RACKING SYSTEMS WITH (24) SLIDING DRAWER PANS AND (6) TAILGATE-STYLE INNER DOORS EACH.
3. OTHER OPTIONS INCLUDE A SHELVING SYSTEM AND BIORACKING SYSTEM FOR STANDARD CRYORACKS.

i TOTAL FOR BOTH REFRIGERATION SYSTEMS.



POWER REQUIREMENTS					TOLERANCES  .x ±.1 .xx ±.03 .xxx ±.015 .xxxx ±.0005  ANGLE ±1° FRACTIONAL ±1/16  DIMENSIONS ARE IN <b>INCHES</b> UNLESS OTHERWISE SPECIFIED	THIS DOCUMENT CONTAINS PROPRIETARY INFORMATION AND SUCH IS NOT TO BE DISCLOSED TO OTHERS FOR ANY PURPOSE OR USED FOR MANUFACTURING PURPOSES WITHOUT THE WRITTEN PERMISSION OF TRANE TECHNOLOGIES.	SPECIFICATIONS, ULC-259, WATER-COOLED		
UNIT	ELECTRICAL REQUIREMNTS	BREAKER SIZE	PLUG SPEC	RECEPTACLE SPEC			SIZE	DWG NO	REV
ULC (DOMESTIC)	208/240 VAC - 1 PHASE - 60 HZ 24 FLA: 2 WIRES + GND	30A	NEMA L6-30P, LOCKING PLUG	L6-30P FEMALE RECEPTACLE/CONNECTOR, 2 L, 1GND			B	ULC-259, WATER-COOLED	3
ULCi (INTERNATIONAL)	230 VAC - 1 PHASE - 50HZ 24 FLA: 2 WIRES + GND	32A	IEC 60309 6 HOUR PLUG, 2P 3W	IEC 60309- 6 HOUR RECEPTACLE/CONNECTOR, 2P 3W (1L, 1N, 1GND)			DRAWN BY B. IRWIN	DRAWN DATE 8/18/2025	
							APPROVED BY J. HESSLER	APPROVAL DATE 8/18/2025	
							REFERENCE N/A	SCALE 1 / 48	SHEET 1 OF 1