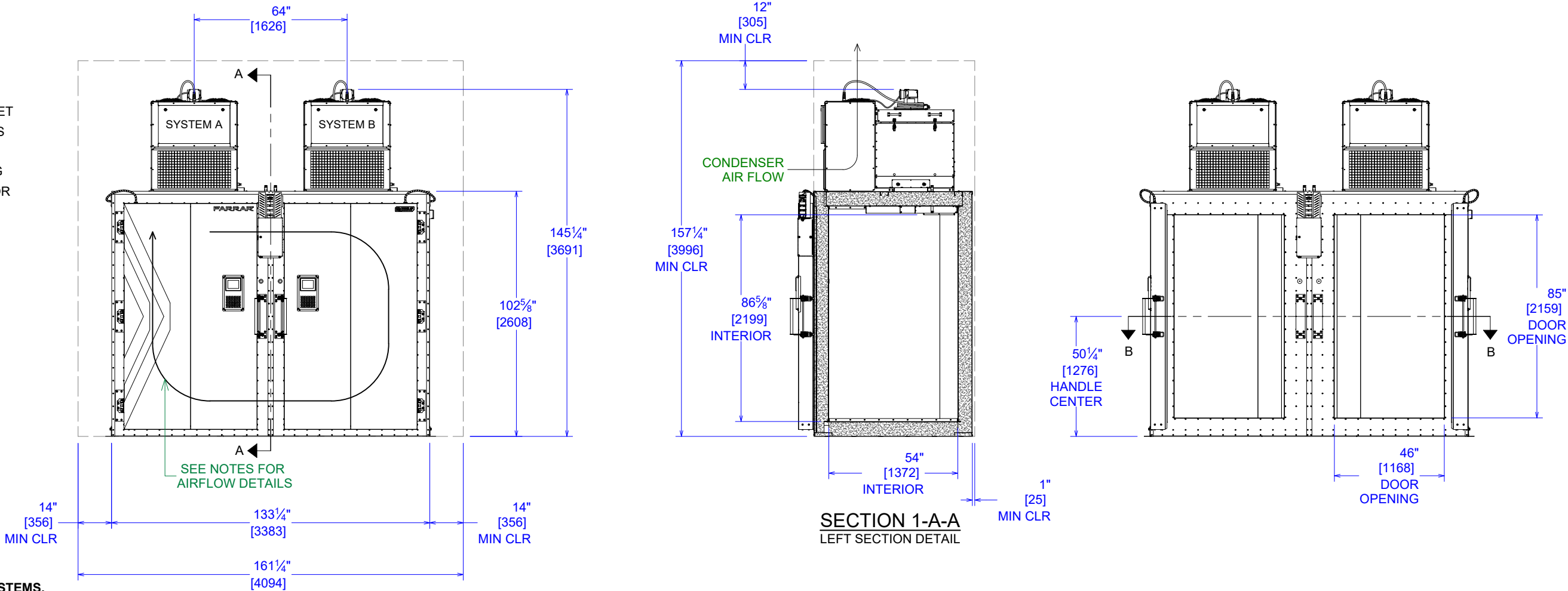
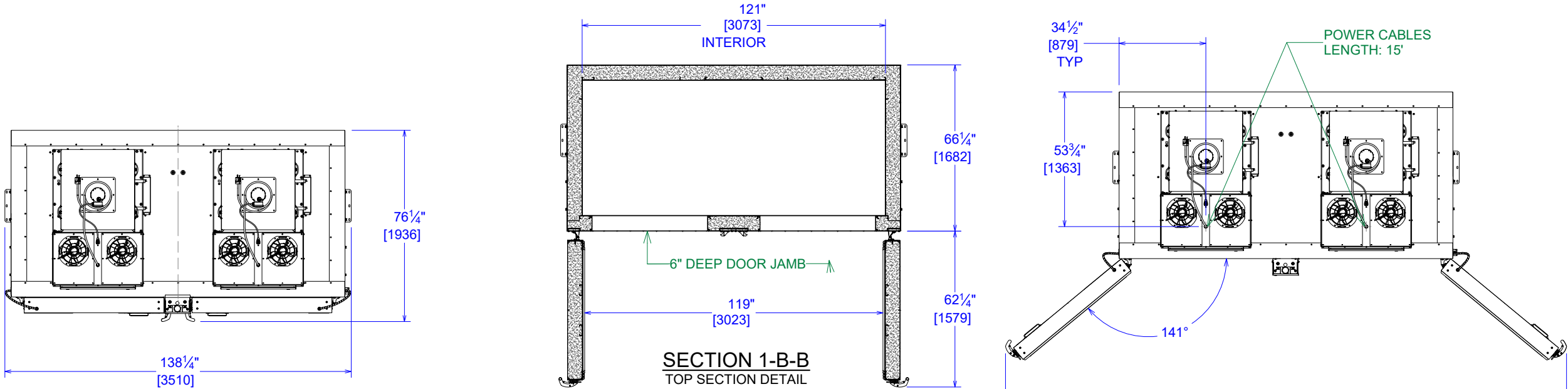


GENERAL NOTES:

1. THE INTERNAL FORCED AIR CIRCULATION SHOWN IS FOR SYSTEM "A" (CLOCKWISE). SYSTEM "B" (COUNTER CLOCKWISE) IS A MIRROR TO SYSTEM "A".
2. HEAT REJECTION TO ATMOSPHERE @ -80 °C:
- MAXIMUM i
- = 28,000 Btu/hr (8.2 kW) TO AMBIENT
- MINIMUM
- NORMAL OPERATION, 1 SYSTEM @ 75-80%
- = 12,000 Btu/hr (3.5 kW) TO AMBIENT
- AVERAGE - NORMAL OPERATION, 1-2 DOOR OPENING/hr, 1 SYSTEM DEFROST
- = 14,000 Btu/hr (4.1 kW) TO AMBIENT
3. INCLUDES (2) FLOOR ANCHOR BRACKETS. (TO BE INSTALLED BY CUSTOMER)

MATERIAL HANDLING:

1. CART SYSTEM OPTION:
- FEATURES (4) STAINLESS STEEL PRODUCT CARTS, (4) GUIDES, AND (2) FLOOR INSERTS. CARTS INCLUDE (6) SHELVES WITH SWIVEL-LOCKING CASTERS, FORK POCKETS AND CANE PIN FOR SECURING IN FREEZER.
2. PALLET RACK OPTION:
- FEATURES (1) STAINLESS STEEL PALLET RACK WITH (1) SHELF. EXTRA SHELVES AVAILABLE.
3. OTHER OPTIONS INCLUDE A SHELVING SYSTEM AND BIORACKING SYSTEM FOR STANDARD CRYORACKS.



i TOTAL FOR BOTH REFRIGERATION SYSTEMS.

| POWER REQUIREMENTS   |                                                        |              |                                 |                                                              | TOLERANCES                                             | THIS DOCUMENT CONTAINS PROPRIETARY INFORMATION AND SUCH IS NOT TO BE DISCLOSED TO OTHERS FOR ANY PURPOSE OR USED FOR MANUFACTURING PURPOSES WITHOUT THE WRITTEN PERMISSION OF TRANE TECHNOLOGIES. | SPECIFICATIONS, ULC-328, AIR-COOLED |                            |              |
|----------------------|--------------------------------------------------------|--------------|---------------------------------|--------------------------------------------------------------|--------------------------------------------------------|---------------------------------------------------------------------------------------------------------------------------------------------------------------------------------------------------|-------------------------------------|----------------------------|--------------|
| UNIT                 | ELECTRICAL REQUIREMNTS                                 | BREAKER SIZE | PLUG SPEC                       | RECEPTACLE SPEC                                              |                                                        |                                                                                                                                                                                                   | SIZE                                | DWG NO                     | REV          |
| ULC (DOMESTIC)       | 208/240 VAC - 1 PHASE - 60 HZ<br>24 FLA: 2 WIRES + GND | 30A          | NEMA L6-30P, LOCKING PLUG       | L6-30P FEMALE RECEPTACLE/CONNECTOR, 2 L, 1GND                |                                                        |                                                                                                                                                                                                   | B                                   | ULC-328, AIR-COOLED        | 2            |
| ULCi (INTERNATIONAL) | 230 VAC - 1 PHASE - 50HZ<br>24 FLA: 2 WIRES + GND      | 32A          | IEC 60309<br>6 HOUR PLUG, 2P 3W | IEC 60309- 6 HOUR RECEPTACLE/CONNECTOR, 2P 3W (1L, 1N, 1GND) |                                                        |                                                                                                                                                                                                   | DRAWN BY<br>B. IRWIN                | DRAWN DATE<br>8/18/2025    |              |
|                      |                                                        |              |                                 |                                                              | ANGLE ±1°<br>FRACTIONAL ±1/16                          |                                                                                                                                                                                                   | APPROVED BY<br>J. HESSLER           | APPROVAL DATE<br>8/18/2025 |              |
|                      |                                                        |              |                                 |                                                              | DIMENSIONS ARE IN INCHES<br>UNLESS OTHERWISE SPECIFIED |                                                                                                                                                                                                   | REFERENCE<br>N/A                    | SCALE<br>1 / 48            | SHEET 1 OF 1 |