



The International Centre for
Evaluation and Development



2025 ANNUAL REPORT

TABLE OF CONTENTS



Executive Summary



Research, Evidence Generation, and Policy



Capacity Building



Evidence Generation



**Technical Support to Research and Research
Institutions**



Policy Influence



Our Financials



Acknowledgment of Partners

MESSAGE FROM THE PRESIDENT & CEO

In a year marked by profound global uncertainty and deepening development challenges, evidence has never mattered more. Across Africa, decision-makers are grappling with complex and interconnected issues-climate change, economic exclusion, democratic resilience, and social inequality-that demand solutions grounded in credible, locally relevant knowledge. In 2025, the International Centre for Evaluation and Development (ICED) remained steadfast in its mission to bridge the gap between research and action, strengthening Africa's evidence ecosystem through rigorous research, capacity strengthening, and sustained engagement with policymakers and practitioners.

This Annual Report reflects ICED's continued commitment to advancing evidence that informs policy and practice at scale. Guided by our integrated framework-spanning research and evidence generation, monitoring, evaluation and learning, knowledge translation, capacity strengthening, policy engagement, and partnerships - we expanded our reach across

countries, sectors, and institutions. From advancing climate adaptation evidence and gender-responsive governance to supporting national evaluation systems and convening Africa's flagship Evidence to Action Conference, our work in 2025 reinforced a central conviction: evidence is most powerful when it is locally led, accessible, and embedded in decision-making processes.

The year also marked a moment of governance continuity and renewal for ICED. In 2025, Dr. Julius Muia assumed the role of Board Chair, while Dr. Namanga Ngongi continues to serve as Board Chair Emeritus, ensuring continuity and strategic guidance. I extend my sincere appreciation to our Board, staff, partners, and communities of practice whose collaboration makes our work possible. As we look ahead, ICED remains committed to learning, innovation, and partnership - working together to ensure that evidence drives meaningful and lasting change across Africa.



Dr. David Sarfo Ameyaw

President, CEO, & Board Secretary

MESSAGE FROM THE BOARD CHAIR

On behalf of the ICED Board, I am pleased to present the 2025 Annual Report, which reflects a year of significant achievements in strengthening Africa's evidence ecosystem. Through rigorous research, capacity building, and strategic partnerships, ICED has continued to ensure that evidence informs policies and programs that promote inclusive, sustainable, and resilient development.

We are deeply grateful to our partners and donors whose trust and support make this work possible. Your investment in ICED enables the generation and use of credible evidence that drives meaningful change for communities across Africa.

As we look ahead, the Board remains committed to providing strategic guidance and oversight to ensure ICED continues delivering high-quality, locally relevant evidence that informs decisions and contributes to sustainable development across the continent.



Dr. Julius Muia

Board Chair, ICED

EXECUTIVE SUMMARY

Overview

In 2025, the International Centre for Evaluation and Development (ICED) continued to strengthen Africa's evidence ecosystem, advancing research, capacity building, and the use of evidence to inform policy and practice. Across multiple sectors including climate adaptation, governance, gender equity, financial inclusion, youth economic empowerment, and health- ICED generated actionable knowledge, built local research capacity, and fostered partnerships that ensure evidence drives inclusive and sustainable development.

Key Activities in 2025



Research & Evidence

Produced 30+ evidence products across climate, governance, and women's economic empowerment, engaging 500+ stakeholders.



Capacity Strengthening

Trained 100+ researchers in Evidence and Gap Maps (EGMs), systematic reviews, and locally led evaluation.



Policy Engagement

Convened the 10th E2A Conference (512 delegates, 30 countries) and supported evidence use with governments across Africa.



Partnerships

Strengthened collaborations, including leading an ICED consortium selected as a Mastercard Foundation Impact Partner Organization (IPO).

Turning Evidence into Action

In 2025, ICED reinforced its commitment to locally led, policy-relevant, and inclusive research, ensuring evidence drives meaningful change across Africa. By integrating research, capacity building, knowledge translation, and strategic partnerships, ICED continues to transform insights into actionable solutions that improve lives and strengthen institutions continentwide.

Highlights and Impact



Delivered 3 Evidence Gap Maps informing climate change, inclusive governance, and women's economic empowerment.



Built research and evaluation capacity across 8 African countries.



Generated early evidence on youth-led indigenous enterprises in East Africa.



Expanded evidence-to-action reach through media, convenings, and knowledge products.

ICED OVERVIEW

The International Centre for Evaluation and Development (ICED) is an independent, Africa-based, and African-led not-for-profit think tank that applies innovative research, monitoring, and evaluation (M&E) in the development sector. ICED uses the outputs of research and evaluation to contribute to and enhance development outcomes and impacts, concentrating on Africa, where the need for its expertise is greatest.

Mission

To enhance the generation, synthesis and uptake of evidence for better policy and action through Innovative Research, Monitoring, and Evaluation.

Vision

A Global South where evidence drives policies and actions for the transformation of lives and livelihoods.

Core Values

01



Integrity:

Acting with integrity in in day-to-day conduct, communication and actions.

02



Accountability:

Maintaining accountability at all levels for our work, decisions and outcomes.

03



Collaboration:

Collaboration with like-minded individuals and organisations for accelerating impact.

04



Perseverance:

Perseverance mindset for success in our work and impact.

05



High Quality:

Maintaining high quality in our work and outputs.



1. RESEARCH, EVIDENCE GENERATION AND POLICY

Why Evidence Matters Now

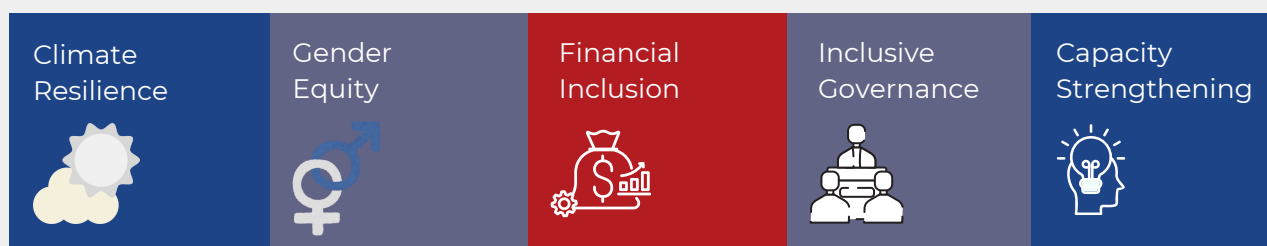
Africa faces complex and interconnected challenges—from climate change and economic exclusion to governance and democratic resilience. Addressing these challenges requires more than good intentions; it requires credible evidence, strong local capacity, and learning systems that inform action.

ICED exists to bridge the gap between research and decision-making. In 2025, ICED strengthened Africa's evidence ecosystem by generating credible knowledge, building research capacity, and supporting decision-makers across sectors.

Our Reach



Our Focus in 2025



2. CAPACITY BUILDING





2.1 Building Capacity for Evidence Use

a. Training on Systematic Review

ICED continued to invest in strengthening evidence capacity across Africa through hands-on training in systematic review methods. Through internal learning and external engagements, researchers gained practical skills to conduct and apply high-quality evidence synthesis.

In 2025, ICED trained over 150 researchers and policy makers on systematic review to strengthen evidence informed policies and practice in about 10 countries in Sub-Saharan Africa including Kenya, Ghana, Nigeria, Uganda among others. Trainings reached research teams, conference participants, and professional networks, expanding ICED's impact beyond individual projects.

Highlights

 150+ researchers and policymakers from 10+ countries trained on systematic reviews.	 Published two protocols on Inclusive Governance and Women's Economic Empowerment.	 Submitted one Evidence and Gap Map to the Campbell Collaboration.	 Disseminated over eight evidence translation products at major global conferences.
--	--	--	---

b. Training Global Evaluators on Localizing Evaluation

In 2025, ICED strengthened its global thought leadership with the invitation of its President and CEO, Dr. David Sarfo Ameyaw, to deliver a keynote at the Future of Evaluation Lecture Series. Co-hosted by Lanzhou University's Center for Evidence-based Social Science and the Global Evaluation Initiative, the forum convenes global leaders shaping the future of evaluation.

Dr. Ameyaw's keynote, "Localizing Evaluation," emphasized the importance of locally driven systems, knowledge, and priorities in advancing more relevant, inclusive, and impactful evaluation practice.



Frontier Lecture Series on Evidence-Based Social Science (No. 51)

**EVALUATION SERIES:
THE FUTURE OF EVALUATION**

LOCALISING EVALUATION

About speaker

DAVID SARFO AMEYAW
President & CEO, International Centre for Evaluation and Development

29th September 2025

4:00-5:00pm (UTC+8)

Meeting link: <https://teams.live.com/join/93489404498347p=6NpyKExQt6JEBJ054>
Meeting ID: 934 894 044 983 4 Password: Gx3bJ3

2.2 ICED Partners with ReFinD ISSER on Financial Inclusion

Through the ICED–Retail Finance Distribution (ReFinD) ISSER partnership, ICED is addressing key evidence gaps on agent network organization, vendor incentives, and expansion strategies by developing an Evidence and Gap Map (EGM) on agent networks and merchant payments in Sub-Saharan Africa and Asia. The EGM is informing policymakers and practitioners while strengthening research capacity at ISSER and among ReFinD grantees through hands-on engagement.

During this reporting period, ICED partnered with ReFinD research initiative - led by the Institute of Statistical, Social and Economic Research (ISSER) at the University of Ghana and funded by the Bill & Melinda Gates Foundation - to deliver a hands-on training on developing Evidence and Gap Maps (EGMs). These trainings contribute to advancing evidence-informed approaches for inclusive financial systems across Africa. [Read More.](#)

Collaborating with ISSER, ICED combined evidence generation with intentional capacity strengthening. Partner researchers were trained and embedded in the research process supporting long-term institutional learning.

Highlights



Approved Theory of Results Framework.



Submitted protocol for peer review.



Completed scoping reviews in Elsevier's Scopus abstract and citation database.



Built partner capacity to lead future evidence synthesis efforts.

Right:
ICED and ReFinD research team during a stakeholder workshop held in Accra in December 2025



2.3 New Strategic Partnerships in 2025

During this reporting period, ICED forged new strategic partnerships designed to bolster its efforts in championing the generation and use of evidence in the formulation of development policies and programs.

The partnerships include:



ICED Deepens Engagements with Kenya's Ministry of National Treasury and Economic Planning.

[Read More](#)



ICED and American Institutes for Research Sign Strategic MoU in Nairobi to Advance Evidence-Based Development in Africa

[Read More](#)



ICED and REC Sign Strategic Partnership MOU in Accra to Advance Evidence-Based Development Across Africa

[Read More](#)



ICED and China's Lanzhou University Sign Landmark MoU to Advance Global Evaluation Research and Capacity Development

[Read More](#)



ICED and Partnership for African Social and Governance Research (PASGR), a pan-African organization championing research excellence for governance and public policy, have entered into a strategic partnership to strengthen evidence-based development in Africa

[Read More](#)



We intensified our partnership with Kenya's State Department of Economic Planning to strengthen policy and impact



ICED-AIR signed MoU to advance evidence-based development in Africa



Members of Lanzhou University's Center for Evidence-Based Social Science, pose with Director Kehu Yang and Dr. David Sarfo Ameyaw after MoU signing.



ICED and Partnership for African Social & Governance Research signed MoU to advance evidence and policy in Africa

3. EVIDENCE GENERATION

3.1 Gender Equity and Governance

With support from Hewlett Foundation, ICED continued its efforts to design Evidence-Based Decision-Making Products (EBDMPs) and tools that can promote high utilization of evidence in the Foundation's Gender Equity and Governance (GEG) initiatives in order to assist in producing high-quality evidence that policymakers, development program professionals, and advocates can access, understand, and use.

ICED completed its work on Inclusive Governance and Women's Economic Empowerment, ensuring that the evidence generated reaches decision-makers and practitioners. Final technical reports were prepared and submitted for global publication, while tailored knowledge products made findings accessible beyond academic audiences.

These efforts reinforced ICED's commitment to gender-responsive governance and inclusive economic systems.

Highlights



Published protocols on **Inclusive Governance** and **Women's Economic Empowerment**.



Submitted final **Evidence and Gap Map** on Inclusive Governance to the Campbell Collaboration.



Disseminated over eight evidence translation products at major regional and global conferences.

Right:

ICED and ReFinD teams delivered training to researchers on Developing Evidence and Gap Maps in October 2025 at the University of Ghana (ISSER).



4. TECHNICAL SUPPORT TO RESEARCH AND RESEARCH INSTITUTIONS

4.1 Youth in Indigenous Enterprises in the Informal Economy

The Youth Futures Portfolio on Dignified and Fulfilling Work in Africa is a 34-month research initiative (February 2025–December 2027) funded by the Mastercard Foundation and implemented in Kenya, Uganda, Rwanda, Senegal, Nigeria and Ethiopia. The programme aims to generate actionable, context-specific evidence that strengthens opportunities for young people to access dignified and fulfilling work across the continent through four core pillars; 1) youth preparedness 2) indigenous enterprises in the informal economy 3) policy & industrial regulation; and 4) labour market trends and skills demand.

ISSER leads Pillar 2 of the Youth Futures programme, under which ICED serves as a core partner, implementing the Youths in Indigenous Enterprises in the Informal Economy component in Kenya, Uganda, and Rwanda, and also providing technical leadership in research coordination, MEL, and evidence synthesis. As part of the portfolio implemented by ICED, the programme was officially launched on 3th September 2025 in Kenya. The project will be launched in Uganda and Rwanda this quarter.

ICED joined other research partners, implementing partners, and members of the Youth Advisory Committee at the Annual Youth Futures Community of Practice Convening (CoP), held on 27–29 August 2025 at ISSER in Ghana. The convening converged to share lessons learned, strengthen collaboration across the four pillars, and align on programme implementation and key research outputs. Qualitative data collection has been completed in Kenya and Uganda, and draft qualitative reports have been developed. Data collection for Rwanda is complete, with data cleaning, analysis, and reporting now underway.

Emerging evidence highlights that youth-owned indigenous enterprises continue to face persistent structural barriers including, limited access to finance, restricted market opportunities, regulatory and bureaucratic constraints, and weak institutional support systems. At the same time, the findings point to clear opportunities where targeted enterprise support, improved market linkages, digital skills training, value-addition support, and strengthened cooperatives can significantly enhance youth economic participation, resilience, and long-term enterprise growth.

ICED's data analyst, Rachael Mueni (standing, dressed in red), alongside colleagues from ISSER, during a convening held at the University of Ghana on Youth Futures in Dignified and Fulfilling Work in Africa Community of Practice.



4.2 Climate Change and Adaptation

The Science for Africa Foundation (SFA Foundation), with support from the Bill & Melinda Gates Foundation, is funding the International Centre for Evaluation and Development (ICED) to develop an Evidence and Gap Map on climate change adaptation in Africa, aimed at addressing critical evidence gaps and strengthening adaptation decision-making in Sub-Saharan Africa.

ICED advanced its climate change and adaptation work in 2025 by strengthening the evidence base that informs policy and practice across Africa. The Climate Change and Adaptation Project entered its second year, delivering a comprehensive Evidence Gap Map (EGM) that highlights what is known - and where gaps remain - on climate resilience interventions.

Beyond evidence generation, ICED actively translated research into accessible knowledge products. Early findings were shared with climate experts and partners, while products such as blog spotlighted gaps in research on the blue economy, particularly fisheries. The project was featured at the Evidence 2025 Conference, creating space for dialogue with policymakers, researchers, and development practitioners.

Continuous internal learning ensured methodological rigor and adaptability throughout implementation.

Highlights



Published a Climate Change and Adaptation Evidence Gap Map

[View EGM](#)



Protocol on Climate Change Adaptation accepted for publication.



Produced and disseminated knowledge products on climate research gaps.



Contributed to a peer-reviewed publication on health and climate change in collaboration with the University of Lagos.

4.3 Closing Out with Impact: IINDWEGE

ICED finalized its engagement with the Infrastructure's Impact on Nutritious Diet, Women's Empowerment, & Gender Equality (IINDWEGE) project by supporting the publication of its Evidence Gap Map. The project, funded by the Bill & Melinda Gates Foundation, investigated the impact of infrastructure on nutritious diets, women's economic empowerment, and gender equality. The research focused on rural, low-income consumers in Sub-Saharan Africa and South-East Asia, with the goal of transforming lives in these regions. This marked the successful completion of a rigorous evidence process and contributed to the global knowledge base.

Highlights



Evidence Gap Map accepted and published in a peer-reviewed journal.

[View EGM](#)



Images capturing moments during a findings dissemination workshop on IINDWEGE.

4.4 The ALL-IN Research Network (ARN)

ARN is a flagship initiative of the International Centre for Evaluation and Development to strengthen locally led, policy-relevant research and peer learning across Africa.

The Network provides opportunities for African researchers to learn by doing in collaboration with mentors and peers from the Network's management institutions and their research networks.

Highlights



Convened 6 virtual engagements (2 membership meetings, 4 webinars) engaging 204 researchers from 222 members.



Strengthened researchers' capacity to navigate shifts in funding and the development research ecosystem through interactive town halls.



Built methodological rigor by equipping members with skills in evaluation, systematic reviews, and Evidence and Gap Maps (EGMs).



Promoted innovation in research practice, including the responsible use of AI in qualitative research.

Highlights from 2025 Webinars

- Rigorous methods in research and evaluation can identify evidence gaps, support better decision-making, inform policy and programming, and encourage contextually relevant development.
- Innovation, when engaged with and applied appropriately, can enhance efficiency and insight without compromising research quality or contextual understanding.

Overall, ARN's 2025 events exposed members to practical tools, real-world evaluation experiences, and innovative methodologies, while reinforcing the Network's commitment to locally led, policy relevant research. Through these engagements, members strengthened their ability to adapt, evaluate, collaborate, and generate evidence that informs inclusive development across the continent.

4.5 Monitoring and Evaluation

ICED-led Consortium Selected as Impact Partner Organization for Mastercard Foundation

In 2025, ICED joined the Mastercard Foundation as an Impact-Oriented Partner (IPO) within a consortium with the African Population and Health Research Center (APHRC) and TANGO International. ICED supported the Foundation's Pan-African Programmes (PANA), Health and Education Systems and Climate Innovation (HECSI), Education and Transitions (E&T), and Strategic Partnerships and Innovation (SP&I) platforms by strengthening monitoring, evaluation, and learning systems to support adaptive management and learning.

ICED's role focused on strengthening the Foundation's monitoring, evaluation, and learning ecosystem across three core areas. This included programme support through co-creation and facilitation of theories of change and MEL frameworks with platform teams; technical delivery through reviews and evaluations designed to generate actionable learning for adaptive management; and field-building efforts aligned with the Foundation's commitment to education access and poverty alleviation.

This partnership reinforced ICED's strategic focus on MEL that supports learning, adaptation, and systems change. The IPO engagement deepened ICED's capacity to work across complex portfolios, collaborate within multi-partner consortia, and advance African-led evaluation approaches, laying a strong foundation for continued contribution to evidence-driven, youth-centred development programming.

Strengthening Somali's National Evaluation Systems

Building on foundational work undertaken in 2024, ICED continued its support to Somalia in 2025, deepening efforts to strengthen national evaluation systems and promote the use of evidence in policy and practice. Core areas of support included capacity building for public institutions, high-level policy engagement, and technical assistance to advance evaluation standards aligned to Somalia's governance and development priorities.

In 2025, ICED's CEO, Dr. David Sarfo Ameyaw, attended the Second Annual Somalia Monitoring and Evaluation Conference, where ICED was recognized for its pivotal contribution to government-led evaluation efforts. The award also acknowledged ICED's longstanding partnership with the Ministry of Planning, Investment and Economic Development, established in 2023 to strengthen Somalia's internal evaluation capacity, accountability, and evidence-informed decision-making.

[Read More](#)

Far Left: Dr Ameyaw (ICED CEO), Far Right: Dr Samson Machuka (ICED Board Member) during the Somalia's M&E Conference held in November 2025.



ICED-Supported Evaluation Strengthening WADEMOS Across West Africa

ICED conducted an independent evaluation of the West Africa Democracy Solidarity Network (WADEMOS), assessing its effectiveness, sustainability, partnerships, and inclusion. The evaluation covered nine countries in the ECOWAS region and applied a participatory approach, ensuring stakeholder voices informed findings.

Strategic Midterm Strategy Review and Learning Support-African Capacity Building Foundation (ACBF)

In 2025, the International Centre for Evaluation and Development (ICED) conducted a midterm review of the African Capacity Building Foundation's (ACBF) 2023–2027 Strategy. The review assessed how the Strategy was being operationalized and provided evidence-informed recommendations to strengthen implementation, measurement, and accountability for the remainder of the Strategy period.

Independent Programme Review and Evidence-to-Impact Assessment – Supporting Pastoralism and Agriculture in Recurrent and Protracted Crises (SPARC) Programme

In ICED undertook an independent external review of the Foreign, Commonwealth and Development Office (FCDO)-funded SPARC programme (2020–2026) to inform the design of a second-generation initiative. Using a mixed-methods approach, the review assessed programme performance, evidence quality, policy influence, and the effectiveness of the multi-partner consortium across six thematic pillars in fragile and crisis-affected contexts.

Results Framework Design and Organisational MEL Strengthening – Partnership for African Social and Governance Research (PASGR)

ICED partnered with the Partnership for African Social and Governance Research (PASGR) to design a results measurement framework aligned to its strategic plan. The engagement strengthened PASGR's ability to track progress, generate evidence, and support learning, accountability, and strategic decision-making, with implementation now underway.

Impact Evaluation and Learning for Community-Based Environmental Programming – Greening Mua Environmental Initiative (GMEI)

ICED provided monitoring, evaluation, and learning support to the Greening Mua Environmental Initiative (GMEI) through an impact evaluation of its five-year community interventions in Mua Hills. The mixed methods evaluation assessed outcomes across environmental restoration, livelihoods, water, sanitation and hygiene (WASH), and clean energy, generating actionable insights to strengthen programme design, sustainability, and scale.

5. POLICY INFLUENCE

ICED Participates in International Evaluation Capacity Development Forum in China

From June 8–14, 2025, Dr. David Sarfo Ameyaw, CEO and President of ICED, participated in the 2025 Summer Evaluation Bootcamp for Young and Emerging Evaluators (SEB) at Lanzhou University. The bootcamp brought together young researchers and experienced evaluation experts for practical training, knowledge exchange, and global networking.

Dr. Ameyaw served as a panelist on Evaluation Capacity Development for Young and Emerging Evaluators, alongside representatives from EvalYouth chapters in China and Asia, contributing to discussions on strengthening evaluation skills and leadership among the next generation of evaluators. [Read More](#)

ICED Joins African Parliamentarians and Development Partners at the APNODE's 10th Annual General Assembly in Morocco

From November 19–21, 2025, Steve Ogutu, ICED's Director of Communication and Partnerships, attended the 10th Annual General Assembly of APNODE in Layoune, Morocco. The event brought together African parliamentarians and development partners to discuss progress and challenges in evidence-informed development. ICED shared insights from its work with 24 African governments and showcased innovative tools like the ICED Evidence Gap Maps, which are transforming policy and program evaluation across the continent. [Read More](#)

ICED at Evidence 2025

ICED participated in the Evidence 2025 Conference in Cotonou, Benin, joining policymakers, researchers, and practitioners to share and exchange insights on advancing evidence-based decision-making across Africa. Over the two-day conference, the ICED team showcased innovative tools and research approaches informing policy and practice, while engaging in learning, reflection, and dialogue with peers. The experience strengthened ICED's commitment to translating evidence into action and contributing to more effective, evidence-informed policies across the continent. [Read reflection from the conference](#)



ICED at the International Evaluation Capacity Development Forum in Lanzhou, China



ICED at the APNODE Annual General Assembly in Layoune, Morocco



ICED at Evidence 2025 Conference in Cotonou, Benin

5.1 Evidence To Action (E2A) 2025 Conference

E2A is ICED's flagship continental policy dialogue forum designed to shape an Africa where evidence matters. The 10th Evidence to Action (E2A) Conference, held July 14–18, 2025 at the University of Ghana, Accra, convened 512 delegates from 30 countries, including policymakers, researchers, civil society, traditional leaders, and academics. Co-organized by ICED and ISSER, the conference focused on inclusive governance and evidence-based policymaking.



▲ The Chief Guest, Hon. Ahmed Ibrahim leading in cutting the ribbon to officially open E2A 2025.



▲ Right-to-Left: Prof. Peter Quartey, Hon. Ahmed Ibrahim, Dr. Namanga Ngongi, Prof. Michael Carter, and Emmanuel Anyimadu at the conference.

“Governance isn’t just about the state - it’s about the people. Participatory governance must be evidence-informed, and we’re pleased to see the Evidence to Action Conference 2025 prioritizing this.”

~ Hon. Ahmed Ibrahim (MP), Minister for Local Governance, Chieftancy, and Religious Affairs, while delivering his keynote remarks at E2A 2025.

Highlights

12

Plenary Sessions

Hosted by ICED, ReFinD, COSA, and PACKS Africa.

30

Research Presentations

Delivered by scholars across Africa and beyond.

4

Side Events

Featured presentations, roundtables, and panel discussions

12

Breakout Panels

Explored innovations in governance, financial inclusion for smallholder farmers, women and youth participation, judicial reform, civil society sustainability, and local governance

Core Themes



The conference underscored African-led research and community-driven solutions as essential for turning evidence into action.

[Read the Full Conference Report Here](#)



The Vice Chancellor of the University of Ghana (right) and the chief guest at E2A 2025.



The Director of ISSER, Prof. Peter Quartey, delivering remarks during a session at E2A 2025.



Conference participants posing questions during the conference.

5.2 Media Engagement

In 2025, ICED engaged the media to share insights and thought leadership in advancing evidence-based development in the continent.

ICED's President & CEO Speaks to CNBC

Dr. Ameyaw, ICED's President & CEO speaks to CNBC on how ICED is advancing policy and research collaboration across Africa and Asia. Dr. Ameyaw discussed ICED's strategic efforts to foster crosscontinental collaboration in policy innovation, research, and development, highlighting impactful initiatives across Africa and Asia.

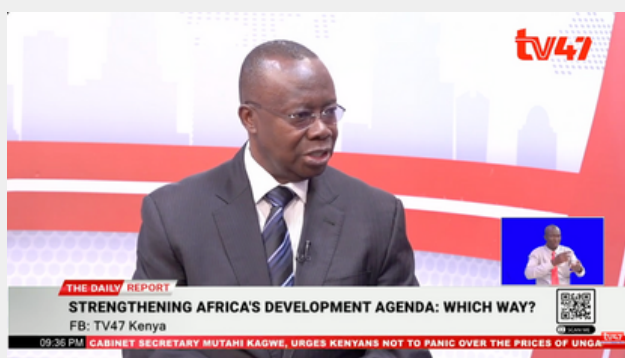
Watch full interview [here](#).



Interview with Kenya's TV47

Dr. Ameyaw appeared on TV47 where he offered insights on practical use of evidence to drive inclusive governance.

Read more [here](#).



E2A Conference featured in Ghanaian Media

Thrilled to share that the just-concluded Conference, cohosted by ISSER UG and ICED was featured in Ghanaian media. The piece highlights our shared call for evidence-based policies to drive inclusive and sustainable development in Africa.

Read more [here](#).



6. OUR FINANCIALS

Consolidated Statement of Financial Position for the Year Ended 31 December 2024 and 2023

Assets	2024	2023
Cash and cash equivalents	788,605	838,487
Accounts Receivable and Prepaid Expense	16,547	12,573
Property and equipment, net	298,080	38,220
Total assets (USD)	1,103,232	889,280
Liabilities and Net Assets	2024	2023
Accounts payable and accrued expenses	49,381	41,374
Total liabilities (USD)	49,381	41,374
Net Assets	2024	2023
With donor restrictions	837,655	1,006,715
Without donor restrictions	216,196	(158,809)
Total net assets	1,053,851	847,906
Total liabilities and net assets (USD)	1,103,232	889,280

Consolidated Statement of Activities For the Year Ended 31 December 2024 and 2023

Category	2024 Without Donor Restrictions (USD)	2024 With Donor Restrictions (USD)	2024 Total (USD)	2023 A (USD)
Contract Income	158,023		158,023	200,845
Grant Income	600,000	1,393,406	1,993,406	2,233,156
Other Income	78,472		78,472	8,884
Total revenue, support, and gains	836,495	1,393,406	2,229,901	2,442,885
EXPENSES - Program services expense				
Direct program expenses	26,241	1,562,466	1,588,707	2,336,979
Total program service expenses	26,241	1,562,466	1,588,707	2,336,979
Supporting services expense				
Employment expenses	157,243		157,243	47,105
Administrative expenses	205,258		205,258	205,570
Establishment expenses	72,748		72,748	37,032
Total supporting services expenses	435,249		435,249	289,707
Total expenses	461,490	1,562,466	2,023,956	2,626,686
Change in Net Assets	375,005	(169,060)	205,945	(183,801)
Net Assets, Beginning of Year	(158,809)	1,006,715	847,906	723,583
Prior-period adjustment correction				308,124
Net Assets, End of Year	216,196	837,655	1,053,851	847,906

Consolidated Statement of Financial Position for the Year Ended 31 December 2024 and 2023 Continuation...

Expense Category	Direct Program Expenses (USD)	Administrative Expenses (USD)	Employment Expenses (USD)	Establishment Expenses (USD)	Supporting Services Total (USD)	2024 Total Expenditure (USD)	2023 Total Expenditure (USD)
Consultant fees	54,882	25,159			25,159	80,041	90,816
Grants awards disbursed	917,590					917,590	992,712
Travel expenses		42,913			42,913	42,913	50,852
Program implementation expenses	421,760					421,760	537,468
Other program expenses							304,482
Bank charges and fees		16,648			16,648	16,648	16,603
General expenses		36,546			36,546	36,546	32,903
Subscriptions		11,006			11,006	11,006	7,354
Audit fees		8,228			8,228	8,228	12,726
Forex gains/losses		(6,290)			(6,290)	(6,290)	(10,091)
Transport expenses	196	4,898			4,898	5,094	3,039
Medical Insurance & Expense			18,006		18,006	18,006	17,204
Legal and professional fees		2,431			2,431	2,431	3,785

Consolidated Statement of Financial Position for the Year Ended 31 December 2024 and 2023 Continuation...

Expense Category	Direct Program Expenses (USD)	Administrative Expenses (USD)	Employment Expenses (USD)	Establishment Expenses (USD)	Supporting Services Total (USD)	2024 Total Expenditure (USD)	2023 Total Expenditure (USD)
Donation		10124			10124	10124	355
Printing & Collateral		359			359	359	190
Operating expenses		37,651			37,651	37,651	44,170
Salaries and staff expenses	193,589		139,237		139,237	332,826	474,331
Depreciation				17,298	17,298	17,298	6,858
Loss on disposal				1,523	1,523	1,523	
Rentals & service charges				32,885	32,885	32,885	20,308
Repairs and maintenance				11,506	11,506	11,506	1,430
Utilities & communication expense				8,754	8,754	8,754	5,426
Fuel	690			560	560	1,250	675
Website development & management		824			824	824	2,335
Security expense				222	222	222	
TOTAL EXPENSES BY FUNCTION	1,588,707	205,258	157,243	72,748	435,249	2,023,956	2,626,686

7. ACKNOWLEDGMENT OF PARTNERS

ICED's achievements in 2025 would not have been possible without the trust, collaboration, and support of our partners. We extend our sincere gratitude to governments, research institutions, foundations, multilateral organizations, civil society, and community stakeholders across Africa and beyond. Your commitment to advancing evidence-informed development, fostering local leadership, and supporting youth and marginalized groups has been instrumental in enabling ICED to generate credible research, strengthen capacity, and translate knowledge into action that drives meaningful and lasting change.

Our Partners

We, at ICED, extend our deep appreciation to our donors and partners for their resolute support and partnership.

- Mastercard Foundation
- Gates Foundation
- Hewlett Foundation
- Campbell Collaboration
- Global Development Network (GDN)
- Committee on Sustainability Assessment (COSA)
- Institute of Statistical, Social and Economic Research (ISSER)
- University of Ghana
- Sankofa Consulting
- Government of Somalia
- Science for Africa Foundation





Evidence. Learning. Impact.



info@iced-eval.org



International Centre for Evaluation and Development (ICED)

©

International Centre for Evaluation and Development,
2026