

# Hp Tuners Read & Info Log Instructions

**THIS ARTICLE WILL WALK YOU THROUGH THE PROCESS TO RETRIEVE A STOCK READ AND INFO LOG FROM YOUR TRUCK.**

**BEFORE YOU DO ANYTHING ELSE ON THE TRUCK INSTALL THE PROGRAMS LISTED BELOW**

**1. DOWNLOAD & INSTALL .NET WINDOWS RUNTIME 8:**

**[HTTPS://AKA.MS/DOTNET/8.0/WINDOWSDESKTOP-RUNTIME-WIN-X64.EXE](https://aka.ms/dotnet/8.0/windowsdesktop-runtime-win-x64.exe)**

**2. DOWNLOAD & INSTALL THE LATEST VCM SUITE BETA:**

**[HTTPS://WWW.HPTUNERS.COM/DOWNLOADS/](https://www.hptuners.com/downloads/)**



# Stock Read

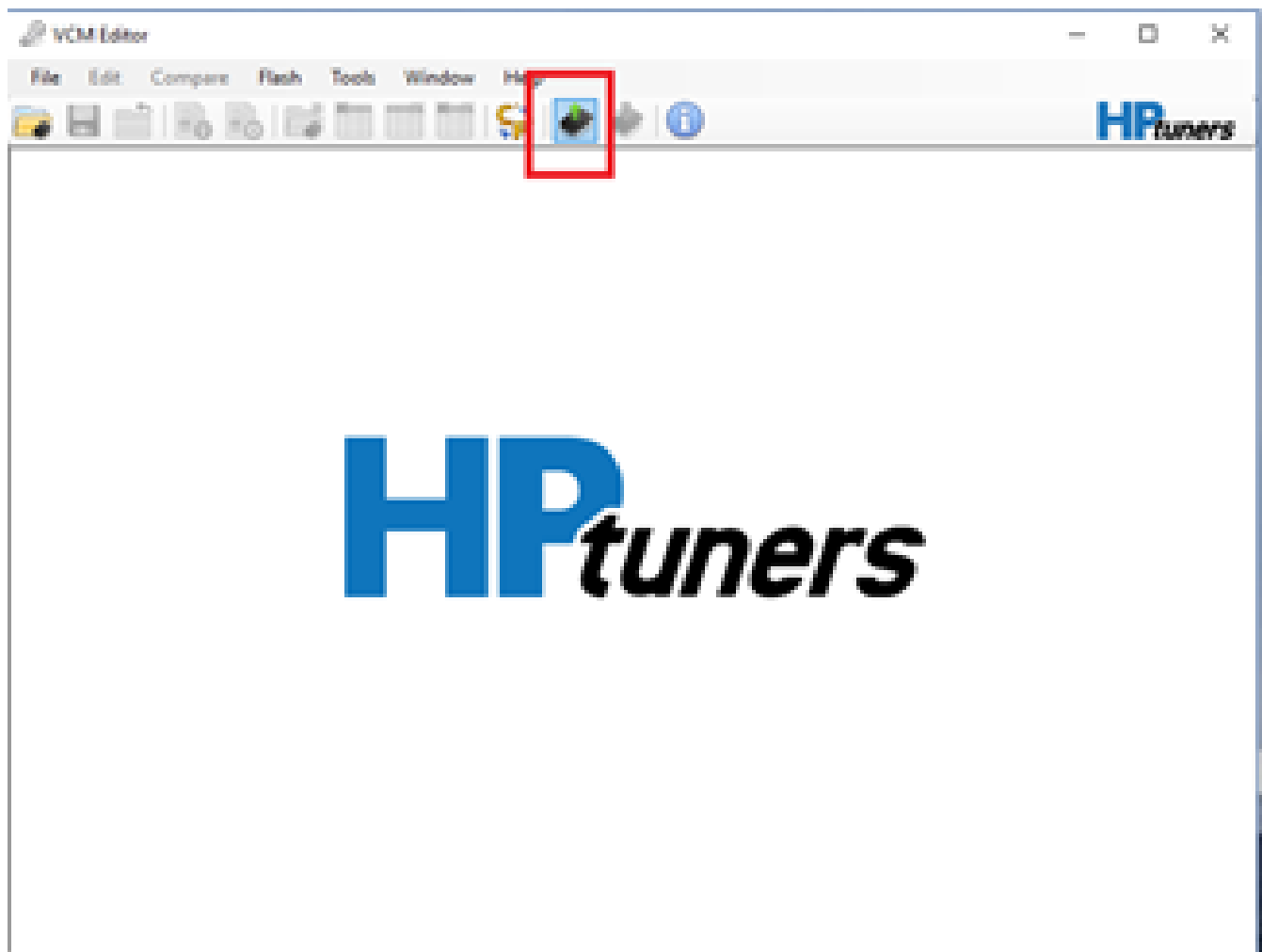
OPEN "VCM EDITOR" OR "RTD FLASHER" FOR READING & WRITING.

"VCM EDITOR" WILL BE USED IF YOU HAVE AN MPVI3, YOUR FILES SHOULD BE SAVED AS "FILENAME.HPT". "RTD FLASHER" WILL BE USED IF YOU HAVE AN RTD, YOUR FILES WILL BE SAVED AS "FILENAME.RTD".

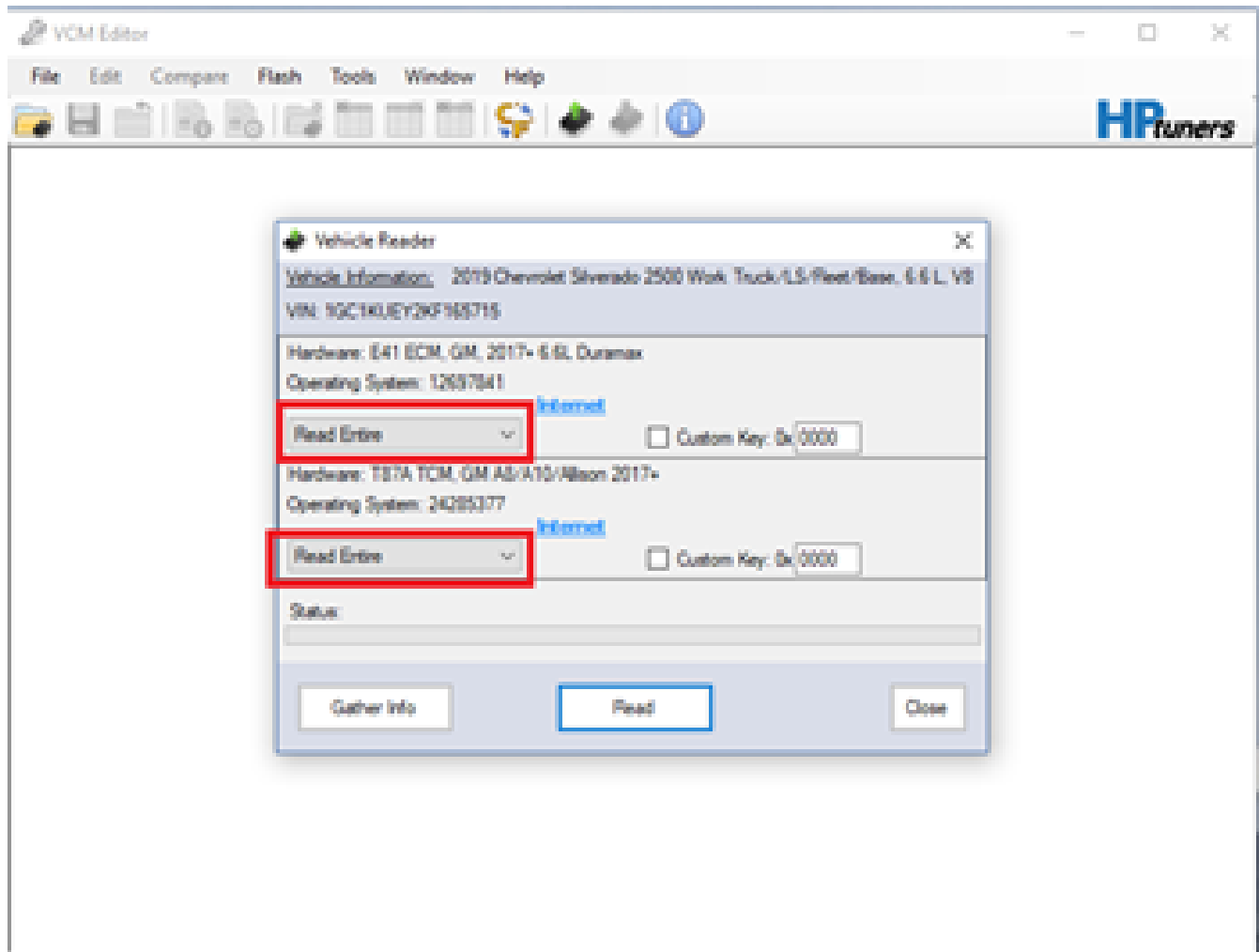
TO READ YOUR ECM OR TCM START BY PLUGGING THE MPVI INTO THE COMPUTER AND TRUCK WITH THE IGNITION IN THE RUN POSITION.

CLICK THE GREEN READ ARROW IN THE TOP CENTER OF VCM EDITOR

IF YOU CANNOT SELECT THE READ BUTTON, SELECT FILE>CLOSE TO CLOSE THE OPENED ITEM.



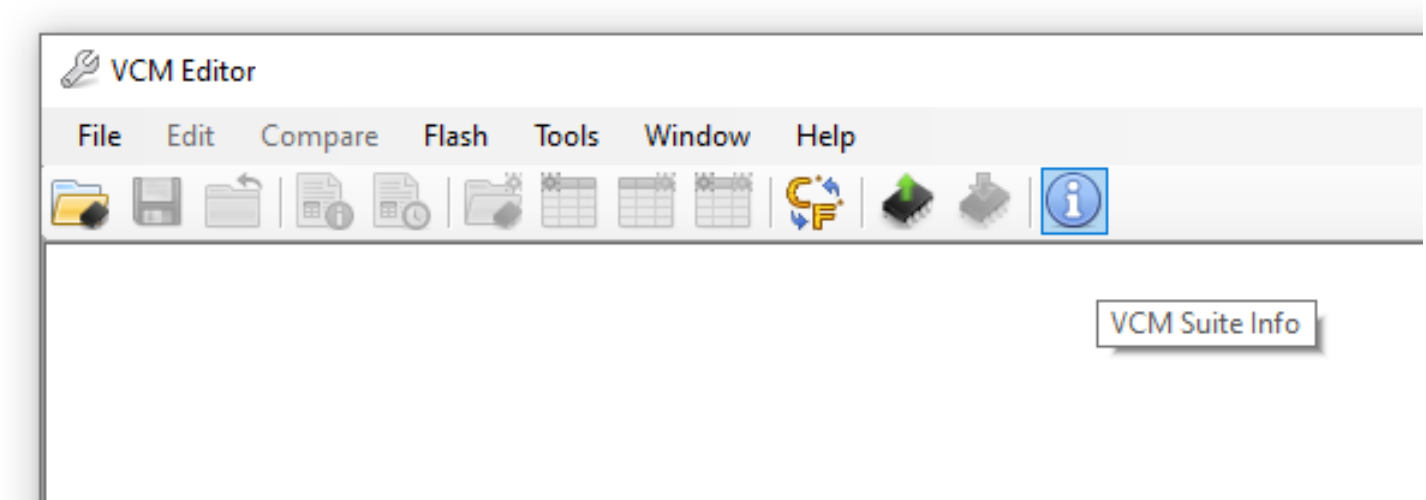
- **SELECT THE MODULES YOU WOULD LIKE TO READ.**



**SAVE THIS FILE TO YOUR DESKTOP, INCLUDE YOUR FIRST/LAST NAME AND VIN IN THE FILE NAME, AND EMAIL IT TO YOUR SUPPORT REP AND/OR SUPPORT@THEDIESELTECHS.COM ALONG WITH AN INFO LOG.**

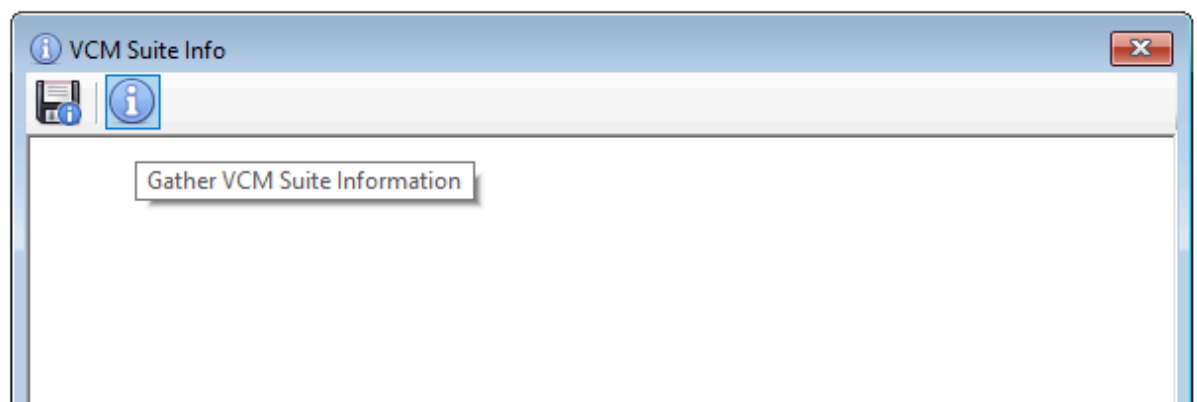
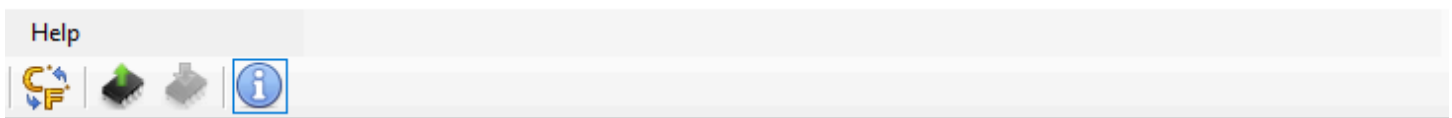
# Info Log Instructions

**STEP 1: CLICK THE VCM SUITE INFO BUTTON IN EITHER THE VCM EDITOR OR VCM SCANNER PROGRAM.**



**STEP 2: CLICK THE BLUE CIRCLE "I" ICON TO POLL THE SOFTWARE AND THE VEHICLE.**

**NOTE: MAKE SURE YOUR CABLE IS CONNECTED TO THE VEHICLE AND THE VEHICLE'S KEY IS IN THE ON POSITION BEFORE CLICKING THE BLUE ICON. THIS STEP MAY TAKE FIVE TO TWENTY SECONDS TO COMPLETE.**



**STEP 3: WHEN THE INFOLOG HAS COMPLETED GENERATING, CLICK ON THE SAVE ICON. SAVE IT WITH YOUR FIRST AND LAST NAME AND VIN. ONCE THE FILE IS SAVED, IT IS READY TO EMAIL.**

