

FOR LEASE

CORBIN PARK NORTH RETAIL

135th and Lamar Ave | Overland Park, Kansas 66223

PROPERTY HIGHLIGHTS

- 1,214 SF Available in Corbin Park
- 135th Street visibility with over 42,000 CPD
- Surrounded by high income demographics
- Join Cava, Bibibop, Potbelly and Lash Lounge
- Adjacent to Corbin Park anchor tenants including Sprouts, Lifetime Fitness, Scheels, JCPenney, and Von Maur



AREA DEMOGRAPHICS

	1 mile	3 mile	5 mile
2022 Population	12,401	91,997	189,935
Avg Household Income	\$122,749	\$149,103	\$145,180
Daytime Population	9,061	45,687	114,131

ERIC FRANZ

efranz@Crossroads-KC.com

M (785) 691-6196

Crossroads Real Estate Group
O (816) 298-9998
7227 Metcalf Avenue, Suite 201
Overland Park, KS 66204



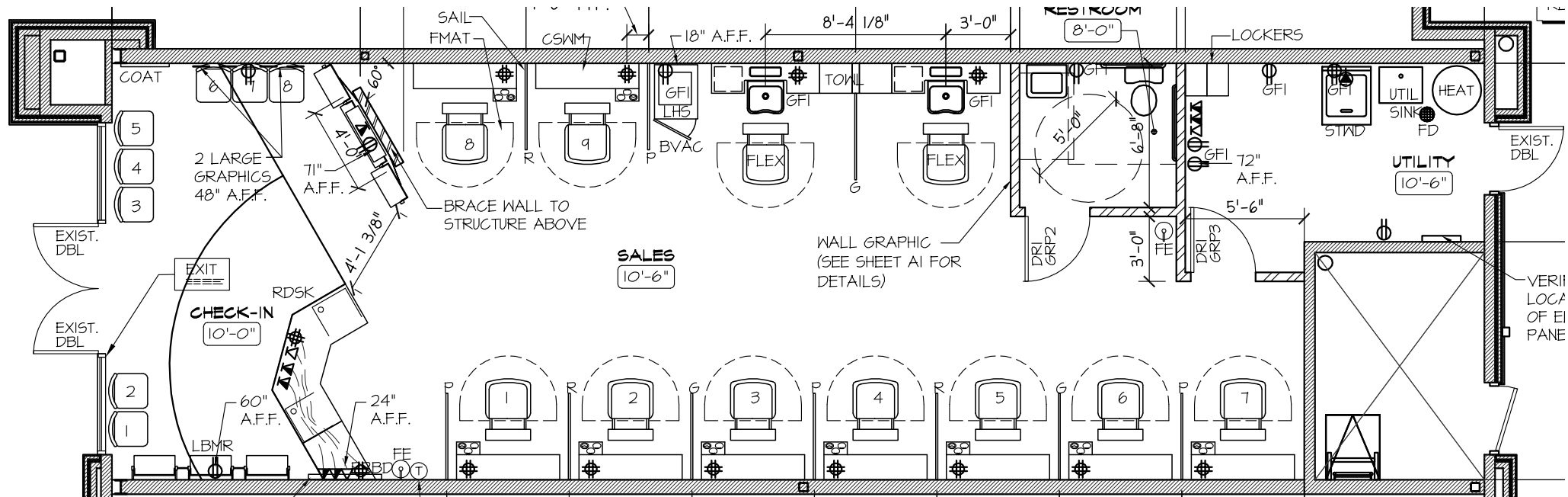
CROSSROADS
REAL ESTATE GROUP

135th and Lamar Ave | Overland Park, Kansas 66223

Suite	Tenant Name	SF
A	Potbelly Sandwich Shop	2,042
B	Bibibop	2,514
C	AVAILABLE	1,214
D	Lash Lounge	1,265
E	CAVA	2,851



AVAILABLE SPACE



The information contained herein has been obtained through sources deemed reliable by Crossroads Real Estate Group, but cannot be guaranteed for its accuracy. We recommend to the buyer that any information, which is of special interest, should be obtained through independent verification. All measurements are approximate.

Crossroads Real Estate Group
O (816) 298-9998
7227 Metcalf Avenue, Suite 201
Overland Park, KS 66204



CROSSROADS
REAL ESTATE GROUP

135th and Lamar Ave | Overland Park, Kansas 66223

Southcreek
Business
Park

Deer Creek
Golf Club

Deer Creek Woods

Deer Creek Marketplace

Overland Trail
Middle School

Parkway
Plaza

SITE

34,028 VPD

Prairiefire

Church of the
Resurrection

Nicklaus
Golf Club at
Lionsgate

Corbin Park

icpenney VON MAUR

M (785) 691-6196

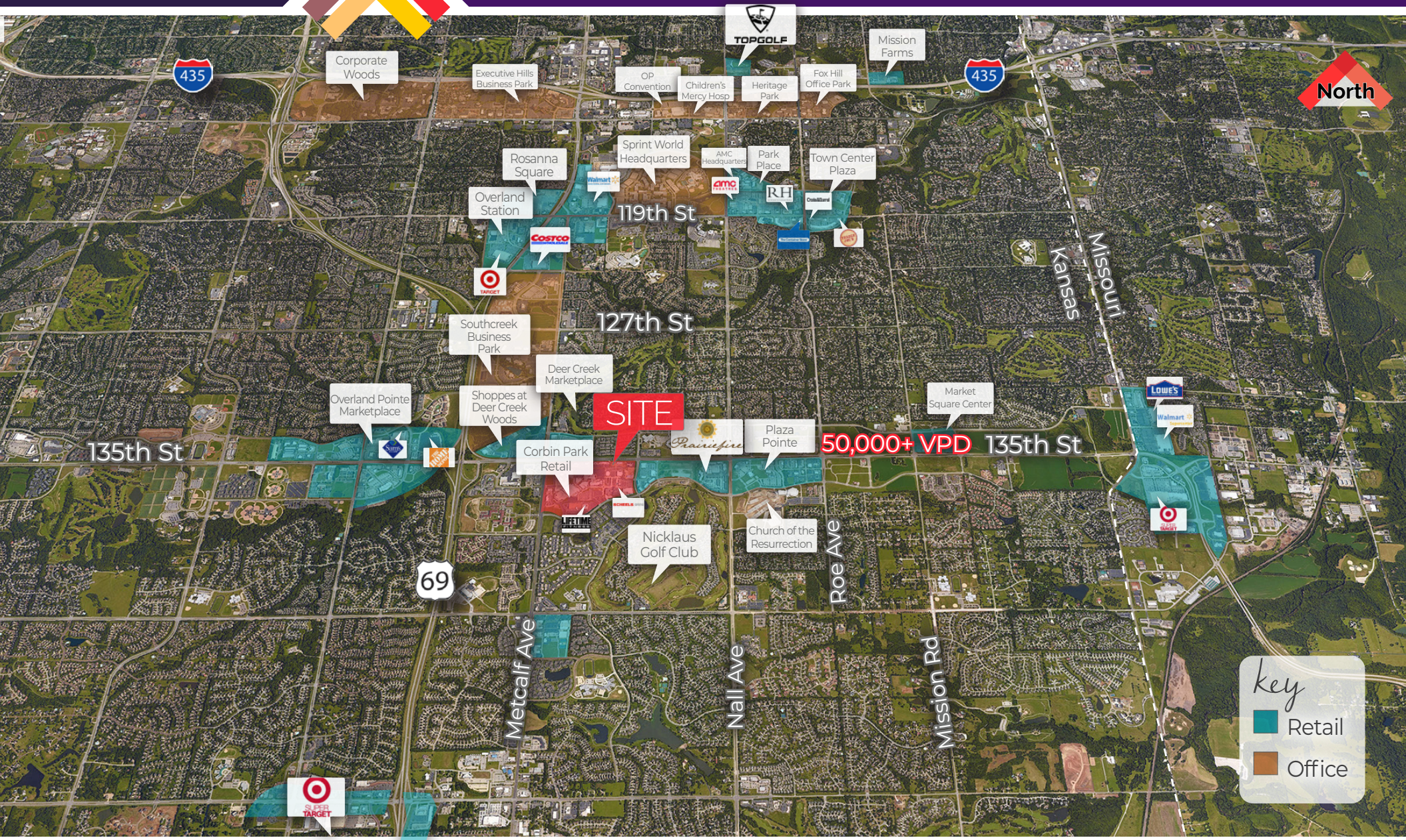


CROSSROADS
REAL ESTATE GROUP

FOR LEASE

CORBIN PARK NORTH RETAIL

135th and Lamar Ave | Overland Park, Kansas 66223



The information contained herein has been obtained through sources deemed reliable by Crossroads Real Estate Group, but cannot be guaranteed for its accuracy. We recommend to the buyer that any information, which is of special interest, should be obtained through independent verification. All measurements are approximate.

Crossroads Real Estate Group
O (816) 298-9998
7227 Metcalf Avenue, Suite 201
Overland Park, KS 66204



CROSSROADS
REAL ESTATE GROUP