

FOR LEASE



FOUR COLONIES - RETAIL/OFFICE SPACE

7902-7925 Quivira Road | Lenexa, KS 66216



PROPERTY FEATURES

- 1,500 SF move-in ready retail or office space
- High traffic intersection-40,632/cars/day
- Excellent parking
- Storage space available
- Lease Rate: \$18 PSF, terms negotiable
- Tenants pay only base rent & utilities

GORDON SMITH

gsmith@Crossroads-KC.com

M (913) 636-7109

Crossroads Real Estate Group
O (816) 298-9998
7227 Metcalf Avenue, Suite 201
Overland Park, KS 66204



CROSSROADS
REAL ESTATE GROUP

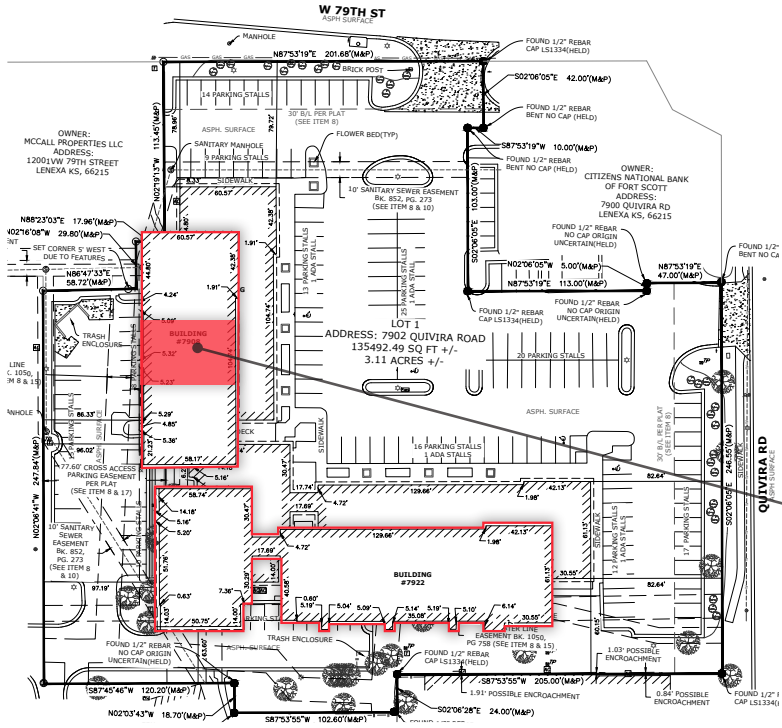
FOR LEASE



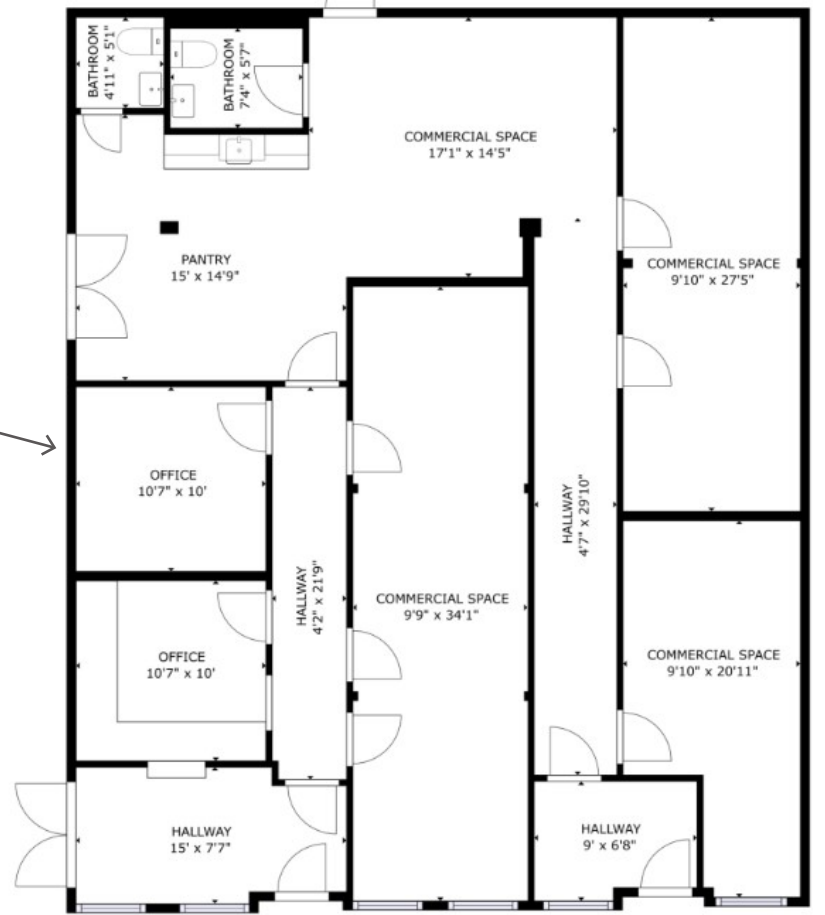
FOUR COLONIES - RETAIL/OFFICE SPACE

7902-7925 Quivira Road | Lenexa, KS 66216

SITE PLAN



FLOOR PLAN



The information contained herein has been obtained through sources deemed reliable by Crossroads Real Estate Group, but cannot be guaranteed for its accuracy. We recommend to the buyer that any information, which is of special interest, should be obtained through independent verification. All measurements are approximate. Maps or aerial imagery may be sourced from Google and used in accordance with applicable terms of service for illustrative purposes only.

Crossroads Real Estate Group
O (816) 298-9998
7227 Metcalf Avenue, Suite 201
Overland Park, KS 66204



CROSSROADS

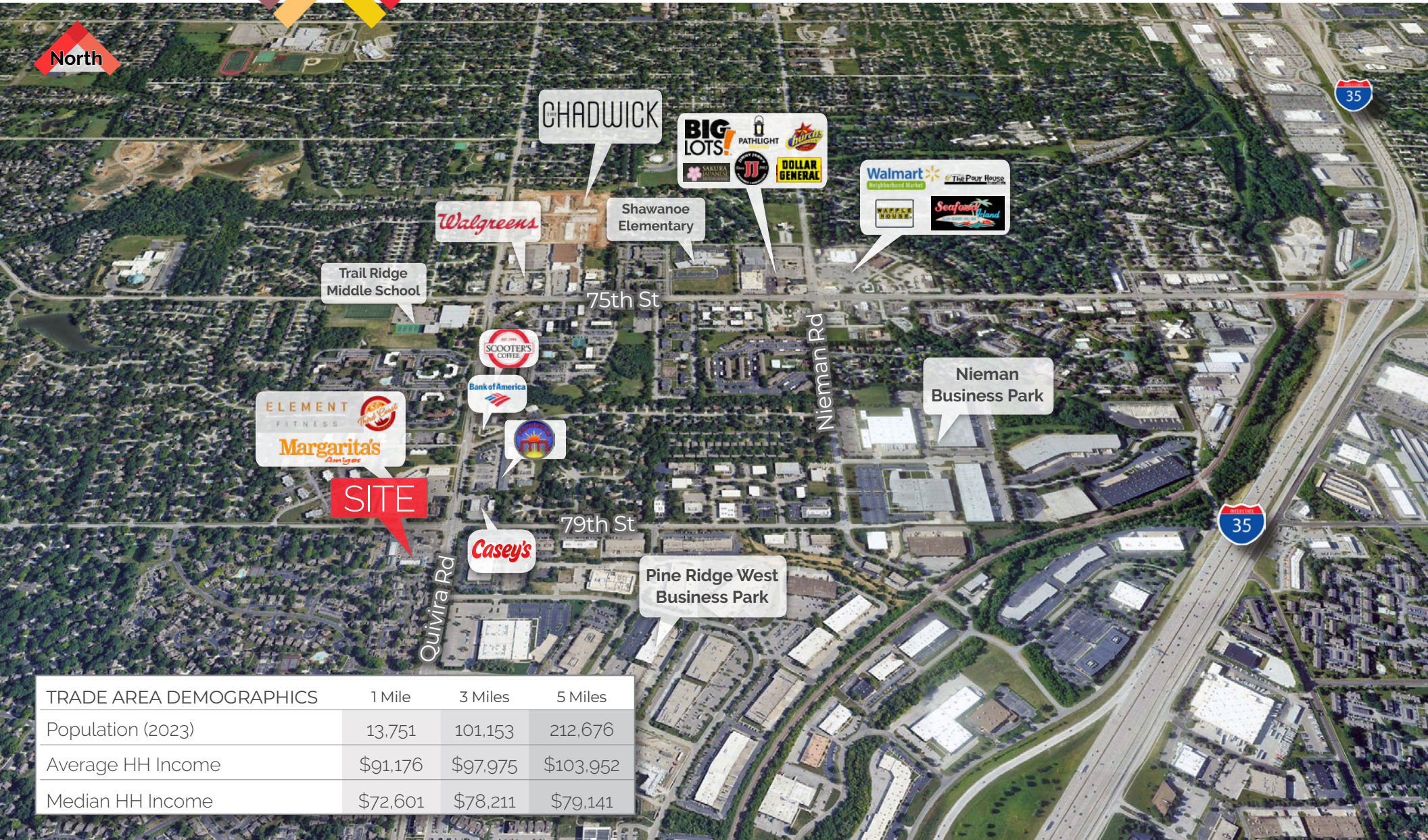
REAL ESTATE GROUP

FOR LEASE



FOUR COLONIES - RETAIL/OFFICE SPACE

7902-7925 Quivira Road | Lenexa, KS 66216



TRADE AREA DEMOGRAPHICS	1 Mile	3 Miles	5 Miles
Population (2023)	13,751	101,153	212,676
Average HH Income	\$91,176	\$97,975	\$103,952
Median HH Income	\$72,601	\$78,211	\$79,141

The information contained herein has been obtained through sources deemed reliable by Crossroads Real Estate Group, but cannot be guaranteed for its accuracy. We recommend to the buyer that any information, which is of special interest, should be obtained through independent verification. All measurements are approximate. Maps or aerial imagery may be sourced from Google and used in accordance with applicable terms of service for illustrative purposes only.

Crossroads Real Estate Group
 O (816) 298-9998
 7227 Metcalf Avenue, Suite 201
 Overland Park, KS 66204



CROSSROADS
 REAL ESTATE GROUP