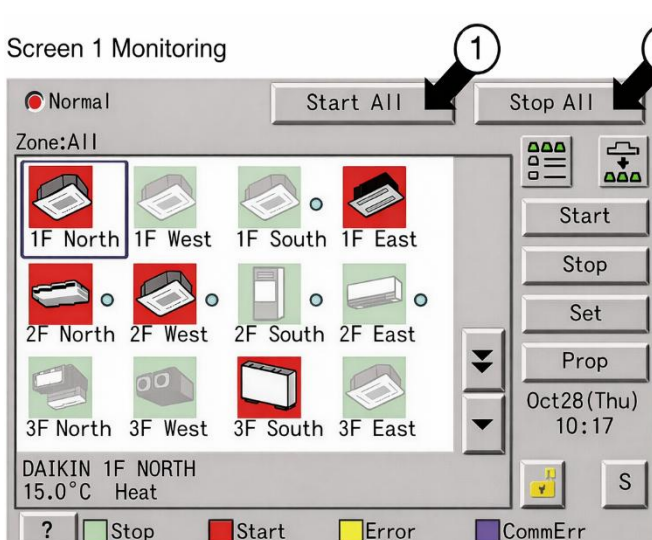


User Manual DCS601C51

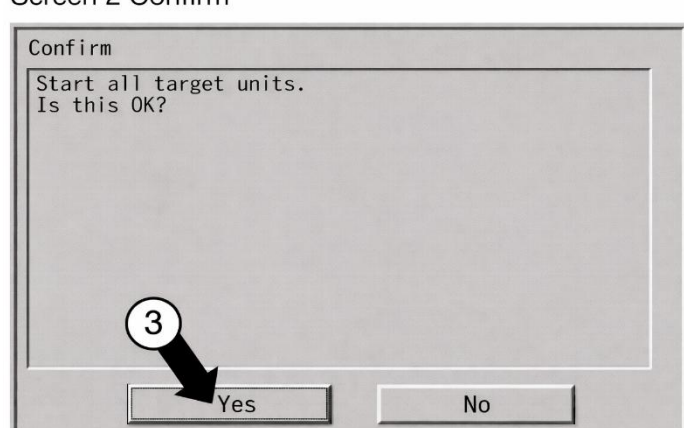
Air Conditioning Operation

Starting/ Stopping Operation Collectively

Screen 1 Monitoring



Screen 2 Confirm



To Start/ stop the operation of all devices connected

Start or stop collectively the operation of devices connected.

On the monitoring screen, operation is allowed with either Zone or Group as the display mode and with either Icon or List as the display type. In the example on the left, the display mode is Group in the collective mode and display type is Icon.

Procedure

1. On screen 1 Monitoring, press the **start all button** ① or **stop all button** ②
2. Screen 2 confirm appears. Press the **OK button** ③.

To exit without activating collective start or stop, press the *cancel* button.

Starting/ Stopping Operation by the Group

Screen 1 Monitoring

Screen 2 Monitoring (Group)

To Start/ stop the operation of devices by group

Start or stop the operation of air conditioners by group.

The example on the left shows the screen for starting/stopping the operation of Group Name: 1F North registered for Zone Name: Canteen.

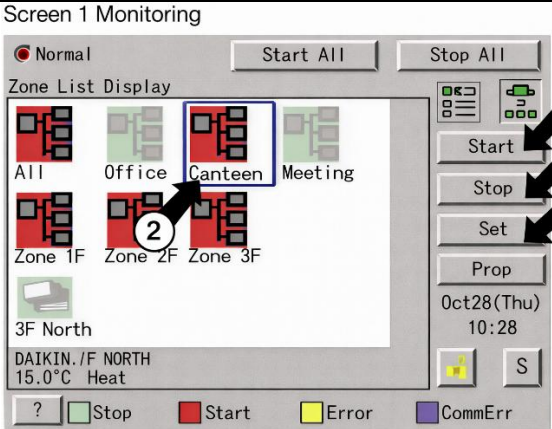
Zone Name

- Canteen
 - 1F North ← Air conditioner group to be started or stopped
 - 1F West
 - 1F South
 - 1F East
 - 2F North
 - 2F West
 - 2F South
 - 2F East
 - 3F North

Procedure

1. On screen 1 Monitoring, select a zone from the button ①
2. Select a zone that includes the group of which the operation is to be started or stopped ②
3. Select a group from the button ③. Screen 2 monitoring **Group** appears.
4. Select a group to be started or stopped as in ③. and press the **start** button ④ or **stop** button ⑤

Starting/ Stopping Operation by the Zone



To Start/ stop the operation of devices by group

Start or stop by zone the operation of groups of air conditioners set in zones.

the example on the left shows a screen for starting or stopping the operation of air conditioners in the canteen.

Zone Name

Collective Zone

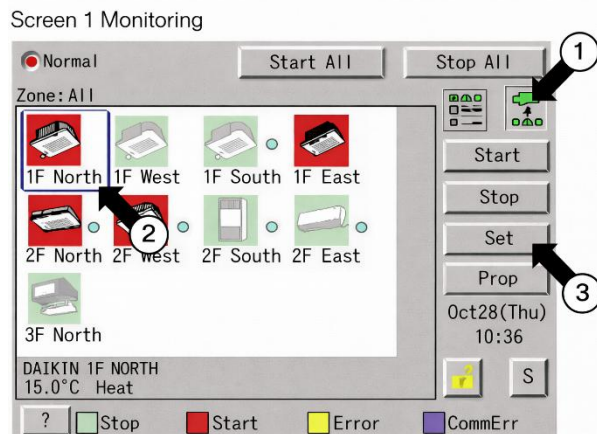
- Office
- Canteen ←
- Meeting
- 1F
- 2F
- 3F

Air conditioner group to be started or stopped

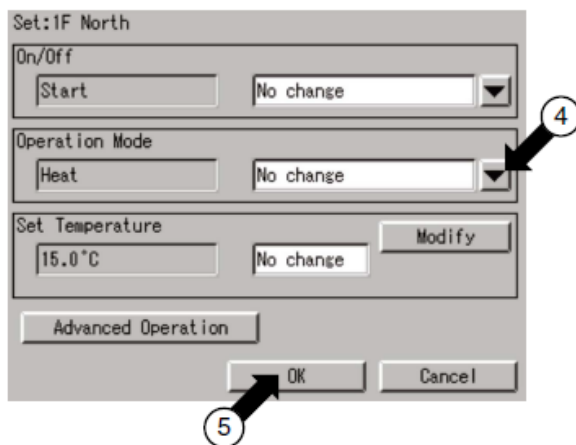
Procedure

1. On screen 1 Monitoring, select a zone from the button ①
2. Select a zone of which the operation is to be started/ stopped as shown in ②
3. Press the **Start button** ③. or **Stop button** ④ .

Switching the Operation Mode



Screen 2 Operation



Switch the operation mode of the air conditioner.

On the monitoring screen, operation is allowed with either Icon or List as the display type.

The operation mode can be switched by zone or by group.

Selecting a zone and switching the operation mode switches the mode of all air conditioners in the zone.

Selecting a group and switching the operation mode switches the mode of air conditioners in the group selected.

Procedure

1. On screen 1 Monitoring, select a zone or a group from the button ①
2. Select with ② a zone or a group of which the operation mode is to be switched
3. Press the **set button** ③. Screen 2 Operations appear.
4. Select the operation mode to be set from the pull down menu ④

On the menu, operation modes available for air conditioners in the zone are displayed if the switching is to be made by zone. See the example below.

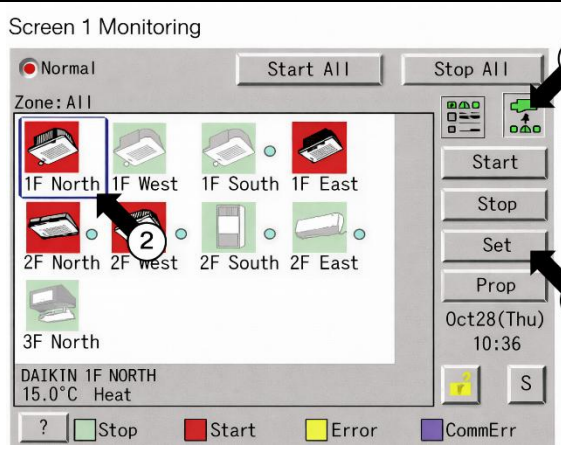
5. Press the **ok button** ⑤

To cancel the setting, press the cancel button.

E.g. For the following zone setting, the operation modes available are Fan, Cool, Heat and Auto. If Cool/ Heat option is not available for any air conditioner in the Zone, Fan and Set Point are available operation modes

Zone name	Group name	Operation modes available
Canteen	1F North	"Cool" "Air"
	1F West	"Cool" "Heat" "Auto" "Air"

Changing the Temperature Setting



Screen 1 Monitoring

Normal Start All Stop All

Zone: All

1F North 1F West 1F South 1F East

2F North 2F West 2F South 2F East

3F North

DAIKIN 1F NORTH
15.0°C Heat

? Stop Start Error CommErr

Start Stop Set Prop

Oct28(Thu)
10:36

5

Change the temperature setting of the air conditioners.

On the monitoring screen, operation is allowed with either Icon or List as the display type.

The temperature setting can be switched by zone or by group.

Selecting a zone and changing the temperature setting changes the setting of the air conditioner groups in Cool, Heat, Auto or Temp operation in the zone.

Selecting a group and changing the temperature setting changes the temperature setting of air conditioners in the group selected.

conditioners If all the air conditioners in the group selected are in Fan operation, temperature setting cannot be changed.

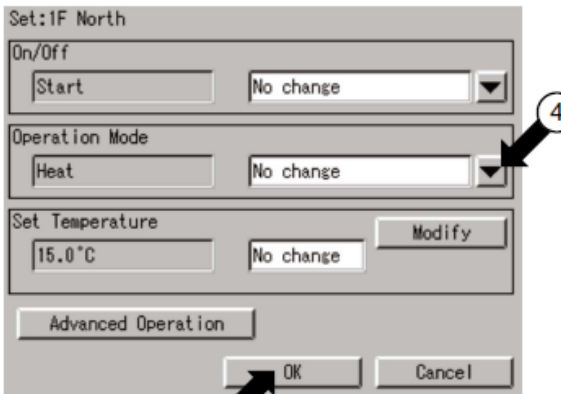
Procedure

1. On screen 1 Monitoring, select a zone or a group from the button ①
2. Select a zone or group of which the temperature setting is to be changed ②
3. Press the **set button** ③. Screen 2 Operations appear.
4. For temperature setting, press the **modify button** ④. Set temperatures dialog is displayed and input temperature for setting.

On the menu, temperature settings available for air conditioners in the zone are displayed is the setting is to be made by the zone. See example below.

5. Press the **ok button** ⑤

To cancel the setting, press the cancel button.



Screen 2 Operation

Set: 1F North

On/Off Start No change

Operation Mode Heat No change

Set Temperature 15.0°C No change Modify

Advanced Operation

OK Cancel

4

5

E.g. for the following zone setting, the temperature setting available are between 20°C and 30°C inclusive.

Zone name	Group name	Range of temperature settings available (see Note)
Canteen	1F North	25 to 30°C
	1F West	20 to 25°C
	1F West	20 to 25°C

When the temperature setting is 30°C, the actual temperature settings for air conditioners are shown as below:

Group name	Temperature setting
1F North	30°C
1F West	25°C

Note: range of temperature settings available is the range specified in accordance with the following:

- inherent to the air conditioner main unit.
- Range of temperature as a result of the restriction by the settling limit.

Resetting the Filter/ Element Sign

Screen 1 Monitoring

Screen 2 Operation

Screen 3 Advanced Operation

Reset the filter or element sign after cleaning any air conditioner showing the filter or element sign.

On the monitoring screen operation is allowed with either Icon or List as the display type.

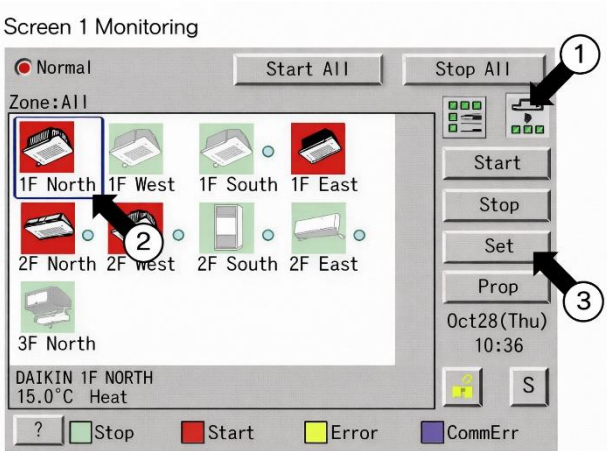
The filter or element sign can be reset by zone or by group.

Procedure

1. On screen 1 Monitoring, select a zone or a group from the button ①
2. Select a zone or a group of which the filter or element sign is to be reset ②
3. Press the **set button** ③. Screen 2 Operations appear.
4. Press the **advanced operations button** ④. Screen 3 advance operation appears.
5. To reset the filter/ element sign, select 'Filter Sign Reset' in pull down menu ⑤. Then press the **OK button** ⑥.
6. Then press the **OK Button** ⑦ on screen 2 operation.

To cancel the setting, press the cancel button.

Changin the Direction/ Fan Speed



Screen 1 Monitoring

Normal Start All Stop All

Zone: All

1F North 1F West 1F South 1F East

2F North 2F West 2F South 2F East

3F North

DAIKIN 1F NORTH
15.0°C Heat

? Stop Start Error CommErr

Start Stop Set Prop

Oct28(Thu) 10:36

S

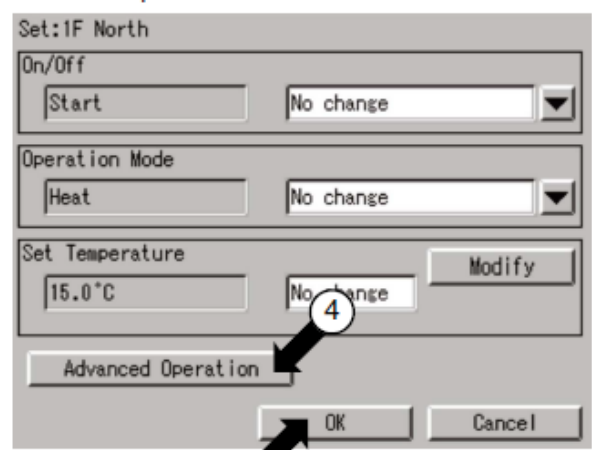
Change the fan direction or volume of air conditioners.

On the Monitoring screen, operation us allowed with either Icon or List as the display type.

The fan direction or volume can be changed by zone or by group.

Procedure

1. On screen 1 Monitoring, select a zone or a group from the button ①
2. Select a zone or a group of which the fan direction or volume is to be reset ②
3. Press the **set button** ③. Screen 2 Operations appear.
4. Press the **advanced operations button** ④. Screen 3 advance operation appears.
5. Set the direction with the pull-down menu ⑤.



Screen 2 Operation

Set: 1F North

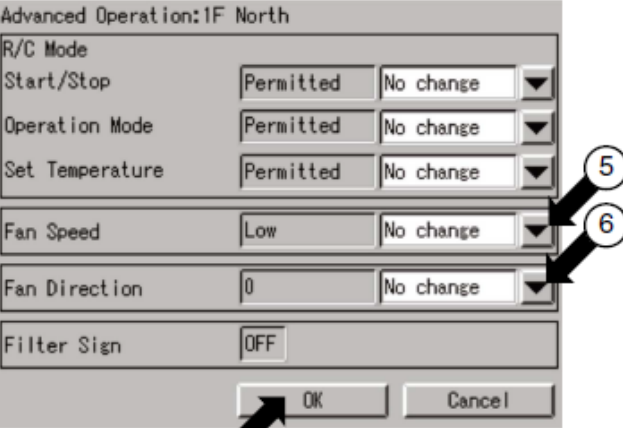
On/Off Start No change

Operation Mode Heat No change

Set Temperature 15.0°C No change Modify

Advanced Operation

OK Cancel



Screen 3 Advanced Operation

Advanced Operation: 1F North

R/C Mode

Start/Stop Permitted No change

Operation Mode Permitted No change

Set Temperature Permitted No change

Fan Speed Low No change

Fan Direction 0 No change

Filter Sign OFF

OK Cancel

The larger the value for wind direction setting (0-6), the closer to vertical the direction becomes. The value 7 indicates automatic swing. (Note: see the figure below.)

The description given above may not exactly apply depending on the model. Check the wind direction sig on the remote control after operation.

- Select between High and Low with the pull-down menu ⑤
- Then press the **OK button** ⑦

The description given To cancel the setting, press the **CANCEL** button. Screen 2 operations reappear.

6. Then press the **OK Button** ⑧ on screen 2 operation.

To cancel the setting, press the cancel button.

Note: Guidelines for wind direction value and actual direction

