

If you are a person who cares about the environment and does not give up a rug with a vintage, modern look, with a completely random cut and a looped texture made with nylon from fishing nets collected in the ocean and which is also soft, then Luna is the ideal mat for you. You will be surprised by the feel it has, reminiscent of natural fibers such as silk or tencel, but with a caveat, it has advantages far superior to traditional fabrics, both in terms of ease of cleaning and use, which make this rug model ideal for hotels and boutiques.

Available in 11 colors, you can choose the one that best suits what you want to convey.

## TECHNICAL SPECIFICATIONS:

### PILE COMPOSITION

100% Recycled Polyamide

### PILE WEIGHT/m<sup>2</sup>

± 1900 gr

### TOTAL WEIGHT/m<sup>2</sup>

± 2800 gr

### EFFECTIVE PILE HEIGHT

± 9,0 mm

### TOTAL HEIGHT

± 11,0 mm

### WIDTH

± 400 cm

### FIRE BEHAVIOUR

Cfl-s1

### EN 1307 CLASSIFICATION

Class 23 + 31 - Domestic Heavy

- Commercial Moderate



White Rhodium



Yellow Gold



Ice Palladium



Blue Sapphire



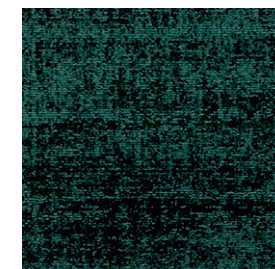
Enchanted Silver



Ancient Copper



Platinum



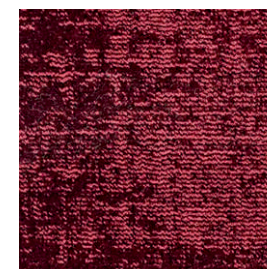
Sparkling Emerald



Antique Bronze



Iridium



Deep Ruby