

GALA DIAMOND

TRICANA

Are you looking for a sophisticated look for one of your rooms? Gala Diamond is a perfect option.

Woven in wool, it is a collection of bespoke diamond embossed rugs. It is designed with 2 heights of lace and a subtle groove at the bottom that combined provide a texture with a very elegant look.

Available in 4 trendy color combinations.

TECHNICAL SPECIFICATIONS:

PILE COMPOSITION

100% Pure New Wool

PILE WEIGHT/m²

± 1300 gr

TOTAL WEIGHT/m²

± 2860 gr

EFFECTIVE PILE HEIGHT

± 5,0 mm

TOTAL HEIGHT

± 7,0 mm

WIDTH

± 200 & 400 cm

FIRE BEHAVIOUR

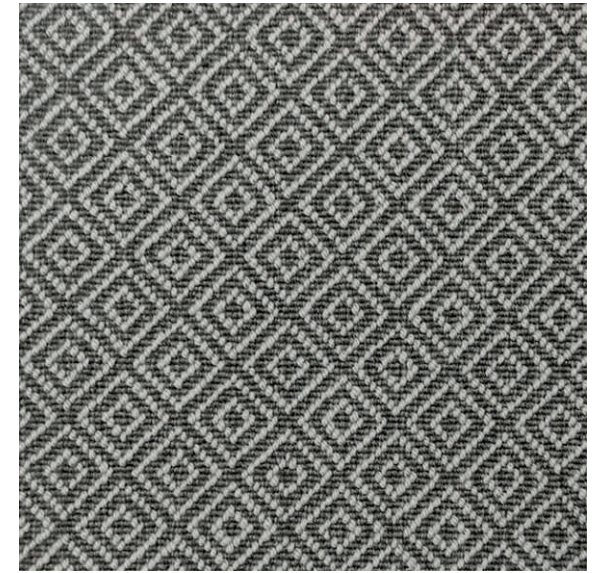
Bfl-s1

EN 1307 CLASSIFICATION

Class 23 + 33 - Domestic Heavy
- Commercial Heavy



Pumice



Granite



Basalt



Ocean

Colors and contrast may vary due to the composition and structure of the fibers.