

# GALA KEY

# TRICANA

If you are looking for a pure virgin wool rug, characterized by a beautiful play of textures with a labyrinthine design and that has a lot of personality, Gala Key is undoubtedly the best option.

Woven with geometric patterns, it is also suitable for commercial installations.

Available in 4 contemporary color combinations.

## TECHNICAL SPECIFICATIONS:

### PILE COMPOSITION

100% Pure New Wool

### PILE WEIGHT/m<sup>2</sup>

± 1300 gr

### TOTAL WEIGHT/m<sup>2</sup>

± 2860 gr

### EFFECTIVE PILE HEIGHT

± 5,0 mm

### TOTAL HEIGHT

± 7,0 mm

### WIDTH

± 200 & 400 cm

### FIRE BEHAVIOUR

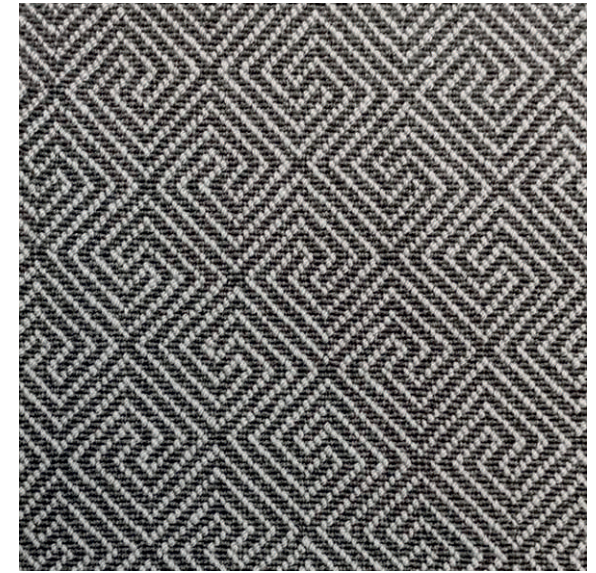
Bfl-s1

### EN 1307 CLASSIFICATION

Class 23 + 33 - Domestic Heavy  
- Commercial Heavy



Pumice



Granite



Basalt



Ocean

Colors and contrast may vary due to the composition and structure of the fibers.