

Terra is inspired by the hostile beauty of the world's great deserts and savannahs, where the fragile ecology is sustained by the rhythms of nature.

Woven for demanding environments, Terra is suited to both high performance interior use and external applications where it competes with the forces of nature.

For each square meter of Terra, 300 to 400 single-use plastic bottles were repurposed to create a natural PET fiber style.

TECHNICAL SPECIFICATIONS:

PILE COMPOSITION

100% Recycled Polyamide

TOTAL WEIGHT/m²

± 4200 gr

WIDTH

± 200 cm

FIRE BEHAVIOUR

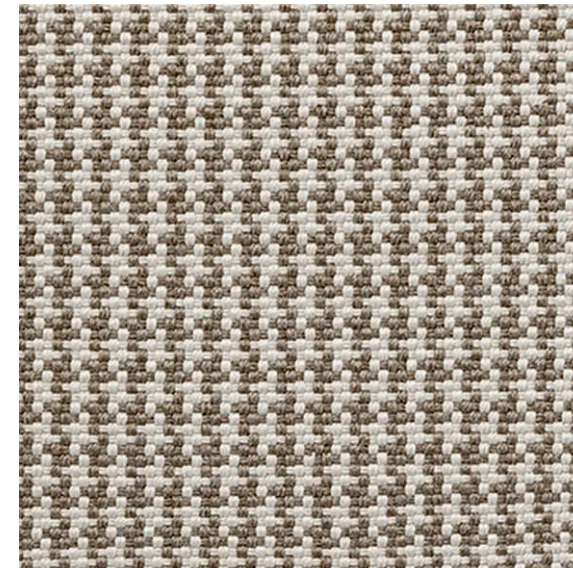
Dfl-s1

USAGE

Interior / Exterior

EN 1307 CLASSIFICATION

Class 23 + 33- Domestic Heavy
- Commercial Heavy



Oat Nut



Colors and contrast may vary due to the composition and structure of the fibers.