

# ROYAL CLASS

# TRICANA

We offer a large range of tufted carpets for both, the residential and contract market, with a vast array of tufting options and fiber combinations, a wide spectrum of colors and structures.

## TECHNICAL SPECIFICATIONS:

### PILE COMPOSITION

100% Pure New Wool

### PILE WEIGHT/m<sup>2</sup>

Range : 1200 g - 1700 g

### TOTAL WEIGHT/m<sup>2</sup>

Range : 2100 g - 2500 g

### TOTAL HEIGHT

± 7,5 mm

### WIDTH

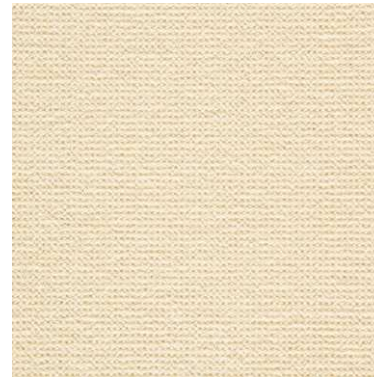
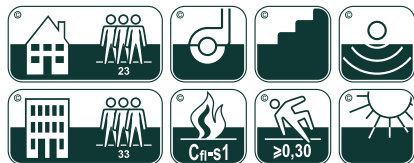
± 400 cm

### FIRE BEHAVIOUR

Cfl-s1

### EN 1307 CLASSIFICATION

Class 23 + 33 - Domestic Heavy  
- Commercial Heavy



1023



2023



3023



4023



5023

Colors and contrast may vary due to the composition and structure of the fibers.