



VALCOURT SAFETY SYSTEMS

PRODUCT BOOK

valcourtsafety.com



TABLE OF CONTENTS





VALCOURT SAFETY SYSTEMS PRODUCT BOOK

On any given day, thousands of workers from our building services teams are suspended from buildings to perform facade maintenance and repairs. Keeping our workers safe as they work at heights drives our commitment to deliver services and solutions that ensure safety, longevity, and aesthetic integrity.

With a legacy of excellence and innovation, Valcourt Safety Systems (VSS) has helped building owners and property managers navigate the complex landscape of building maintenance and safety compliance for over 35 years. This product book is designed to walk you through the practical solutions we offer to protect lives by preventing falls and achieving fall protection compliance.

HERE'S HOW WE MAKE IT HAPPEN:

We begin by carefully investigating your property's health and how it complies with regulations set forth by the Occupational Safety and Health Administration (OSHA), the American National Standards Institute (ANSI), and local standards. Next, our engineers design a custom fall protection solution to meet your budget and address critical hazards. From there, our skilled technicians ensure the installation receives the utmost precision and care, followed by certification and annual inspections.





FALL PROTECTION: ENSURING SAFETY FROM THE TOP DOWN

OSHA's primary goal is to create safe working environments free of injuries and fatalities. Despite fall protection being the most cited violation, carrying hefty fines, as well as training and awareness programs centered on the dangers of working at heights, injuries and fatalities from workplace falls persist.

As a building owner, your liability includes providing a safe working environment for those who occupy and work in your building. Key focus areas for fall protection compliance include the path to the roof, walking surfaces on the roof, anchor points, and training. The best option is to eliminate the fall hazard altogether, but when that isn't possible, fall protection solutions can be highly effective.

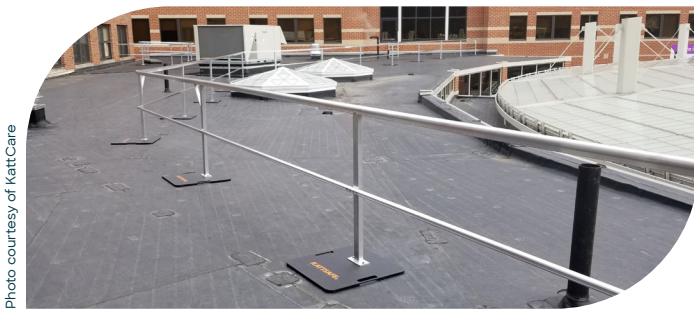
Photo courtesy of KattCare



GUARDRAIL SYSTEMS

Guardrail systems are a form of passive fall protection that creates a physical barrier to prevent workers from what would otherwise be unprotected edges. In addition to protecting edges, guardrail systems protect holes, pits, skylights, and roof hatches.

OSHA requires guardrail systems under **1910.29** to meet specific height and spacing requirements and be capable of withstanding a force of at least 200 lbs. applied in an outward or downward direction. Guardrails are often composed of corrosion-resistant materials requiring little maintenance and painted with colors like safety yellow to enhance their effectiveness. To handle varying building needs, temporary and permanent customized modular systems can be installed with counterweights or mounted to the roof.



Non-Penetrating Guardrail

This modular permanent system is OSHA-compliant and offers a roof-friendly weighted base that floats on the rooftop. The flexibility allows for unique barrier needs often found on rooftops.



Internal Wall Mount Guardrails

Engineered for robust perimeter safety, tailored to your building's architecture.



Metal Roof Mount Guardrail

This system is specifically designed for the unique needs of different metal roofs. Depending on the type of roof, it uses self-sealing hardware or clamps to secure the guardrail.





Photo courtesy of KattCare

+ External Wall Mount Guardrail

As its name suggests, this system mounts to an external wall, such as the parapet wall.

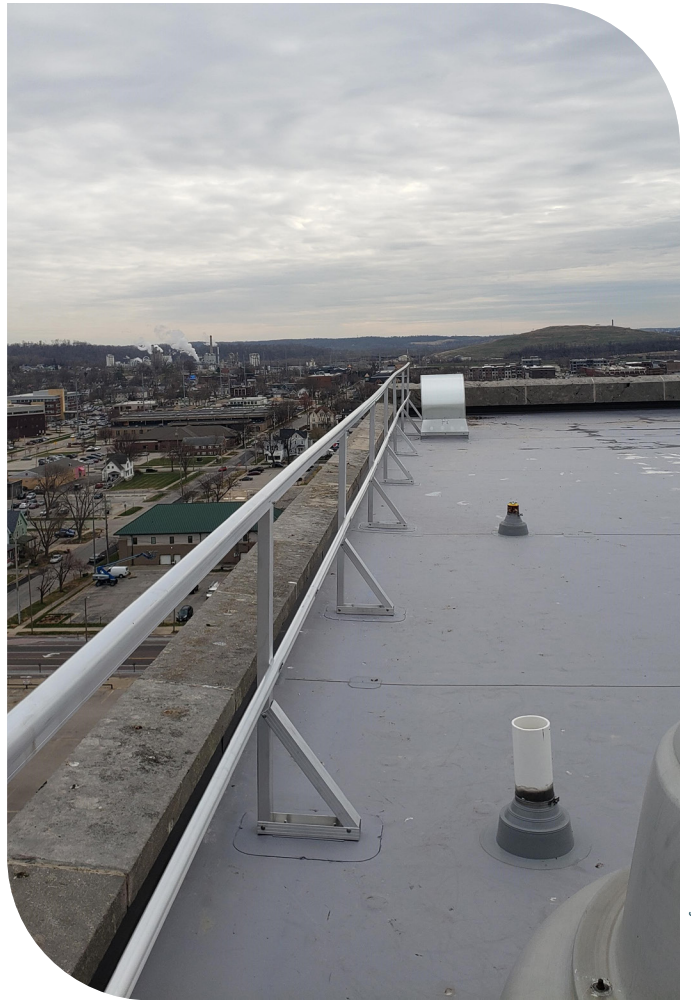


Photo courtesy of KattCare

+ Surface Mount Guardrail

Ideal for flat roofs, this aluminum system mounts to the roof using specific hardware approved by the top membrane companies.

VSS PRODUCT WARRANTY

Each solution has a 5-year warranty from the installation date and receives a post-install certification to align with OSHA regulations. Whichever guardrail suits your needs, you can rest assured that they comply with OSHA requirements [1926.501\(b\)](#) and [1910.28\(b\)](#), fulfilling your duty to safeguard workers from unprotected edges.





ROOF HATCH GUARDRAILS WITH SELF-CLOSING GATES

Roof hatch guardrails with self-closing gates offer a critical layer of safety for individuals accessing roof areas via hatches. These systems are designed to prevent accidental falls through open hatches by surrounding the perimeter with guardrails and integrating a self-closing gate that ensures the entry point is never inadvertently left open.

This product complies with OSHA standards [1910.28\(b\)\(3\)\(i\)](#) and [1910.28\(b\)\(3\)\(iv\)](#) and comes with a 5-year warranty from the installation date. It's made with lightweight, corrosion-resistant aluminum, available in custom colors, can be attached to any size roof hatch, and does not require a roof penetration for installation.



SKYLIGHT GUARDRAILS AND COVERS

Skylights are considered “holes” in your roof and require you to implement safety measures to prevent falls per [OSHA 1910.28\(b\)\(3\)\(i\)](#). Both covers and guardrails are adequate measures and do not require certification. Warranties vary based on the product. However, both meet compliance requirements of 1926.501 and 1910.28 as set forth by OSHA.





WARNING LINE SYSTEMS

Used to designate a work area 6 feet away from fall hazards to keep workers safe, these systems should be used when the work being performed is temporary and infrequent. This option meets the requirements of OSHA’s rule 1926.502(f)(2) (iii) and offers several other advantages, such as flexible installation options, a 5-year warranty, and does not require certification.

It’s important to note that warning line systems are considered the least effective measure in the **fall protection hierarchy**. The fall protection hierarchy defines an approach to help assess compliance solutions for your building and team and aids in selecting the most effective measures to protect workers.



FIXED LADDERS

Our fixed ladder systems are highly customizable and come in several variations and configurations, including angled, vertical, caged, and fold-down fixed ladders. This flexibility fits any building’s need while ensuring the highest level of fall protection safety, including grab bars and ladder fall arrest systems.

Our fixed ladder solutions comply with OSHA standards 1910.23, 1910.28, CAL-OSHA 3277, and ANSI A14.3. In addition, they are built with quality in mind, using high-grade structural aluminum, a 5-year warranty, and the option of powder coating.





MODULAR ACCESS SYSTEMS

Modular access systems are versatile and highly customizable solutions that provide safe rooftop access and prevent slips, trips, and falls. They include catwalks, stair and platform systems, ramps and bridges, and crossover stairs to allow workers to navigate safely while providing robust protection against falls.

Made with corrosion-resistant aluminum and backed by a 5-year warranty, these systems are pre-engineered with a no-weld system, making them a flexible and cost-effective option to meet and exceed OSHA standard 1910.



TRAVELING FALL RESTRAINT

A travel fall restraint system is a highly effective fall prevention system that allows workers to access and perform work within the area that is six feet from the roof edge or fall hazard. OSHA requires workers who use this type of system to complete specific training on the system's use, components, and inspection.

At Valcourt, we take pride in equipping your workforce with the knowledge and skills to mitigate risks and prevent accidents. Our comprehensive training covers essential techniques, best practices, and the latest safety standards, ensuring your team is well-prepared to tackle any challenge.





FACADE ACCESS AND SUSPENSION SYSTEMS

Performing routine building maintenance such as window cleaning, facade inspection, and repairs requires the use of suspended access equipment. These systems anchor to the building's roof, allowing workers to move vertically and horizontally.

Building owners must ensure anchor points meet inspection, testing and certification, and spacing requirements to support the system and fall protection systems under OSHA regulations.

We offer a turnkey service for anchorage system compliance, including design, testing, and certification of all anchor installations.



ROOFTOP ANCHORAGE SYSTEMS

Rooftop anchorage systems are a key component to providing facade access and require a high level of professional engineering to ensure the system incorporates the proper anchor and its method of attachment to the structure. The professional engineer must also verify the capability of the structure to support the loads from the anchors.

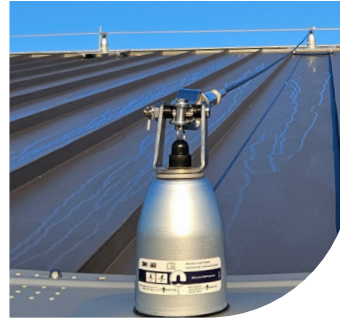
In addition, all anchorage must comply with OSHA's **Walking-Working Surfaces Standard**, which requires supporting at least 5,000 pounds for each employee attached in any direction. Once installed, anchor points require annual inspections, testing, and certification every 10 years by a qualified person, such as a structural engineer.



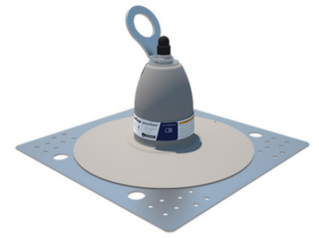
FALL RESTRAINT ANCHORAGES

Fall Restraint Anchorage systems are often used on standing seam metal roofs or in locations where exposure to fall hazards is not a regular occurrence. These systems are designed to prevent a person from falling and come in many variations, such as:

- Single point tie-off anchorage mounted to the roof or counterweighted to avoid a roof penetration.
- A system of several anchorage points connected by stainless steel cable or track system allowing a worker to travel and stay connected.



Cable System



Single Point Tie Off



Track System

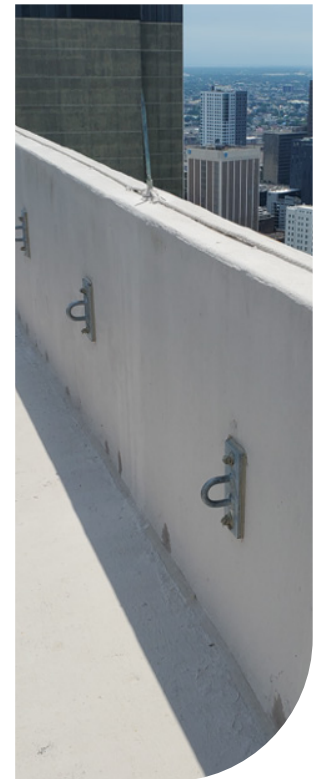
FALL ARREST ANCHORAGES

Fall arrest anchorage systems are designed to protect a person from contacting the ground or lower level after a fall has occurred. In addition, these systems are used for Rope Descent Systems (RDS) and to directly rig suspended access equipment.

Fall arrest anchorages can be a post that sticks up out of the roof or a flush mounted unit that attaches to a solid concrete wall or steel dunnage on the roof of a building.



Post Style Roof Anchor



Flush Mount Anchor





SUSPENDED ACCESS SYSTEMS

These systems are beneficial for tasks such as window cleaning, facade maintenance, painting, or other exterior building work. Warranties for rooftop anchorage systems and suspended access support systems vary by product, as do OSHA requirements. Building owners must ensure that the rooftop access method they provide for workers is safe and compliant with OSHA regulations. For complex systems such as these, it pays to leverage expertise.

Davit Arm System

This system consists of structurally rated pedestals permanently fixed to the building, to which a compatible arm can be pinned to suspend a powered scaffold platform. It allows for suspended scaffolds to be positioned and raised on a wide variety of building facades.

Tieback Anchors

Works with the Davit Arm System to provide a secondary anchor point for suspended systems. These anchors provide a fail-safe and secure platforms against lateral shifts and wind to maintain stability.

Monorail System

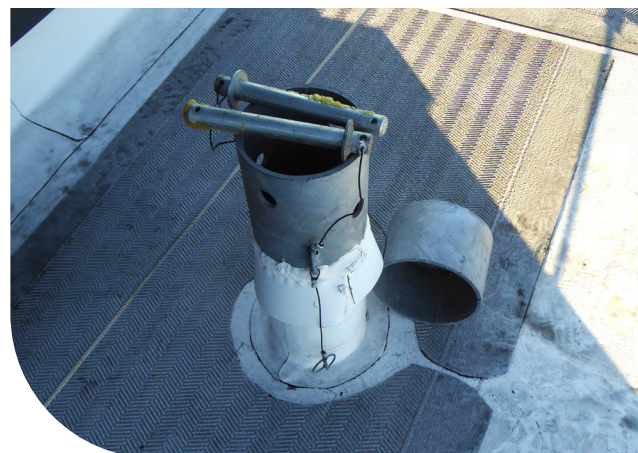
A monorail system uses a track to transport platforms, single-man baskets, and bosun chairs around the building's exterior and interior.

Rigging Sleeves

This system feeds anchored lines through a sleeve to provide access to lower levels via platforms, baskets, or bosun chairs.

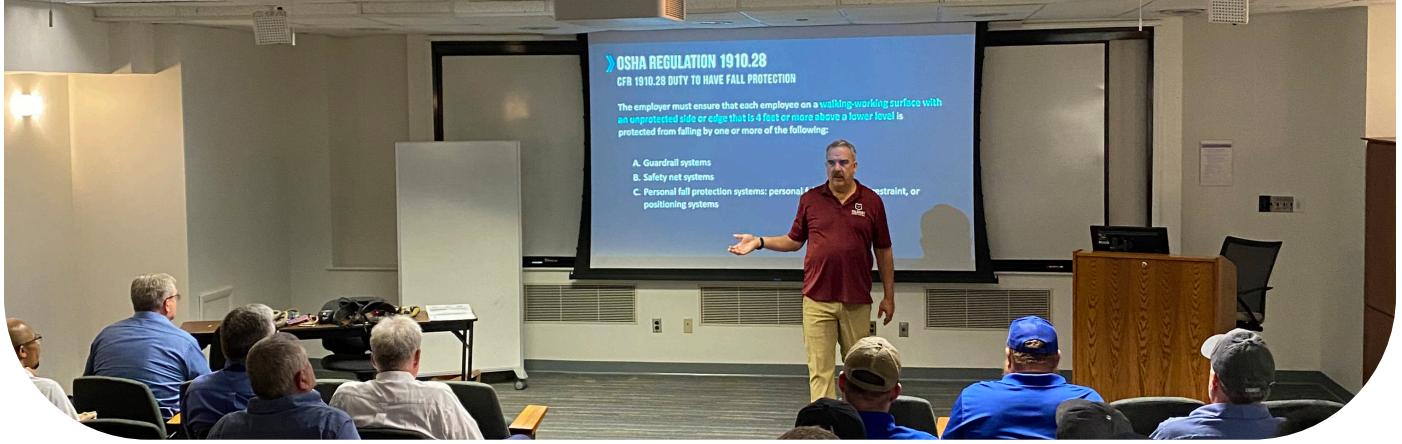


Davit Arm



Rigging Sleeves





SECTION 3

TRAINING & FALL PROTECTION SEMINARS

OSHA requires employers to **provide training** to every employee exposed to fall hazards. This training improves employees' awareness of the dangers of working at heights, helping them make the right decisions, such as inspecting and wearing their personal protective equipment (PPE) properly, and following safety procedures. Training is critical in fall protection safety, ensuring workers understand the severity of their decisions and the risks they will encounter.

Our team of seasoned experts offers fall protection training and seminars. We take pride in equipping your workforce with the knowledge and skills to mitigate risks and prevent accidents. Our comprehensive training covers essential techniques, best practices, and the latest safety standards, ensuring your team is well-prepared.

We offer several options to enhance fall protection safety. We believe in the power of practical experience, ensuring your team is ready to tackle safety challenges head-on.



Awareness Training

This training exposes workers to the nature of fall hazards, the use of passive and active fall protection systems, and their role in maintaining a safe work environment.



Hazard Recognition and Abatement

Leverages industry expertise to help workers spot hazards of working at heights while providing them guidance on mitigating risks.



User Training

Workers must know how to use and care for their fall protection equipment properly. Failure to wear PPE as intended can have severe consequences. Employees who complete user training should have the necessary skills to inspect their own PPE properly. OSHA requires employers to “retrain” employees when changes make previous training obsolete, for instance, by implementing a new fall restraint system. Employers must also retrain any employees they suspect lack the knowledge after being involved in a safety incident, or skill to comply with safety standards.

Invest in the safety and productivity of your employees with our top-notch fall protection training. Partnering with us enables you to build the pathway to creating a safer work environment and fostering a culture of safety within your organization.



REVIEW YOUR ROOFTOP SAFETY: FALL HAZARD ASSESSMENT TOOL

The first step in mitigating fall hazards is to complete a thorough review of your walking-working surfaces and worksite processes. That's why we created our **Fall Hazard Assessment Tool** to facilitate your path to compliance. This mobile-friendly resource empowers you to detect and document potential fall hazards specific to your rooftop environment.

Simply walk through a series of targeted questions focused on the most common and frequented areas of your roof. With each answer, you're taking strides towards a safer workplace.

WHAT TO EXPECT:

- **Example Photos**

Compare photos to your worksite for insights on fall hazards and solutions.

- **Notes Section**

Document problem areas on your rooftop for easy future reference, especially helpful for budgeting.

- **Actionable Next Steps**

Receive an emailed results summary and choose to be contacted by our experts for a Fall Protection Consultation.



Access the **Fall Hazard Assessment Tool** here for an easy step-by-step guide to review potential risks on your rooftop.



valcourtsafetysystems.net 

TURNKEY SAFETY SOLUTIONS WITH VALCOURT SAFETY SERVICES

At Valcourt Safety Systems, we simplify safety. Our turnkey service covers everything from system design to installation and certification. Our expert team takes the hassle out of complying with OSHA regulations while ensuring workplace safety. Contact us today to learn how our expertise can serve you.

[Schedule a Consultation](#)