

Communicator

Published by the Cannon Township Board, Kent County, Michigan

Winter 2008

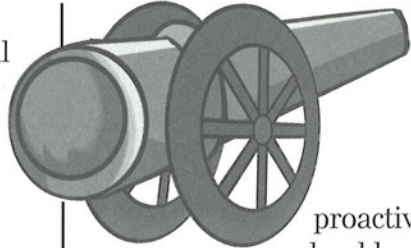
Capital Improvement Plan For Township Sewer Infrastructure

**Pete MacGregor,
Supervisor**

Much of the Township's wastewater collection system and sanitary lift station components were constructed in the 1970s. Many of the system's components (within the 12 lift stations) are now over thirty years old and have reached or are nearing the end of their service life. To address current and long-term planning and economic needs of the community,

the Township Board requested that a Capital Improvement Plan (CIP) be established so as to assess the real conditions of the sewer system. The result of this plan, which was completed this last November, has established strong supporting data to analyze the quarterly rate structure. Who will this affect? It will affect the Township sewer customers in the "Lake Districts" that run primarily along Belding Road.

There's a fine tuned balance between cost versus risk and this has been the focus of the rate analysis. The challenging issue our Sewer Committee had to answer was "how



proactive should the Township be to reduce risk and what will it cost the users to reduce that risk?" By being proactive with the sewer system upgrades, the Township can considerably reduce current risk of infrastructure failures or system catastrophes, as well as minimize future costs; (reacting to sewer failures costs approximately 50% more to repair than planned repairs). To be proactive, and put the plan into action, a rate increase on quarterly sewer bills must be implemented.

Cannon Township

The Cannon Communicator, Winter 2008

From the Supervisor continued from page 1

Provided with a clear financial analysis and sound engineering data the Township Board has evaluated all facets and will implement a sewer Capital Improvement Plan. The current \$70 per quarter, set in 2005, has been adequate to cover the yearly operation and maintenance of our sewer system. This rate is also sufficient to cover Cannon Township's cost of operation for the new North Kent Sewer Authority's wastewater plant, (named PARCC SIDE Clean Water Plant). The dollars from an increase in quarterly rates, which will be phased in over five to six years, will be allocated toward capital improvement items within our own community.

The plan is to raise rates gradually, starting from \$20-\$25 more per quarter and as we get closer to the years 2013-14, increasing another \$10 to \$15 more per quarter. This will allow the Township to implement approximately \$2.8 million of capital improvements in the first five to six years of the Capital Improvement Plan. The CIP will extend out for 25 years, with a plan review and update every 5 years.

It is important that our Township sewer users understand that the least expensive way to perform capital improvement is to be proactive. Reacting to failures is not only financially devastating, but as recently experienced at Lake Bella Vista, environmentally and emotionally upsetting. Our Sewer and Finance

Committees have made every effort to balance risk and cost. The rate increase justification is based on upgrading and improving the system by eliminating the "high risk" items within the system.

It should also be understood that even with the new rate, Cannon Township sewer customers have close to the lowest sewer rate in all Kent County, comparatively speaking. The Board believes by taking a proactive approach toward these capital needs, the rate increase will be manageable as opposed to reacting to the risk of tragedy and the cost of a disaster. As always, if you would like additional information regarding the Capital Improvement Plan or the sewer rate analysis, please contact me at the Township at 874-6966 or email pmacgregor@cannontwp.org.

**Best regards,
Peter MacGregor**

Planning For The Future

This year, the Planning Commission took advantage of the slowdown in development to focus on planning for the future. Key areas addressed were the Zoning Ordinance, Master Plan update and the Town Square village development.

Zoning Ordinance. The Planning Commission worked to revise the Zoning Ordinance. Specifically, revisions required by the Michigan Zoning Enabling Act were made as well as revisions to Planned Unit Developments (PUDs), site plan submittal requirements, overlay districts and lot area calculations. Additionally, the entire ordinance has been reorganized with charts, graphs and tables added to make the ordinance more user-friendly for all those seeking to develop property in our Township. The Planning Commission anticipates submitting this to the Board for approval in early 2009.

Town Square. This year, the Township staff, Planning Commission and Board have spent a considerable amount of time addressing issues related to the Town Square Village development. Time was spent ensuring infrastructure development was completed correctly and in a timely manner. Final construction of the sidewalk and crosswalks at the intersection of Belding Road and Meyers Lake Avenue is being completed. The payoff for the Township's work is having a solid infrastructure in place for commercial and residential development to proceed once the economy recovers.

Master Plan Updates. The Planning Commission worked this year to begin an update of the Master Plan. A few of the areas being addressed are the moderate density area, M-44 scenic overlay and the potential development of the M-44 commercial corridor just west of Bostwick Lake.

Development continues to occur. Recently, we worked with developers to expand wireless service coverage while minimizing the visual impact of towers on our rural landscape. We were able to work with a carrier to alter their plans for a 250' lighted tower to a 199' unlighted tower by moving the location less than 1/2 mile.

Jim Mapes-Pearson, Planning Commission Chairman

Cannon Township Sewer Rates

Previous to April 1, 2001	\$40
Beginning April 1, 2001	\$43
April 1, 2002	\$44
April 1, 2003	\$45
April 1, 2004	\$46
April 1, 2005	\$47
October 1, 2005	\$60
April 1, 2007	\$70

Recreation Plan Update

Led by the efforts of the Cannon Township Recreation Committee and consultant Pat Cornelisse, Cannon Township is updating the existing Recreation Plan. In order to qualify for grants, the State of Michigan requires an update every five years. Our current plan was prepared in 2002, so it is time for a new one.

To begin the effort, we will have a public meeting to get input from the citizens of Cannon Township. Because we are anticipating a crowd, we are renting the cafeteria at the East Rockford Middle School for the evening of January 22nd. So, everyone, please mark your calendars for:

**THURSDAY, JANUARY 22ND
AT 7:00 PM
AT THE EAST ROCKFORD
MIDDLE SCHOOL CAFETERIA**

This meeting will be your best opportunity to have a say in what happens to the monies you approved for the recreation millage. Do we build more trails? If so, where? Do we add more parkland or make improvements to the Cannon Township Center property? Or do you have other creative ideas that you'd like to share?

The best way to express yourself is to attend the meeting. But if you can't, please write or email me with your thoughts. Also, remember to check the web page www.cannontwp.org for other opportunities to get involved.

**Bonnie Blackledge –
bonnies@cannontwp.org**

REMINDER: All docks on inland lakes shall be removed from the water no later than December 15, 2008 (excludes Sunfish Lake).

From the Assessing Department by Matt Frain, Assessor

Understanding that the housing market is declining and taxes seem to be increasing, I thought that we should try to make sense out of what is happening with the property taxes for 2009.

In 1994 Michigan voters approved the constitutional amendment known as Proposal A.

Prior to Proposal A, property taxes were based upon State Equalized Value (SEV). With the implementation of Proposal A, property taxes are now based upon Taxable Value.

Each year, the Assessing Office must calculate the SEV for every property based upon the time frame as outlined by the State Tax Commission. A property's taxable status is determined as of December 31, which is called Tax Day. Additionally, each property

has a Capped Value. Capped Value is calculated by multiplying the prior year's Taxable Value, with adjustments for additions and losses, by the CPI (Consumer Price Index) as calculated by the State of Michigan and cannot increase more than 5%. For 2009, the CPI has been calculated at 4.4%.

Taxable Value (TV), which property taxes are based on, is defined as the lower of State Equalized Value or Capped Value.

Generally speaking, this means that unless the current year SEV is less than the previous year Taxable Value multiplied by the CPI, the current year's Taxable Value will increase by the CPI.

**If you have any questions please contact the
Cannon Township Assessing Department.**

SEV = 50% of True Cash Value

Capped Value =

(Prior TV - Losses) x (1+CPI*) + Additions

*Percent of change in the rate of inflation or 5% whichever is less, expressed as a multiplier.

Taxable Value =

The lesser of State Equalized Value or Capped Value unless there is a transfer of ownership.

Approximate property tax increases are:

2008 TV	CPI	2009 TV	TV Increase	PRE Millage Rate	\$ Increase
\$50,000.00		\$52,200.00	\$2,200.00	0.0303935	\$66.87
\$100,000.00		\$104,400.00	\$4,400.00	0.0303935	\$133.73
\$150,000.00		\$156,600.00	\$6,600.00	0.0303935	\$200.60
\$200,000.00		\$208,800.00	\$8,800.00	0.0303935	\$267.46
\$250,000.00		\$261,000.00		0.0303935	\$334.33
\$300,000.00		\$313,200.00		0.0303935	\$401.19
\$400,000.00		\$417,600.00		0.0303935	\$534.93
\$500,000.00		\$522,000.00		0.0303935	\$668.66

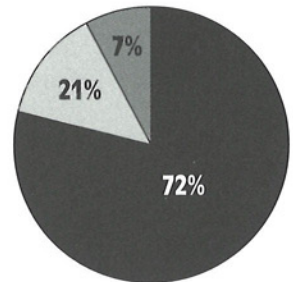
How Are Your Property Taxes Spent?

Below is an example of a home worth \$200,000 and how the yearly property tax is divided up between the State of Michigan, Kent County and Cannon Township. This is based on 2008-9 taxes and is only a model to show you how the money is allocated after you write your check to Cannon Township.

House worth approximately \$200,000
with a taxable value = \$100,000
Total property tax = \$3040.00

■ 1 ■ 2 ■ 3

Property
Tax Breakdown



Itemized Schedule

% of Total Property Tax

Rockford Public Schools.....	\$949.....	31%
State Education	\$600.....	20%
GR Community College	\$179.....	6%
Kent Intermediate Schools.....	\$469.....	15%

Total Education..... \$2,197 72% (1)

Kent County Operating.....	\$428.....	14%
Kent County Jail.....	\$79.....	3%
Kent County Senior Millage.....	\$32.....	1%
Kent District Library.....	\$88.....	3%

Total County \$627 21% (2)

Cannon Operating	\$84.....	3%
Cannon Fire Millage	\$94.....	3%
Cannon Recreation.....	\$38.....	1%

Total Township..... \$216 7% (3)

Estimated Property Tax @ \$100,000 .. \$3,040 per year 100%



Wintertime Fun for Kids and Everyone!



by Georgia Donovan

Once again the Izaak Walton League will be holding their annual
Winterfest at their Conservation Center, 5641 Myers Lake Rd.

The date will be January 24th, from 10:00 am - 3:00 pm.

Events might include, depending on the weather, ice fishing, snow games, cross-country skiing, archery, candle-making, animal tracking, bird-feeder making, and of course, eating.

Come join us for old-fashioned winter-time fun. Explore our 39 acres, Armstrong Creek, and our Conservation Clubhouse. See the solar-power demonstration station.

We welcome our neighbors and friends to this free event!

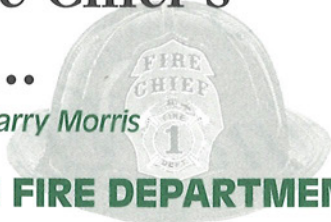
Watch for parking suggestions; if necessary we'll run a shuttle
from the Township Center.

*For more information call
866-1061*



The Fire Chief's Report...

By Fire Chief, Harry Morris



FROM THE FIRE DEPARTMENT:

Good news

The Cannon Township Fire Department is rated by the Insurance Services Office (ISO). Many fire insurance companies use the ISO rating as one factor in setting the amount of premium that is paid on a particular property. The ISO makes an independent evaluation of many departments every ten years or when major changes have occurred. Ratings of departments go from a Class 1 (the best) to Class 10 (unprotected). Recently our Department was revaluated by the ISO under rigorous conditions. The result of this is that our rating has been reduced from a 9 to a 5 in our non-hydrant areas. Therefore we are now currently rated a Class 5 for the whole Township (both hydrant and non-hydrant areas). This rating change may mean that your insurance premium could be reduced if you live in a non-hydrant area. Please contact your insurance carrier to find out how this ISO change affects you.

Congratulations

Congratulations goes out to firefighter Bob Schmitt. Bob just received his Michigan EMS Instructor-Coordinator license. Including Jim Allore, this brings our list of Michigan

licensed I/C instructors to two on our department. Great job, Bob!

Ice Safety

Winter has arrived in West Michigan, and with it, falling temperatures, snow and ice. Here are some safety tips offered by the Department of Natural Resources:

Before venturing out on a frozen lake or pond keep in mind, There is no such thing as 100% safe ice!

Recommended minimum ice thickness:

4" of new clear ice is the minimum thickness for travel on foot 5" is the minimum for snowmobiles and ATVs (Remember that these thicknesses are merely guidelines for new, clear, solid ice. Many factors other than thickness can cause ice to be unsafe).

If you plan to go ice fishing, check for known

continued from page 8

thin ice areas with a local resort or bait shop. Test the thickness yourself using an ice chisel, ice auger or even a cordless 1/4 inch drill with a long bit.

Go out with a buddy and keep a good distance apart as you walk out. If one of you goes in, the other can call for help (it's amazing how many people carry cellular phones these days). The companion can also attempt a rescue if one of you is carrying rope or other survival gear.

Refrain from driving on ice whenever possible. Snowmobiles and ATVs need at least 5 inches.

Don't "overdrive" your snowmobile's headlight.

At even 30 miles per hour, it can take a much longer distance to stop on ice than your headlight shines. Many fatal snowmobile through-the-ice accidents occur because the machine was traveling too fast for the

operator to stop when the headlamp illuminated the hole in the ice.

Wear a life vest under your winter gear.

Or wear one of the new flotation snowmobile suits. And it's a good idea to carry a pair of ice picks that may be homemade or purchased from most well stocked sporting goods stores that cater to winter anglers. It's amazing how difficult it can be to pull yourself back onto the surface of unbroken but wet and slippery ice while wearing a snowmobile suit weighted down with 60 lbs of water. The ice picks really help pulling yourself back onto solid ice.

Ice Skating Safety:

Wear skates that fit comfortably and provide enough ankle support to keep you on your feet. Have the blades professionally sharpened at the beginning of each season. Always check for cracks, holes and other debris on the ice. Wear warm clothing and rest when you become tired or cold. Never skate alone. Always supervise children near lakes, ponds, and creeks. Educate children of the danger of ice by taking them to sites and advising them of places they must avoid.

Family Safety:

Remind children that under no circumstances should they go onto a frozen lake to chase a ball or save a pet. Always keep your pets on a leash. Many rescues are the result of dog owners trying to rescue their dog that walked out onto the ice.

What if a companion falls through thin ice?

REACH, THROW, GO

Try to reach them with something - rope, ladder, stick, ski pole, etc. Throw them something to help they stay afloat

continued on page 10

continued from page 9

- a cooler, plastic milk/soda bottles, spare tire, etc. Go call 911. (It's amazing how many people carry cell phones). Wait for emergency responders so you can take them to the exact location of the victim

What if YOU fall in?

Try not to panic. Instead, remain calm and turn toward the direction from which you came. Place your hands and arms on the unbroken surface of the ice (here's where the ice picks come in handy - screwdrivers make great ice picks). Work forward on the ice by kicking your feet. If the ice breaks, maintain your position and slide forward again. Once you are lying on the ice, don't stand - Instead, roll away from the hole. That spreads out your weight until you are on solid ice. This sounds much easier than it really is to do. The best advice is don't put yourself into needless danger by venturing out too soon or too late in the season.

To Call or Not To Call 911...

If you are wondering if you have an emergency or not, err on the side of caution by calling 911 rather than your fire department. The dispatchers that handle 911 calls, are highly trained and with your help, determine if there is a true emergency and will be able to dispatch the appropriate emergency personnel without delay.

With the winter months upon us, take a minute and review the emergency plan for your home and car. Check to make sure your smoke and carbon monoxide detectors are working. Replace batteries in your smoke and carbon monoxide detector.

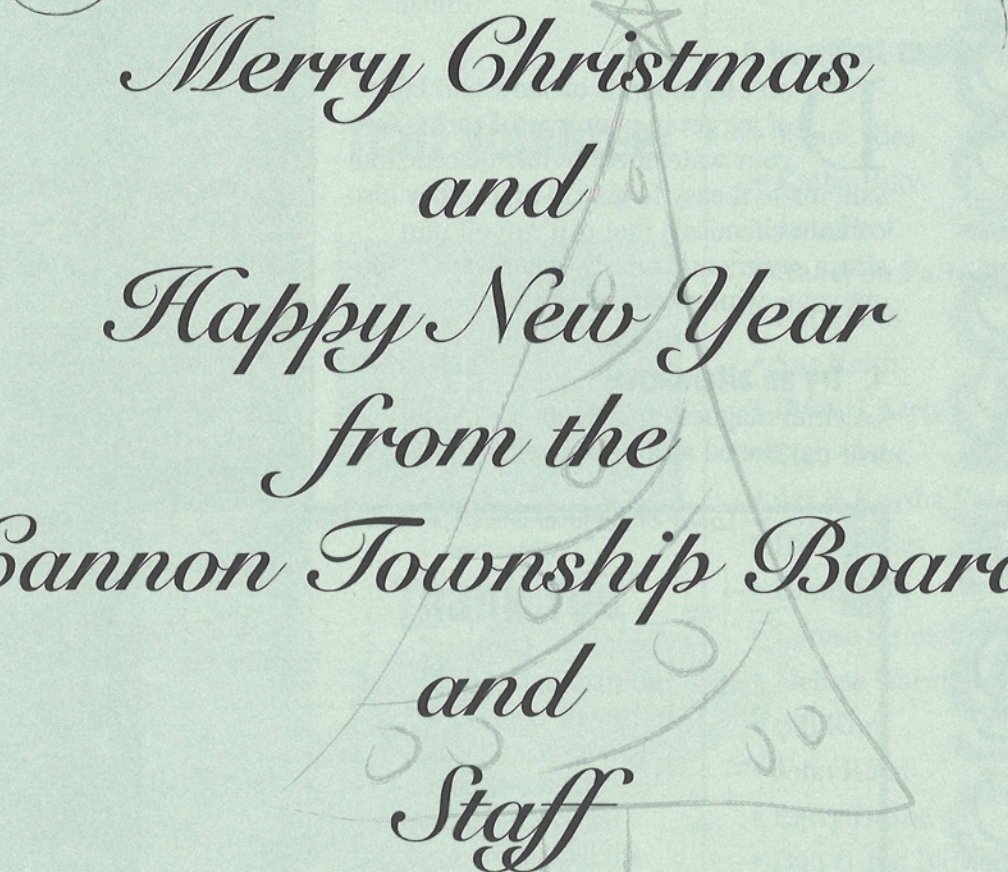
And remember to have a wonderful and safe Holiday Season.

From all of us at the
Cannon Township
Fire Department,

Happy Holidays!



**The
Historical
Museum
Is Closed Until
May**



*Merry Christmas
and
Happy New Year
from the
Cannon Township Board
and
Staff*

WATERSHED PAGES

By Kim Sapkowski

Be Kind to Your Watershed This Winter

Don't let mounds of snow and layers of ice get in your way of caring for your watershed. While deicers, like salt, make it easy to get rid of ice, they also contain chemicals that can run off into storm sewers and nearby waterways. Here are some winter watershed tips:

1. Try an alternative.

Calcium magnesium acetate (CMA) was developed as a deicing alternative

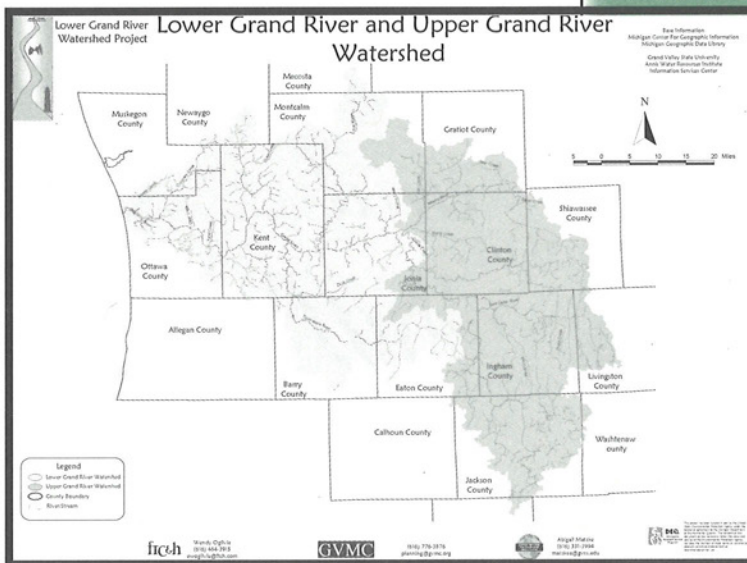
because it has fewer adverse environmental impacts than salt and doesn't cause corrosion. Although CMA is more expensive than rock salt, it is recommended for environmentally sensitive areas.

2. Reduce your salt use.

By limiting the amount of salt you use on sidewalks and driveways, you can reduce the amount of polluted snow melt washing into waterways.

3. Use that shovel!

The most important step in deicing is to remove as much ice as possible before applying salt. Use a shovel to break up ice.



continued from page 12

Did you Know ...?

Just when you can't stand another inch of snow or glaze of ice, remember that the very spot you are sitting was once covered with a sheet of ice one mile thick! All of Michigan, including lakes, beaches, streams and abundant fresh water, are a result of glaciers. The last glaciers retreated in Michigan about 12,000 years ago.

The ice sheet that covered Michigan advanced and retreated many times and in doing so, ripped and deposited swaths of earth and created drainages. One of those drainages is thought to be the ancestor of the Grand River and was much wider than the river is today. Once the rush of ice, water and sediment came to a standstill, the Grand River Watershed was left behind. Cannon Township is part of the Grand River Watershed (which is divided into the Lower

and Upper Grand River Watershed. We are located in the Lower Grand. The sub-watersheds - Rogue River and Bear Creek - are also part of Cannon Township).

Trail Volunteer



Thank You

Many thanks to the Cannon Township Trail Volunteers who completed their first season November 1. Volunteers picked up trash and debris along the new trail. Some shoveled and swept sand washouts after heavy rains. The trail volunteers will start

up again in Spring 2009. If you would like to be a trail volunteer next year, please call **Kim Sapkowski** at 874-6966.

A heartfelt thanks to:

- Janice Ries
- Kathy Rups
- Jane Post
- Nancy Jo Partridge
- Pat Smith
- Sue Keith
- Brian J. Seely
- Stan Hone
- Art & Keasha Palmer
- Dick Davies
- Brian Todd
- Louise Swiatek
- Melissa Warmbier
- Bill Kury
- John Rand
- Larry Deane
- Dan & Jan Bidwell
- Molly Moore
- Jennifer Post
- Terry Winslow
- Mitzi Stolicker

continued from page 13



Christmas Tree Recycling

Bring your Christmas tree to Cannon Township Center 6878 Belding Road

On Saturday, January 3

And

Saturday, January 10 from 9 a.m. – 3 p.m.

The Rockford High School National Honor Society will be on hand to assist you. Please check your tree for stray ornaments, lights, or wire before you drop it off.

We cannot accept wreaths or trees with wire.



Dates To Remember...

Winter 2008 15

2008

Dec 24,25,26 CHRISTMAS HOLIDAY – OFFICE CLOSED

Dec 30.....Quarterly Sewer Bills Mailed

Dec 31.....NEW YEAR'S EVE HOLIDAY – OFFICE CLOSED

2009

Jan 1NEW YEAR'S DAY HOLIDAY – OFFICE CLOSED

Jan 3 & 10.....Christmas Tree Recycling 9:00 am – 3:00 pm

Jan 12Township Board Meeting – 7:00 pm

Jan 13Planning Commission Meeting – 6:00 pm

Jan 20Zoning Board of Appeals Meeting – 7:00 pm

Jan 22RECREATION PLAN PUBLIC INPUT – EAST ROCKFORD MIDDLE SCHOOL – 7:00 pm

Jan 26Township Board Meeting – 7:00 pm

Jan 31Quarterly Sewer Bills Due

Feb 9Township Board Meeting – 7:00 pm

Feb 10Planning Commission Meeting – 6:00 pm

Feb 142008 TAXES DUE – Penalty begins Feb 17, 2009

Feb 16Assessor's Week – 1:00 pm – 4:00 pm

Feb 17Assessor's Week – 9:00 am – 12:00 pm

Zoning Board of Appeals Meeting – 7:00 pm

Feb 18Assessor's Week – 9:00 am – 12:00 pm

Feb 21Assessor's Week – 9:00 am – 12:00 am

Feb 23Township Board Meeting – 7:00 pm

Feb 27Last Day to obtain 2009 Dog Licenses at Township Office

Feb 28Deadline for Collection of 2008 Taxes

March 9.....Board of Review – 2:00 pm – 5:00 pm, 6:00 pm – 9:00 pm

Township Board Meeting – 7:00 pm

March 10.....Planning Commission Meeting – 6:00 pm

March 12.....Board of Review – 9:00 am – 12:00 pm, 1:00 pm – 4:00 pm

March 17.....Zoning Board of Appeals Meeting – 7:00 pm

March 23.....Township Board Meeting – 7:00 pm

**Any changes or additions to the calendar can be found on our web site –
www.cannontwp.org under "Township Events."**

Clerk's Corner...

By Bonnie Blackledge



2008 Election Wrap up:

This was a busy year for the Clerk's Department preparing and administering four elections. The controversial January Presidential Primary generated a turnout of 27.32%, the May School Election brought in 21.59%, and the August Primary turnout was 22.78%. I must admit that I was extremely surprised – and disappointed – with the percentage in the August Primary. The turnout at these three elections was not at all what I expected. Usually school election turnout is lower and the 2004 August primary was 44.5%.

The November General Election was truly the best run one since I've been in office. Everything went so smoothly. We did our best to prepare thoroughly and it paid off. We had more voting stations and more workers. The Chairpersons met with me ahead of time

to come up with the best way to set up their precincts. Even with a turnout of 82%, lines were manageable and people were satisfied. Every one of our precincts had an accurate reconciliation between ballots tabulated and the number of voters.

One of our biggest successes during this election cycle was the piloting of the Electronic Poll Book in Precinct 4. With the software installed on our laptop computer, we were able to scan the voters' drivers' licenses, record the fact that they voted, and assign a ballot number. After the election, this information was able to be uploaded into our voter files in a matter of seconds. When approved by the legislature, this will allow us to eliminate one or possibly two poll workers and will save hours of time inputting voter history.

continued from page 16

The following is a summary of the turnout for the November 4th Election in Cannon Township:

Precincts	1	2	3	4	5	6	AV 1	AV 2	Total
BALLOTS (voted at polls)	1076	1065	919	1150	816	1040	1082	1058	8206
ABSENT VOTER	347	352	323	429	368	321			2140
NUMBER OF VOTERS	1423	1417	1242	1579	1184	1361			8206
TOTAL REG. VOTERS	1715	1793	1497	1907	1460	1625			9997
PERCENT TURNOUT	82.97	79.03	82.97	82.80	81.10	83.75			82.08

Looking towards 2009:

Since I'm only anticipating one election in 2009, I've decided to tackle a project of developing a system to put the Township records on an approved retention schedule. Currently, we keep a lot more documents than we need to. This new system will allow us to regularly dispose of old records that we are no longer required to keep.

In addition to that project, the Recreation Plan update will take up a lot of my time. Please read the article on that process elsewhere in this edition and come to our public input meeting on January 22. Here's to a great new year...

**Cannon Township's Website is
www.cannontwp.org
Please make us one of your favorites.**

The following article was included in the last edition of "In the Know 'Bits'" Kent County's waste awareness mini-newsletter. For more information, check their website at: www.accesskent.com/YourGovernment/Publicworks/newsletter.htm

IN THE KNOW

Winter Bits 2008 Keep Those Pipes Clean This Holiday Season

by Raquel Fagan, Executive Editor of
Earth911.com
(Partially reprinted from Earth911.com)

Holidays are a perfect time to bust out the china and cook a meal fit for royalty. Don't be afraid to embrace your culinary spirit.

Responsible cleanup of that festive meal, along with kitchen composting, is as important as

the dessert. Keep in mind that a deep-fried holiday turkey can generate up to five gallons of oil before the turkey is done. That is a lot of leftover cooking oil, so what's next?

Your first thought might be to dump the remaining oil down the drain, since after all, it's a liquid. Resist the temptation, as not all liquids are created equal. When dumped down the drain, cooking oil (especially cooking grease) can clog up your pipes, back up sewer & septic systems and create havoc at the sewer treatment plant where it will end up.

In addition to the damage you can do in your kitchen, dumping it down a storm drain would be even worse. That sends it straight into our lakes, rivers, streams and to the ocean as an unwelcome pollutant affecting animal life.

continued from page 18

The Art of Disposal

Depending on how much oil you have used, disposal methods vary.

- A small amount of cooking oil can first be absorbed by adding kitty litter, or some other solid absorbent material, like shredded paper.
- For larger amounts, store in a container till cooled and reuse. Or, you can seal it and throw it away in the trash. (Note to Kent County residents: It is illegal to put any liquid in your trash. Solidify oil before putting in your trash.)
- Hot grease can be poured into a small metal can to solidify and then thrown out.
- You might even check with the owners of your favorite restaurant to see if they would take the oil off your hands.

3 Tips for Better Recycling

Know Before You Throw: If you're not sure whether something belongs in the recycling bin but you toss it in anyway, it could be trashed at the recycling facility. There is annually more than 1.4 million pounds of trash removed from the recycling process at the Kent County Recycling Center in downtown Grand Rapids. When in doubt, either throw it out or give us a shout! recycle@kentcountymi.gov or (616) 336-2570.



Wash Your Containers & Remove

The Caps: Unless your container held plain old water, it likely has a food residue left inside when it's empty. For the same

reasons you wouldn't want these sticky, slimy residues on your kitchen counter, they're not welcomed at the recycling center. Everything that goes in your recycling bin should be clean and have the caps removed so the insides can dry out.

Save Some Space:

We know you're trying to recycle as much as possible and sometimes the bin is just too small for all your stuff. Try flattening your recyclables to make them fit. Step on it and squish it down — just watch for sharp edges on metal cans and glass bottles!

Taxes are due by February 14th
A drop box is available for your convenience

Clip and Save E-mail Addresses

Supervisor, Pete MacGregor:pmacgregor@cannontwp.org
 Clerk, Bonnie Blackledge: bonnies@cannontwp.org
 Treasurer, Jim LaPeer: jlapeer@cannontwp.org
 Trustee Deb Diepenhorst:..... ddiepenhorst@cannontwp.org
 Trustee Dick Davies:..... rrd8565@hotmail.com
 Trustee Steve Grimm:steve@slgrimmmpc.com
 Trustee Rob McBrien: Rj.mcbrrien@helmholdt.com
 Deputy Clerk, Nancy Popma:nancyp@cannontwp.org
 Deputy Treasurer, Milissa Soderstrom:milissas@cannontwp.org
 Zoning Administrator, Christine James:christinej@cannontwp.org
 Code Enforcement Officer, Bob Devereaux:zeo@cannontwp.org
 Administrative Assistant Sue Clarin:..... suec@cannontwp.org
 Watershed Assistant, Kim Sapkowski:ksapkowski@cannontwp.org
 Fire Chief, Harry Morris:..... Chief@Cannontwp.org
 State Representative, Tom Pearce: tompearce@house.mi.gov
 Phone: 1-888-414-3684
 State Senator, Mark Jansen:senmjansen@senate.michigan.gov
 Phone: 1-800-774-1174
 Congressman Vern Ehlers: web site: www.house.gov/ehlers
 Phone: 202-225-3831
 Cannon Township Web Site: www.cannontwp.org
 Kent County Web Site: www.accesskent.com
 State of Michigan Web Site: www.michigan.gov



Township Board

Supervisor Pete Macgregor
 Clerk Bonnie Blackledge
 Treasurer Jim LaPeer
 Trustees Deb Diepenhorst
 Dick Davies
 Steve Grimm
 Rob McBrien
 Township Offices .. 874-6966
(Hours 8:00 am – 5:00 pm, Mon – Fri)
 Fax 874-8940
 Fire Department ... 874-9725
 Emergency 911

PRSRT STD
 U.S. POSTAGE

PAID

ROCKFORD, MI 49341
 PERMIT NO.1

Township Board Meetings • 2nd & 4th Monday, Monthly • 7:00 p.m., Township Hall

6878 Belding Road, NE • Rockford, MI 49341

The Cannon Communicator, Winter 2008