

Communicator

Published by the Cannon Township Board, Kent County, Michigan

Winter 2004

From the Supervisor's Desk . . .

In the next month or so the North Kent Sewer Authority (NKSA) and the five communities that comprise the Authority will be making a colossal decision. Should we sign the contract that Grand Rapids has proposed or should we build our own clean water treatment plant for NKSA sewage?

Comparing cost projections of the proposed contract with the City of Grand Rapids and the construction and operation of a NKSA Plant is not black and white. Projections, formulae, estimates, expenditures and data are debatable and complex. Recent meetings between representatives of the NKSA and the City of Grand Rapids have shed new light on what are alleged to be the most accurate and current cost projections for the Grand Rapids Contract option. The NKSA Clean Water Plant option, too, has reached a stage where more true cost projections are available.

The Township Board has been looking at the four most important issues: 1) plant design, 2) schedule of construction, 3) required permits, and 4) cost aspect.

The plant design would be cutting edge technology in the wastewater industry. The plant would use membrane technology that would produce effluent discharging into the Grand River comparable to clean drinking water. The Grand Rapids treatment plant is permitted to treat its sewage at an 85% level, while the new membrane system treats sewage at 99%+ level before discharging.

It is expected that a new plant will take one year to design and two years to build. The current contract with Grand Rapids expires November 2008. It was a 40-year contract, first signed in November 1968. So far, timing has not been a huge issue, but it will become a critical issue if the NKSA does not come to an agreement within the next two months.

The Authority has been proactive with the permitting process. We knew that if we could not obtain permits from the DNR and other authorities that building a plant would be a moot point. Fortunately, most of our permits are in order. The National Pollutant Discharge Elimination System (NPDES) permit allows us to discharge water. The endangered plant species permit has been approved and the "beak grass" has been relocated. There is a verbal approval from the DEQ for the wetland component of the Floodplain/Floodway permit. Other requirements related to this permit are in the process of being completed; and the final Act 98 construction permit would be issued when the construction plans are completed.

continued next page

The cost issue is much more complicated because there are so many mandatory stipulations to the City of Grand Rapids "Contract". There is a required "head tax" based on a percentage of population in the Township (not just sewer users) and the monies are used for a variety of projects unrelated to sewer. The "sewer integrated connection fees" are based on lot sizes determined by the City of Grand Rapids – not by the individual members of the NKSA. These rates apply to lands already on sewer and not just to future extensions. NKSA is penalized for having a more modern and tighter sewage system. We pay for everyone else's leaky systems, called inflow and infiltration or I & I. To put it simply, the Grand Rapids contract shifts the cost of sewage from the city to the suburbs.

Grand Rapids has shared its master plan for sewage upgrades and repairs with NKSA and it ranges from \$120 million to \$160 million dollars through 2010. No one knows what is projected or could happen after 2010. Are Grand Rapids' cost projections accurate, reasonable and reliable? NKSA is still debating this. We also have continued debates whether the cost projection of a new plant is accurate and reliable. Thus far, the plant projection is \$48 million.

No matter what avenue the Township Board and the NKSA decide to take, the cost of treating sewage is going up. We are at a crossroad and it is important that we understand the facts before making a final decision. The cost of public sewer service and the environmental protection it provides is going to get much more expensive. Is it more cost effective to send our sewage to Grand Rapids or to build a plant? Depending on which set of data you look at, the cost to build is slightly higher for Cannon Township sewer customers. There is a clause in the Grand Rapids contract that requires a 35-year notice to opt out. It is a 40-year contract, automatically renewing every five years. Signing Grand Rapids contract would eliminate any future for the construction of a new plant. Building a new plant would eliminate all the inequities in the Grand Rapids contract.

Pete MacGregor, Township Supervisor

New Township Board Members

As we begin our new year, I would like to welcome our two new Board members, Diane Jones and Jim LaPeer. Diane lives on Lake Bella Vista and has been active in Lake Bella Vista projects. Jim lives off of Cannonsburg Road and has served many years on the Planning Commission. I would also like to thank the two former members, Steve Grimm and Bob Tidey, for their service and dedication to our Township over the past eight years.

Dick Davies, Trustee



Grease - a problem for sewers and septic

Cannon Township recently adopted a grease trap ordinance in order to prevent problems with the sewer system. The following information addresses the problem of grease in a disposal system. The new ordinance applies only to commercial establishments.

The *Water Environment Federation* has some information and helpful tips on preventing fats, oils and greases from damaging your home and the public sewer system.

Sewer overflows and backups can cause health hazards, damage home interiors, and threaten the environment. An increasingly common cause of overflows is sewer pipes blocked by grease. Grease gets into the sewer from household drains as well as from poorly maintained grease traps in restaurants and other businesses.

Where does the grease come from?

Most of us know grease as the byproduct of cooking. Grease is found in such things as:

- Meat Fats
- Lard
- Cooking Oil
- Shortening
- Butter and margarine
- Food Scraps
- Baking goods
- Sauces
- Dairy products

Too often, grease is washed into the plumbing system, usually through the kitchen sink. Grease sticks to the insides of sewer pipes (both on your property and in the streets). Over time, the grease can build up and block the entire pipe.

Home garbage disposals do not keep grease out of the plumbing system. These units only shred solid material into smaller pieces and do not prevent grease from going down the drain. Commercial additives, including detergents, that claim to dissolve grease may pass grease down the line and cause problems in other areas.

continued on next page



The results can be:

- Raw sewage overflowing in your home or your neighbor's home;
- An expensive and unpleasant cleanup that often must be paid for by you, the homeowner;
- Raw sewage overflowing into parks, yard and streets;
- Potential contact with disease-causing organisms; and
- An increase in operation and maintenance costs for local sewer departments, which causes higher sewer bills for customers.

What we can do to help

The easiest way to solve the grease problem and help prevent overflows of raw sewage is to keep this material out of the sewer system in the first place

There are several ways to do this.

1. Never pour grease down sink drains or into toilets.
2. Scrape grease and food scraps from trays, plates, pots, pans, utensils, and grills and cooking surfaces into a can or the trash for disposal (or recycling where available).
3. Do not put grease down garbage disposals. Put baskets/strainers in sink drains to catch food scraps and other solids, and empty the drain baskets/strainers into the trash for disposal.
4. Speak with your friends and neighbors about the problem of grease in the sewer system and how to keep it out. Call your local sewer system authority if you have any questions.

What Restaurant and Building Owners Need to Know About Grease Traps or Interceptors

Restaurants, large buildings (such as apartment complexes), and other commercial establishments may have grease traps or interceptors that keep grease out of the sewer system. For a grease trap or interceptor to work correctly, it must be properly

- Designed (sized and manufactured to handle the amount that is expected),
- Installed (level, vented, etc.), and
- Maintained (cleaned and serviced on frequent basis).

Solids should never be put into grease traps or interceptors. Routine, often daily, maintenance of grease traps and interceptors is needed to ensure that they properly reduce or prevent blockages.

Be cautious of chemicals and additives (including soaps and detergents) that claim to dissolve grease. Some of these additives simply pass grease down pipes where it can clog the sewer lines in another area.





Tips for clean water during the winter months

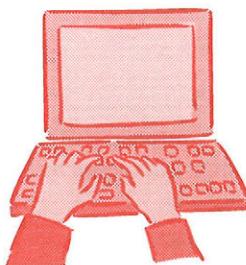
During the winter months, people tend to do less outdoors, but there are still a few things that can be done to maintain or improve the quality of our water. Although the ground is frozen and so is most of the surface water, there is still a lot of water moving and it is still very susceptible to pollution. Here are a few things that you can do or look for this winter:

- Is your car leaking oil or any other fluid? If so, have it checked out and fixed. Good car maintenance is good, not only for the environment, but also for your bank account.
- Don't feed the Canadian Geese. They will stay here if you feed them, and this throws off their migrating patterns.
- Fertilize only in the spring or fall, not during the winter months. The plants do not need the nutrients during the winter, so to fertilize now would be equivalent to throwing money away.
- Use as little salt as possible, because it will find its way into the nearest water body. The most effective way to keep walkways safe is to shovel as close to the surface as possible and then apply the salt, or de-icing agent. Simply throwing salt on snow does very little good and is a waste of salt and money.
- Keep trash from finding its way out of the trash bags or bins. In the winter, trash tends to not get picked up because of the cold and snow, but it can still find its way into water ways and is an eyesore in the spring or when snow melts.

Ryan Teelander

Watershed Web Pages

The Watershed web pages are finally up and running. You can get to these pages from our main web site, www.cannontwp.org, by clicking on the top button that says "watershed information." This brings you to the site's home page from where you can navigate to areas such as the Grand River, Rogue River, and Bear Creek Watersheds, the area lakes, and wetlands. There are also pages where you can receive information and provide feedback.



These pages are new and we will be making changes to them as we discover ways to make them more user-friendly. We value your input, so please call or email us to let us know whether they have proven useful to you and what we can do to make them better.

Bonnie Shupe and Ryan Teelander



What is Storm Water Runoff?

One of the most significant, yet unrecognized groups of water contaminants is storm water pollutants. When it rains, storm water runs over yards, streets, roads, highways, parking lots, parks, and playgrounds, carrying with it everything in its path, including debris and pollutants. Eventually, the water will travel to a stream, either over land or via a storm drain. Storm drains are frequently located alongside streets and parking lots. Unlike sanitary sewers that divert water to a treatment plant directly from your home, storm drains lead directly to surrounding lakes and rivers without any type of treatment. All the debris and pollutants that were picked up by storm water runoff, end up in your lakes and streams!



Where Does the Pollution Come From?

Most contaminants are made up of common items used by residents, businesses and visitors, such as fertilizers, car oils and greases, yard clippings, soil, and pet wastes. Below are some tips you can follow to help keep pollution from entering lakes and streams via storm water runoff.

Tips to Keep Your Rivers, Lakes and Streams Clean

- Never dump anything down a storm drain!
- Use an oil pan when changing oil to keep fluids off the pavement. Check local body shops and quick lubes to find a place to appropriately dispose of used oil.
- Dispose of pet wastes in a trash can.
- Leave grass clippings on your lawn as an alternate nutrient to fertilizer. If a fertilizer is necessary, choose a slow-release product and test your soil to find out how much fertilizer your lawn actually needs.
- Wash your car on your lawn so excess water, chemicals, and dirt is filtered through the lawn.
- Keep household hazardous wastes, such as harsh cleaners, paint, car fluids, and batteries from entering lakes and streams by disposing at a household hazardous waste center. Try using environmentally-safe alternatives or recipes with non-hazardous ingredients.
- Use a broom rather than a hose to clean up grass clippings and dirt.
- Keep a trash bag in your car... and use it!



Look for more articles about storm water pollution prevention in future issues. For more information about MDOT's Storm Water Management Plan, check out www.mdot.state.mi.us/stormwater.



Wetland Ordinance Update – as of this writing, the draft wetland ordinance continues to be reviewed and discussed. There are several important issues related to the ordinance that need to be considered. One is whether to have joint jurisdiction with the Michigan Department of Environmental Quality on all wetlands, or to only regulate those that are less than 5 acres. Another issue is who should have the authority to grant or deny the permit and what body would decide an appeal.

The Board intends to hold a special meeting on December 15th, after this newsletter, has been sent to the printer, in order to go over the ordinance once more with the Township attorney and make a decision on these issues. Updated information can be found on the website under "What's new?" or by calling the Township office at 874-6966.

After the Storm

The video "After the Storm" which was shown several times on television is available for free rental from the Township office. This video was co-produced by the EPA and The Weather Channel and is 22 minutes long. It focuses on three case studies throughout the United States and discusses the interconnections between water supply, water quality and the economic vitality and quality of life in our communities. We also have several other education videos available for rental. Please contact Bonnie for more information.

National Wildlife Federation

National Wildlife Federation packets are available at no charge at the Township office. This is a wonderful program where you are able to certify your yard as a recognized backyard habitat. The Township recently applied for certification. Be the first one on your block to receive your sign. This could be an enjoyable family project. Contact Bonnie or Ryan for more information or check out the website: <http://www.nwf.org/backyardwildlifehabitat/>



Editor

Bonnie Shupe, Township Clerk

616 874-6966

Design and Layout of Newsletter:

Margie Smallfield • Smallfield Graphics

616.874.5858

Printing

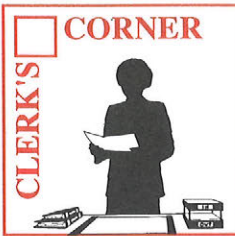
Dickens Printing, Inc

616.784.6699

United Growth of Kent County has an interesting electronic newsletter that can be viewed and printed from this website: <http://www.msue.msu.edu/unitedgrowth/newsletter.htm>

It is filled with a lot of useful information about positive land use, with a focus in this fall edition on Michigan harvest.

There are also copies of the summer edition available at the Township in our rack in the lobby.



Elections – Changes Ahead

If you voted in person in November, you probably noticed that there were long lines and parking places were difficult to find. Hopefully, that will be the last time you will encounter so much difficulty.

At the present time there are four precincts in Cannon Township with two at each polling place – Bella Vista Church and the Township Center. I am working on adding three additional polling places and expanding to six precincts. The result will be two precincts voting at Bella Vista Church, one at the Township Center, and three elsewhere. The good news is that this will make the lines shorter and parking easier. The bad news is that many of you will be switching to a different precinct and polling place. Change is often hard, especially when you've voted in the same polling place for many years. However, in order to maintain efficiency, change is often necessary.

Also, beginning in January, the Township will administer all elections. That is a big change for the clerks statewide. We are working to cooperate with the local school districts to run these elections as efficiently as possible. School elections used to be held in June of each year, but they will now be held in May on the first Tuesday following the first Monday. The good news there is that you will only have one polling place to remember where you will vote for all elections.

As soon as I firm up the new polling places and change precinct boundary lines, you will be issued a new voter identification card. This card will show that your school polling place is the same as your regular polling place. When you get this card, please destroy your old one. Take a few minutes to familiarize yourself with your new precinct number and polling place. I hope to send these cards out before March.

The spring issue of the Communicator will include a map of the new precinct lines and polling places. It will also be posted on our website and at the Township Center. The first time you will use this information will be at the May school election.

Results of the general election are posted on the website. Cannon Township had an 84.2% turnout. Of our 9384 registered voters, 1792 voted by absentee ballot. Precinct 4 had the highest turnout, with 85.5%. In spite of the long lines, everything went well at the polls.

Just a reminder – if you are 60 years of age or older or unable to attend the polls without the assistance of another, you qualify to be put on our permanent absent voter list. The voters on our permanent list are sent applications for AV ballots for each election, and it is your choice whether you take advantage of this process. If you choose to vote at the polls, you simply do not return the application form. Please contact Nancy or me (874-6966) if you wish to be added to the list. This will now apply to all elections, including school elections.

Bonnie Shupe, Township Clerk

Dates to Remember

2004

Dec 23, 24 CHRISTMAS HOLIDAY - OFFICE CLOSED

Dec 31 NEW YEAR'S HOLIDAY - OFFICE CLOSED

2005

Jan 3 Quarterly Sewer Bills Mailed

Jan 8 & 15 Christmas Tree Recycling 9:00 am - 3:00 pm

Jan 10 Township Board Meeting - 7:00 pm

Jan 11 Planning Commission Meeting - 6:00 pm

Jan 13 Bear Creek Watershed Committee - 4:00 pm

Jan 18 Zoning Board of Appeals Meeting - 7:00 pm

Jan 24 Township Board Meeting - 7:00 pm

Jan 31 Quarterly Sewer Bills Due

Feb 8 Planning Commission Meeting - 6:00 pm

Feb 10 Bear Creek Watershed Committee - 4:00 pm

Feb 14 Township Board Meeting - 7:00 pm

2004 TAXES DUE - Penalty begins Feb 15, 2005

Feb 15 Zoning Board of Appeals Meeting - 7:00 pm

**Feb 28 Deadline for Collection of 2004 Taxes at Township Office
Township Board Meeting - 7:00 pm**

Mar 1 Last Day to obtain Dog Licenses at Township Office

Mar 8 Planning Commission Meeting - 6:00 pm

Mar 10 Bear Creek Watershed Committee - 4:00 pm

**Mar 14 Board of Review - 9:00 am - 12:00 pm, 1:00 pm - 4:00 pm
Township Board Meeting - 7:00 pm**

Mar 15 Zoning Board of Appeals Meeting - 7:00 pm

Mar 17 Board of Review - 2:00 pm - 5:00 pm, 6:00 pm - 9:00 pm

Mar 28 Township Board Meeting - 7:00 pm

Any changes or additions to the calendar can be found on our web site - www.cannontwp.org under "Township Events."



THE Fire Chief's Report

As we begin winter in Michigan, the National Fire Prevention Association has some great facts for fire prevention and general safety to keep in mind while traveling and preparing for holiday festivities or just hanging around your home.

Safety Basics for Winter time:

Blinding wind-driven snow, extreme cold, icy roads, and downed trees and power lines can all accompany winter storms. Communication lines can be cut off, and access to emergency and medical services may be severely limited once extreme weather hits a region. It's important to know what to do before, during, and after a winter storm:

Prepare a family emergency supplies kit that contain such items as flashlights, a battery operated radio, candles, etc. Families with children should have each child create their own personal pack that might contain a favorite security item (blanket, stuffed animal, etc.) or activities to keep busy and anything that is age appropriate to help keep the child warm and secure.

Establish an out-of-area contact (such as a relative or family friend) who can coordinate family members' locations and information should you become separated. Make sure children learn the phone numbers and addresses, and know the emergency plans.

Learn how to disconnect gas, water, and electric power in case you must evacuate your home.

A **winter storm watch** means conditions are right for a severe storm to develop within 36 to 48 hours. Avoid going outside or traveling -- the safest place to be during a winter storm is indoors. During a winter storm watch:

- Listen to the radio or TV for the latest weather information.
- Review your family's disaster plan.
- Watch for changing weather conditions.
- Move any pets or other animals to a sheltered area (make sure they have water).

A **winter storm warning** means a life-threatening severe winter storm has begun or will begin within 24 hours. A blizzard warning is issued when conditions are likely to produce deep drifts, life-threatening wind chills, and blinding snowfall. During a winter storm or blizzard warning:

- Listen for news and weather updates.
- Dress in many layers.
- Implement your emergency plan regarding food, water and supplies if you are unable to go out for a prolonged period.
- To conserve fuel, lower the thermostat to 65° F during the day and 55° F at night.
- If power goes out, you may be forced to find other means of keeping warm during the storm. Use only safe emergency heat sources, such as a fireplace with a sturdy metal screen and a supply of wood; a well-vented wood, coal, or camp stove; a portable space heater. Read NFPA's heating fact sheet for more information on safe home heating.

continued next page

Dress warmly in many layers, and always wear a hat. Protect your lungs by covering your mouth. Stretch before shoveling heavy snow and remember to take breaks to avoid overexertion. Continue to listen to the news and weather updates.

The NFPA website has more educational tips on emergency planning and fire prevention along with a great area for kids. If you have a chance, visit their website at www.nfpa.org.

Another interesting article from NFPA that was recently published in Fire Chief Magazine shows that, in general, people fear tornadoes over fires.

According to the article, a new survey that the National Fire Protection Association released during Fire Prevention Week in October showed Americans underestimate their risk of fire. Choosing from a list of disasters, 31% of those surveyed by the NFPA said they felt most at risk for tornado, while only 27% named fire as the highest risk.

Asked which kind of disaster they feel most prepared for, the highest percentage of respondents (31%) said they felt most prepared for fire. Their answers to other survey questions suggest they are prepared but not prepared enough, said the NFPA. Ninety-six percent have smoke alarms, a new high for the nation. **But only one-fourth have developed and rehearsed a plan for escaping their home in a fire!**

With the winter months upon us, take a minute and review the emergency plan for your home and car using the tips listed above; check to make sure your smoke and carbon monoxide detectors are working; replace batteries in your smoke and carbon monoxide detectors; and remember to have a wonderful and safe Holiday season.

*From all of us at the Cannon Township Fire Department,
Happy Holidays!*

Open Space Preservation

Cannon Township has recently joined with Grattan, Ada, and Vergennes townships to form a committee dealing with preservation of open spaces, especially in the area where the four townships meet. We hope to provide educational opportunities for residents of these communities to teach the value of protecting our natural features and preserving greenway corridors for wildlife migration. Watch for more information in future newsletters.

From the Historical Society

The museum is open by appointment only throughout the winter months. To schedule an appointment, please call Margaret Janose at 874-6865.

Also, it's too late for this year, but it's a good time to think ahead for the next. If you have any antique Christmas ornaments you're willing to donate to the museum, they would like to put together a display for next year. It might be a good time to think about this as you're going through your Christmas decorations.

CHRISTMAS TREE RECYCLING

The dates for this year's Christmas tree recycling are Saturday, January 8 and January 15 from 9:00 AM to 3:00 PM. The Rockford High School National Honor Society members will be on hand to help remove the tree from your vehicle. They then lop the branches off the trunk to prepare it for chipping. Donations are welcome as the NHS uses this for a fundraising event.

Often in the past, residents have dropped trees off before the dates of the recycling. There will be a designated area near the paper trailer for drop offs during the week. Of course, we prefer that you wait until Saturday so the trees don't get full of snow or freeze to the ground. If you do drop off your tree during the week, you may place a donation for the NHS in the drop box or bring it into the office.

This service is done by volunteer students. There is no paid staff to take care of the trees that are left after January 15th. Please consider this and do not leave any trees after that date. Also, please do not bring wreaths or garland attached to a metal structure. We are not able to recycle these and they end up in our trash.



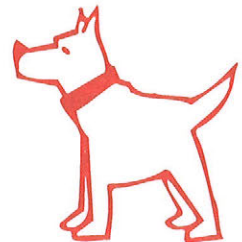
Township Trail Update


Everyone asks about the Township trail, but we still don't have any answers. The Board is committed to building the trail, but we continue to wait to hear from MDOT. It has been a year since we sent in the grant application, and we have been in touch, but there is still no word. Part of the problem has been the lack of reallocation of TEA-21 funds by the federal government. At this time, there just isn't enough money to fund these enhancement projects.

Our engineering is almost completed. Once that is done, we will formalize the easement agreements. Hopefully, by that time we will hear about grant funding and be able to make a decision regarding trail construction. I think we'd all like to be walking, biking, or skating on the trail sometime next summer! Let's hope we see it happen.

Dog Licenses

Dog licenses are sold by the Township from December 1, 2004 through March 1, 2005. Rabies vaccinations and dog licenses are required in Michigan for all dogs four months of age or older. You will need to bring the preprinted application form from the animal shelter, or an updated rabies vaccination and proof of spaying or neutering. Call the Animal Shelter at 336-3210 if you have any questions.





Happy Holidays
to all the residents
of Cannon Town-
ship from your
Township Boards,
Commissions and
Office Staff

From the Treasurer's Office

FREQUENTLY ASKED QUESTIONS AFTER TAX BILLS ARE ISSUED

WHAT IS THIS FOR? The Summer tax bill collects the tax levies for Rockford Public Schools or Lowell Public Schools (depending where in the Township your property is located), Grand Rapids Community College, Kent Intermediate School District and the State Education Tax. The Winter tax bill collects the tax levies for Rockford Public Schools or Lowell Public Schools or Forest Hills Public Schools (depending where in the Township your property is located), also Cannon Township, Kent District Library and Kent County. These tax bills do not cover specific months but rather collect different taxes due for the entire year. The two bills together make up the total annual property taxes due. Personal property taxes are determined by the location of the property in Cannon Township on December 31 each year.

HOW IS THE BILL FIGURED? The Township Assessor determines the value of the property on December 31 of each year. Then twice during the following year (July 1 and December 1) a tax bill is issued based on the taxable value assessed. The "Taxable Value" (found in the Tax Detail) is multiplied by the "Millage Rates" (found in the Tax Detail) to arrive at the "Total Amount Due".

WHAT IS THE PRINCIPAL RESIDENCE EXEMPTION AND HOW DO I KNOW IF IT IS IN PLACE ON MY PROPERTY?

You qualify for the Principal Residence Exemption if you own and reside in your home by May 1. This means you do not pay local school operating tax. Check your bill. If under the Tax Detail heading, the P.R.E. % is 100, the Principal Residence Exemption is in place.

WHEN IS IT DUE? The last day to pay the Winter 2004 tax bill without interest and penalty is February 14, 2005. It must be received in our office by that date. We do not accept postmarks as the pay date.

HOW CAN I PAY THIS BILL? Payments can be made at the Township offices from 8:00 am to 5:00 pm, Monday through Friday. The offices will be **closed December 23, 24 and 31**. There is a 24-hour drop box located to the left of the main entrance. If you are paying by mail and desire a receipt, enclose your entire bill with a self-addressed, stamped envelope and we will return the top section stamped "PAID".

WHY DO I RECEIVE A TAX BILL IF MY MORTGAGE COMPANY PAYS MY TAXES? You will **always** receive the original copy of the tax bill even if your mortgage company requests a duplicate billing. If they have requested a duplicate bill, their name will be on the top, left side of the bill. Your copy will say "Information Copy". This is sent so that you will: 1) know how much your taxes are, 2) know who requested your tax information, 3) be able to compare your tax bill with the end of year statement sent to you by your lender and 4) have information you may need

continued next page

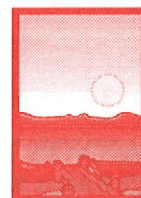
to file your income tax returns. If your bill does not indicate that your tax information was sent to your lender, simply forward a copy of the bill to them. Please keep your original for your records.

WHAT IF I RECEIVE A BILL THAT I DON'T THINK IS MINE? Name/ownership changes on real property are affected by the recording of the deed, which is done at the County level and can take several weeks to process. If you receive a bill for a property that you no longer own, please pass it on to the new owner, if possible, for timely payment. Otherwise return it to us so that we may redirect it. For the purpose of changing your mailing address only (not the mortgage company), please use the space provided on the bill.

Please read the insert sent with your Winter Tax bill. It explains how the Kent County Operating Millage will be shifted to the Summer Tax Bill for collection. This will be done over the next three years. You should plan to adjust your escrow account or savings plan to avoid or minimize a surprise increase in your payout for your Summer Tax Bill.

*Dan Barker, Treasurer
Milissa Soderstrom, Deputy Treasurer*

From the Zoning Administrator Christine James:



Reminder -- All docks shall be removed from Township lakes on or before December 15th. Sunfish Lake residents are exempted.

New developments – Hidden Canyon Open Space-Planned Unit Development located on the south side of Cannonsburg Road, south of BJ Street; Ryan Valley Open Space-Planned Unit Development located on the west side of Egypt Valley Avenue across from Robin Hill; Pine Valley Estates Site Condominium located on the west side of Sunfish Lake Avenue, south of Kreuter.



New private roads – Greeley Court located on the west side of Greeley at the bend in the road; Scenic Woods located on the west side of Myers Lake Avenue, and Martin Pointe located on the west side of Tiffany Avenue.

Clip and Save Email Addresses



Supervisor, Pete MacGregor: pmacgregor@cannontwp.org

Clerk, Bonnie Shupe: bonnies@cannontwp.org

Treasurer, Dan Barker: dbarker@cannontwp.org

Trustee Diane Jones: dianejones@chartermi.net

Trustee Jim LaPeer: JimLaPeer@ferris.edu

Trustee Dick Davies: rrd8565@hotmail.com

Deputy Clerk, Nancy Popma: nancyp@cannontwp.org

Deputy Treasurer, Milissa Soderstrom: milissas@cannontwp.org

Zoning Administrator, Christine James: christinej@cannontwp.org

Administrative Assistant Sue Clarin: suec@cannontwp.org

Watershed Assistant, Ryan Teelander: Rteelander@cannontwp.org

Fire Chief, Harry Morris: Chief@Cannontwp.org

State Representative, Tom Pearce: tompearce@house.state.mi.us

Phone: 616-874-5712

State Senator, Ken Sikkema: senksikkema@senate.state.mi.us

Phone: 1-800-774-1174

Congressman Vern Ehlers: www.house.gov/writerep

Cannon Township Web Site: www.cannontwp.org

Kent County Web Site: www.accesskent.com

State of Michigan Web Site: www.michigan.gov



CANNON TOWNSHIP

6878 Belding Road, NE

Rockford, MI 49341

TOWNSHIP BOARD

Supervisor Pete Macgregor

Clerk Bonnie Shupe

Treasurer Dan Barker

Trustees Diane Jones

Dick Davies

Chuck Bloom

Jim Lapeer

Township Offices 874-6966

(Hours 8 am.-5pm., Mon.-Fri.)

Fax 874-8940

Fire Department 874-9725

Emergency 911

Township Board Meetings

2nd & 4th Monday, Monthly

7:00 p.m., Township Hall

PRSRT STD
U.S. POSTAGE
PAID
ROCKFORD, MI 49341
PERMIT NO. 1